



# Merced Police Department 2024/2025 Update

# Updates

## Use of Force Internal Affairs and My90










- In 2025 MPD saw an overall reduction of Use of Force by 10%.
  - What changed- Implemented the Autism Training, ABLE Training and transitioned all shotgun platforms to less lethal munitions
- In 2025 Internal Affairs complaints reduced by 10%. Since 2022 we have seen and overall reduction of 50% in complaints.
  - What changed- New overall department direction, Strong focus on community relationships and Staff development and a focus on accountability.
- In 2025 we implemented MY90 through AXON
  - Result - 78% of our survey returns say they had a positive or extremely positive interaction with our officers. 10% say they were sent in error. 12% bad or slightly negative (6/6). The main complaint of those is not MPD jurisdiction.

# Updates COMPSTAT

- Compstat is a daily assessment of crime in our community that helps us achieve our mission statement of driving down the crime rate and improving the quality of life for citizens in our community. Gone are the days of waiting a year, six months, or even a month for crime data to see if we are being effective. We have daily, real time data to analyze and help identify crime spikes, emerging trends, and concerning areas. CompStat goes hand in hand with our mission statement and our three overarching department goals of Reducing Crime and the Fear of Crime, Increasing Community Engagement and Promoting Organizational Excellence.








# Updates

## COMPSTAT 2024/2025 Crime updates

- Calls for service up 10.4 % 
- Cases up 7% 
- Adult Arrest up 51% 
- Juvenile Arrest down 25% 
- Traffic Accidents down 25% 
- Citations up 106% 
- Vehicle Burglary down 30% 
- Residential Burglary down 27% 
- Commercial Burglary down 40% 
- Almost 2000 citations issued by the red-light camera \*second location in the works\*

# Updates

## COMPSTAT 2024/2025 Crime updates

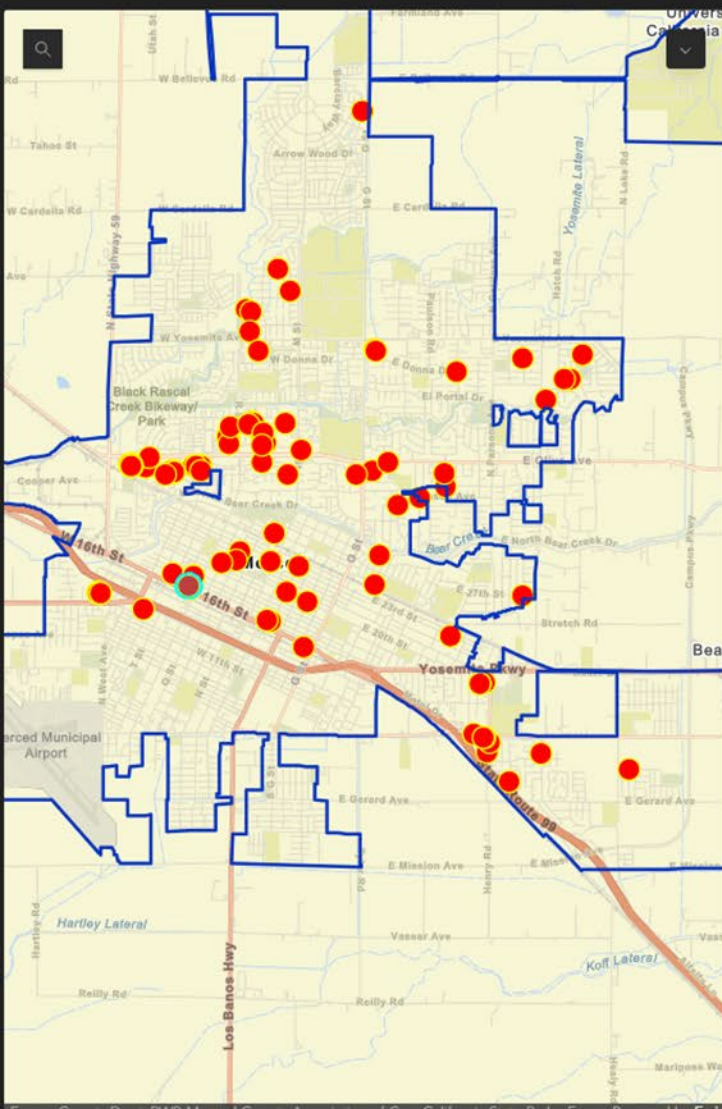
- Robbery down 25% 
- Auto Theft down 38% 
- Sexual Assault down 15% 
- Simple Assault up 1% 
- Felony Assault down 6% 
- Overall Assaults down .25% 
- Shootings down 32% 
- Homicide up one from 7 to 8

These numbers are all related to our renewed focus on staffing, area command and efficiency in deployments.

# Real Time Information Center



- Staffed with 2 Crime Analysts
- Complete retail theft bulletins
- Monitor surveillance cameras
- Complete Auto theft bulletins
- Follow up on Online reports
- City statistic reporting



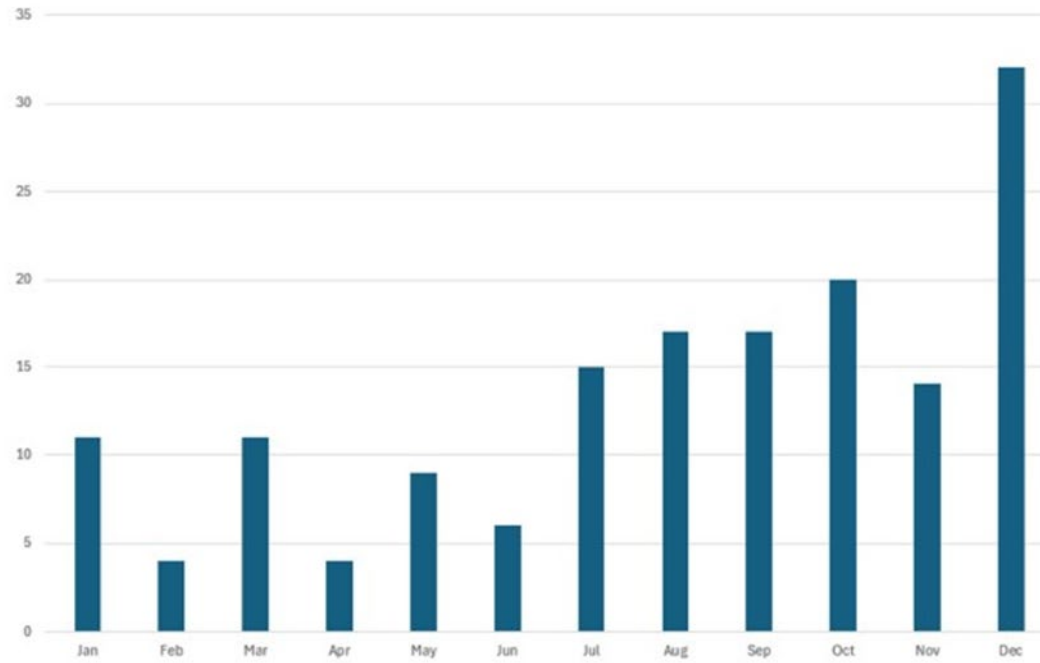
Scroll and Click on Images





## December 2025

Arrests Per Month

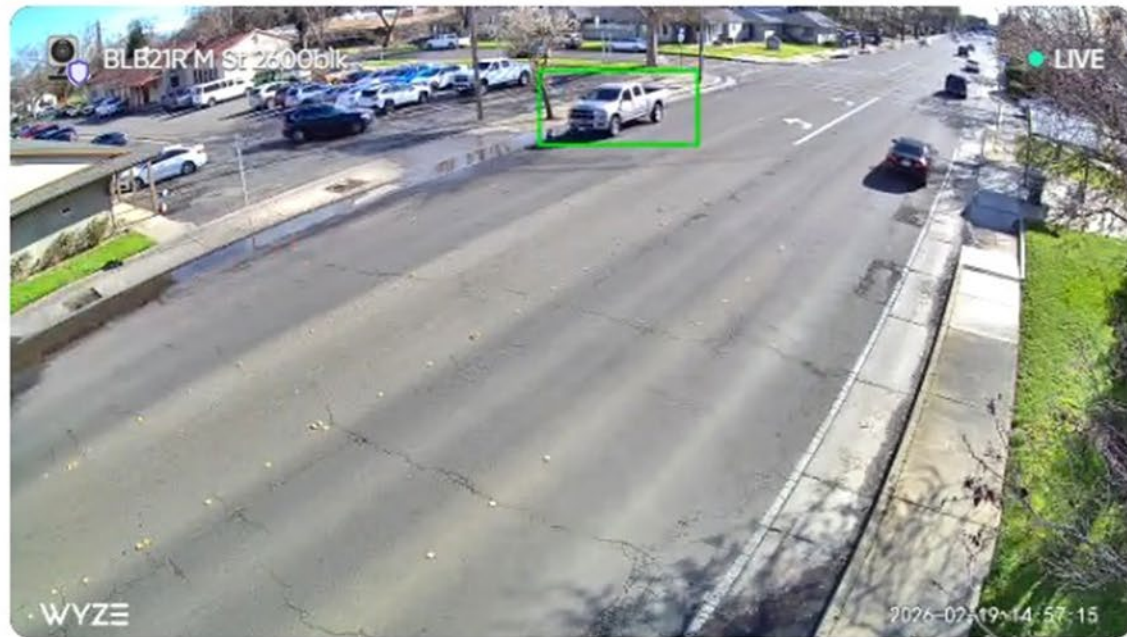


# BLUE LIGHT CAMERA LOCATIONS

- Olive Ave and G St. - 1 camera
- 3200 Block R Street - 1 camera
- Burbank Park - 1 camera
- Buena Vista Drive and San Francisco Street - 1 camera
- 3100 and 3200 Block Meadows Avenue - 2 cameras
- 2500 Block Glen Avenue - 1 camera
- 700 Block Loughborough - 1 camera
- 900 Block Loughborough - 1 camera
- 1200 Block Loughborough - 1 camera
- Horizons Avenue - 1 camera
- Pacific Drive (East of Horizons Ave) - 1 camera
- Stinson Avenue - 1 camera
- Applegate Park – (Skate Park) – 1 camera
- Applegate Park (M Street Side) – 1 camera
- Applegate Park (Zoo) - 1 camera
- Rahilly Park -1 camera
- 2200 Block East Yosemite Avenue - 1 camera
- 1700 Block I Street – 1 camera









# Camera Integration

## Camera Integration

Integrating your camera system takes community security one step further, helping you get more out of your security camera investment.

Camera sharing allows the Merced Police Department access to your camera feed in case of an emergency near your location. All your cameras or some of them. You set your preferences. Sharing your feed can improve response time and help keep you safer by providing advanced details of the situation.

To share your cameras, all you need is a small Axon FususCORE device that plugs into your camera system. Once it's set up, it enables camera sharing based on your settings without impacting your network.





## CORE LITE

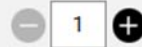


### Core Lite Bundle

\$350.00

Up to 4 Cameras, 512GB storage, software/hardware warranty.

Initial price includes the first year of subscription. Subscription is \$150 yearly. Subscription will automatically renew unless terminated by written agreement.



ADD TO CART

### Core Lite Extended Bundle

\$450.00

Up to 4 Cameras, 1TB storage, software/hardware warranty.

Initial price includes the first year of subscription. Subscription is \$150 yearly. Subscription will automatically renew unless terminated by written agreement.



ADD TO CART

## CORE PRO



### Core Pro Bundle

\$1,500.00

Up to 50 Cameras, 4TB storage, software/hardware warranty.

Initial price includes the first year of subscription. Subscription is \$900 yearly. Subscription will automatically renew unless terminated by written agreement.



ADD TO CART

### Core Pro Extended Bundle

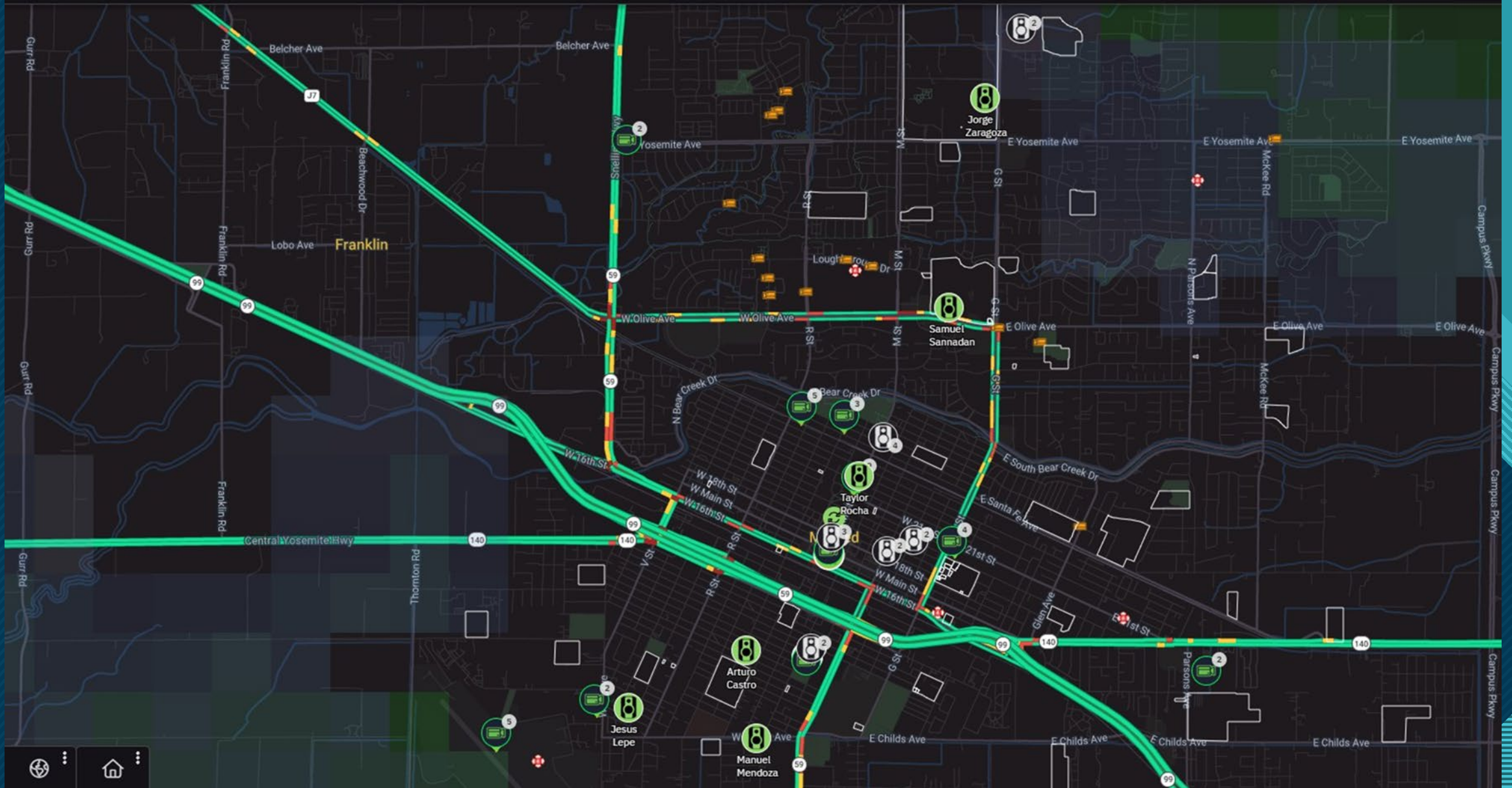
\$1,900.00

Up to 50 cameras, 22TB storage, software/hardware warranty.

Initial price includes the first year of subscription. Subscription is \$900 yearly. Subscription will automatically renew unless terminated by written agreement.



ADD TO CART



# Updates

## NBIN What is it?

- When a firearm is used, it leaves a unique mark on the bullet casing – essentially a "fingerprint." ATF's National Integrated Ballistic Information Network (NIBIN) uses the "fingerprints" to connect the casings found at a crime scene to the firearms used in the crime, which can lead to the identification of suspects.



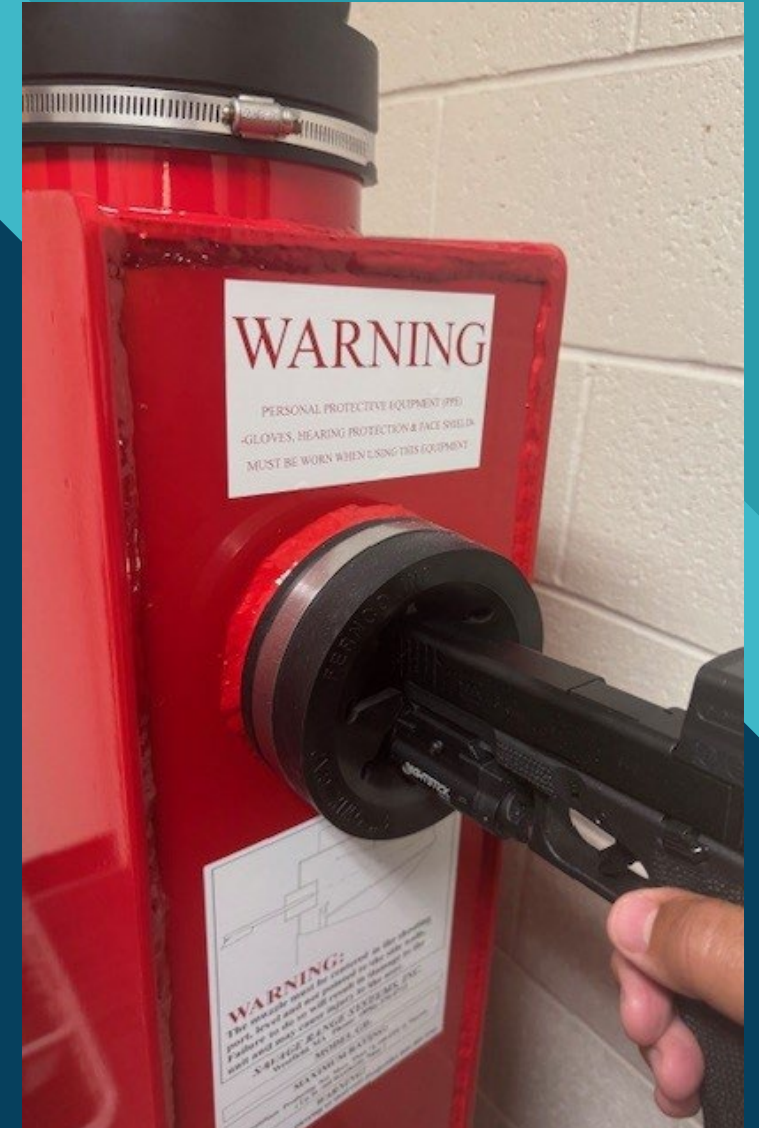
# How it works

- Firearms are recovered and test fired into the ballistic trap !

Casings are recovered from:

- \*crime scenes
- \*test fired guns

Then they are scanned through brass trax.

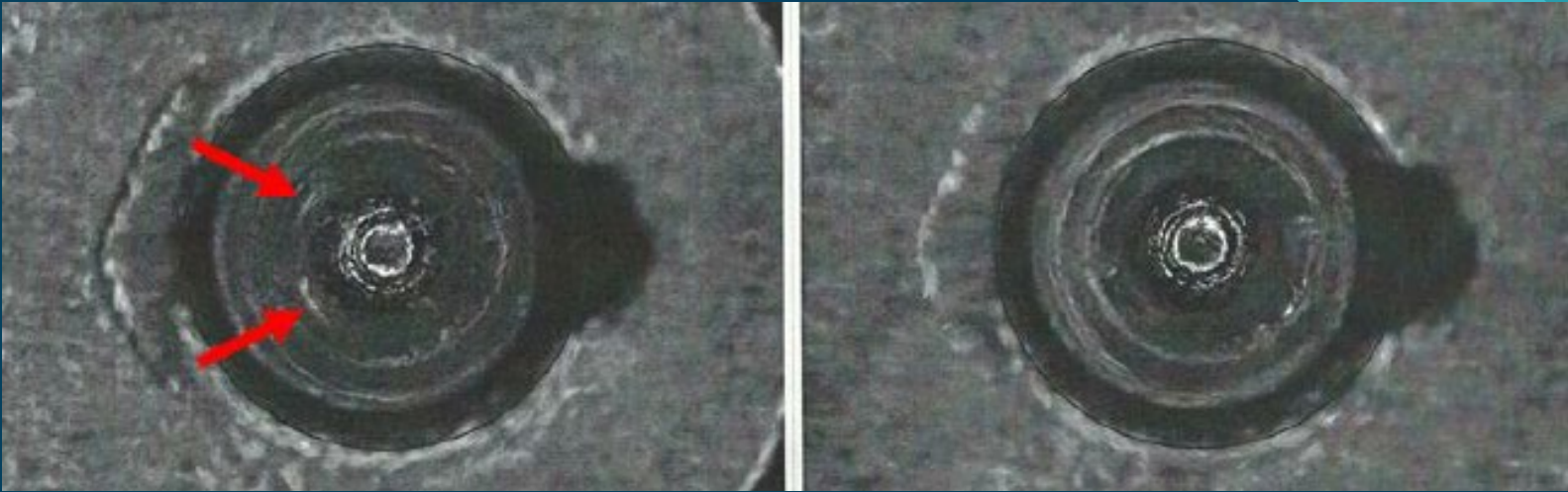


# BRASS TRAX

- The Brass Trax machine scans the casings and analyzes them through a national database maintained by the ATF known as NIBIN.



# NIBIN Results and Links



|                       |     |       |    |
|-----------------------|-----|-------|----|
| • Crime scene casings | 80  | Leads | 35 |
| • Test fire casings   | 161 | Leads | 21 |
| • Total               | 241 |       | 56 |

- 23% tests resulted in Leads

4-Assaults with firearms

9-Attempt homicide investigations

6-homicide investigations

24-outside agency links

## Crime Links: 21 Arrests

6-Drive by shootings at homes or vehicles

6-negligent discharge firearms

1-suicide

# Why NIBIN ?

- Reduces the amount of time to link together shootings or firearms to shootings
- Sending casings or firearms to DOJ can take months. NIBIN can have results in hours to days
- By quickly linking shootings we can gain quicker understanding of crime patterns and gain investigative leads quicker.
- NIBIN can link shootings together through multiple jurisdictions
- With a NIBIN link from a shooting to a firearm, this may be a deciding factor on whether the D.A office decides to file charges. So quicker identification of this evidence allows police to arrest a shooter and ensure they are charged quicker.



# Our Department

- In 2025 our department achieved each of its designated goals including the most challenging goal of holding a vacancy rate of less than 5%

We are proud to say that we have hired all but two of our approved positions. (Records Clerk)

Our staffing levels are better than they have been in years and just this month two lateral officers have called and are in the process of being hired. Detectives staffed at 10, patrol shifts full, traffic unit growing, DART team at 3 with a Sergeant, Crime Analyst positions filled.

We are no longer a training department we are a destination agency.

QUESTIONS?