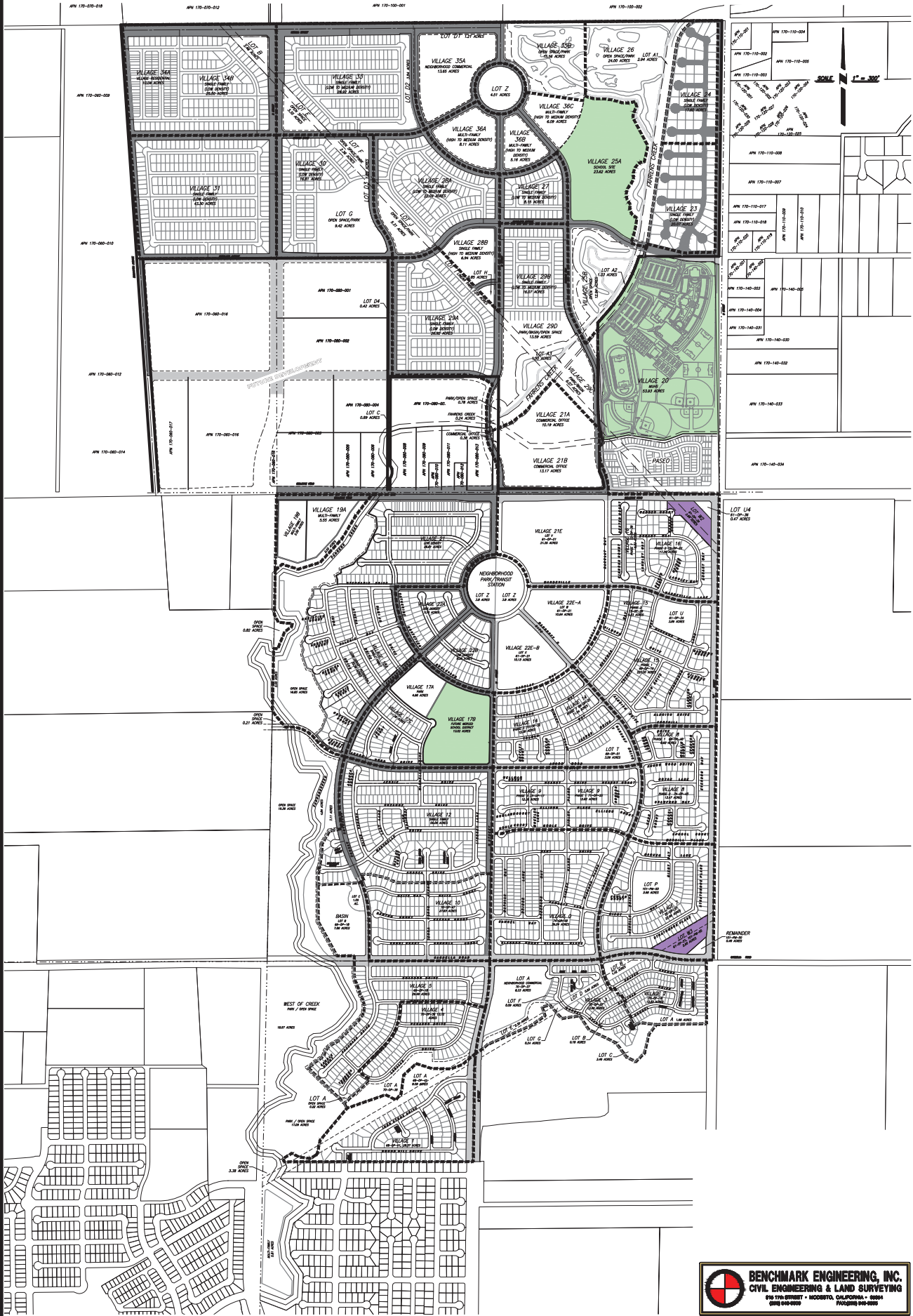


PROPOSED BELLEVUE RANCH MASTER DEVELOPMENT PLAN

PROPOSED GENERAL PLAN AMENDMENT (SCHOOLS AND PUBLIC UTILITIES)




BENCHMARK ENGINEERING, INC.
 CIVIL ENGINEERING & LAND SURVEYING
 675 17th STREET • SACRAMENTO, CALIFORNIA • 95811
 (916) 442-8888

DATE: 8/14/2023 8:58 AM REV: 10/11/2023 (PLAN, SUPP & VILL 1-17, 18, 19, 20 & 21) (PROJ: 23-09-13) PROPOSED PUBLIC UTILITIES MAPS