



City of Merced Fire Department

ADVANCED LIFE SUPPORT PROGRAM

Update on Current Services

- ▶ Merced County is an Exclusive Operating Area for ambulance service.
- ▶ Service provided by Riggs Ambulance since 1948.
- ▶ Current 911 ambulance contract set to expire Dec 2019.
- ▶ 911 ambulance RFP process currently in progress.
- ▶ MCEMSA hired PWW to perform EMS system evaluation 2016.
- ▶ EMS system failure experienced June 2017-May 2018.
- ▶ Tiered Response implemented by ambulance company in June 2018.

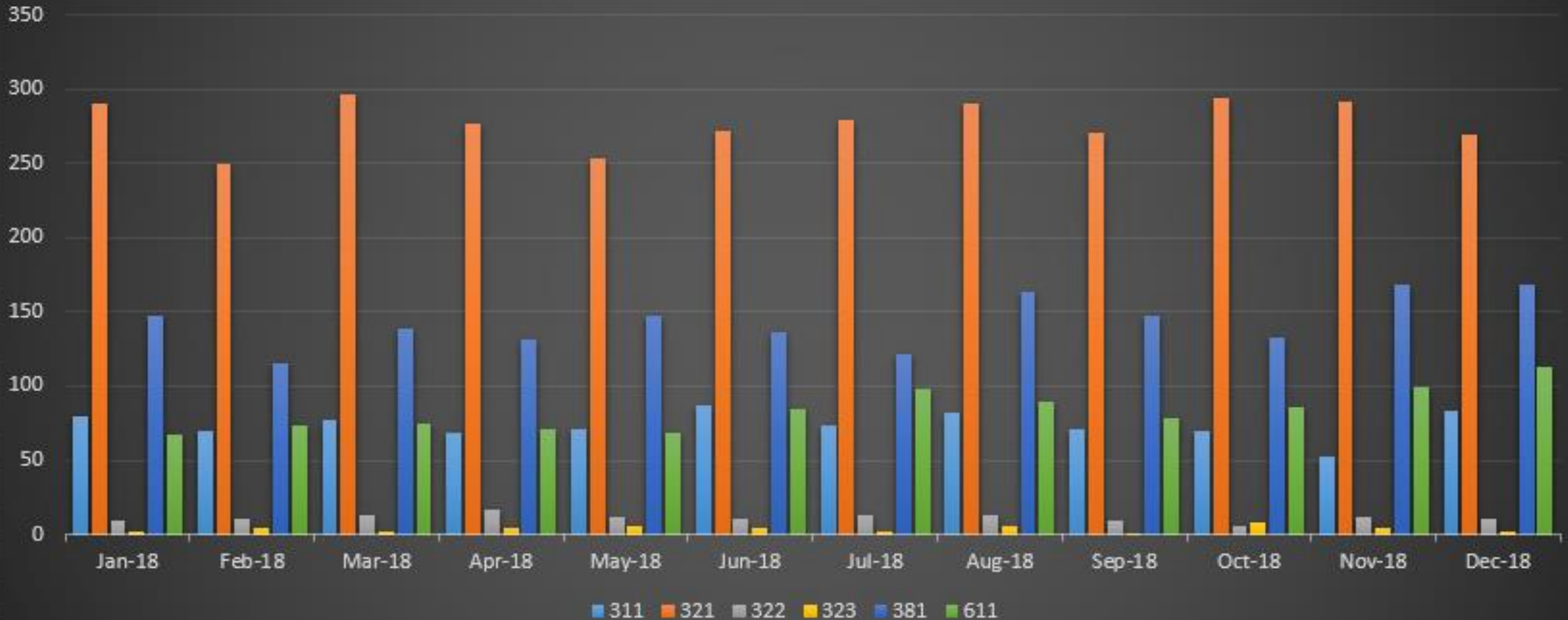
Current BLS Performance

Inc Code	311	321	322	323	381	611	Total	Daily Avg.
Jan-18	80	290	9	2	148	67	596	19
Feb-18	70	250	11	4	115	74	524	19
Mar-18	77	297	13	2	139	75	603	19
Apr-18	69	277	17	4	131	71	569	19
May-18	71	253	12	6	148	68	558	18
Jun-18	87	272	11	4	136	85	595	20
Jul-18	74	279	13	2	122	98	588	19
Aug-18	82	291	13	6	164	89	645	21
Sep-18	71	271	9	1	147	78	577	19
Oct-18	70	294	6	8	133	86	597	19
Nov-18	53	292	12	4	168	99	628	21
Dec-18	83	269	10	2	168	113	645	21
Daily Avg.	2.4	9.1	0.4	0.1	4.7	2.7	19.5	
Total	887	3335	136	45	1719	1003	7125	
				4403	6122			
	Patient Care Percentage			72%				
	MFD First On Scene			54%				

Current BLS Performance



MFD Monthly EMS Responses



Limited ALS - Advanced EMT

- ▶ An Advanced EMT is a currently certified EMT who receives additional training to provide/administer certain ALS interventions including:
 - ▶ Non-invasive advanced airway maintenance.
 - ▶ Initiate IV therapy.
 - ▶ Administer Dextrose and Naloxone via IV
 - ▶ Administer aspirin and Nitroglycerine to chest pain patients.
 - ▶ Administer nebulized bronchodilators to asthma patients.
 - ▶ Administer activated charcoal to overdose patients.
 - ▶ Administer epinephrine to allergic reaction patients.

What is ALS

- ▶ “Advanced Life Support” or ALS means any definitive prehospital emergency medical care including:
 - ▶ ECG/12 lead interpretation
 - ▶ Medication administration (25 medications) and treat conditions
- ▶ Reinforced disaster response capability.
- ▶ Increased system surge capacity.
- ▶ Expedited delivery of care on multi-patient incidents.
- ▶ Ability to address repeat system utilizers through prevention interactions.
- ▶ Ability to affect Ambulance Patient Offload Times through assessment and triage of patients prior to ambulance arrival.
- ▶ Provide immediate assessment and intervention for responders on scene of an emergency.

ALS Program Implementation

- ▶ Tier 1: Limited ALS Response Program

Allows currently licensed Paramedics to provide Advanced Life Support when on duty. Requires:

- ▶ Program Approval from LEMSA
- ▶ Contract with Medical Director (partnership with hospital/ambulance provider)
- ▶ Equipment/Supply Acquisition
- ▶ ePCR Program Acquisition
- ▶ CE/Training

Tier 1 status is achievable within current approved budget.

ALS Program Implementation Cont.

- ▶ Tier 2: **Enhanced ALS Alternative Response** Program

Consists of 1-2 Full-time ALS apparatus

Requires:

- ▶ Additional Licensed Personnel (4-8 Paramedics)
- ▶ Equipment/Supply Acquisition
- ▶ Overhead Need- Implementation of a 24/7 ALS program consisting of 1-2 ALS Apparatus will require addition of (1) Full-Time EMS Coordinator for daily Administrative oversight (Narcotics tracking, CQI, Mandated Statistical Reporting, Continuing Education, etc.) as outlined in State, Local regulations.

ALS Program Implementation Cont.

▶ Tier 3: Full ALS First Response Program

Consists of All ALS Apparatus (Paramedic on every piece of equipment)

Requires:

- ▶ Additional Licensed Personnel (18 Paramedics)
- ▶ Equipment/Supply Acquisition
- ▶ CE/Training
- ▶ Overhead Need- Implementation of a 24/7 ALS program in which all apparatus are ALS equipped will require the development of an EMS Division consisting of (1) Full-Time EMS Program Manager, and (1) Full-Time EMS Coordinator for daily Administrative oversight (Narcotics tracking, CQI, Mandated Statistical Reporting, Continuing Education, etc.) as outlined in State, Local regulations.

Financial Implications

Costs associated with expansion of service vary with the size and scope of service.

- ▶ Both programs require:
 - ▶ purchase of various medical equipment, disposable medical supplies
 - ▶ Additional administrative oversight
- ▶ Both programs will result in additional training costs.
- ▶ Members receiving certification in each of these programs will likely request incentive pay for performing higher level of services.

Overcoming Financial Implications

- ▶ Costs associated with EMS response may be offset with First Responder reimbursement
- ▶ Grant funding opportunities exist for equipment acquisition and training
- ▶ Revenue sharing agreements with contracted transport provider
- ▶ Ability to generate event “stand-by” revenues
- ▶ Revenue streams for “treat and release” interactions are evolving with changes in healthcare

Next Steps

Seeking direction on level of service expected from the Fire Department.

- 1) Maintain current level of service (Basic Life Support)
- 2) Explore expansion of service to include Limited ALS with EMT Advanced personnel
- 3) Explore expansion of service to include ALS with Paramedic personnel
- 4) - Or -
- 5) Explore expansion of service with a combination of both