

Annexing County Islands

City of Merced City Council
September 15, 2025

Jonnie Lan, AICP, Acting Planning Manager

Cortese-Knox-Hertzberg Local Government Reorganization Act

- Annexations must be approved by the relevant LAFCO.
- Annexations could be with or without election (depending on property owner or registered voter consent).
- LAFCO prioritizes annexing unincorporated “islands” to improve service delivery..
- Vary in type:
 - Standard Annexation (annexation to a city or district)
 - Annexation to correct boundary anomalies
 - Island Annexation (isolated unincorporated areas within a city boundary)
- Must be contiguous to the annexing city/district.
- Annexing jurisdiction can impose taxes, assessments, and fees post-annexation.



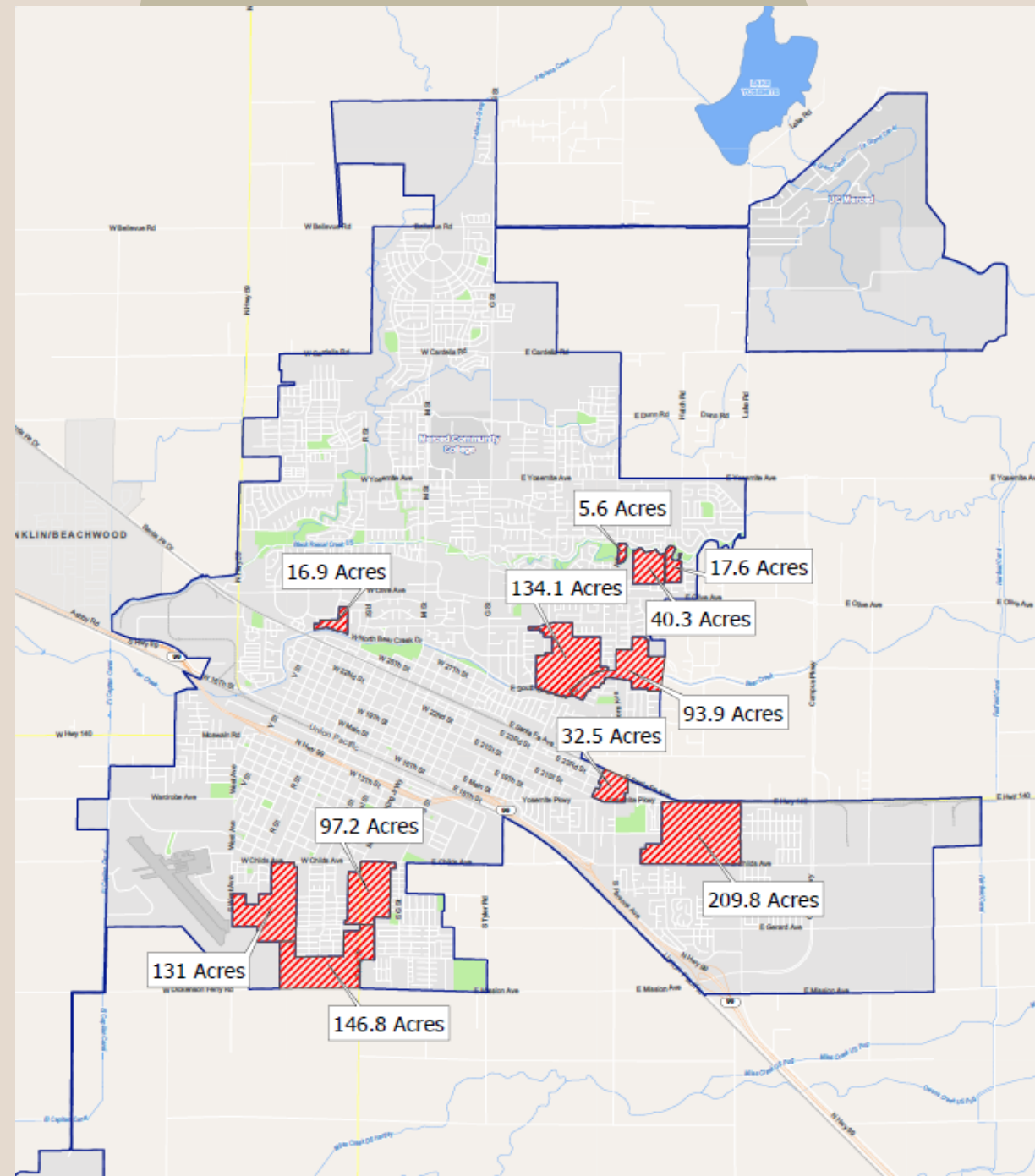
LAFCO

An “island” is an unincorporated area that is completely surrounded by a city or substantially surrounded such that it could be logically annexed.

Cortese-Knox-Hertzberg Local Government Reorganization Act
(CKH Act)

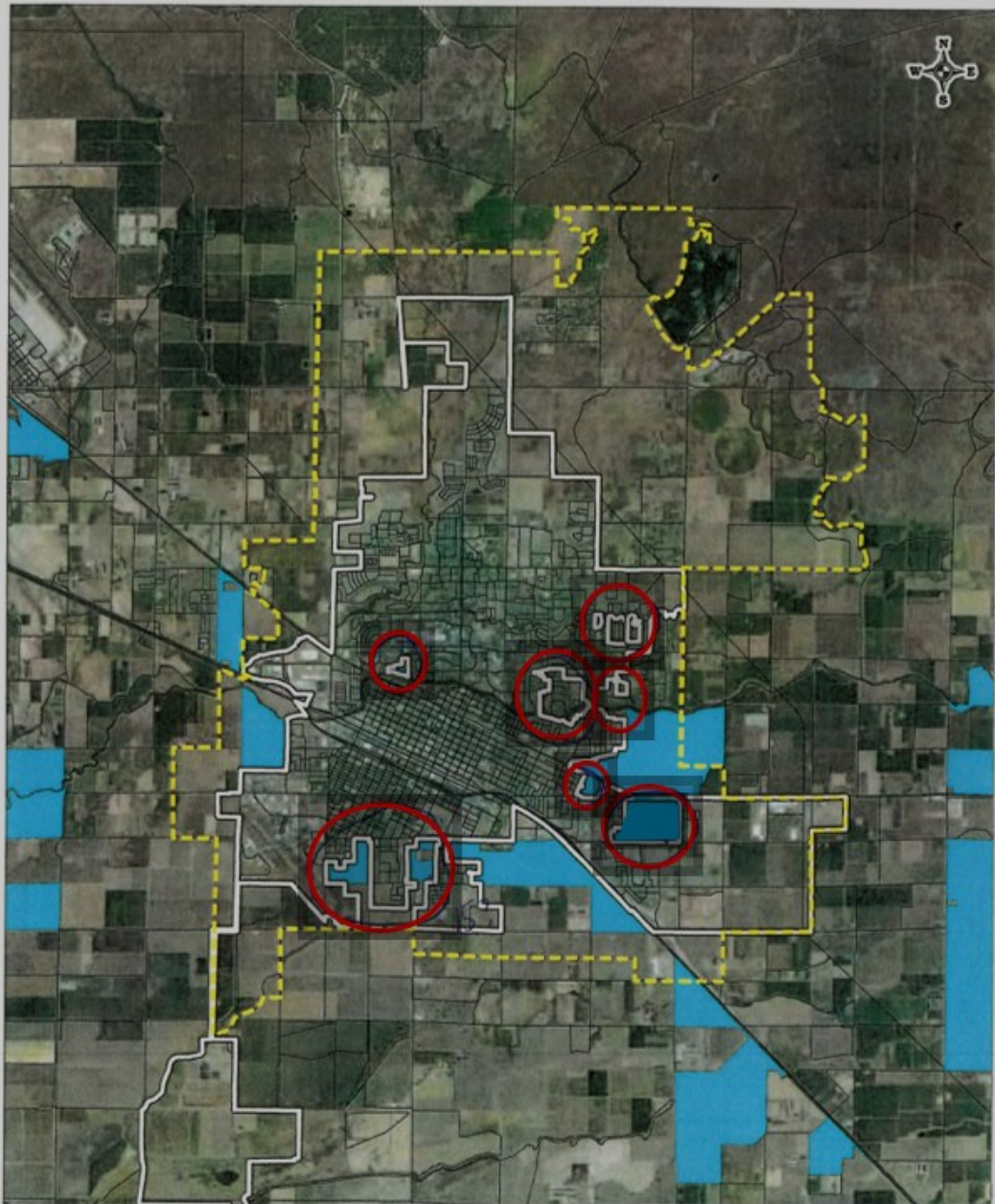
County Islands

- Areas Range from 5.6 Acres to 209.8 Acres
- Some areas have City Services (Water, Sewer, Storm Drainage, Fire Mutual Aid)
- Not all areas meet the LAFCO island definition of “substantially surrounded”



Why County Islands aren't preferable:

1. Service gaps can occur – i.e. refuse or tree trimming services
2. County Approved infrastructure can fail leading to City support anyway – City provides some water and sewer for some of the current islands because of this.
3. Public Safety or City Service inefficiencies or confusion – not so much for City or County staff, but for those living in the islands.



To Annex
County Islands
the City Must
Consider
Disadvantaged
Unincorporated
Communities

Landowners, residents,
and registered voters can
protest the annexation.

Protest proceedings are waived if:

- Annexation is proposed by resolution of the annexing city.
- The island is 150 acres or less in size.
- The island is surrounded or substantially surrounded by the annexing city.
- The island is not a gated community where services are currently provided by a community services district.
- The island is substantially developed or developing availability to public utilities, presence of public improvements or the presence of physical improvements.
- The island is receiving benefits from the annexing city or will benefit from the city.
- The island is not prime agricultural land.
- The island was not created after January 1, 2000.

Annexation Procedure after City Council Approval

1. Application to LAFCO - Usually submitted by property owners, the city, or district.
2. Environmental Review (CEQA) - LAFCO may act as lead agency or defer to the city/district.
3. Notice & Public Hearing - LAFCO must provide notice to all affected parties. Public hearing required per CKH procedures.
4. LAFCO Decision - Approve, approve with conditions, or deny.
5. Election (if required) Conducted to confirm consent of property owners or voters.
6. Recordation & Filing - Annexation is filed with the Secretary of State and the County Recorder.



Please provide Planning Staff
guidance and next steps