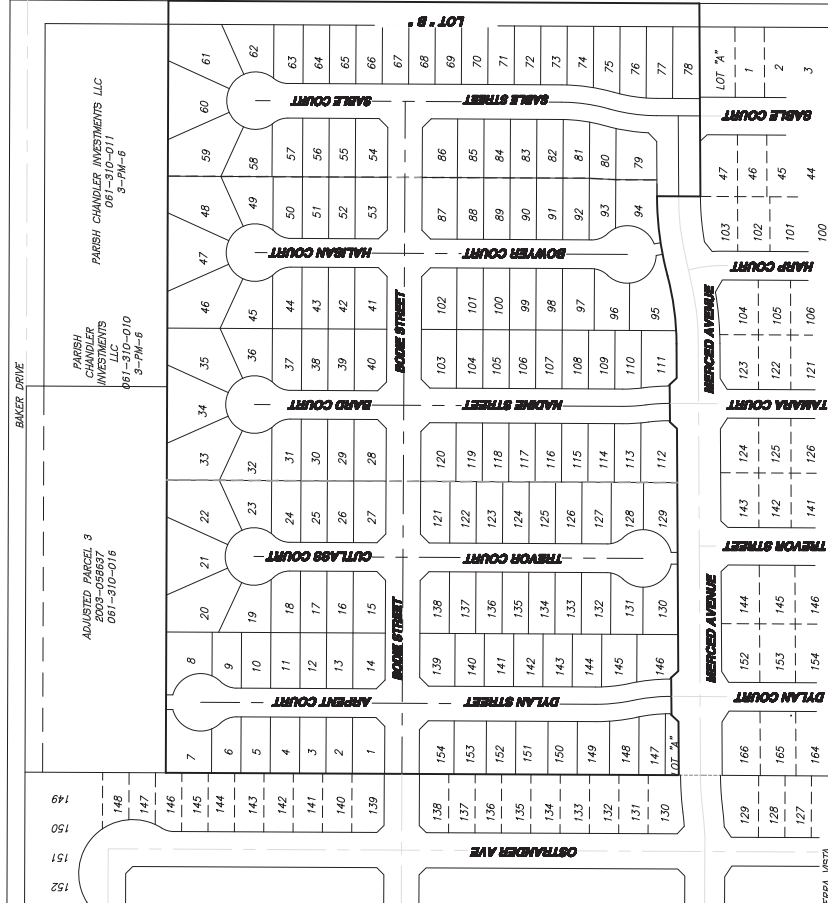


**VESTING TENTATIVE SUBDIVISION MAP FOR:
RENAISSANCE 154
MERCED, CALIFORNIA**

BEING A SUBDIVISION OF ADJUSTED PARCEL 2 AS SHOWN ON BOUNDARY ADJUSTMENT NUMBER 03-13 AND RECORDED AS INSTRUMENT NUMBER 2003-058637, MERCED COUNTY RECORDS PORTION SECTION 27, TOWNSHIP 7 SOUTH, RANGE 14 EAST, MOUNT DIABLO BASE & MERIDIAN



BENCHMARK ENGINEERING & LAND SURVEYING, INC.
915 17th STREET • MODesto, CALIFORNIA • 95354
(209) 548-9300 FAX (209) 548-9305

BENCHMARK ENGINEERING & LAND SURVEYING, INC.
915 17th STREET • MODesto, CALIFORNIA • 95354
(209) 548-9300 FAX (209) 548-9305

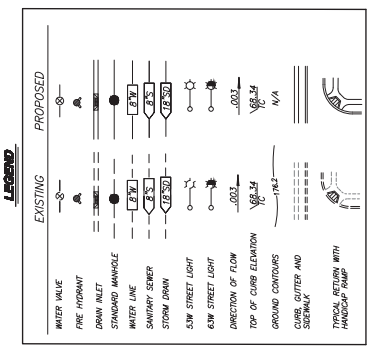
COVER SHEET
VESTING TENTATIVE SUBDIVISION MAP
RENAISSANCE 154
MERCED, CALIFORNIA

DATE: 06-15-2022
DRAWN BY: JAC
CHECKED BY: JAC
SCALE: AS SHOWN

SHEET NUMBER: 1
OF 4 SHEETS

INDEX

SHEET NO.	DESCRIPTION
1	COVER SHEET
2	LOT DIMENSION PLAN
3	CONCEPTUAL GRADING PLAN
4	CONCEPTUAL COMPOSITE UTILITY PLAN



PRELIMINARY - NOT FOR CONSTRUCTION

NO.	DESCRIPTIONS	DATE	APPROVED

BENCHMARK ENGINEERING & LAND SURVEYING, INC.

915 17th STREET • COSTA MESA, CALIFORNIA 92626
 (714) 440-8300 FAX (714) 440-9805

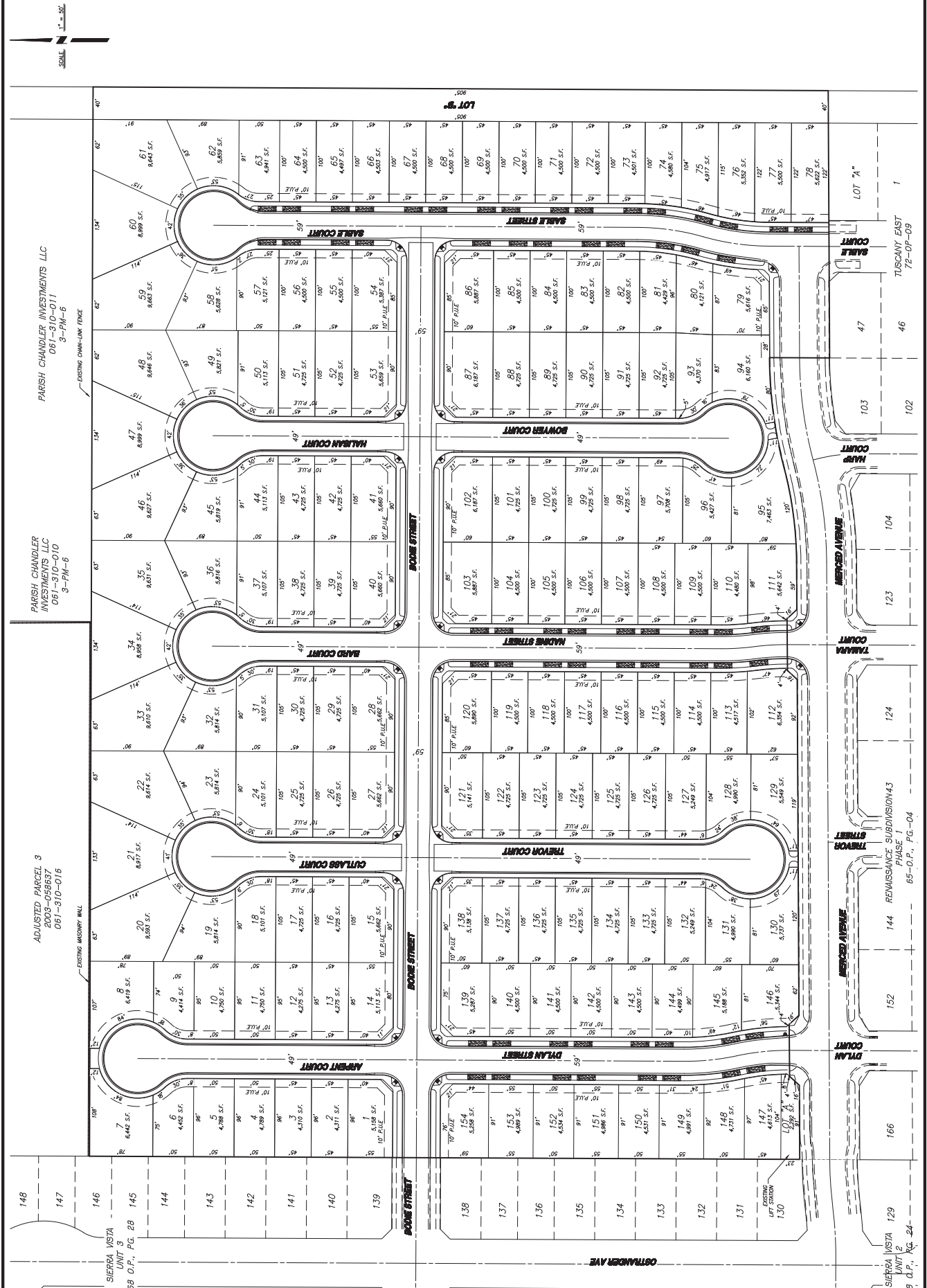
LOT DIMENSION PLAN

WESTING DEVELOPMENT SUBDIVISION MAP
 RENAISSANCE 164
 ANNEAS, CALIFORNIA

JOB NO. 202392
 DATE: 07-15-2022
 DRAWN BY: []
 CHECKED BY: []
 SCALE: AS SHOWN

SHEET NUMBER
2

OF 4 SHEETS



PRELIMINARY - NOT FOR CONSTRUCTION

NO.	DESCRIPTIONS	DATE	APPROVED

BENCHMARK ENGINEERING & LAND SURVEYING, INC.

915 17th STREET • COSTA MESA, CALIFORNIA • 92626
(714) 446-8800 FAX (714) 446-8805



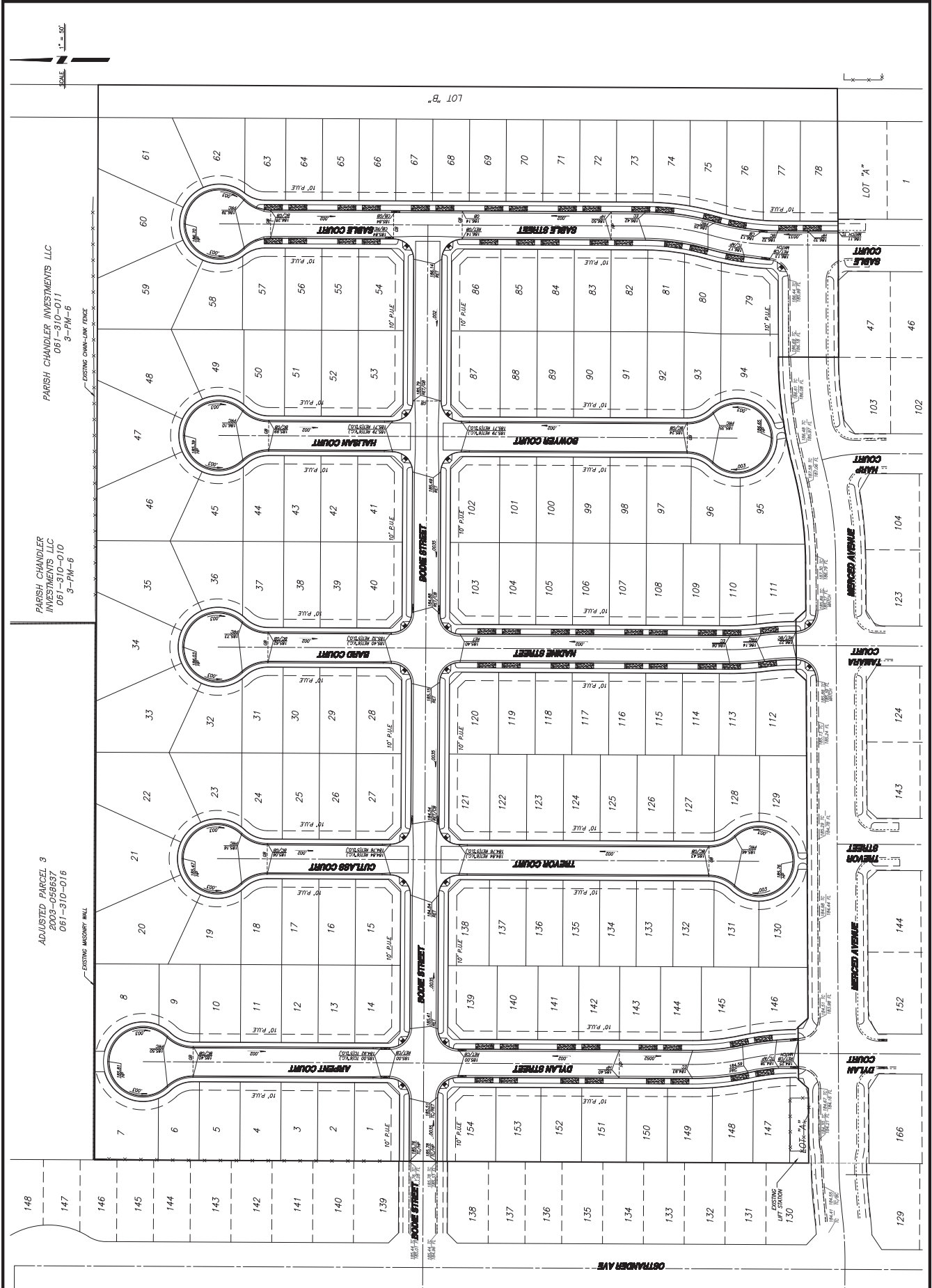
CONCEPTUAL GRADING PLAN

WESTING TRINITARIAN SUBDIVISION MAP,
RENAISSANCE 164
SAN JOSE, CALIFORNIA

JOB NO. 2023022
DATE: 02-15-2022
DRAWN BY: [Redacted]
CHECKED BY: [Redacted]
SCALE: AS SHOWN

SHEET NUMBER
3

OF 4 SHEETS



ADJUSTED PARCEL B
2003-058637
061-310-016

PARISH CHANDLER INVESTMENTS LLC
INVESTMENTS LLC
061-310-010
8-PM-5

PARISH CHANDLER INVESTMENTS LLC
061-310-011
3-PM-6

PRELIMINARY - NOT FOR CONSTRUCTION

REVISIONS: 02/15/2022

NO.	DESCRIPTIONS	DATE	APPROVED

BENCHMARK ENGINEERING & LAND SURVEYING, INC.
 919 17th STREET • COSTA MESA, CALIFORNIA • 92626
 (714) 446-8900 FAX (714) 446-8905

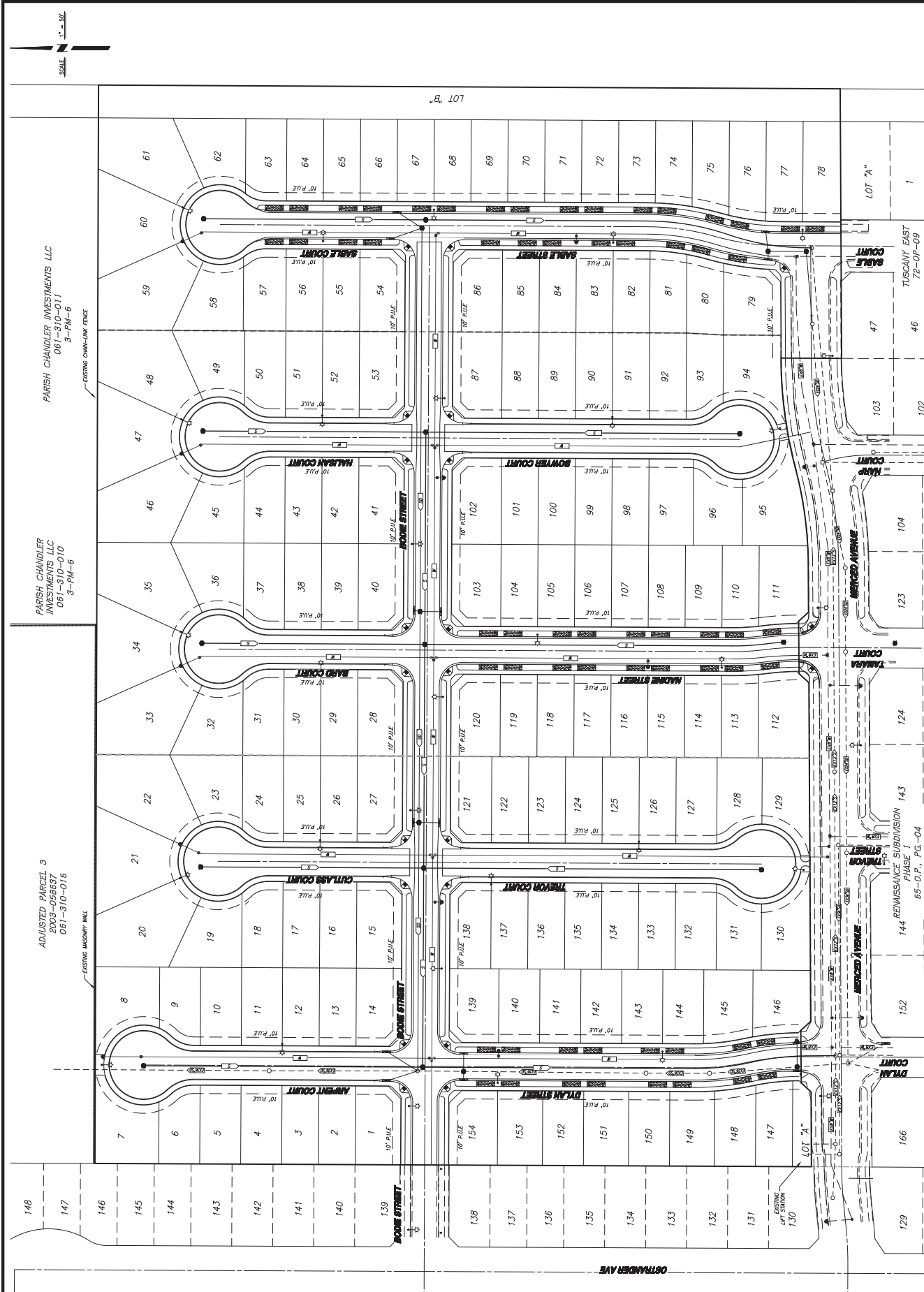


CONCEPTUAL COMPOSITE UTILITY PLAN
 WESTING TREATMENT SUBDIVISION MAP
 RENAISSANCE 164
 ANIMAS CALIFORNIA

JOB NO. 202302
 DATE: 07-15-2022
 DRAWN BY: [blank]
 CHECKED BY: [blank]
 SCALE: AS SHOWN

SHEET NUMBER
4

OF 4 SHEETS



PRELIMINARY - NOT FOR CONSTRUCTION