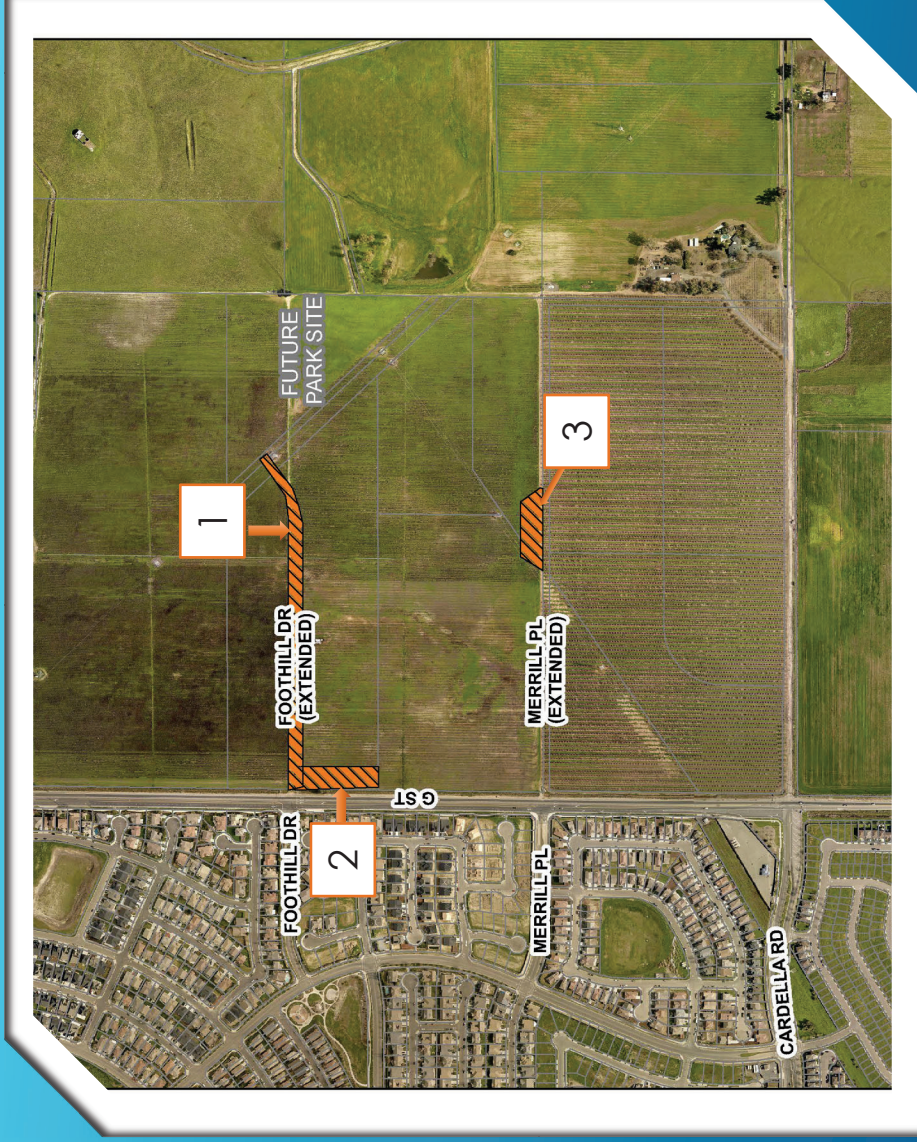


Vacation #20-02

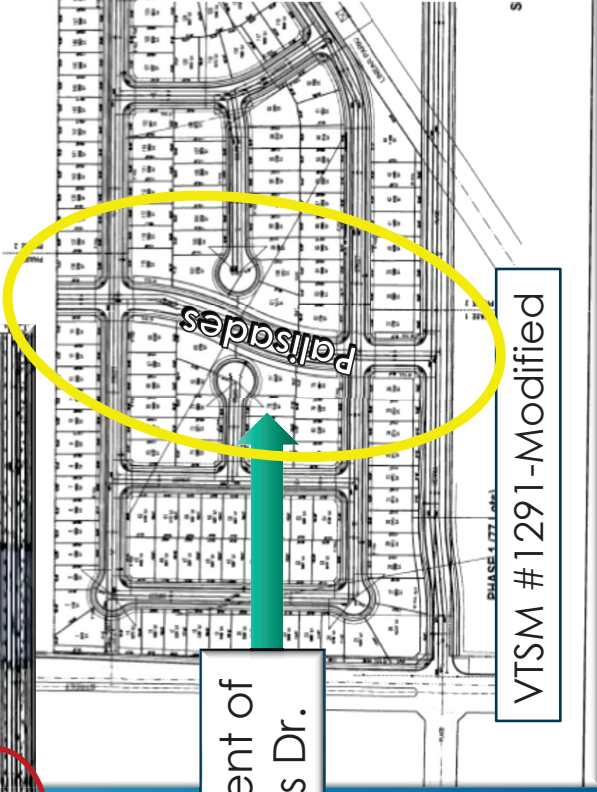
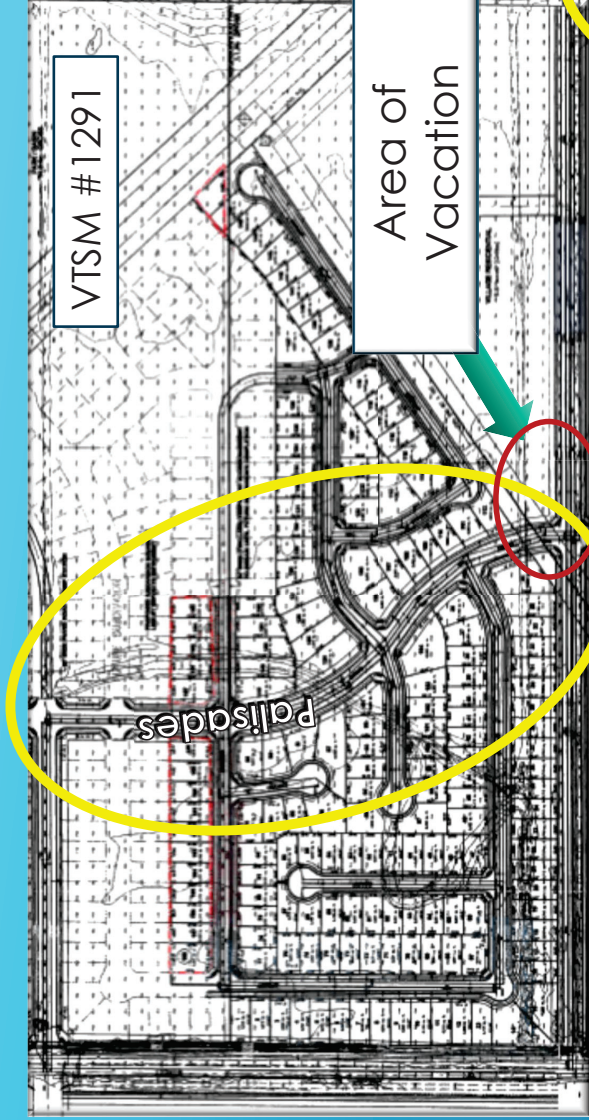
Location Map

Three separate vacation areas

1. Park Access along Foothill Drive (extended)
2. Access easement on G Street
3. Merrill Place



Merrill Place



Realignment of Palisades Dr.

Vacation Area #3, no longer needed.



- ▶ **Approve Resolutions to vacate:**
 1. **Park Access along Foothill Drive (extended);**
 2. **Access easement on G Street;**
 3. **Merrill Place**

City Council Action