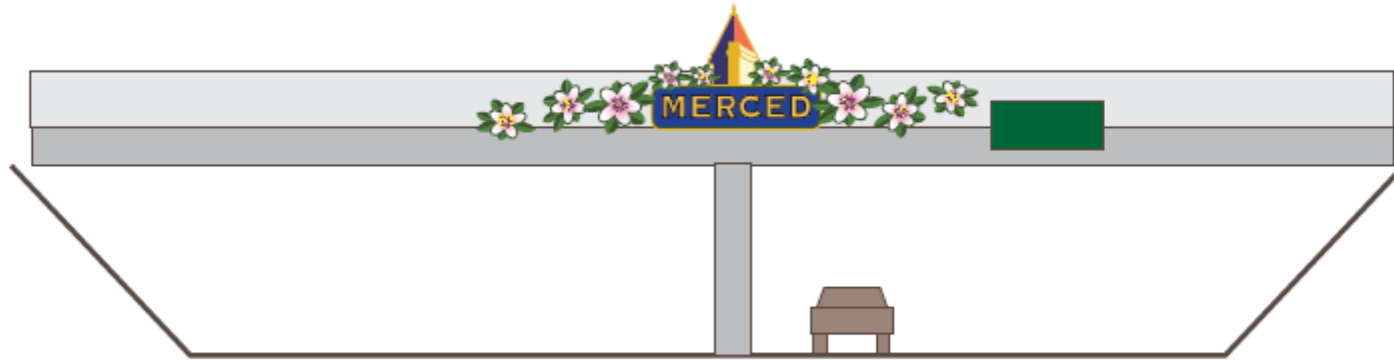
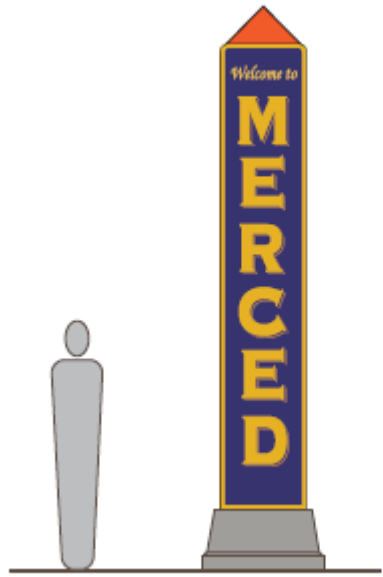
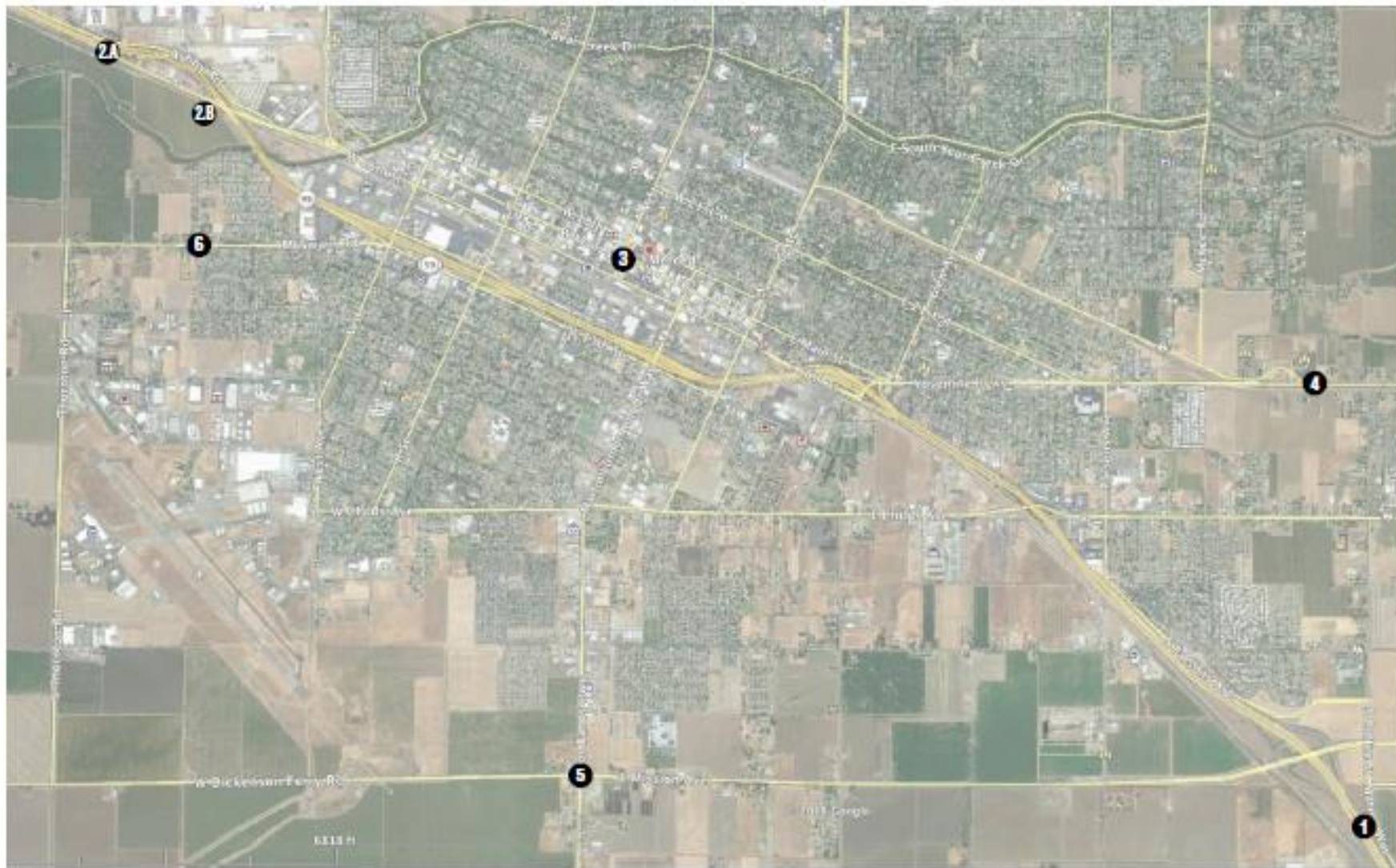




# Welcome Sign Presentation

BY STEVE CARRIGAN, CITY MANAGER





MERCED - SIGN LOCATIONS

PROJECT Merced Sign Locations			
DATE 01	DESIGNER JWS	DATE 08/19	



1 NORTH BOUND HWY. 99 AT CITY LIMIT

PROJECT Merced Sign Location			
DATE 02	DESIGNED BY JWS	DATE 4/6/19	





2 SOUTH BOUND HWY. 99 AT 16TH EXIT



21 MODIFIED CAL TRANS SIGN

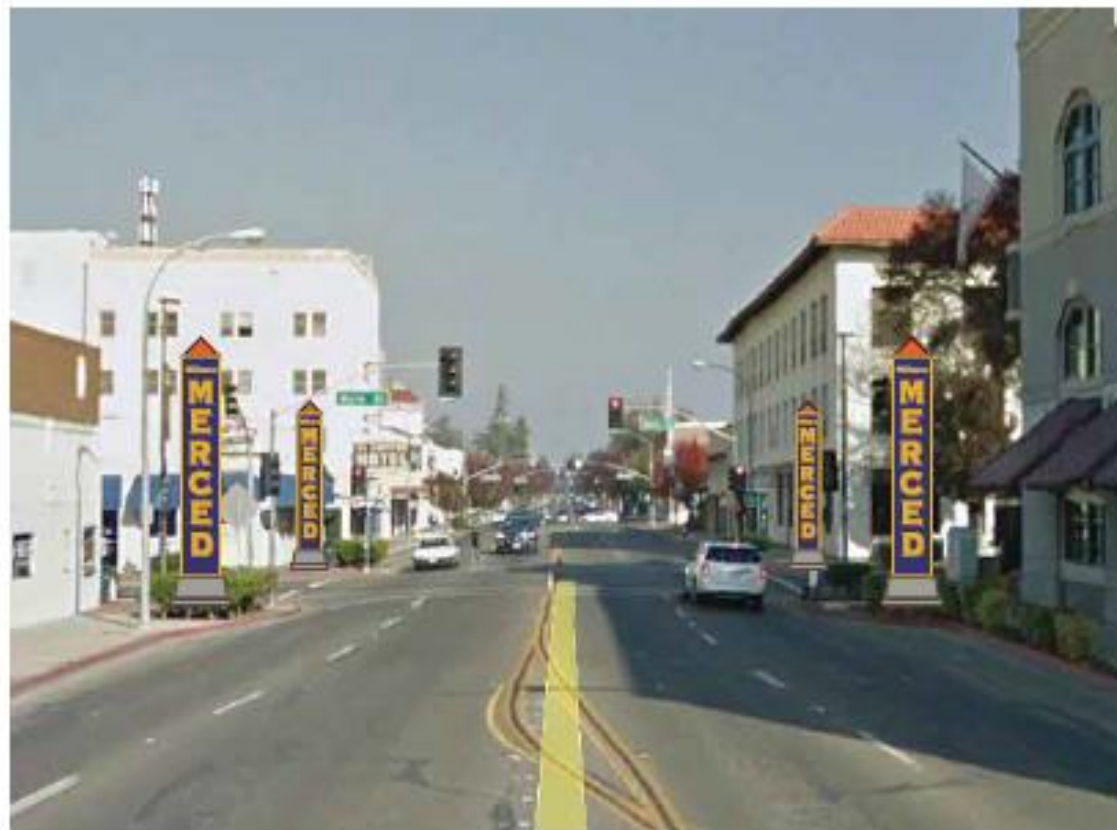


21 HWY. 99 AT 16TH ST. EXIT

PROJECT Merced Sign Locations			
DATE 02/15	DESIGNED BY JMB	DATE 4/4/19	



**3** ALTERNATE - MONUMENT ON EACH CORNER



**3** MAIN ST & M ST.



1 WEST BOUND HWY 140 AT SANTA FE AVE



2 NORTH BOUND HWY 140 AT MISSION AVE



3 EAST BOUND HWY 140 AT MAGGADAN



## Merced Sign Program Preliminary Cost Analysis

April 4, 2019

(Costs assume that projects may **not** be done concurrently)

Description	Sign #	Design Development Construction Documents (DD, CD's)	Permit Application Assistance (PAA)	Construction Administration (CA)	Fabrication/Installation (Fab & Inst)	Totals
Freeway Overpass Sign Hwy 99	1	\$5,000	\$3,000	\$2,000	\$70,000-\$80,000	\$80,000-\$90,000
Modified CalTrans sign Hwy 99	2.A	\$800	\$750	\$600	\$1,000-\$1,500	\$3,150-\$3,650
Monument Hwy 99	2.B	\$2,500	\$500	\$1,200	\$35,000-\$40,000 (medium size)	\$39,200-\$44,200
Main Street + M (4) Pylons	3	\$4,000	---	\$2,000	\$120,000-\$160,000	\$126,000-\$166,000
Monument West Bound 140	4	\$2,000	\$750	\$1,200	\$40,000-\$60,000 (large size)	\$43,950-\$63,950
Monument North Bound Hwy 59	5	\$2,000	\$500	\$1,200	\$40,000-\$60,000 (large size)	\$43,700-\$63,700
Monument East Bound Hwy 140	6	\$2,000	---	\$1,200	\$35,000-\$40,000 (medium size)	\$38,200-\$43,200



# Next Steps and Recommendations

Next Phase:

- ❖ **Prepare design drawings/3-year plan cost – Simon Andrews**
- ❖ **Council Approval**
- ❖ Prepare construction specs for fabrication and installation
- ❖ Permits
- ❖ Construction Administration



Questions?