

Vacation #22-04

Paseo Subdivision



El Capitan
High School

Subject Site

CST

BARCLAY WAY

BELLEVUE RD

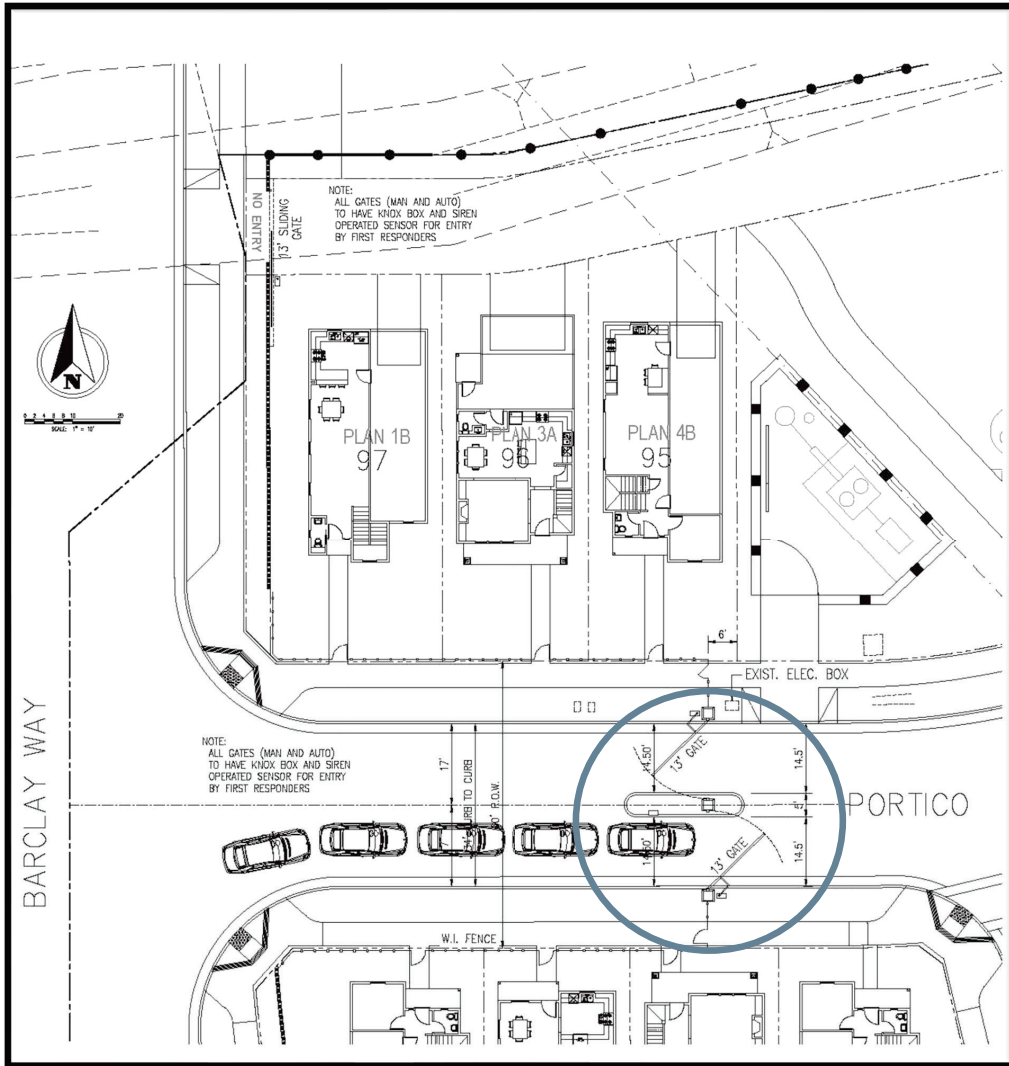
DEXTER CT

WEBBER CT

DURANT WAY

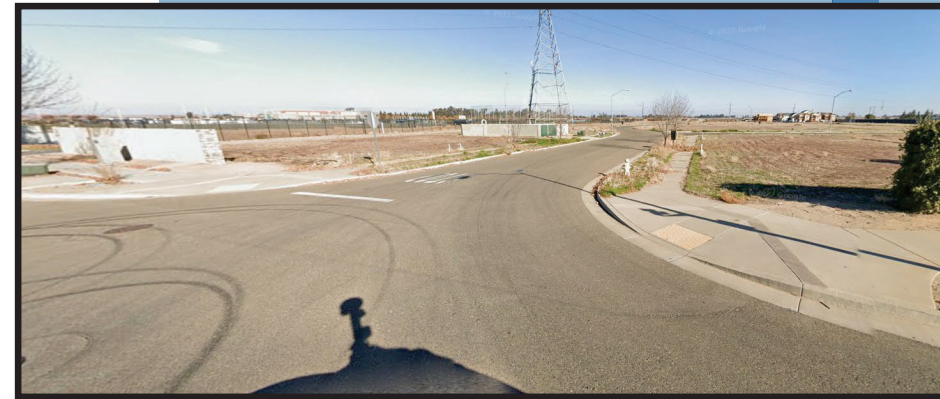
Background

- The Paseo Subdivision was approved, and the final map recorded in 2007.
- The subdivision contains 150 single-family lots ranging in size from 1,860 s.f. to 2,640 s.f.
- The western half of the subdivision was changed to commercial in 2011, but was reverted back to residential in 2021.
- The subdivision is currently enclosed on three sides.
- The small lots and close proximity of the homes gives the subdivision the feel a condominium community or apartment complex.
- The developer feels the subdivision would be enhanced and provide a better sense of security for the property owners if the entrance was gated.

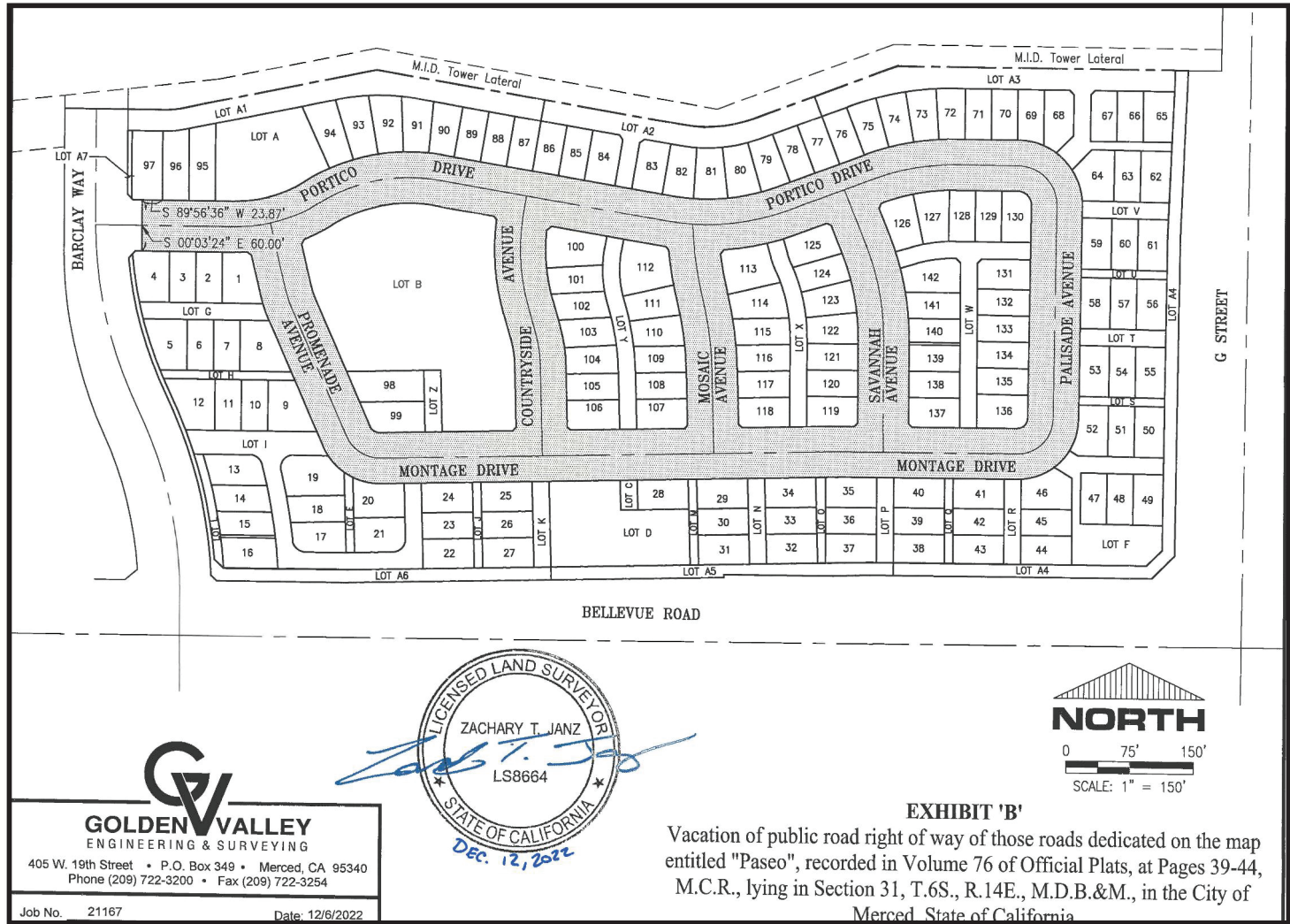


Paseo Subdivision

- Gated Entry



Entrance from Barclay Way



GOLDEN VALLEY
 ENGINEERING & SURVEYING
 405 W. 19th Street • P.O. Box 349 • Merced, CA 95340
 Phone (209) 722-3200 • Fax (209) 722-3254

Job No. 21167 Date: 12/6/2022

EXHIBIT 'B'
 Vacation of public road right of way of those roads dedicated on the map entitled "Paseo", recorded in Volume 76 of Official Plats, at Pages 39-44, M.C.R., lying in Section 31, T.6S., R.14E., M.D.B.&M., in the City of Merced, State of California

Previous Actions

- On February 8, 2023, the Planning Commission made a finding that the vacation is consistent with the General Plan;
- On February 21, 2023, the City Council adopted Resolution #2023-11 setting a public hearing regarding the vacation for March 20, 2023.

City Council Action

- Hold a public hearing regarding Vacation #22-04.
- Approve/Disapprove/Modify:
 - Vacation #22-04

Questions...