

Active Transportation Program (ATP) Safe Routes to Schools Project

City of Merced
Bicycle and Pedestrian Committee
April 28, 2026



Background

- ❖ Call for Projects issued 3/24/2026
- ❖ Application submission deadline 6/22/2026
- ❖ Proposed “Safe Routes to Schools” grant application
- ❖ Coordinating with multiple school districts and agencies

Purpose and Goals of ATP

- ❖ Encourage active modes of transportation like walking, bicycling, and rolling
- ❖ Improve public health by promoting physical activity
- ❖ Increase safety and mobility for people walking and biking
- ❖ Creating connectivity, mobility, and accessibility, especially for disadvantaged communities



Community Outreach



- ❖ Critical to the application/project scope process
- ❖ Need resident input on challenges or safety concerns
- ❖ Previous Outreach Meetings
 - ❖ Tenaya Middle School **4/14**, City Hall **4/15**, Farmdale Elementary **4/29**
- ❖ **Engage.cityofmerced.gov**
 - ❖ Project Website for Updates/Feedback

Proposed ATP Projects



Item	Location	Limits	Mitigation Measure	School and Proximity
A	Santa Fe Ave	Glen Ave. to Green St.	Addition of 8-foot multi use path, curb and gutter street lighting and round about at Santa Fe Ave. and Green St.	<ol style="list-style-type: none"> 1. Our Lady of Mercy Elementary School - fronting project 2. Hoover Middle School - Immediately west of Glen Ave. 3. Ada Givens Elementary and Preschool - 2,000 ft north along Green St.
B	Yosemite Pkwy. (Hwy 140)	at Laurel Ave. and Shirley St intersection	Addition of HAWK system and curb ramp modifications	<ol style="list-style-type: none"> 1. Charles Wright Elementary School - 300-feet from Laurel Ave. and 1,891-feet from Shirley St. 2. Golden Valley - 3,,200-feet from Shirley St. and 4,800-feet from Laurel Ave.
C	Childs Ave. and N St.	Manzanita Ave. intersection; Coffee St. to Medieval St.	HAWK system at Manzanita Ave. and 8-foot multi use path, curb and gutter street lighting from Coffee St. to Medevil St.	<ol style="list-style-type: none"> 1. Weaver Elementary - Adjacent to Multi-Use Pathway 2. Golden Valley - Adjacent to HAWK system 3. Pioneer Elementary School - 3,000-feet from Multi-Use Pathway
D	Childs Ave. and N St.	Childs Ave. and "M" St. intersection and "N" St. at Cartmell Dr.	HAWK system at Childs Ave. and flashing beacon at N St. at Cartwell intersections. Both include curb ramp modifications and striping	<ol style="list-style-type: none"> 1. Alcia Reyes Elementary School - Adjacent to Flashing Beacon and 570-feet from "M" Street Where HAWK is Proposed 2. Tenaya Middle School - 1,395-feet from Flashing Beacon and 1,580-feet from HAWK
E	West Ave. south of Hwy 140	Around the Gracy Elementary School	flashing beacon at West Ave. and Heritage Dr., HAWK system at 11 St. and V St. and curb ramps within the surrounding area.	<ol style="list-style-type: none"> 1. Gracy Elementary School - Adjacent to Flashing Beacon and 670-feet from "W" Street Where HAWK is Proposed 2. Sheehy Elementary School - 3,000 ft from "W" Street Where HAWK is proposed 3. Tenaya Middle School - 4,500-feet from Flashing Beacon and 1-mile from HAWK
F	Parsons Ave	Parsons Ave and Brookdale Dr. intersection	Addition of HAWK system and curb ramp modifications	<ol style="list-style-type: none"> 1. Chenoweth School - Adjacent to HAWK system
G	"G" Street	From Community College Dr. to Cardella Rd.	Addition of 8-foot multi use path, street lighting, curb and gutter	<ol style="list-style-type: none"> 1. Merced College - Adjacent to multi-use pathway 2. Cruickshank Middle School - 1,900 feet away along Mercy Ave. 3. El Capitan High School - 1 mile north on G Street

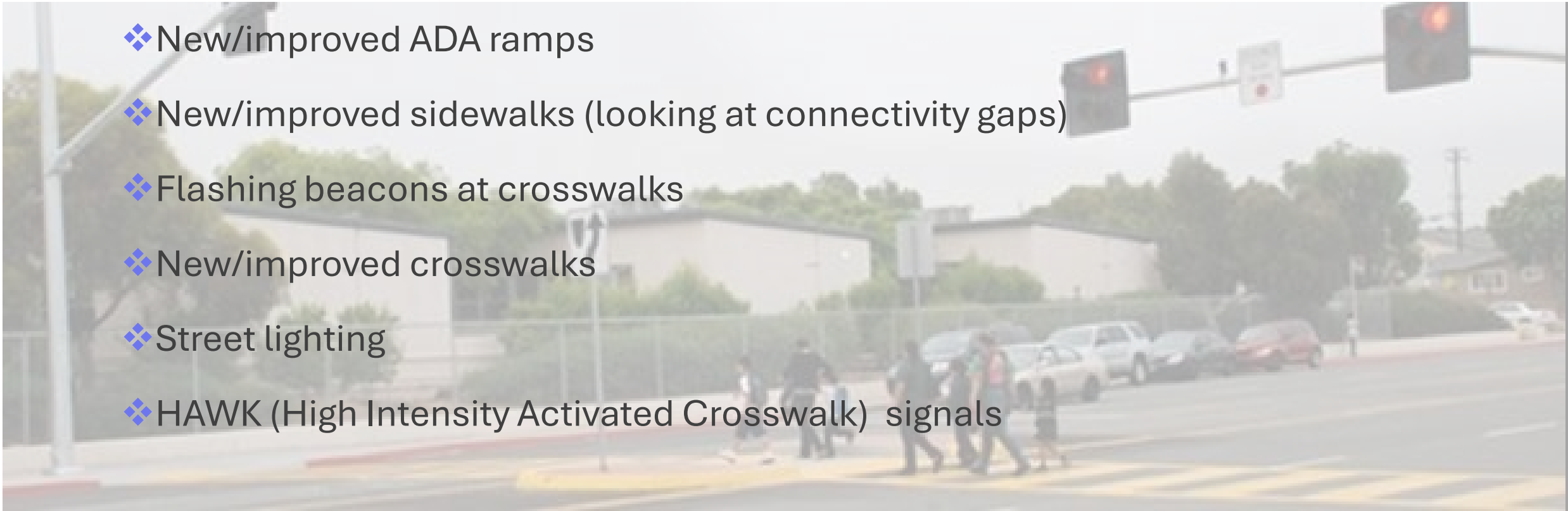
Proposed ATP Projects



Item	Location	Limits	Mitigation Measure	School and Proximity
H	Around Hoover/OLM Schools	Surrounding area of Hoover Middle School and OLM School	curb ramps, sidewalk, curb and gutter, flashing beacons and striping around Hoover Middle School and Our Lady of Mercy Elementary School	1. Hoover Middle School - Adjacent to project 2. Our Lady of Mercy Elementary School - Adjacent to project
I	"G" St.	"G" St. and 23rd St. intersection	Addition of HAWK system and curb ramp modifications	1. Hoover Middle School - 2,000 feet from HAWK system 2. Our Lady of Mercy Elementary School - 4,300 feet from HAWK system 3. Yosemite High School - 1,200-feet from HAWK system 4. John Muir Elementary School - 2,200 feet from HAWK system
J	Parsons Ave	Cross Bear Creek	Pedestrian Path over Bear Creek	1. Ada Givens Elementary School - 850 - feet from proposed bridge 2. St. Paul Lutheran School - 2,600 feet from bridge 3. Our Lady of Mercy Elementary School - 3,200-feet from bridge 4. Hoover Middle School - 1.0-mile from bridge
K	Parsons Ave	Bear Creek to Teak Ave.	Addition of 8-foot multi use path, street lighting, curb and gutter	1. Ada Givens Elementary School - 920 - feet from proposed bridge 2. St. Paul Lutheran School - 2,600 feet from bridge 3. Our Lady of Mercy Elementary School - 3,200-feet from bridge 4. Hoover Middle School - 1.0-mile from bridge
L	Around Chenoweth	Olive to El Portal around Chenoweth	Curb Ramps around Chenoweth School	1. Chenoweth School adjacent to project improvements
M	Rahilly Park	Rahilly Park to Parson Ave	Connect bike path from Rahilly park to school	1. Chenoweth School adjacent to project improvements
N	Cardella Rd	G Street to Lake Road	Addition of 8-foot multi use path, street lighting, curb and gutter	1. UC Merced - adjacent to proposed improvements 2. El Capitan High School - 700-feet from proposed path
O	Childs Ave.	"B" St. to De Long St.	Addition of 8-foot multi use path, street lighting, curb and gutter	1. Stowell Elementary School - 2,100-feet from proposed path 2. Golden Valley High School - 4,700-feet from proposed path 3. Farmdale Elementary School - 1.2-miles from proposed path

Types of Pedestrian Improvements

- ❖ New/improved ADA ramps
- ❖ New/improved sidewalks (looking at connectivity gaps)
- ❖ Flashing beacons at crosswalks
- ❖ New/improved crosswalks
- ❖ Street lighting
- ❖ HAWK (High Intensity Activated Crosswalk) signals



What is a Hawk System?

- ❖ HAWK – High Intensity Activated Crosswalk
- ❖ Activated by push button
- ❖ Sequence of flashing/solid, yellow & red lights
- ❖ Driver mandatory stop required by law



Share Your Ideas

- ❖ Visit our project website **[Engage.cityofmerced.gov](https://engage.cityofmerced.gov)**
 - ❖ Email directly to grant administrator
 - ❖ Submit feedback directly on website
- ❖ Next Outreach Meeting
 - ❖ Farmdale Elementary – Wednesday April 29th 6PM