

ORIGINAL

City of Merced



Request for Bids

**Compact Track Loader
(Life Cycle Cost Analysis)**

Overview, Qualifications, Definitions

I. Overview of Requirements

- A. City is seeking Bids for **one Compact Track Loader** as per Exhibit A – Specifications as listed in the Bid Line Items.

II. Bidder Qualifications

- A. Bidders must be an authorized dealer for the specified equipment capable of selling, delivering, and servicing (optional) the items as specified in Exhibit A.
- B. Bidders must submit the completed Bid Form as their bid response. Any deviations from the list of specifications shall be noted on a separate page in detail and submitted as an attachment to the Bid Form.
- C. Bidders must state in their bid response the delivery time in calendar days. Bids submitted without a clear statement of delivery time may be rejected.

III. Definitions, Acronyms, and Abbreviations

- A. Bid Documents = City documents, forms, exhibits, etc. attached to Bid.
- B. Bidder = the prospective or actual bidder, but not awarded.
- C. City = City of Merced.
- D. Contractor = the awarded bidder.
- E. CR = City Representative.
- F. Bid = paper bid submitted by bidders.
- G. RFB = Request for Bids: City-provided electronic documents/postings.

(CONTINUED ON NEXT PAGE)

Exhibit A: Specifications**I. Specifications****A. General**

1. Submit one original and one copy, signed and dated, **Bid Form** on paper as your bid response.
2. **SUBSTITUTIONS** and **ALTERNATES** are **NOT acceptable** unless City has stated otherwise in the Specifications.
3. Do **NOT** include additional optional equipment or packages unless it is required by the manufacturer's standards to conform to our specifications.
4. Various makes and various models may be bid as long as they conform to the specifications requirements. Makes and models, when cited below, are guidelines regarding the classifications and type of vehicles required by City; they are not shown in any order of preference.
5. **Life Cycle Cost Analysis.** City may (at its discretion) conduct a Life Cycle Costs Analysis (LCCA) for each bid, which will include the vehicle costs, delivery costs, extended warranty cost (if so required); projected resale value*; maintenance**, repair**, and fuel** costs based on the most recent like model and year available at the time bids are received. Bidders will need to factor the LCCA elements into their bid prices. See Sample Form below for typical LCCA factors.

* www.BlackBookPricePoint.com; ** www.Edmunds.com.

B. Sample Form: Projected Life Cycle Cost Analysis (LCCA)

Bidder Name, Vehicle Make & Model		Bidder 1	Bidder 2	Bidder 3
Dealer:		Holt of California		
City:		Los Banos		
Make:		Caterpillar		
Model:		255 HF		
Trim:		T5		
Year:		2024		
Bid Price		Bidder 1	Bidder 2	Bidder 3
1	BASE UNIT (per specifications INCLUDING <i>required</i> options)	\$ 80,643.41	\$	\$
2	Desired OPTIONS (IF listed as a Bid line item) NA	\$ 9,500.00	\$	\$
3	Total Price (Base Unit + Desired Options)	\$ 90,143.41	\$	\$
4	EXTENDED WARRANTY (IF listed as a bid item) NA	\$ 0.00	\$	\$
5	SALES TAX 8.25% tax amt	\$ 7,436.83	\$	\$
6	DELIVERY COSTS (per Vehicle to FOB Merced CA)	\$ 0.00	\$	\$
7	TIRE FEES \$1.75 X Number of tires per Vehicle #/unit	\$ 0.00	\$	\$
8	Total Bid Price per Vehicle (Add lines 1-8)	\$ 97,580.24	\$	\$
	Total Bid Price X QTY	\$ 97,580.24	\$	\$
Life Cycle Cost Factors		Bidder 1	Bidder 2	Bidder 3
9	PROJECTED RESALE VALUE * (shown as negative)	(\$)	(\$)	(\$)
10	DEPRECIATION (line 3 - line 9)	\$	\$	\$
11	MAINTENANCE **	\$	\$	\$
12	REPAIR **	\$	\$	\$
13	FUEL **	\$	\$	\$
14	Total LCC (lines 10-13)	\$	\$	\$
15	Total Ext Warranty, Tax, Delivery, Tire Fees (lines 4-7)	\$	\$	\$

Vehicles

16	Grand Total LCC (subtotal LCC x QTY)	#ofunits	\$	\$	\$
----	---	-----------------	-----------	-----------	-----------

* Projected Resale Value based on www.BlackBookPricePoint.com 72-month residual.

** Maintenance, Repair, and Fuel Costs based on www.Edmunds.com

C. Specifications

Bid specifications for Compact Track Loader

1. Engine horsepower minimum requirement of 74 HP.
2. Unit to be furnished with enclosed cab with climate control AC, heater, and radio.
3. Unit to be equipped with joystick controls for maneuvering and bucket operation.
4. Unit to be equipped with auxiliary hydraulic connections for accessories and appropriate hydraulic capacity to operate attachments.
5. Unit to be equipped with hydraulic quick connectors for in cab attachment of buckets and accessories.
6. Unit to have a minimum operating weight of 9100 pounds.
7. Unit to come with standard duty bucket with a minimum bucket width of 68 inches.
8. Unit to come equipped with 15-inch tracks with standard duty tread suitable for all terrain types.
9. Unit to come equipped with additional 74" hopper sweeper with poly bristles without gutter attachments or dust control. Angle brooms or units without collection hoppers are non-qualified.

Vehicles

CITY OF MERCED
PURCHASING DEPARTMENT
purchasing@cityofmerced.org

BID FORM

MAIL SEALED BIDS TO:
678 W 18th St Merced CA
95340

PARCEL POST OR HAND
DELIVER BIDS TO:
2525 "O" ST MERCED CA
95340

QUOTE HEREON YOUR LOWEST PRICE F.O.B. MERCED (INCLUDING BUT NOT LIMITED TO DISCOUNTS, REBATES, REGISTRATION AND OTHER FEES IN UNIT PRICE) FOR THE FOLLOWING EQUIPMENT, MATERIALS, SUPPLIES OR SERVICES. NO ALLOWANCE FOR FREIGHT, CARTAGE, PACKING, OR POSTAGE UNLESS SPECIFIED ON THIS BID. WHERE BRAND OR MAKE IS SPECIFIED, SIMILAR OR EQUAL WILL BE CONSIDERED.

SEALED BIDS DUE:

Tuesday, August 6th, 2024 at 2:00 P.M.

DEPT: Land Application

REQUISITION NO: 08062024

QTY	UOM	DESCRIPTION	PRICING	
1	Each	Compact track loader (Specs 1-8)	UNIT PRICE	\$80,643.41
1	Each	Hopper sweeper (Spec 9)	UNIT PRICE	\$9,500.00
<p>Notice: Submit one original bid and one copy</p>			DELIVERY COST	0.00
			SALES TAX (8.25%)	\$7,436.83
			CA TIRE FEE	0.00
			EXTENDED WARRANTY	0.00
			TOTAL AMOUNT	\$97,580.24

* BID OPENING WILL BE HELD IN THE PURCHASING OFFICE CONFERENCE ROOM AT 2525 "O" STREET, MERCED, CA *

We have stated hereon the prices at which we will furnish and deliver the equipment, materials, supplies or services as specified above.

COMPANY: Holt of California

BY: Louie Soares

TITLE: Territory Manager

SIGNATURE:

DATE: 8-2-24

PHONE: 209-401-4445

EMAIL: Isoares@holtca.com

Delivery will be made in 14 days after receipt of order (A.R.O.), except as otherwise indicated.

Note: The City reserves the right to reject any and or all bids, split the bid award, or to

accept the bid that best serves the public purpose, even though it may not be the lowest.

PAYMENT TERMS: (Net 10, 30, 45) Net 30 Days

NOTICE:
ALL BIDS MUST BE SIGNED

Exhibit B: Pricing

I. Quantities

- A. The quantities are firm fixed quantities for this bid.
- B. City may purchase additional units at the same bid prices for up to one year at same price based on model availability and the exact same configuration as in Exhibit A-Specifications.

II. Pricing

A. Pricing Terms

- 1. **Unit Price:** includes everything, including but not limited to transportation, delivery, offloading; registering units with DMV; providing exempt status license plates; includes all preparation, documentation, and transfer charges; includes environmental and disposal fees; no other costs will be considered.
- 2. **Discounts:** all applicable discounts must be factored into the unit price.
- 3. **Fixed Unit Prices:** prices are fixed through the delivery period for all units.
- 4. **Government-Mandated Taxes and Fees:** must be included in unit prices.
- 5. **CA Tire fee:** is the per tire fee that the State of California assess, which is subject to change. This amount is included in the Bid as a fixed cost.
- 6. **Sales Tax:** City will add the appropriate sales tax to each order.

B. Disallowed Costs

- 1. **Business Permits, Licenses and Fees:** obtain, at Contractor's sole expense, all permits and licenses required in connection with providing the required units and in Contractor's name.
- 2. **Additional charges:** not allowed, no fuel surcharges, no mileage rates.

C. Bid Results Price Sheet

- 1. The award bidder's Bid Form sheet, as accepted by the City, will be incorporated as part of Exhibit B.

END OF EXHIBIT B

Bid Terms and Conditions

Specifications are intended to describe the specific type, size and quality of equipment which will best meet the demands of the City. They are not intended to favor any one brand or make. The mention herein of any particular name of equipment or material merely serves to specify the quality or general type required.

Machines or equipment must comply with current state and federal regulations.

All materials and auxiliary equipment shall conform to the size, quality, and quantity shown in the specifications. They shall be from new stock, delivered in good condition. No damaged items will be accepted.

City reserves the right to reject any or all bids and to waive informalities and minor irregularities.

The City reserves the right to determine which is the best bid considering price, quality, warranty, and delivery within specified time limit, as well as any other criteria set forth in the bid.

Delivery time being of essence in the award of this purchase, all bids must specify delivery date on which the item(s) will be delivered. Supplier shall supply the goods and or perform the services, with the schedule and term, as specified herein. Time is of the essence. All items shall be delivered "free on board (F.O.B.) destination" to the location specified herein, full freight pre-paid except for special or expedited orders, which shall be agreed upon prior to shipment.

Successful bidder shall furnish the City's purchasing supervisor with all technical information on items listed in the specifications of the bid.

Price bid shall be the maximum prices paid by the City of Merced. Price quoted shall include taxes. The City is exempt from all Federal Excise Taxes.

Price shall include license, registration, tire, and any other relevant fees. Bidder agrees to register all vehicles with the California Department of Motor Vehicles (DMV) prior to delivery.

All invoices and correspondence shall show the number of the contract or purchase order issued to the bidder awarded.

If Bidder submits a bid for alternate items, Bidder shall fill out additional bid sheets, fully explaining the differences and any perceived advantages of said items.

Bidder's security in the form of a bid bond, certified or cashier's check issued by a responsible bank or banker of the State of California in the amount of 10% of the total net amount of the bid, and payable to the City of Merced must be attached to the bid proposal, only when required. Bidders shall be entitled to return of bid security; however, a successful bidder shall forfeit his bid security upon refusal or failure to execute the contract within ten (10) calendar days after the notice of award of contract, unless the City is responsible for the delay. City Council, on refusal or failure of the successful bidder to execute the contract, may award it to the next lowest responsible bidder, the amount of the lowest bidder's security shall be applied to the contract price differential between the lowest bid and the second lowest bid. Surplus, if any, shall be returned to the lowest bidder.

Conflict of Interest: Bidder certifies that no City officer, employee or authorized representative has any financial interest in the business of the bidder and that no person associated with the bidder has any interest, direct or indirect, which could conflict with this bid. The bidder is familiar with the provisions of California Government Code section 87100, *et seq.*, and certifies that it does not know of any facts which would violate these laws. Bidder will promptly advise City if a conflict arises.



Cat® 255

COMPACT TRACK LOADER

FEATURES:

The Cat® 255 Compact Track Loader, with its vertical lift design, delivers extended reach and lift height for quick and easy truck loading. Its standard torsion suspension undercarriage system provides superior traction, flotation, stability, and speed to work in a wide range of applications and underfoot conditions. The 255 features the following:

- **Redesigned Operator Station** delivers a larger operating environment, and combined with additional seat travel, the 255 provides more space for operators of any size. The optional **one-piece, sealed, and pressurized cab** offers a clean and quiet workspace with excellent air distribution through optimally placed vents throughout the cab.
- **Available ventilated and heated high-back air ride seat** with seat-mounted adjustable joystick controls deliver industry-leading operator comfort.
- **High-performance power train** provides selectable settings for drive power priority and maximum travel speed (overdrive) to customize the machine performance to match the task.
- **Three levels of auxiliary hydraulic performance available** Standard Flow, High Flow, and High Flow XPS. **Standard flow** for attachments that require a base level of auxiliary flow and horsepower, **High Flow** boosts the auxiliary flow for applications that demand additional hydraulic flow for increased attachment performance, and the **High Flow XPS** hydraulic system provides maximum auxiliary hydraulic performance by delivering additional flow and additional pressure for the most demanding attachments and applications.
- **Electronically controlled Cat C2.8T engine** meets U.S. EPA Tier 4 Final and EU Stage V emission standards while delivering maximum horsepower across a wide RPM range and providing high torque for increased working performance, no matter the application.
- **Standard torsion suspension undercarriage and standard two-speed travel**, combined with the optional Speed Sensitive Ride Control system improves operation on rough terrain, enabling better load retention, increased productivity, and greater operator comfort.
- **Maximize machine capability and control with the Advanced Joysticks and Advanced Touchscreen Monitor.** The **20.3 cm (8-inch) Advanced Touchscreen Monitor** offers cutting-edge functionality and control that includes an integrated radio, Bluetooth® connectivity, and multi-camera (side-view) option, and supports 32 different language choices. The **Advanced Joysticks** provide unmatched control of machine functions and adjustments within the display without the operator having to remove his hands from the controls. This includes on-joystick navigation of the Advanced Touchscreen Monitor, radio volume up/down/mute, creep activation, creep on/off, creep speed increment/decrement, one-button Smart Attachment control activation, and additional auxiliary control buttons that deliver single-button control of complex attachment functions.
- **Ground-level access** to all daily service and routine maintenance points help reduce machine downtime for greater productivity.
- **Broad range of performance-matched Cat Attachments** make the Cat Compact Track Loaders the most versatile machine on the job site.

Specifications

Engine

Engine Model	Cat® C2.8T (turbo)	
Gross Power SAE J1995	55.4 kW	74.3 hp
Net Power SAE 1349	54.8 kW	73.5 hp
Net Power ISO 9249	54.4 kW	73 hp
Peak Torque at 1,600 rpm SAE J1995	300 N-m	221 lbf-ft
Displacement	2.8 L	171 in³
Stroke	90 mm	3.5 in
Bore	110 mm	4.3 in

Weights*

Operating Weight	4345 kg	9,578 lb
Tip Load	3238 kg	7,140 lb
Rated Operating Capacity (ROC) (35%)	1133 kg	2,499 lb
ROC (50%)	1619 kg	3,570 lb
Enclosed Cab Adds to Operating Weight	+82 kg	+180 lb
Tip Load	+49 kg	+108 lb
ROC (35%)	+17 kg	+38 lb

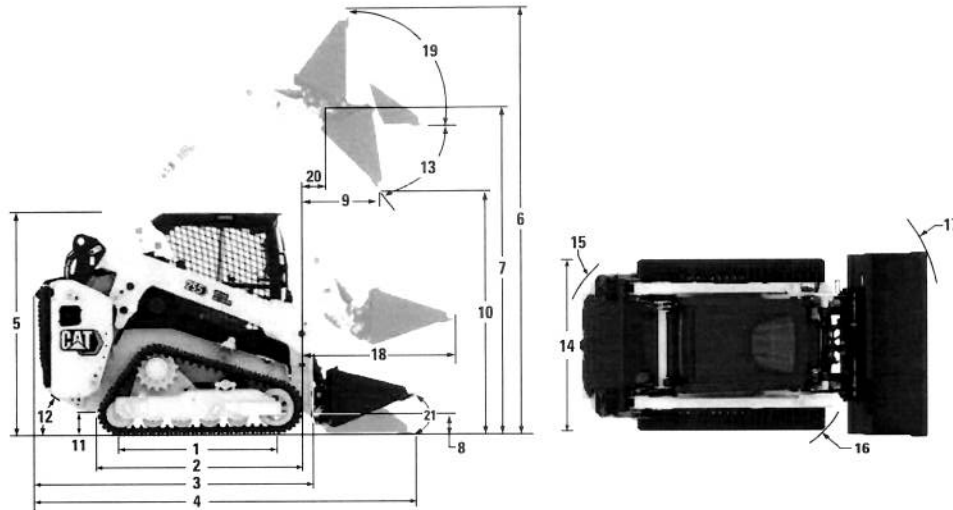
Weights* (continued)

Counterweight Adds to Operating Weight	+125 kg	+276 lb
Tip Load	+172 kg	+379 lb
ROC (35%)	+60 kg	+132 lb
Wide Track (400 mm/15.7 in) Adds to		
Operating Weight	+54 kg	+119 lb
Tip Load	+36 kg	+79 lb
ROC (35%)	+13 kg	+28 lb

*Operating Weight, Operating Specifications, and Dimensions are all based on 1730 mm (68") Low Profile Bucket with bolt-on cutting edge, 320 mm (12.6") narrow track, 75 kg (165 lb) operator, open canopy, mechanical suspension seat, HD battery with disconnect, standard flow hydraulics, manual coupler, and full fluids. No external counterweights, and no dual self-level/return-to-dig/work tool positioner.

CAT®

255 Compact Track Loader



Dimensions*

1 Length of Track on Ground	1485 mm	58.5 in	12 Departure Angle	30.6°
2 Overall Length of Track	1948 mm	76.7 in	13 Maximum Dump Angle	46.3°
3 Length without Bucket	2800 mm	110.2 in	14 Vehicle Width (320 mm/12.6 in tracks)	1675 mm 65.9 in
4 Length with Bucket on Ground	3430 mm	135 in	Vehicle Width (400 mm/15.7 in tracks)	1760 mm 69.3 in
5 Height to Top of Cab	2115 mm	83.3 in	15 Turning Radius from Center – Machine Rear	1656 mm 65.2 in
6 Maximum Overall Height	3941 mm	155.2 in	16 Turning Radius from Center – Coupler	1377 mm 54.2 in
7 Bucket Pin Height at Maximum Lift	3150 mm	124.0 in	17 Turning Radius from Center – Bucket (racked)	2105 mm 82.9 in
8 Bucket Pin Height at Carry Position	195 mm	7.7 in	18 Maximum Reach with Arms Parallel to Ground	1162 mm 45.7 in
9 Reach at Maximum Lift and Dump	540 mm	21.3 in	19 Rack Back Angle at Maximum Height	85.2°
10 Clearance at Maximum Lift and Dump	2424 mm	95.4 in	20 Bucket Pin Reach at Maximum Lift	151 mm 5.9 in
11 Ground Clearance	212 mm	8.3 in	21 Bucket rollback angle (ground level)	27°

Power Train

Travel Speed (Forward or Reverse)		
One Speed	9.2 km/h	5.7 mph
Two Speed	14.7 km/h	9.1 mph

Hydraulic System

Hydraulic Flow – Standard:		
Loader Hydraulic Pressure	24 130 kPa	3,500 psi
Loader Hydraulic Flow	86 L/min	23 gal/min
Hydraulic Power (calculated)	34.6 kW	46.4 hp
Hydraulic Flow – High Flow:		
Loader Hydraulic Pressure	24 130 kPa	3,500 psi
Loader Hydraulic Flow	113 L/min	30 gal/min
Hydraulic Power (calculated)	45.4 kW	60.9 hp
Hydraulic Flow – High Flow XPS:		
Loader Hydraulic Pressure	28 000 kPa	4,061 psi
Loader Hydraulic Flow	113 L/min	30 gal/min
Hydraulic Power (calculated)	52.7 kW	70.7 hp

Operating Specifications*

Rated Operating Capacity:		
35% Tipping Load	1133 kg	2,499 lb
50% Tipping Load	1619 kg	3,570 lb
Rated Operating Capacity with Optional Counterweight (at 35%)		
Tipping Load	3238 kg	7,140 lb
Breakout Force, Tilt Cylinder	3060 kg	6,746 lb
Breakout Force, Lift Cylinder	2674 kg	5,895 lb
Ground Contact Area (320 mm/12.6 in track)	1.02 m ²	1,582 in ²
Ground Contact Area (400 mm/15.7 in track)	1.28 m ²	1,977 in ²
Ground Pressure (320 mm/12.6 in track)	41.8 kPa	6.1 psi
Ground Pressure (400 mm/15.7 in track)	34.0 kPa	4.9 psi

Cab

Rollover Protective Structure (ROPS)	ISO 3471:2008
Falling Object Protective Structure (FOPS)	ISO 3449:2005 Level I

Service Refill Capacities

Cooling System	11.5 L	3.0 gal
Engine Crankcase	8.2 L	2.2 gal
Fuel Tank	95 L	25.1 gal
Hydraulic System	36.8 L	9.7 gal
Hydraulic Tank	26 L	6.9 gal

255 Environmental Declaration

The following information applies to the machine at the time of final manufacture as configured for sale in the regions covered in this document. The content of this declaration is valid as of the date issued; however, content related to machine features and specifications are subject to change without notice. For additional information, please see the machine's Operation and Maintenance Manual.

For more information on sustainability in action and our progress, please visit <https://www.caterpillar.com/en/company/sustainability>.

Engine

- The Cat® C2.8T (turbo) engine meet U.S. EPA Tier 4 Final and EU Stage V emission standards.
- Cat diesel engines are required to use ULSD (ultra-low sulfur diesel fuel with 15 ppm of sulfur or less) or ULSD blended with the following lower-carbon intensity fuels up to:
 - ✓ 20% biodiesel FAME (fatty acid methyl ester)
 - ✓ 100% renewable diesel, HVO (hydrotreated vegetable oil) and GTL (gas-to-liquid) fuelsRefer to guidelines for successful application. Please consult your Cat dealer or "Caterpillar Machine Fluids Recommendations" (SEBU6250) for details.

Air Conditioning System

- The air conditioning system on this machine contains the fluorinated greenhouse gas refrigerant R134a (Global Warming Potential = 1430). The system contains 0.85 kg of refrigerant which has a CO₂ equivalent of 1.216 metric tonnes.

Paint

- Based on best available knowledge, the maximum allowable concentration, measured in parts per million (PPM), of the following heavy metals in paint are:
 - Barium < 0.01%
 - Cadmium < 0.01%
 - Chromium < 0.01%
 - Lead < 0.01%

Sound Performance

Inside Cab* – 80 dB(A)

Outside Cab** – 103 dB(A)

- Cab and ROPS are standard in North America and Europe.
 - *The declared dynamic operator sound pressure levels per ISO 6395:2008. The measurements were conducted with the cab doors and windows closed and at 70% of the maximum engine cooling fan speed. The sound level may vary at different engine cooling fan speeds.
 - **The labeled sound power level for the CE marked configurations when measured according to the test procedure and conditions specified in 2000/14/EC.

Oils and Fluids

- Caterpillar factory fills with ethylene glycol coolants. Cat Diesel Engine Antifreeze/Coolant (DEAC) and Cat Extended Life Coolant (ELC) can be recycled. Consult your Cat dealer for more information.
- Cat Bio HYDO™ Advanced is an EU Ecolabel approved biodegradable hydraulic oil.
- Additional fluids are likely to be present, please consult the Operations and Maintenance Manual or the Application and Installation guide for complete fluid recommendations and maintenance intervals.

Features and Technology

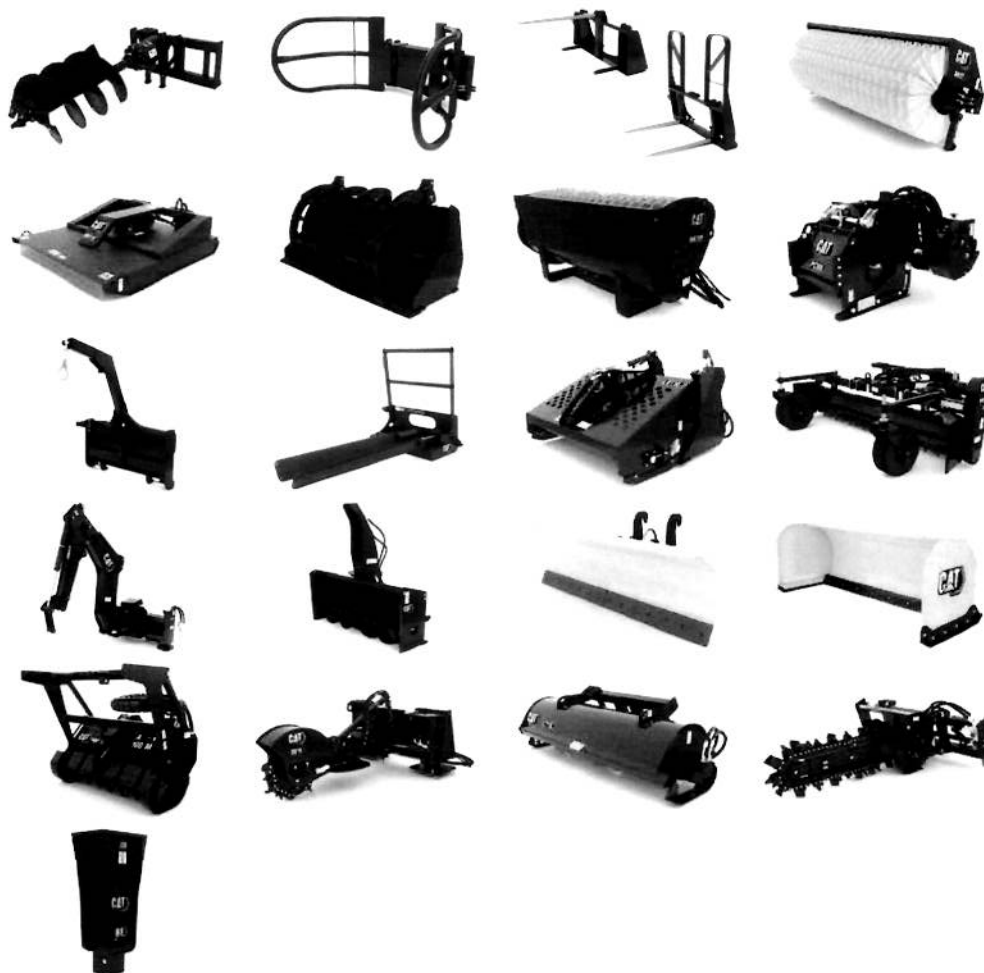
- The following features and technology may contribute to fuel savings and/or carbon reduction. Features may vary. Consult your Cat dealer for details.
 - Extended life coolant and long life hydraulic fluid extend maintenance intervals to reduce fluid consumption
 - Boost productivity with Cat technologies like work tool positioner, return to dig and Cat Smart Attachments
 - Save fuel with efficiency features such as foot throttle pedal and cooling system demand fan
 - Remote machine monitoring through onboard Product Link telematics

255 Compact Track Loader

ATTACHMENTS

Get more from your machine with Cat attachments. Choose from a wide variety of options and tailor your machine to different tasks and conditions.

Augers
Backhoes
Bale Grabs
Bale Spears
Blades, Grader, Box, Angle and Dozer
Brooms, Angle, Pickup and Utility
Brushcutters
Buckets
Cold Planers
Compactors
Fork Tines and Carriages
Hammers
Material Handling Arm
Mulchers
Nursery Forks
Rakes, Grapple, Landscape
and Power Box
Shears
Snow Blowers
Snow Plows
Snow Pushes
Snow Wings
Stump Grinders
Tillers
Trenchers
Wheel Saws
Smart Backhoe
Smart Dozer Blade with Assist
Smart Grader Blade with Assist



MANDATORY EQUIPMENT

- Quick Coupler: Manual or Hydraulic
- High Visibility Seat Belt: 50 mm (2 in), 75 mm (3 in), or 3-point lap/shoulder
- Steel Imbed Rubber Track – 320 mm (12.6 in) bar tread, 400 mm (15.7 in) block tread, 400 mm (15.7 in) bar tread
- Dual Flange Front Idler/Single Flange Rear Idler or Triple Flange Front/Rear Idlers

PERFORMANCE PACKAGES

- Performance Package HP1: *Standard Flow Hydraulics*
- Performance Package HP3: *High Flow XPS Hydraulics*

COMFORT PACKAGES

- Open canopy: *Cup Holder, Cell Phone Pocket, choice of vinyl Seat (Mechanical Suspension, High Back/Heated/Air Ride Seat)*
- Enclosed Cab with heat and air conditioning: *Side Windows, Cup Holder, Cell Phone Pocket, choice of Seat (Mechanical Suspension, High Back/Heated Air Ride Seat, High Back/Ventilated and Heated Air Ride Seat) and Door choice (Glass or Polycarbonate)*

TECHNOLOGY PACKAGES

- T2 – *Standard Display, Standard Joysticks, traditional Key Start switch, and Rear-view camera.*
- T4 – *Advanced Touchscreen Monitor, Advanced Joysticks, Push start, X-mount cell phone holder, and a Rear-view camera.*
- T5 – *T4 + 2 additional side view cameras.*

RADIO

- Radio, *none* – *for open canopy machines and countries not certified for Bluetooth® technology*
- Integrated AM/FM radio with Bluetooth technology. *Includes USB port, 3.5 mm (0.13 in) AUX input, and BT microphone. Only for use with enclosed cab. Availability varies by country.*
- Integrated DAB+/AM/FM radio with Bluetooth technology. *Includes USB port, 3.5 mm (0.13 in) AUX input, and BT microphone. Only for use with enclosed cab. Availability varies by country.*

PRODUCT LINK™

- Product Link™ Basic series PL243
- Product Link Elite series PLE643

COOLING FAN

- On-demand, variable speed hydraulic cooling fan
- On-demand, variable speed hydraulic cooling fan, with automatic and manual purge reversing operation

GUARDING AND SEALING PACKAGES

- HD0 – *base guarding and sealing (engine air inlet rain cap, front cab-to-frame sealing, and hydraulic fill access door)*
- HD1 – *intermediate guarding and sealing† (HD0 + cab-to-frame side sealing, lockable fuel fill access door, tilt cylinder guarding, and drive line bottom guarding.)*
- HD2 – *most comprehensive guarding and sealing† (HD1 + turbo guard, exhaust stack wrap, DPF wrap, quick disconnect guarding, fully enclosed drive line guarding, under step hydraulic lines guard cover, engine air inlet pre-cleaner.)*

†Some equipment varies by region.

255 Compact Track Loader

STANDARD EQUIPMENT

ELECTRICAL

- Work Tool Electrical Harness
- Heavy duty battery
- Battery disconnect with lockout feature
- 12-volt Electrical System
- 85 Ampere Alternator
- LED Work Lights
- Auto Reverse Lights
- Switch Backlighting
- Interior LED Dome Light
- Backup Alarm
- Electrical Outlet, Beacon
- Exterior Courtesy Lighting
- Automatic Work light notification flash when parking brake is released

OPERATOR ENVIRONMENT

- Full color LCD monitor: *Creep speed control, Drive response adjustment, Implement response adjustment, Drive Power Priority adjustment, Language selection (× 32), Multi-operator Anti-theft Security System and Monitoring, Maintenance schedule and reminders, Event and Diagnostic Code monitoring, Date /Time/ Units/Brightness settings, and Smart Technology for use with Smart Attachments.*
- Operator Warning System Indicators: *Air Filter Restriction, Alternator Output, Armrest Raised/Operator Out of Seat, Engine Coolant Temperature, Engine Oil Pressure, Glow Plug Activation, Hydraulic Supply Filter Restriction, Hydraulic Oil Temperature, Park Brake Engaged, Engine Emission System (where applicable)*
- Gauges: *Fuel Level, Hour Meter, Hydraulic Temperature, Hour Meter, Battery Voltage, Tachometer*
- Fold In Ergonomic Contoured Armrest
- Control Interlock System, when operator leaves seat or armrest raised: *Hydraulic System Disables, Hydrostatic Transmission Disables, Parking Brake Engages*
- ROPS Cab, Tilt Up
- FOPS, Level I
- Top and Rear Windows
- Floor Mat
- Headliner
- Interior Rearview Mirror
- Horn
- Hand (Dial) Throttle, Electronic
- Seat Mounted Joystick Controls
- Cell Phone Storage Pocket
- Cup Holder
- 12-volt power port
- Foot Throttle

HYDRAULICS

- Selectable control pattern – ISO or H
- Electro/hydraulic implement control
- Electro/hydraulic hydrostatic transmission control
- Speed sensor guarding
- Heavy duty flat faced quick disconnects with integrated pressure release lever
- Hydraulic oil level sight gauge

POWER TRAIN

- Cat C2.8T turbocharged diesel engine, meeting Tier 4 Final and Stage V Emission Standards:
 - Glow plugs starting aid
 - Liquid cooled, direct injection
- Extended life antifreeze (–37° C, –34° F)
- Air cleaner, dual element, radial seal
- Scheduled Oil Sampling (S-O-SSM) Valve, Hydraulic Oil
- Ecology drain – coolant
- Radiator coolant level sight gauge
- Radiator expansion bottle
- Filter, hydraulic supply, cartridge type
- Filter, hydraulic return, cartridge type
- Filter, canister type, engine oil
- Filter, canister type, fuel and water separator
- Radiator/hydraulic oil
- Cooler (side-by-side)
- Spring applied, hydraulically released, parking brakes
- Hydrostatic transmission
- Lockable fuel cap
- Hydraulic demand cooling fan
- Auto engine idle

UNDERCARRIAGE

- Torsion Suspension (4 independent torsion axles)
- Two speed travel
- Integrated tie downs on track frame (4)

FRAME

- Machine tie down points (9)
- Removable panels for machine frame cleanout
- Support, lift arm
- Steel rear and front bumpers, welded
- Fuel fill, machine right hand side

OTHER

- Auxiliary Hydraulics, Continuous Flow
- Telematics, Product Link, Cellular
- Steel engine door with replaceable louvers
- Engine door – lockable
- Work tool attachment coupler
- Cat ToughGuardTM hose

OPTIONAL EQUIPMENT

- External Counterweights
- Beacon, LED
- Engine Block Heater – 120V
- Oil, Hydraulic, Cold Operation
- 4-point machine lifting eyes
- Paint, Custom
- Speed Sensitive Ride Control
- Bluetooth Key Security
- Attachment Hose Guide
- Corrosion Inhibitor Coating

PICKUP BROOMS

Cat® Pickup Brooms sweep and deposit material into an integrated hopper bucket for easy removal and dumping. Bi-directional capabilities of the bristles allow pickup brooms to sweep in forward or reverse machine travel. Optimum sweeping style is in forward travel, resulting in over-the-brush pickup. Certain conditions require a dust pan style of sweeping, done in reverse travel. BP115C and BP118C models are for use on skid steer loaders, compact tracker loaders and compact wheel loaders. The BP22 and BP25 are for used backhoe loaders, compact wheel loader and small wheel loaders.

FEATURES – BP115C, BP118C PICKUP BROOMS



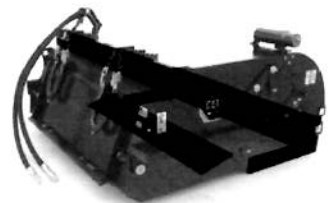
LARGE HOPPER CAPACITY

Large hopper capacity allows greater productivity with longer sweeping cycles. Wide bucket opening permits fast, efficient dumping.



ADJUSTABLE VOLUMIZER

Adjustable volumizer allows more material retention in hopper, giving operator more sweeps before stopping to empty material.



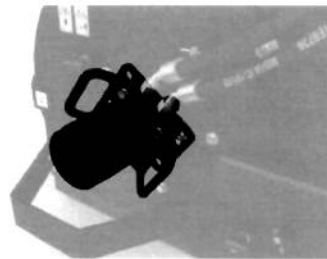
INTERIOR DEFLECTORS

Interior deflectors, rear bucket seal, and side brush stripping direct dirt and dust into the bucket, reducing spillage and air-borne contaminants.



BRISTLE HEIGHT ADJUSTMENT

Bristle height adjustments have been simplified with the use of handle and a tool-less locking feature.



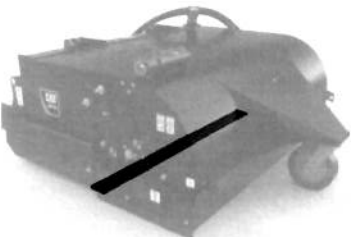
MOTOR SERVICABILITY

Motor serviceability is enhanced with a handle shaped motor bracket, core connection is close to broom wall and single retention pins allow for quick brush change and less downtime.



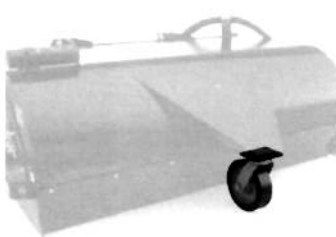
DUAL CHAIN AND LOADER ARM BRACKET SYSTEM

Dual chain and loader arm bracket system holds broom housing horizontally when emptying the hopper.



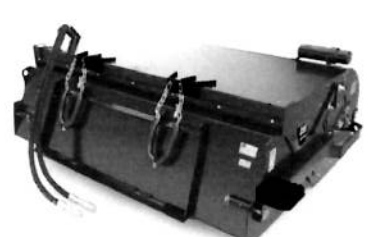
REPLACEABLE BOLT-ON CUTTING EDGES

Replaceable bolt-on cutting edges increase wear life of hopper bucket.



GUIDE WHEEL

Heavy-duty low profile pneumatic guide wheel supports the hood during sweeping.



SERRATED STEPS

Serrated steps help the operator safely enter and exit the cab.

FEATURES – BP115C, BP118C PICKUP BROOMS *(continued)*



OPTIONAL DUST CONTROL

An optional water sprinkler kit is available which helps reduce the amount of airborne dust during sweeping operations.



OPTIONAL GUTTER BRUSH

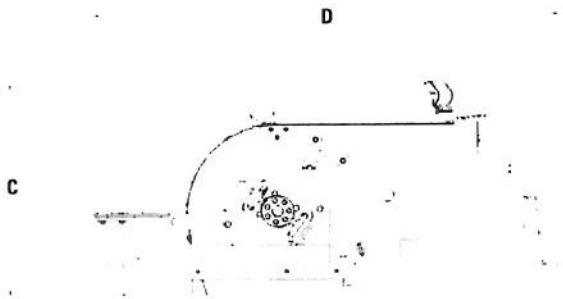
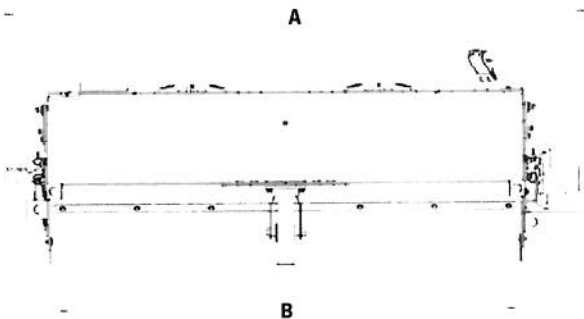
Optional gutter brush mounted on the left or right side of the broom assists in removing material from gutters and pavement edges.



TOOL MOUNTED OMM

Tool mounted and sealed from the elements, this holder includes all of the operation maintenance manuals (OMM) and guides required for proper operation of the work tool.

DIMENSIONS – BP115C, BP118C PICKUP BROOMS



PICKUP BROOMS		
MODEL		
A Overall Width – mm (in)	BP115C 1990 (78.3)	BP118C 2295 (90.4)
B Sweeping Width – mm (in)	1524 (60)	1829 (72)
C Overall Height – mm (in)		872 (34.3)
D Overall Length – mm (in)		1837 (72.3)
Hopper Capacity – m ³ (yd ³)	0.41 (0.54)	0.49 (0.60)
Weight – kg (lb)	526 (1160)	570 (1257)
Brush Diameter – mm (in)		660 (26)
Brush Speed at Maximum Flow – rpm		199
Optimal Hydraulic Flow – L/min (gpm)		42-86 (11-23)
Optimal Hydraulic Pressure – bar (psi)		145-235 (2100-3400)
Required Hydraulics		Standard Flow
Compatibility	CWL – 903D-908 SSL/CTL – 226B3-299D3	CWL – 903D-908 SSL/CTL – 226B3-299D3

CWL = compact wheel loader
SSL/CTL = skid steer loader/compact track loader