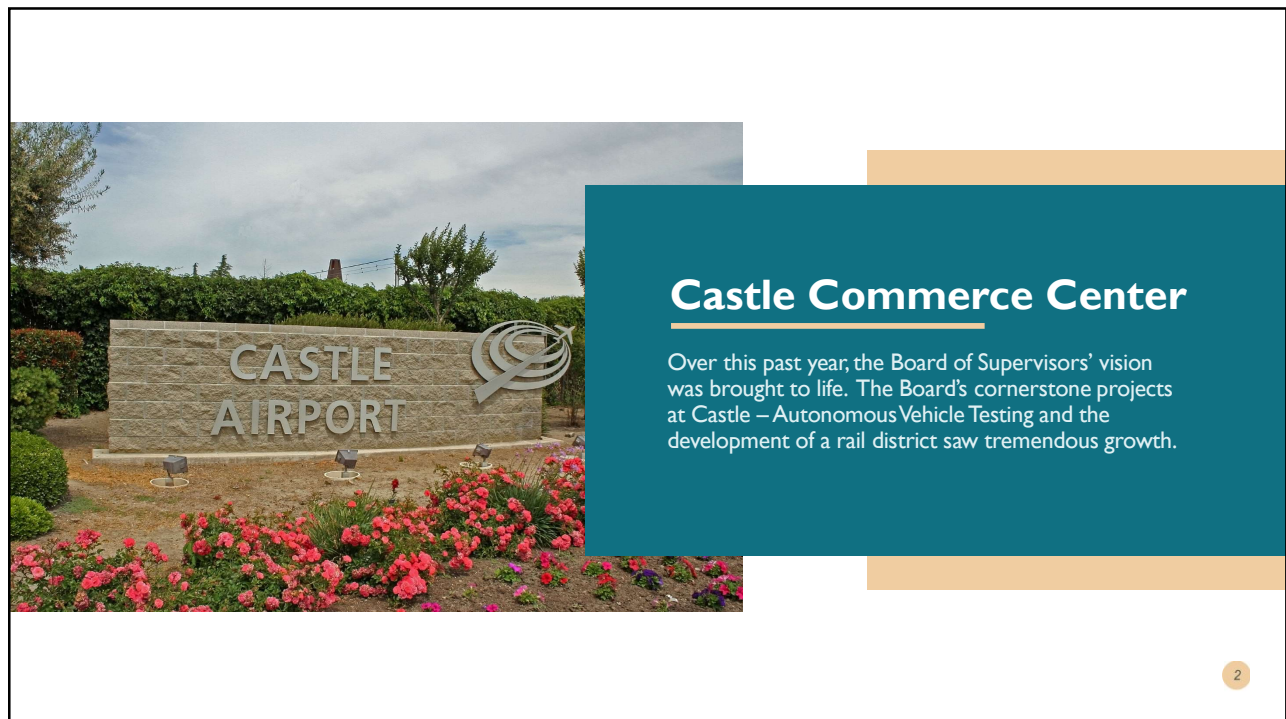




1



2

2

Castle Rail Timeline

Privatizations, logistics,
and advanced
technologies

2006

County assumed ownership of Castle.

2013

County advances vision for Castle Commerce Center.

2022

TRC and Patriot Rail fully operational. Rail volume has tripled since May 2022.

Jan. 2023

CalSTA PFIP grant released in November 2022. County submitted application in early 2023.

July 2023

County receives full \$49.6 million grant award.

SUCCESS

3

3

Castle Inland Port- PFIP Grant Award



Project I(a): Development of 70-acres within Castle Commerce Center to support pre-shipment processing and intermodal cross-docking. (\$30.2 million)



Project I(b): Rail expansion to a new staging and container laydown area to support air cargo, cross-docking, and processing. (\$18.3 million)



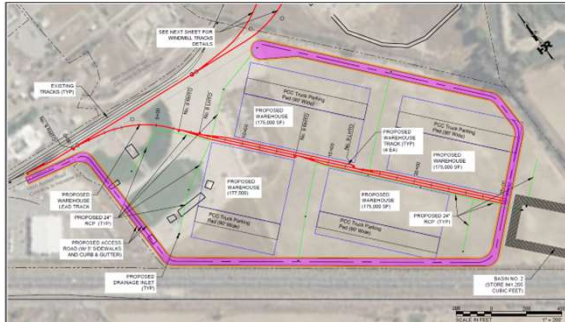
Project II: Evaluation, engineering, and planning for further expansion on existing land inside Castle Commerce Center. (\$1.1 million)

Total Award: \$49.6 million

4

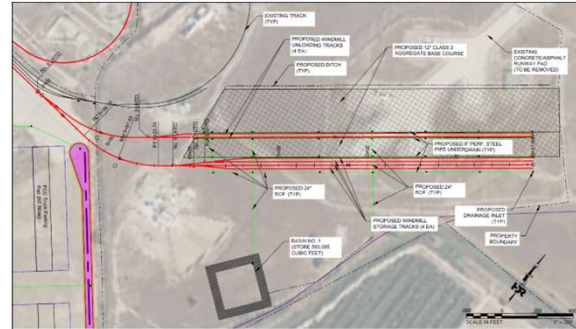
4

Castle Inland Port - Preliminary Drawings



Phase I(a)

- Expansion of all underground utilities
- Create "Shovel-Ready" site
- Expansion of rail lines
- Plans for 4 new transload buildings built by private sector



Phase I(b)

- Expansion of 13,551 feet of new track
- Connects Air Cargo and CA Ports
- Multimodal connection

5

5

Regional Benefit

- ✓ Project spurs local and regional job creation – anticipated to be in the hundreds of jobs.
- ✓ Project takes trucks off our state's highways, and places freight on rail instead.
- ✓ Project enhances regional air quality by reducing emissions significantly.
- ✓ Project enjoys a direct relationship with the nation's busiest seaport, the Port of Los Angeles, opening up opportunities for Valley growers, manufacturers, and producers.

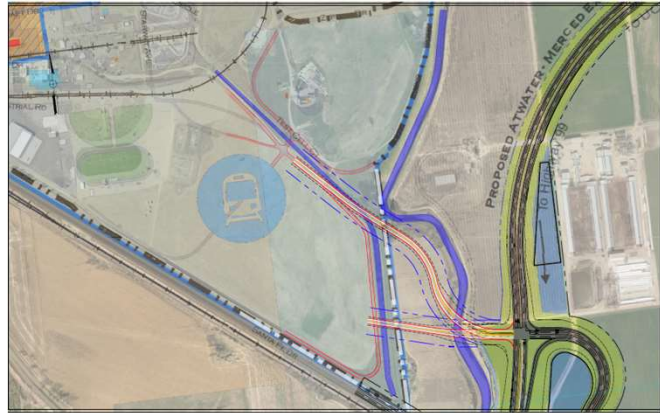


6

6

Atwater-Merced Expressway

- ✓ Connects Highway 99 to the Castle Rail District.
- ✓ Removes trucks off residential roads.
- ✓ Phase I(b) anticipated to be complete in 2028.



7

7

Next Steps



Pre-Construction Activities

This first phase will consist of the engineering, planning, and environmental work for the inland port.
August 2023



Transload Area Construction

Construction to connect the transload area to the airport which will consist of new rail lines. This will allow for air cargo to unload directly into rail cars.
November 2024



Cross Dock Area Construction

Construction on the 70-acre transmodal site which consists of underground infrastructure, asphalt, and new rail lines, creating a "shovel-ready" rail park to allow private developers to construct four transload facilities.
December 2024

Project Completion: 2028

8

8

