



City of Merced

2025 Urban Water Management Plan & 2025 Water Shortage Contingency Plan

Presented by Black Water Consulting Engineers

Presenters



Ryen Simpson, PE

BLACK  WATER
CONSULTING ENGINEERS



Bao Cha, EIT

BLACK  WATER
CONSULTING ENGINEERS



State Requirements

Urban Water Management Planning Act (AB 797), Water Code Section 10610 – 10657

- Requires urban water suppliers to prepare and adopt an UWMP
 - Urban Water Suppliers = agencies servicing 3,000 or more connections or supplying more than 3,000 acre-feet of water annually
- Update required every 5 years
- Required for eligibility for State grants and loans



Purpose

Evaluate future water demands, assess available supplies, prepare for drought conditions, and identify conservation and infrastructure improvements needed to maintain reliable service.



2025 UWMP Overview

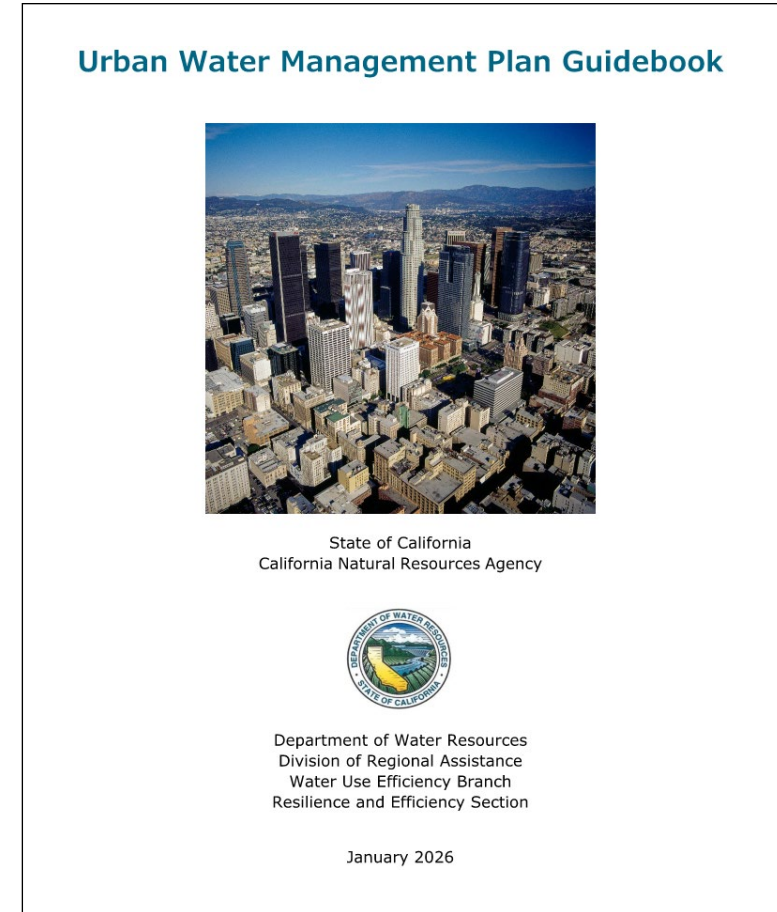
Chapter	Key Component
1	UWMP Introduction and Lay Description
2	UWMP Preparation
3	Service Area Description
4	Water Use Characterization
5	SB X7-7 Baseline, 2020 Targets, and 2025 Targeting
6	Normal-Year Water Supply Characterization
7	Water Service Reliability and Drought Risk Assessment
8	Water Shortage Contingency Plan
9	Demand Management Measures
10	UWMP Adoption, Submittal, and Implementation



Changes to UWMP Since 2020

Per Section 1.1 of the UWMP Guidebook, Finalized January 2026:

- Minor Adjustments to Water Code
- Classification for Suppliers to Multiple Public Water Systems
- UWMP Submittal Tables
- 2028 Water Loss Standard Reporting
- Lower-Income Housing Water Use Monitoring Guidance
- Groundwater Recharge and Storage Reporting Guidance



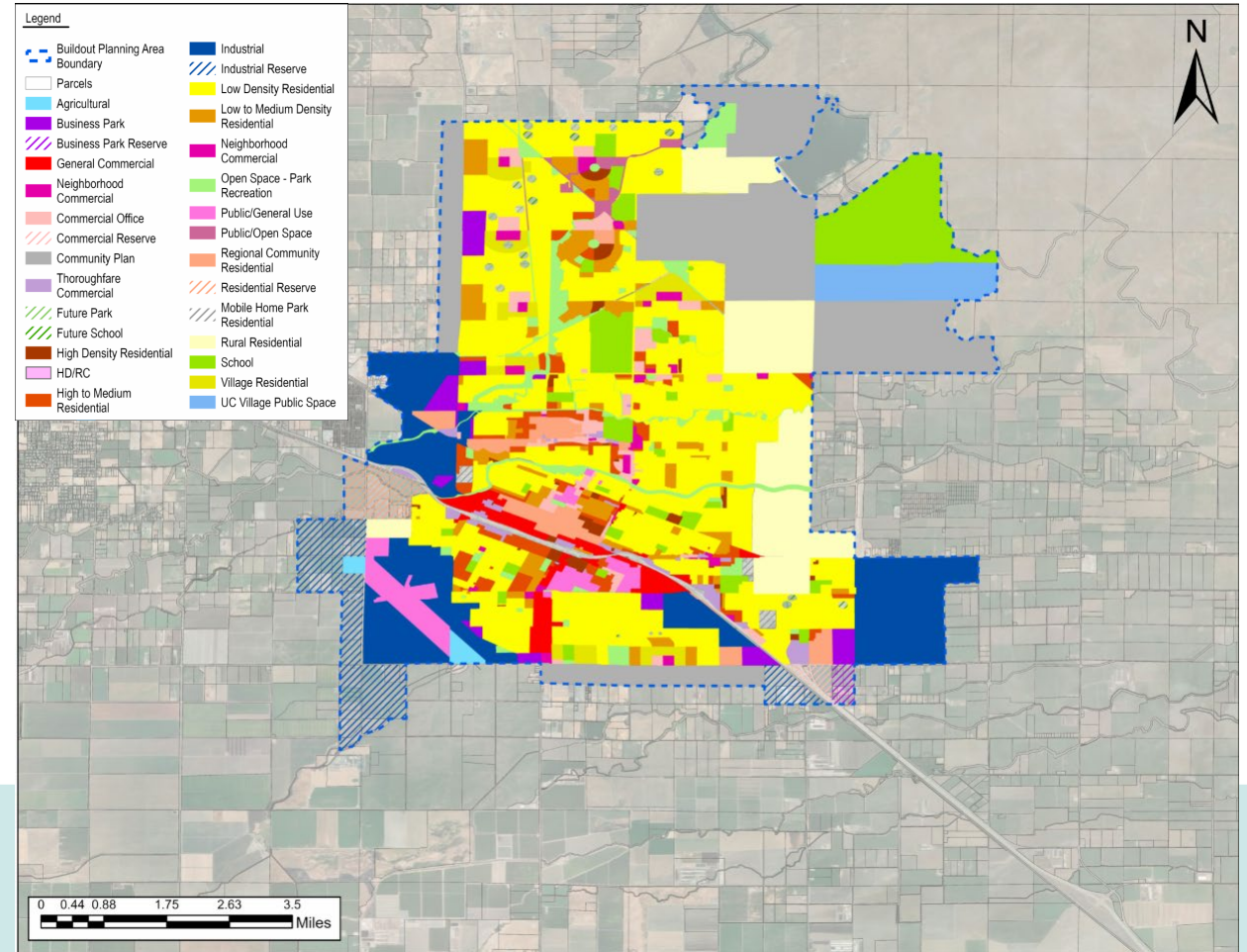
System Description

2025 Municipal Connections 2025: 24,818

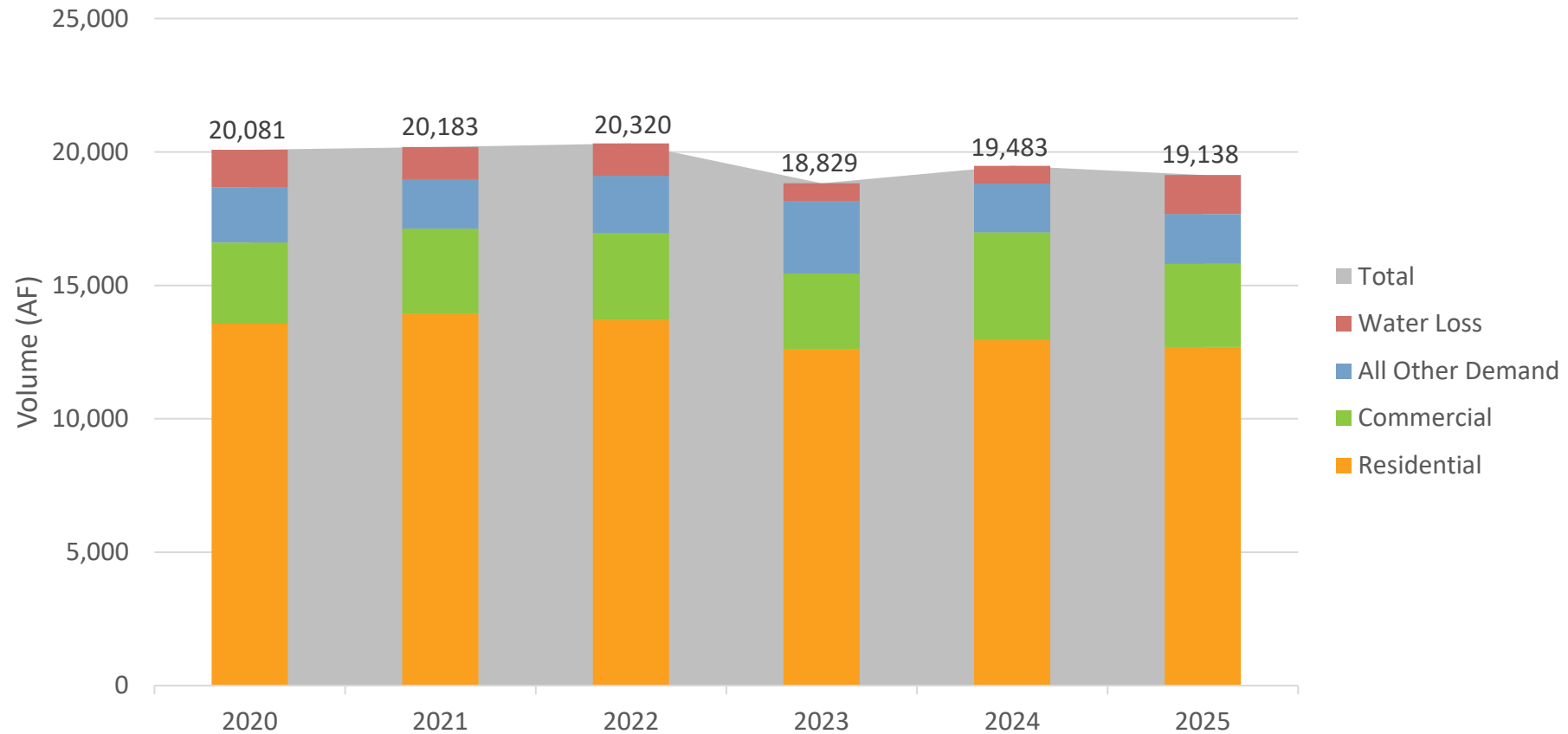
2025 Volume of Water Supplied:
19,138 Acre Feet or 6,236 Million Gallons

98,030 Residents

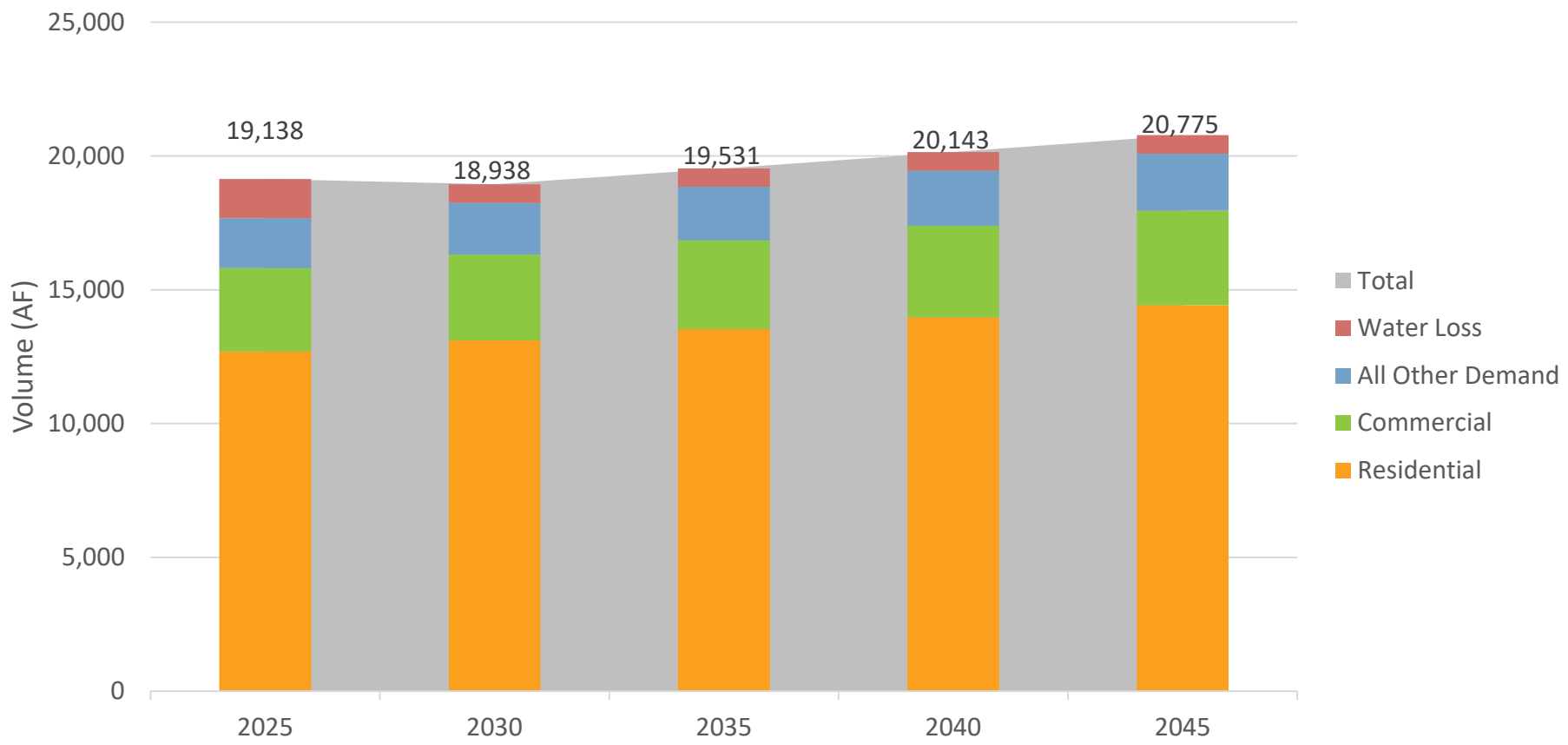
Water Use Categories include Single Family,
Multi-Family, Commercial, Industrial,
Landscape, Other, and Water Loss



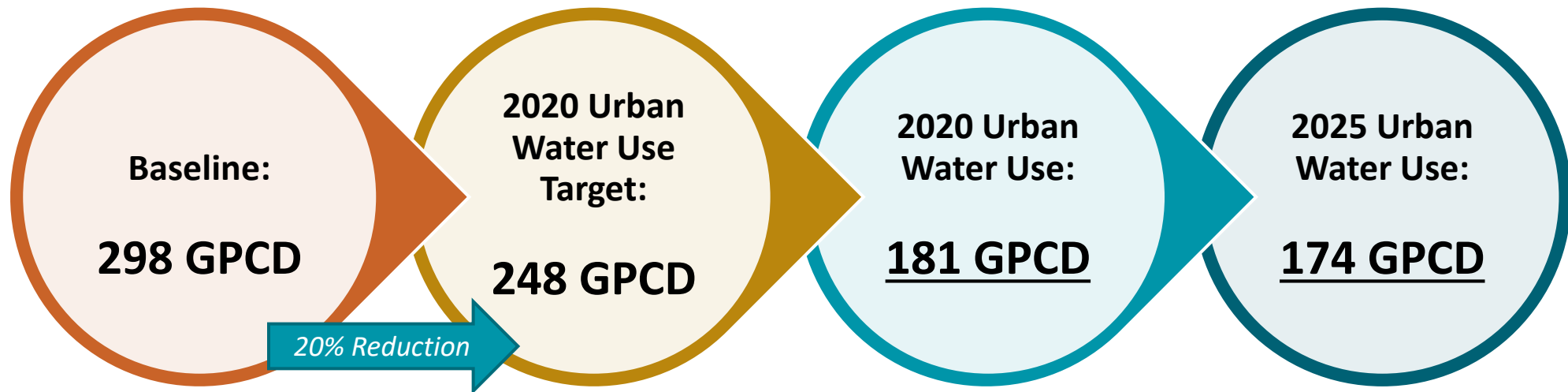
Historical & Current Water Usage



Current & Projected Water Usage



Senate Bill X7-7 Water Use Reduction Compliance



- Baseline daily per capita water use
- Average from 2001-2010

- 20% reduction from baseline daily per capita water use

Target Met!
City eligible to receive a water grant or loan from the State



2028 Real Water Loss Standard

As per Senate Bill 555, each urban retail water supplier will be required to comply, by 2028, with an individualized volumetric water loss standard for the supplier's real loss. Each supplier's standard was calculated using the economic model developed by the State Water Board and the supplier's own unique data.



Water Supply & Reliability

Existing Groundwater Supply

- 21 Active Wells
- Total Well Capacity approximately 56,900 gallons per minute (gpm)

Future Groundwater Supply

- 4 Planned Wells
- Well Capacity approximately 2,500 gpm each

Future Surface Water Supply

- Planned Construction of a Surface Water Treatment Plant
- Capable of producing 10 mgd



Water Shortage Contingency Plan

- Stand-alone document included with the UWMP
- Provides plan to identify and respond to potential water shortage
- Currently the City has enacted Water Shortage Level 2 to mitigate the total amount of water usage across the City.
- Demand Reduction Actions (DRAs) are being implemented to reach these goals as per the Water Shortage Contingency Plan and the City's Ordinance.

Water Shortage Contingency Plan Levels		
Water Shortage Level	Percent Shortage Range	Shortage Response Actions
1	Up to 10%	Prohibits outdoor water wasting activities. Commercial and industrial water conservation measures.
2	Up to 20%	Increases landscape irrigation limits.
3	Up to 30%	Increases landscape irrigation limits.
4	Up to 40%	Increases landscape irrigation limits.
5	Up to 50%	Prohibits most landscape irrigation.
6	> 50%	Prohibits all landscape irrigation.

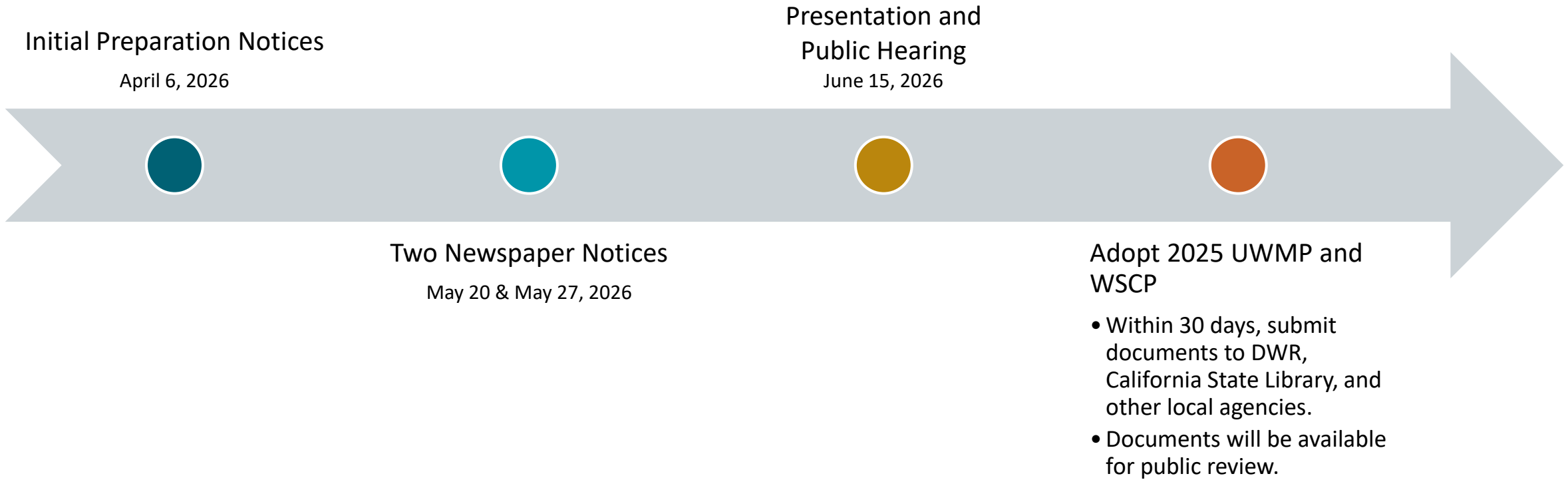


Demand Management Measures (Water Conservation)

- Water Waste Prevention Ordinances
- Water Metering
- Conservation Pricing
- Public Education and Outreach
- Water Audits
- Program Coordination and Staffing Support
- Additional DMMs
 - Residential Plumbing Retrofit
 - Washing Machine Rebate
 - Commercial, Industrial, and Institutional Conservation Programs
 - Turf Replacement Initiative



Adoption, Submittal, and Implementation Process



Questions?

THANK YOU

