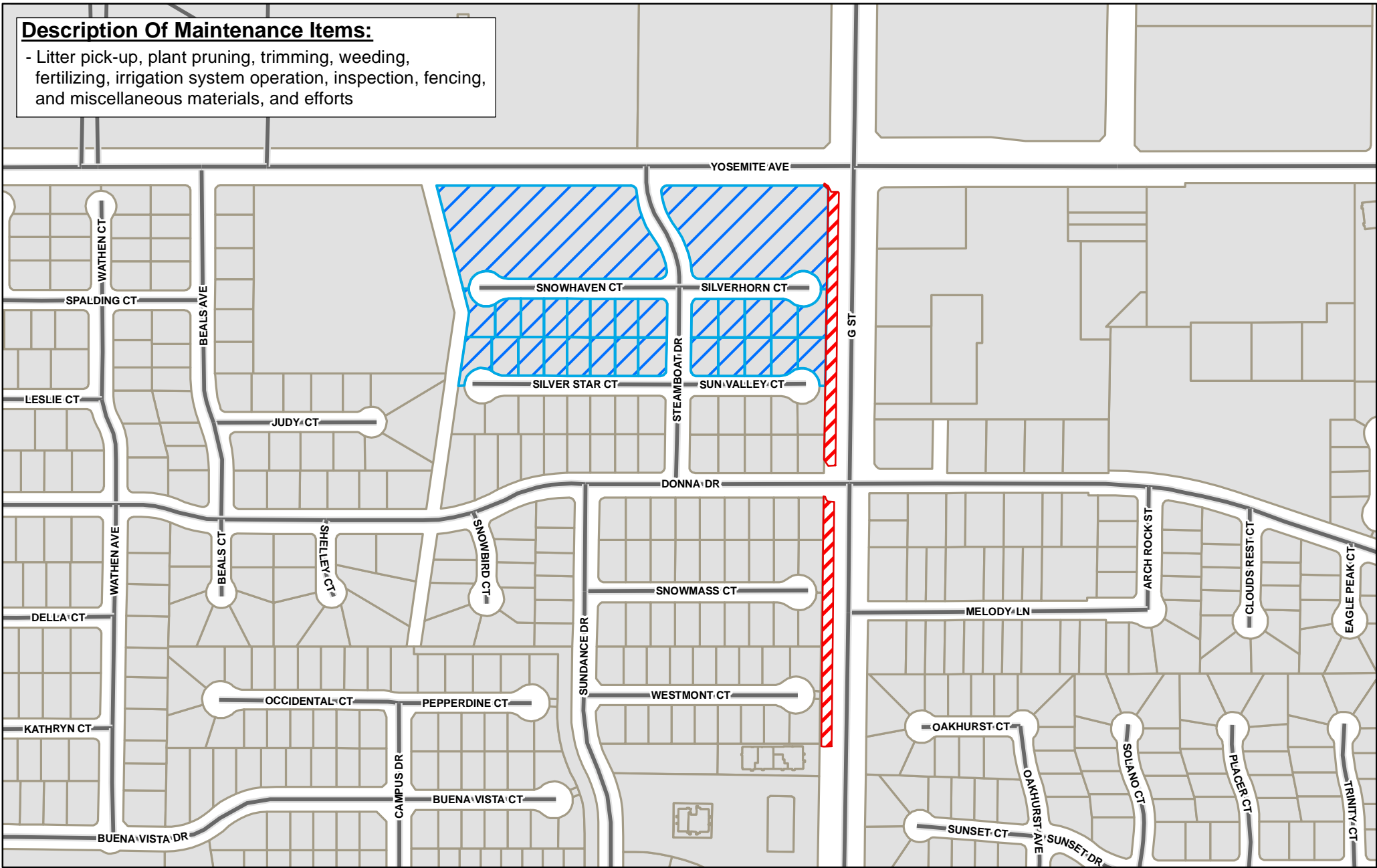


Description Of Maintenance Items:

- Litter pick-up, plant pruning, trimming, weeding, fertilizing, irrigation system operation, inspection, fencing, and miscellaneous materials, and efforts



Maintenace District - Northwood Village

Legend

- Northwood Village
- Landscape Area

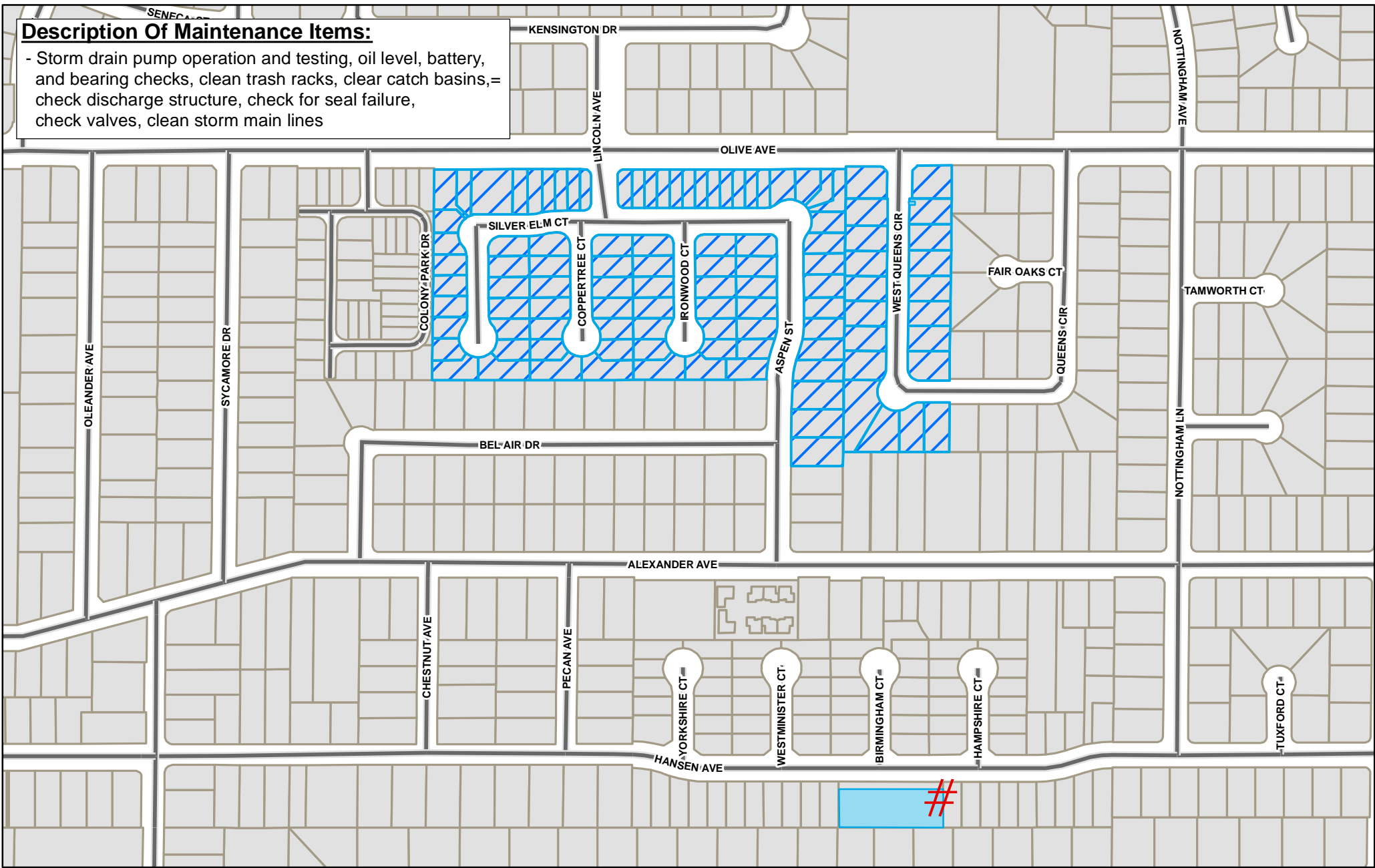


Date: 1/9/2018

Disclaimer: This document was prepared for general inquiries only. The City of Merced is not liable for errors or omissions that might occur. Official information concerning specific parcels should be obtained from recorded or adopted City documents.

Description Of Maintenance Items:

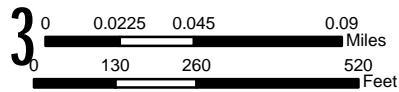
- Storm drain pump operation and testing, oil level, battery, and bearing checks, clean trash racks, clear catch basins,= check discharge structure, check for seal failure, check valves, clean storm main lines



Maintenance District - East College Homes

Legend

- East College Homes
- Pump Station
- Storm Drain Basin

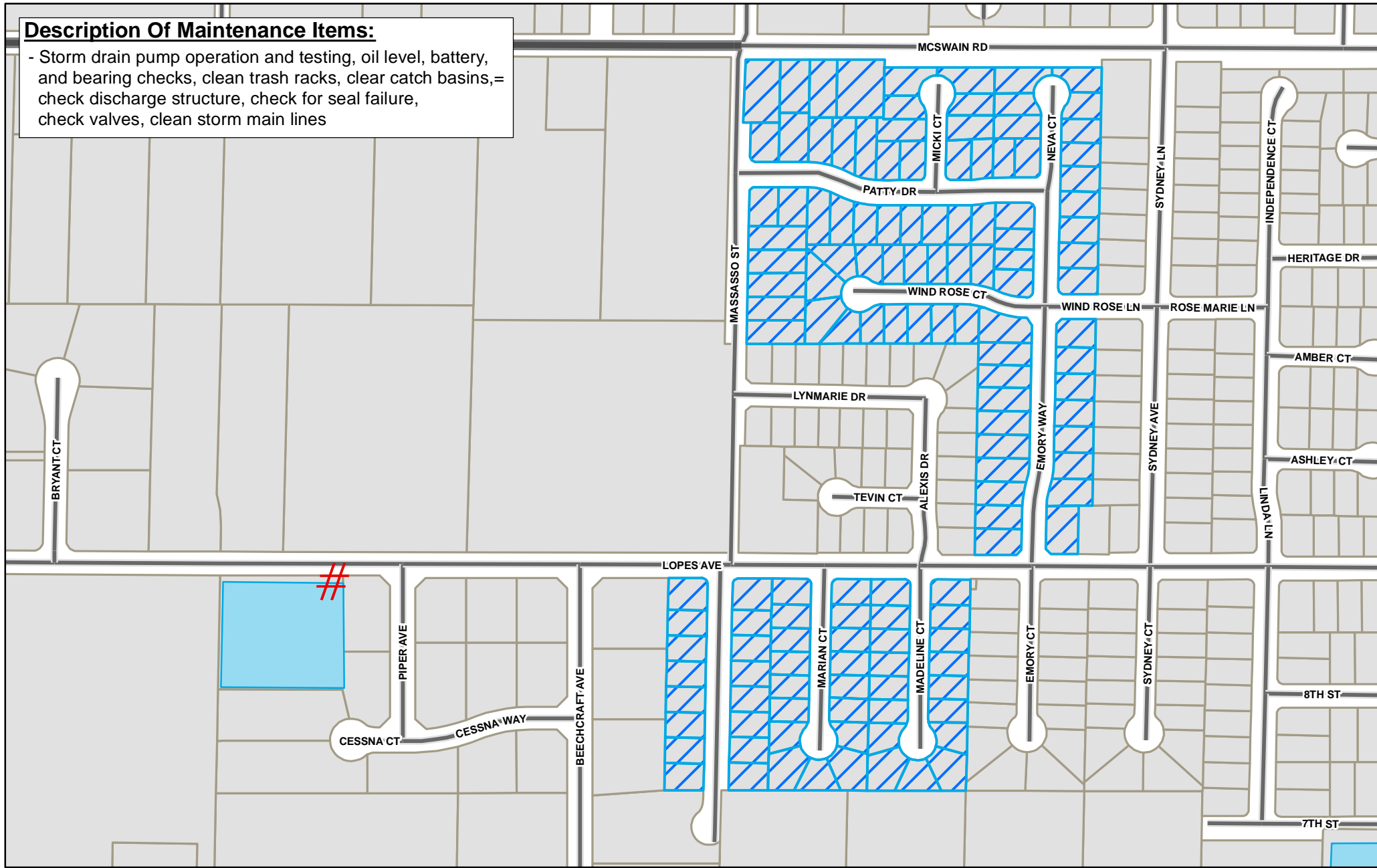


Date: 1/9/2018

Disclaimer: This document was prepared for general inquiries only. The City of Merced is not liable for errors or omissions that might occur. Official information concerning specific parcels should be obtained from recorded or adopted City documents.




Description Of Maintenance Items:

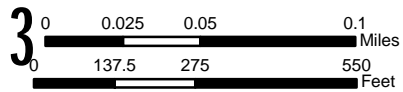
- Storm drain pump operation and testing, oil level, battery, and bearing checks, clean trash racks, clear catch basins,= check discharge structure, check for seal failure, check valves, clean storm main lines



Maintenace District - Moss Landing

Legend

-  Moss Landing
-  Pump Station
-  Storm Drain Basin

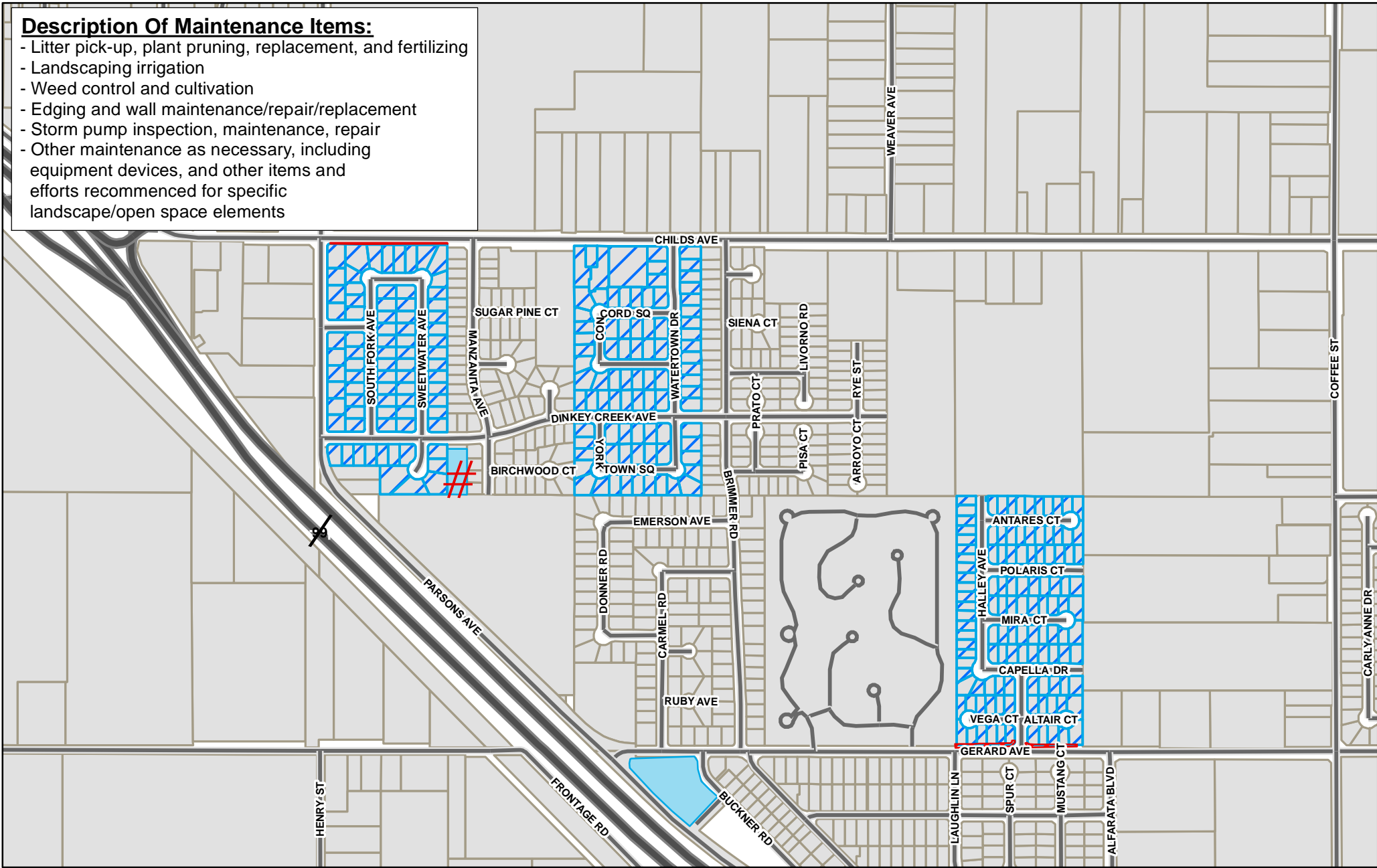


Date: 1/9/2018

Disclaimer: This document was prepared for general inquiries only. The City of Merced is not liable for errors or omissions that might occur. Official information concerning specific parcels should be obtained from recorded or adopted City documents.

Description Of Maintenance Items:

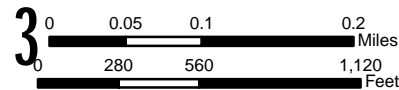
- Litter pick-up, plant pruning, replacement, and fertilizing
- Landscaping irrigation
- Weed control and cultivation
- Edging and wall maintenance/repair/replacement
- Storm pump inspection, maintenance, repair
- Other maintenance as necessary, including equipment devices, and other items and efforts recommended for specific landscape/open space elements



Maintenace District - Ridgeview Meadows

Legend

- Ridgeview Meadows
- Pump Station
- Storm Drain Basin
- Landscape Area



Date: 1/9/2018

Disclaimer: This document was prepared for general inquiries only. The City of Merced is not liable for errors or omissions that might occur. Official information concerning specific parcels should be obtained from recorded or adopted City documents.