

ATTACHMENT 4

OWNER'S STATEMENT:

WE, THE UNDERSIGNED, DO HEREBY STATE THAT WE ARE THE OWNERS OR HAVE SOME RIGHT, TITLE OR INTEREST OF RECORD IN THE LAND SHOWN ON THIS MAP AND WE CONSENT TO THE PREPARATION AND RECORDATION OF THIS MAP...

OWNER: MERCED PASEO, LLC, A CALIFORNIA LIMITED LIABILITY COMPANY

BY: Todd D. Bender 12-22-06 DATE

BY: DATE

BY: DATE

BY: DATE

BENEFICIARY: COUNTY BANK

BY: Tom Hawley 1/4/07 DATE

NOTARY STATEMENT:

STATE OF California } s.s. COUNTY OF Merced } ON 12/27/06, 2006 BEFORE ME Carmelina McKee NOTARY PUBLIC, PERSONALLY APPEARED Todd D. Bender

PERSONALLY KNOWN TO ME [] PROVED TO ME ON THE BASIS OF SATISFACTORY EVIDENCE TO BE THE PERSON(S) WHOSE NAME(S) IS/ARE SUBSCRIBED TO THE WITHIN INSTRUMENT AND ACKNOWLEDGED TO ME THAT HE/SHE/HEY EXECUTED THE SAME IN HIS/HER/THEIR AUTHORIZED CAPACITIE(S), AND THAT BY HIS/HER/THEIR SIGNATURE(S) ON THE INSTRUMENT THE PERSON(S), OR THE ENTITY UPON BEHALF OF WHICH THE PERSON(S) ACTED, EXECUTED THE INSTRUMENT.

WITNESS MY HAND Carmelina McKee PRINT NAME & TITLE Carmelina McKee, Notary MY COMMISSION EXPIRES 3/1/07 # 1404932 PRINCIPAL COUNTY OF BUSINESS Merced

NOTARY STATEMENT:

STATE OF California } s.s. COUNTY OF Merced } ON 1/04/07, 2006 BEFORE ME Jean Att NOTARY PUBLIC, PERSONALLY APPEARED Tom Crawley

PERSONALLY KNOWN TO ME [] PROVED TO ME ON THE BASIS OF SATISFACTORY EVIDENCE TO BE THE PERSON(S) WHOSE NAME(S) IS/ARE SUBSCRIBED TO THE WITHIN INSTRUMENT AND ACKNOWLEDGED TO ME THAT HE/SHE/HEY EXECUTED THE SAME IN HIS/HER/THEIR AUTHORIZED CAPACITIE(S), AND THAT BY HIS/HER/THEIR SIGNATURE(S) ON THE INSTRUMENT THE PERSON(S), OR THE ENTITY UPON BEHALF OF WHICH THE PERSON(S) ACTED, EXECUTED THE INSTRUMENT.

WITNESS MY HAND Jean Att, Notary Public PRINT NAME & TITLE Jean Att, Notary Public MY COMMISSION EXPIRES 2/10/10 # 1680676 PRINCIPAL COUNTY OF BUSINESS Merced

PASEO

BEING A PORTION OF THE SOUTHEAST QUARTER OF SECTION 31 AS SHOWN ON THE "MAP OF BELLA VISTA ESTATES UNIT NO. 1", FILED FOR RECORD ON OCTOBER 18, 1967, IN VOLUME 17 OF OFFICIAL PLATS, AT PAGES 47-49, MERCED COUNTY RECORDS, SITUATE IN TOWNSHIP 6 SOUTH, RANGE 14 EAST, MOUNT DIABLO BASE AND MERIDIAN.

CITY OF MERCED, COUNTY OF MERCED, STATE OF CALIFORNIA



1165 Scenic Drive, Suite A, Modesto, CA 95350 Ph 209.571.1765 Fax 209.571.2466 odellengineering.com

NOTARY STATEMENT:

STATE OF COUNTY OF ON , 2006 BEFORE ME, NOTARY PUBLIC, PERSONALLY APPEARED

PERSONALLY KNOWN TO ME [] PROVED TO ME ON THE BASIS OF SATISFACTORY EVIDENCE TO BE THE PERSON(S) WHOSE NAME(S) IS/ARE SUBSCRIBED TO THE WITHIN INSTRUMENT AND ACKNOWLEDGED TO ME THAT HE/SHE/HEY EXECUTED THE SAME IN HIS/HER/THEIR AUTHORIZED CAPACITIE(S), AND THAT BY HIS/HER/THEIR SIGNATURE(S) ON THE INSTRUMENT THE PERSON(S), OR THE ENTITY UPON BEHALF OF WHICH THE PERSON(S) ACTED, EXECUTED THE INSTRUMENT.

WITNESS MY HAND PRINT NAME & TITLE MY COMMISSION EXPIRES PRINCIPAL COUNTY OF BUSINESS

OMITTED SIGNATURES:

PURSUANT TO SECTION 66436 OF THE SUBDIVISION MAP ACT THE SIGNATURES OF THE FOLLOWING INTEREST HOLDERS OF RECORD HAVE BEEN OMITTED:

- 1. EASEMENT FOR THE PURPOSE OF RIGHT OF WAY FOR DITCHES AND CANALS AND INCIDENTALS, GRANTED TO MERCED IRRIGATION COMPANY, BY DOCUMENT RECORDED FEBRUARY 1, 1922 IN BOOK 12 OF OFFICIAL RECORDS AT PAGE 1, MERCED COUNTY RECORDS.
2. EASEMENT FOR THE PURPOSE OF RIGHT OF WAY FOR ELECTRICAL TRANSMISSION LINES TOGETHER WITH INGRESS AND EGRESS AND INCIDENTALS, GRANTED TO GREAT WESTERN POWER COMPANY OF CALIFORNIA, A CORPORATION, BY DOCUMENT RECORDED OCTOBER 31, 1925 IN BOOK 130 OF OFFICIAL RECORDS, PAGE 282, MERCED COUNTY RECORDS.
3. EASEMENT FOR THE PURPOSE OF RIGHT OF WAY FOR ELECTRICAL TRANSMISSION LINES TOGETHER WITH INGRESS AND EGRESS AND INCIDENTALS, GRANTED TO GREAT WESTERN POWER COMPANY OF CALIFORNIA, A CORPORATION, BY DOCUMENT RECORDED MAY 9, 1928 IN BOOK 215 OF OFFICIAL RECORDS, PAGE 238, MERCED COUNTY RECORDS.

ABANDONMENT NOTE

PURSUANT TO SECTION 66434(G) OF THE SUBDIVISION MAP ACT THE FOLLOWING PORTION OF PUBLIC STREET IS HEREBY ABANDONED BY THE CITY OF MERCED: A PORTION OF THE RIGHT OF WAY DESCRIBED IN DOCUMENT NUMBER 2005-021374 THAT FALLS WITHIN LOT AS SHOWN HEREON.

SURVEYOR'S STATEMENT:

THIS MAP WAS PREPARED BY ME OR UNDER MY DIRECTION AND IS BASED UPON A FIELD SURVEY IN CONFORMANCE WITH THE REQUIREMENTS OF THE SUBDIVISION MAP ACT AND LOCAL ORDINANCE AT THE REQUEST OF MERCED PASEO, LLC, IN JULY OF 2006. I HEREBY STATE THAT THIS FINAL MAP SUBSTANTIALLY CONFORMS TO THE CONDITIONALLY APPROVED TENTATIVE MAP. I FURTHER STATE THAT ALL THE MONUMENTS SHOWN HEREON WILL BE OF THE CHARACTER AND OCCUPY THE POSITIONS INDICATED BEFORE SAID SUBDIVISION IMPROVEMENTS ARE ACCEPTED BY THE CITY OF MERCED, AND THAT SAID MONUMENTS WILL BE SUFFICIENT TO ENABLE THIS SURVEY TO BE RETRACED.

DATED THIS 19 DAY OF DECEMBER, 2006.

Dylan Crawford No. 7788 Exp. 12-31-2007 DYLAN CRAWFORD, P.L.S. 7788 LICENSE EXPIRATION DATE : DECEMBER 31, 2007



CITY ENGINEER'S STATEMENT:

I HEREBY STATE THAT I HAVE EXAMINED THIS FINAL MAP OF "PASEO" AND STATE THAT THE SUBDIVISION SHOWN HEREON IS SUBSTANTIALLY THE SAME AS IT APPEARED ON THE TENTATIVE MAP, AND ANY APPROVED ALTERATIONS THEREOF, THAT ALL PROVISIONS OF THE SUBDIVISION MAP ACT AND ANY LOCAL ORDINANCES APPLICABLE AT THE TIME OF APPROVAL OF THE TENTATIVE MAP HAVE BEEN COMPLIED WITH, AND I AM SATISFIED THAT THIS MAP IS TECHNICALLY CORRECT.

DATED THIS 26 DAY OF February, 2007.

David L. Tucker DAVID TUCKER, R.C.E. 18544 Exp. 6/30/07 LICENSE EXPIRATION DATE: JUNE 30, 2007



CITY CLERK'S STATEMENT:

I, JAMES G. MARSHALL, CITY CLERK OF THE CITY OF MERCED, STATE OF CALIFORNIA, DO HEREBY STATE THAT AT THE REGULAR MEETING OF THE CITY COUNCIL OF THE CITY OF MERCED, STATE OF CALIFORNIA, HELD ON THIS 26 DAY OF FEBRUARY 2007, THE ACCOMPANYING FINAL MAP OF "PASEO" WAS APPROVED, AND ACCEPTED ON BEHALF OF THE PUBLIC FOR PUBLIC USE, SUBJECT TO SATISFACTORY COMPLETION OF ALL IMPROVEMENTS, THE OFFER OF DEDICATION OF ALL PUBLIC UTILITY EASEMENTS (P.U.E.), PUBLIC FACILITY EASEMENT (P.F.E.), DRIVES, STREETS, AVENUES AND OTHER PUBLIC PLACES AND DEDICATIONS ON THIS FINAL MAP. I FURTHER STATE THAT PURSUANT TO SECTION 66434(G) OF THE SUBDIVISION MAP ACT THE FOLLOWING PORTION OF PUBLIC STREET IS HEREBY ABANDONED BY THE CITY OF MERCED: A PORTION OF THE RIGHT OF WAY DESCRIBED IN DOCUMENT NUMBER 2005-021374 THAT FALLS WITHIN LOT AS SHOWN HEREON.

DATED THIS 26 DAY OF FEB, 2007.

James G. Marshall JAMES G. MARSHALL, CITY CLERK OF THE CITY OF MERCED

RECORDER'S STATEMENT:

FILED THIS 27 DAY OF February, 2007, AT 2:20 O'CLOCK P.M. IN VOLUME 76 NO. 2007-013459 OF OFFICIAL PLATS, AT PAGES 39-44, AT THE REQUEST OF MERCED PASEO, LLC FEE: \$ 18.00 p/d.

M. STEPHEN JONES BY: Jennifer Padilla ASSISTANT DEPUTY RECORDER MERCED COUNTY, CALIFORNIA

CITY OF MERCED FINAL MAP NO. 5343

VOL. 76 PG. 39 SHEET 1 OF 6

PASEO

BEING A PORTION OF THE SOUTHEAST QUARTER OF SECTION 31 AS SHOWN ON THE "MAP OF BELLA VISTA ESTATES UNIT NO. 1", FILED FOR RECORD ON OCTOBER 18, 1967, IN VOLUME 17 OF OFFICIAL PLATS, AT PAGES 47-49, MERCED COUNTY RECORDS, SITUATE IN TOWNSHIP 6 SOUTH, RANGE 14 EAST, MOUNT DIABLO BASE AND MERIDIAN.

CITY OF MERCED, COUNTY OF MERCED,
STATE OF CALIFORNIA



1165 Scenic Drive, Suite A, Modesto, CA 95350
Ph 209.571.1765 Fax 209.571.2466
odellengineering.com

LEGEND

- FOUND MONUMENT AS NOTED
- FOUND MONUMENT IN MONUMENT WELL AS NOTED
- ▲ FOUND GPS CONTROL POINT AS NOTED (R6)
- SET 3/4" (I.D.) x 24" I.P. TAGGED P.L.S. 7788
- SET 3/4" (I.D.) x 24" I.P. TAGGED P.L.S. 7788 FOR 3.00' WITNESS CORNER, MEASURED ALONG LOT LINE, WHERE NO LOT LINE OCCURS OR AT RADIAL BEARING AS INDICATED
- △ SET 3/4" (I.D.) x 24" IRON PIPE TAGGED P.L.S. 7788 FOR 3'X3' WITNESS CORNER. SEE WITNESS CORNER TABLE ON PAGE 6 OF 6 FOR BEARING AND DISTANCE FROM TRUE CORNER
- ⊥ SET 3/4" (I.D.) x 24" I.P. AT LOT CORNERS UNLESS NOTED OTHERWISE
- BOUNDARY LINE
- - - CENTERLINE
- · - · SECTION LINE
- ① CURVE REFERENCE NUMBER
- L LINE REFERENCE NUMBER
- [1] WITNESS CORNER REFERENCE NUMBER
- SFN SEARCHED, FOUND NOTHING, NOTING SET UNLESS NOTED OTHERWISE
- (I.D.) INSIDE DIAMETER
- I.P. IRON PIPE
- O.P. OFFICIAL PLAT
- P.M. PARCEL MAP
- P.U.E. PUBLIC UTILITY EASEMENT
- P.F.E. PUBLIC FACILITY EASEMENT
- U.E. USE EASEMENT
- M.C.R. MERCED COUNTY RECORDS
- P.G.&E. PACIFIC GAS AND ELECTRIC
- (M) MEASURED THIS SURVEY
- (R) RADIAL BEARING
- M.I.D. MERCED IRRIGATION DISTRICT

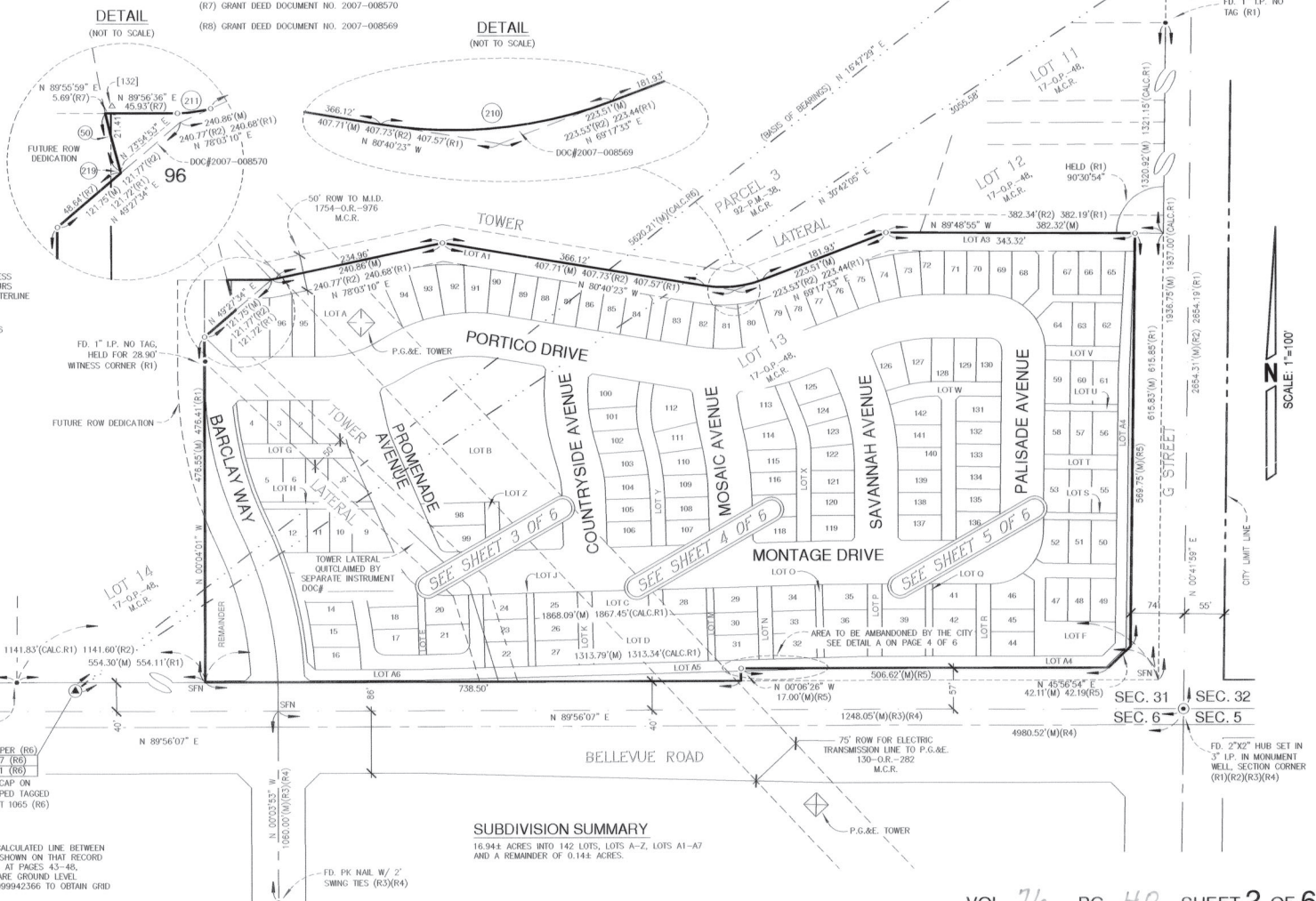
REFERENCES

- (R1) MAP OF BELLA VISTA ESTATES UNIT NO. 2: 17-0P-47, M.C.R.
- (R2) FINAL MAP OF BELLEVUE RANCH: 92-P.M.-38, M.C.R.
- (R3) BELLEVUE RANCH EAST-VILLAGE 16 LARGE LOT FINAL MAP: 61-0P-39, M.C.R.
- (R4) TRACT NO. 5270 BELLEVUE RANCH EAST - PHASE 1: 61-0P-21, M.C.R.
- (R5) BELLEVUE AND G STREET RIGHT-OF-WAY DEDICATION AND AGREEMENT: DOC# 2005-021374, M.C.R.
- (R6) RECORD OF SURVEY FOR GPS CONTROL NETWORK: 27-5-43, M.C.R.
- (R7) GRANT DEED DOCUMENT NO. 2007-008570
- (R8) GRANT DEED DOCUMENT NO. 2007-008569

NOTES:

1. ALL DISTANCES SHOWN HEREON ARE MEASURED UNLESS OTHERWISE NOTED.
2. ALL W.C. MEASURED ALONG LOT COMMON LINE, WHERE NO COMMON LOT LINE OCCURS W.C. WILL BE SET PERPENDICULAR TO STREET CENTERLINE OR ALONG RADIAL BEARING AS INDICATED UNLESS NOTED OTHERWISE.
3. ALL DISTANCES SHOWN HEREON ARE GROUND DISTANCES. TO CONVERT GROUND DISTANCE TO GRID DISTANCE MULTIPLY BY 0.99994448.
4. A PUBLIC UTILITY EASEMENT IS HEREBY DEDICATED BY THIS MAP ACROSS ALL OF LOTS G, I, K, C, N, P, R, F, T, V, A1, A2, A3.
5. A PUBLIC FACILITY EASEMENT IS HEREBY DEDICATED BY THIS MAP TO THE CITY OF MERCED ACROSS ALL OF LOTS A4, A5, A6, A7, A AND B.
6. AN EMERGENCY ACCESS EASEMENT IS HEREBY DEDICATED BY THIS MAP TO THE CITY OF MERCED ACROSS ALL OF LOT K.
7. SEE SHEET 6 OF 6 FOR ALL LINE TABLES, CURVE TABLES AND WITNESS CORNER TABLES.

GRID COORDINATES PER (R6)
N = 1959365.657 (R6)
E = 6570889.301 (R6)
FD. 2" ALUMINUM CAP ON
5/8" REBAR STAMPED TAGGED
RCE 15310, GPS PT 1063 (R6)



DETAIL (NOT TO SCALE)

DETAIL (NOT TO SCALE)

SCALE: 1"=100'



BASIS OF BEARINGS

THE BEARING OF N 1°47'29" E FOR THE CALCULATED LINE BETWEEN GPS POINT 1065 AND GPS POINT 1063 AS SHOWN ON THAT RECORD OF SURVEY FILED IN BOOK 27 OF SURVEYS, AT PAGES 43-48, MERCED COUNTY RECORDS, ALL DISTANCES ARE GROUND LEVEL DISTANCES AND MUST BE MULTIPLIED BY 0.9999442566 TO OBTAIN GRID DISTANCES.

SUBDIVISION SUMMARY

16,944 ACRES INTO 142 LOTS, LOTS A-Z, LOTS A1-A7 AND A REMAINDER OF 0.144 ACRES.

PASEO

BEING A PORTION OF THE SOUTHEAST QUARTER OF SECTION 31 AS SHOWN ON THE "MAP OF BELLA VISTA ESTATES UNIT NO. 1", FILED FOR RECORD ON OCTOBER 18, 1967, IN VOLUME 17 OF OFFICIAL PLATS, AT PAGES 47-49, MERCED COUNTY RECORDS, SITUATE IN TOWNSHIP 6 SOUTH, RANGE 14 EAST, MOUNT DIABLO BASE AND MERIDIAN.

CITY OF MERCED, COUNTY OF MERCED, STATE OF CALIFORNIA



1165 Scenic Drive, Suite A, Modesto, CA 95350
Ph 209.571.1765 Fax 209.571.2466
odellengineering.com

NOTES:

1. ALL DISTANCES SHOWN HEREON ARE MEASURED UNLESS OTHERWISE NOTED.
2. ALL W.C. MEASURED ALONG LOT COMMON LINE WHERE NO COMMON LOT LINE OCCURS W.C. WILL BE SET PERPENDICULAR TO STREET CENTERLINE OR ALONG RADIAL BEARING AS INDICATED UNLESS NOTED OTHERWISE.
3. ALL DISTANCES SHOWN HEREON ARE GROUND DISTANCES. TO CONVERT GROUND DISTANCE TO GRID DISTANCE MULTIPLY BY 0.99994448.
4. A PUBLIC UTILITY EASEMENT IS HEREBY DEDICATED BY THIS MAP ACROSS ALL OF LOTS G, I, K, C, N, P, R, F, T, V, A1, A2, A3.
5. A PUBLIC FACILITY EASEMENT IS HEREBY DEDICATED BY THIS MAP TO THE CITY OF MERCED ACROSS ALL OF LOTS A4, A5, A6, A7, A AND B.
6. AN FACILITY ACCESS EASEMENT IS HEREBY DEDICATED BY THIS MAP TO THE CITY OF MERCED ACROSS ALL OF LOT K.
7. SEE SHEET 2 OF 6 FOR LEGEND AND REFERENCES AND BASIS OF BEARINGS.
8. SEE SHEET 6 OF 6 FOR ALL LINE TABLES, CURVE TABLES AND WITNESS CORNER TABLES.

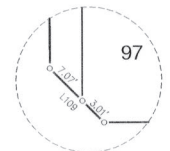
SCALE: 1"=40'



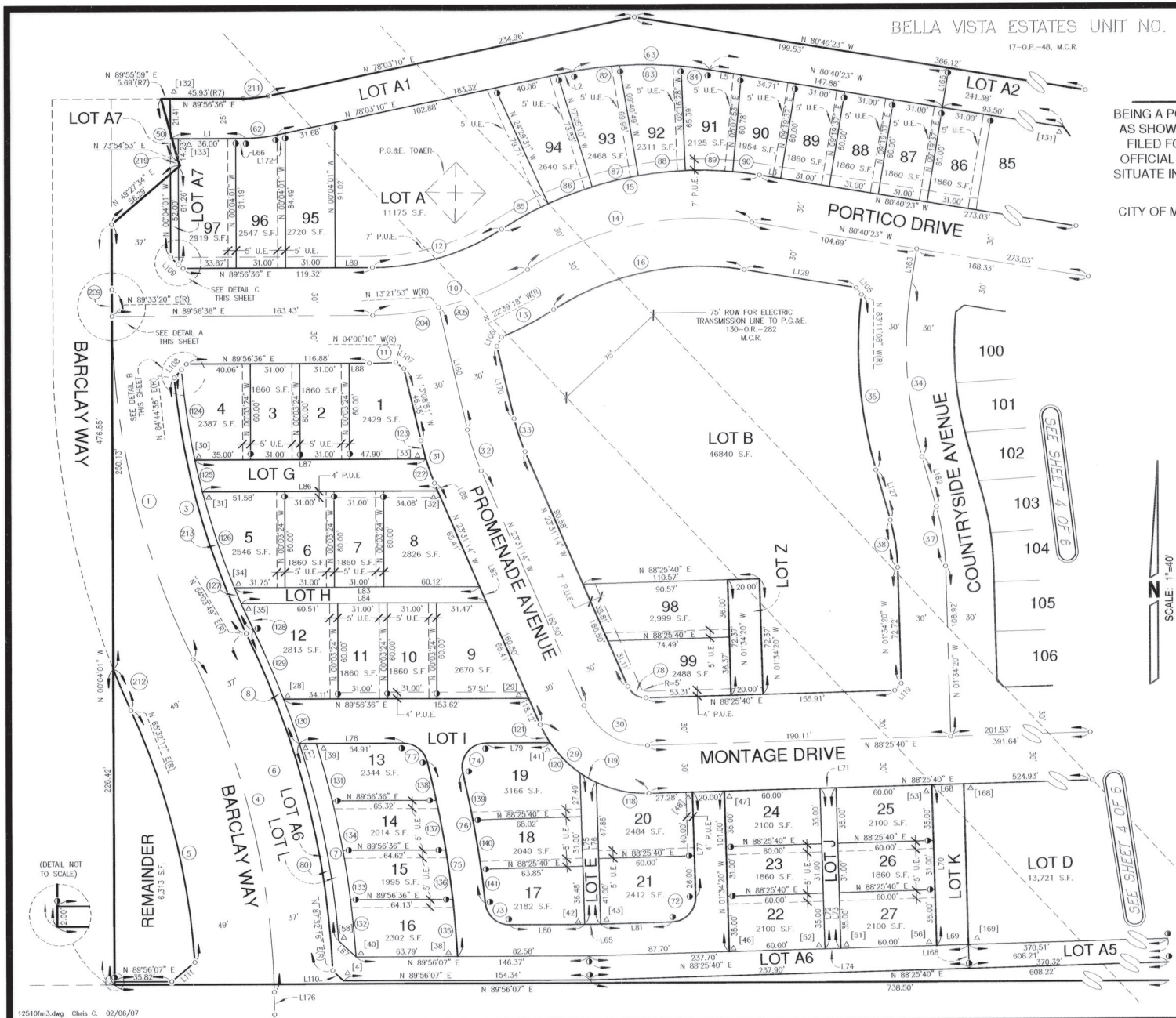
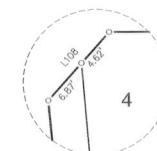
DETAIL A
(NOT TO SCALE)



DETAIL C
(NOT TO SCALE)



DETAIL B
(NOT TO SCALE)



BELLA VISTA ESTATES UNIT NO. 1

17-O.P.-48, M.C.R.

PASEO

BEING A PORTION OF THE SOUTHEAST QUARTER OF SECTION 31 AS SHOWN ON THE "MAP OF BELLA VISTA ESTATES UNIT NO. 1", FILED FOR RECORD ON OCTOBER 18, 1967, IN VOLUME 17 OF OFFICIAL PLATS, AT PAGES 47-49, MERCED COUNTY RECORDS, SITUATE IN TOWNSHIP 6 SOUTH, RANGE 14 EAST, MOUNT DIABLO BASE AND MERIDIAN.

CITY OF MERCED, COUNTY OF MERCED, STATE OF CALIFORNIA



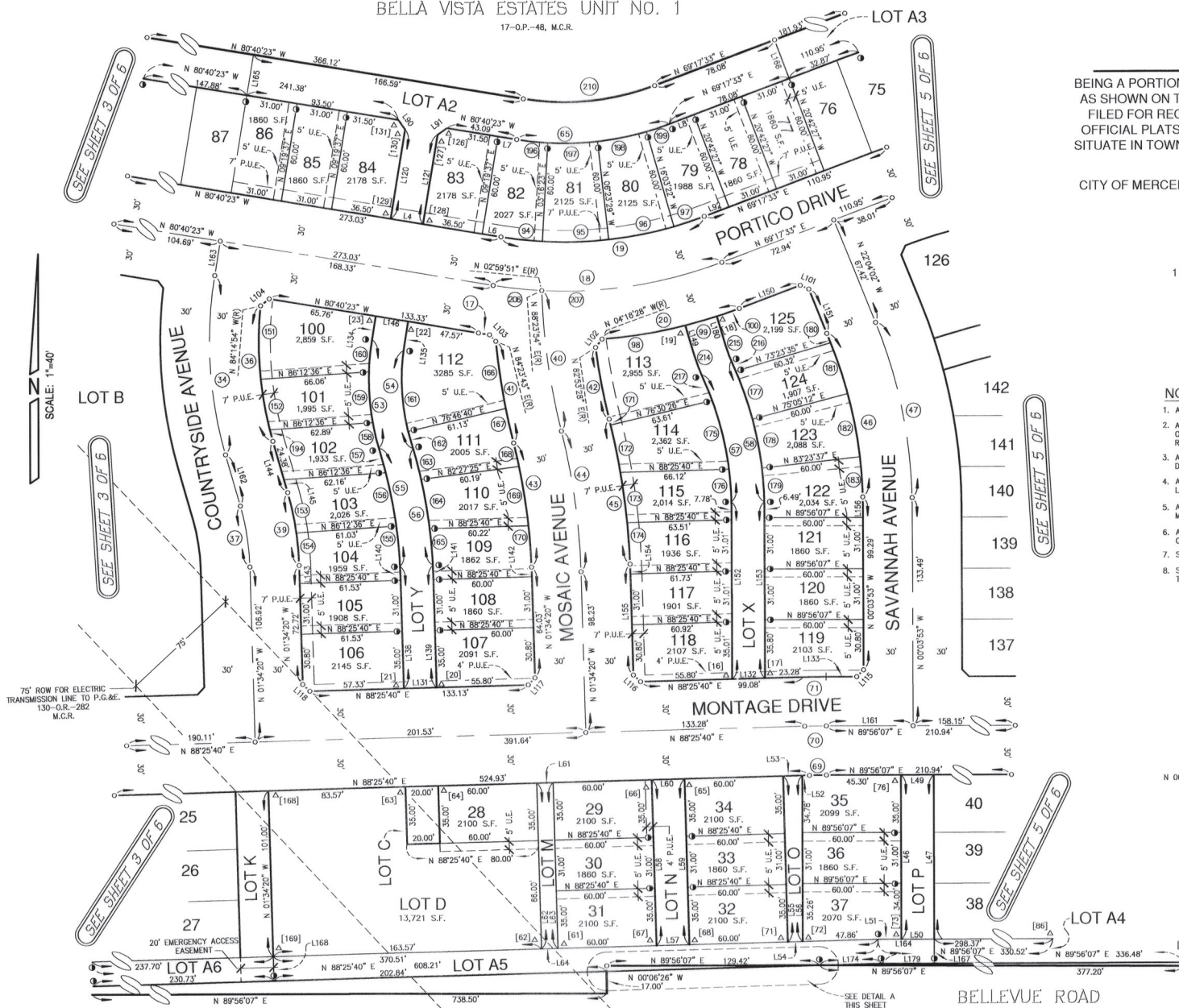
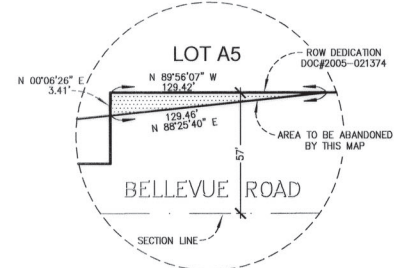
1165 Scenic Drive, Suite A, Modesto, CA 95350
Ph 209.571.1765 Fax 209.571.2466
odellengineering.com

NOTES:

1. ALL DISTANCES SHOWN HEREON ARE MEASURED UNLESS OTHERWISE NOTED.
2. ALL W.C. MEASURED ALONG LOT COMMON LINE, WHERE NO COMMON LOT LINE OCCURS W.C. WILL BE SET PERPENDICULAR TO STREET CENTERLINE OR ALONG RADIAL BEARING AS INDICATED UNLESS NOTED OTHERWISE.
3. ALL DISTANCES SHOWN HEREON ARE GROUND DISTANCES. TO CONVERT GROUND DISTANCE TO GRID DISTANCE MULTIPLY BY 0.9994448.
4. A PUBLIC UTILITY EASEMENT IS HEREBY DEDICATED BY THIS MAP ACROSS ALL OF LOTS G, I, K, C, N, P, R, F, T, V, A1, A2, A3.
5. A PUBLIC FACILITY EASEMENT IS HEREBY DEDICATED BY THIS MAP TO THE CITY OF MERCED ACROSS ALL OF LOTS A4, A5, A6, A7, A AND B.
6. AN EMERGENCY ACCESS EASEMENT IS HEREBY DEDICATED BY THIS MAP TO THE CITY OF MERCED ACROSS ALL OF LOT K.
7. SEE SHEET 2 OF 6 FOR LEGEND AND REFERENCES AND BASIS OF BEARINGS.
8. SEE SHEET 6 OF 6 FOR ALL LINE TABLES, CURVE TABLES AND WITNESS CORNER TABLES.

DETAIL A

(NOT TO SCALE)

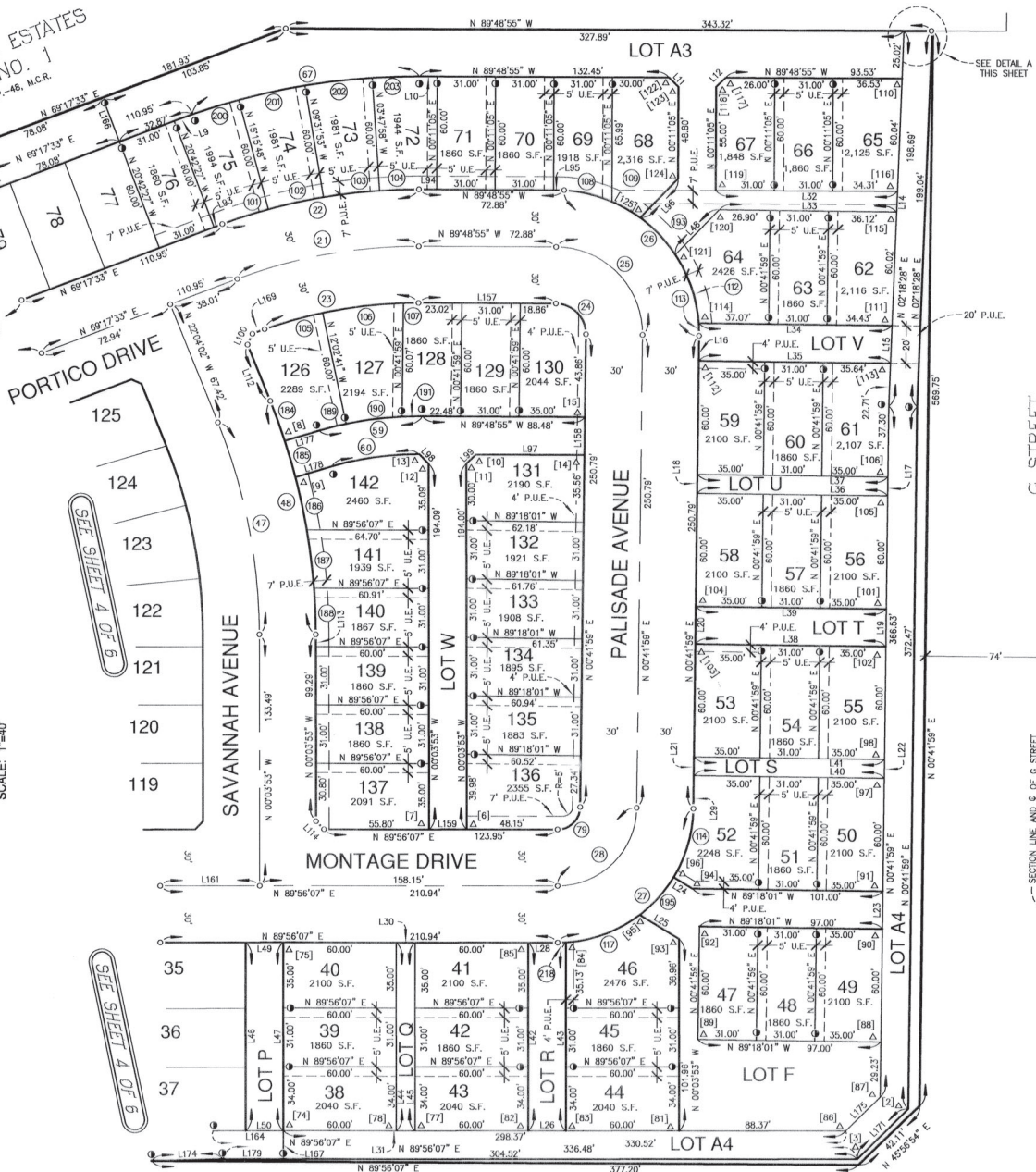


SCALE: 1"=40'

75' ROW FOR ELECTRIC TRANSMISSION LINE TO P.G.&E. 130-O.R.-282 M.C.R.

SEE DETAIL A THIS SHEET

BELLA VISTA ESTATES
UNIT NO. 1
17-O.P.-48, M.C.A.



PASEO

BEING A PORTION OF THE SOUTHEAST QUARTER OF SECTION 31 AS SHOWN ON THE "MAP OF BELLA VISTA ESTATES UNIT NO. 1," FILED FOR RECORD ON OCTOBER 18, 1967, IN VOLUME 17 OF OFFICIAL PLATS, AT PAGES 47-49, MERCED COUNTY RECORDS, SITUATE IN TOWNSHIP 6 SOUTH, RANGE 14 EAST, MOUNT DIABLO BASE AND MERIDIAN.

CITY OF MERCED, COUNTY OF MERCED, STATE OF CALIFORNIA



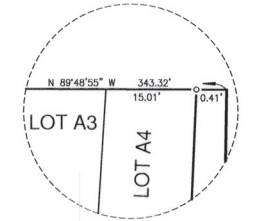
1165 Scenic Drive, Suite A, Modesto, CA 95350
Ph 209.571.1765 Fax 209.571.2466
odellengineering.com

NOTES:

- 1. ALL DISTANCES SHOWN HEREON ARE MEASURED UNLESS OTHERWISE NOTED.
- 2. ALL W.C. MEASURED ALONG LOT COMMON LINE. WHERE NO COMMON LOT LINE OCCURS W.C. WILL BE SET PERPENDICULAR TO STREET CENTERLINE OR ALONG RADIAL BEARING AS INDICATED UNLESS NOTED OTHERWISE.
- 3. ALL DISTANCES SHOWN HEREON ARE GROUND DISTANCES. TO CONVERT GROUND DISTANCE TO GRID DISTANCE MULTIPLY BY 0.99994448.
- 4. A PUBLIC UTILITY EASEMENT IS HEREBY DEDICATED BY THIS MAP ACROSS ALL OF LOTS G, I, K, C, N, P, R, F, T, V, A1, A2, A3.
- 5. A PUBLIC FACILITY EASEMENT IS HEREBY DEDICATED BY THIS MAP TO THE CITY OF MERCED ACROSS ALL OF LOTS A4, A5, A6, A7, A AND B.
- 6. AN EMERGENCY ACCESS EASEMENT IS HEREBY DEDICATED BY THIS MAP TO THE CITY OF MERCED ACROSS ALL OF LOT K.
- 7. SEE SHEET 2 OF 6 FOR LEGEND AND REFERENCES AND BASIS OF BEARINGS.
- 8. SEE SHEET 6 OF 6 FOR ALL LINE TABLES, CURVE TABLES AND WITNESS CORNER TABLES.

DETAIL A

(NOT TO SCALE)



CURVE TABLE

Table with 4 columns: CURVE, RADIUS, LENGTH, DELTA. Contains 43 rows of curve data.

Table with 4 columns: CURVE, RADIUS, LENGTH, DELTA. Contains 100 rows of curve data.

Table with 4 columns: CURVE, RADIUS, LENGTH, DELTA. Contains 100 rows of curve data.

Table with 4 columns: CURVE, RADIUS, LENGTH, DELTA. Contains 100 rows of curve data.

Table with 4 columns: CURVE, RADIUS, LENGTH, DELTA. Contains 100 rows of curve data.

PASEO

BEING A PORTION OF THE SOUTHEAST QUARTER OF SECTION 31 AS SHOWN ON THE "MAP OF BELLA VISTA ESTATES UNIT NO. 1", FILED FOR RECORD ON OCTOBER 18, 1967, IN VOLUME 17 OF OFFICIAL PLATS, AT PAGES 47-49, MERCED COUNTY RECORDS, SITUATE IN TOWNSHIP 6 SOUTH, RANGE 14 EAST, MOUNT DIABLO BASE AND MERIDIAN.

CITY OF MERCED, COUNTY OF MERCED, STATE OF CALIFORNIA



1165 Scenic Drive, Suite A, Modesto, CA 95350
Ph 209.571.1765 Fax 209.571.2466
odellengineering.com

LINE TABLE

Table with 3 columns: LINE, BEARING, LENGTH. Contains 44 rows of line data.

Table with 3 columns: LINE, BEARING, LENGTH. Contains 100 rows of line data.

Table with 3 columns: LINE, BEARING, LENGTH. Contains 100 rows of line data.

Table with 3 columns: LINE, BEARING, LENGTH. Contains 100 rows of line data.

Table with 3 columns: LINE, BEARING, LENGTH. Contains 100 rows of line data.

WITNESS CORNER TABLE

(MEASURED FROM WITNESS CORNER TO TRUE CORNER)

Table with 3 columns: LINE, BEARING, LENGTH. Contains 44 rows of witness corner data.