

1 NORTH ELEVATION
1/4" = 1'-0"

4' 2' 0' 4' 8'
1/4" = 1'-0"

Issued For:

CVL02828

RAHILLY PARK

3400 NORTH PARSONS
MERCED, CA 95340
Fax 16159935
USID#

Prepared For:



Vendor:



AT&T SITE NO: CVL02828

PROJECT NO: 25-002

DRAWN BY: BW

CHECKED BY: BW

REV	DATE	DESCRIPTION
3		
2		
1		
0		
B		
A	3/10/2025	90% 2D SUB

Licensee:



IT IS A VIOLATION OF LAW FOR ANY PERSON, UNLESS THEY ARE ACTING UNDER THE DIRECTION OF A LICENSED PROFESSIONAL ENGINEER, TO ALTER THIS DOCUMENT.

Designer / Engineer:



Sheet Title:

PROPOSED ELEVATIONS

Sheet Number:

A-4.1

(E) TOP OF PALM TREES
68'-4" AGL, ± 251.4' AMSL

(P) TOP OF MONOPALM BRANCHES
60'-0" AGL, ± 243.0' AMSL

(P) TOP OF MONOPALM / AT&T ANTENNAS
55'-0" AGL, ± 238.0' AMSL

(P) AT&T ANTENNAS RAD CENTER
53'-0" AGL, ± 236.0' AMSL

(P) AT&T ANTENNAS RAD CENTER
51'-0" AGL, ± 234.0' AMSL

(P) AT&T RRU/SURGE RAD CENTER
43'-0" AGL, ± 226.0' AMSL

(E) TOP OF TREE
28'-0" AGL, ± 208.0' AMSL

(P) TOP OF CMU WALL / ICEBRIDGE
9'-0" AGL, ± 191.0' AMSL

(E) GRADE
7'-0" AGL, ± 183.0' AMSL

(P) 12'-0" JUMPERS FROM RRU/S TO ANTENNAS
(P) (8) AT&T MOBILITY ANTENNAS
(P) (3) AT&T MOBILITY DC-9 SQUID SURGE SUPPRESSORS
(P) (12) AT&T MOBILITY RRU BEHIND ANTENNAS
(P) PALM STEALTH "BULB" AROUND EQUIPMENT

(P) 55'-0" TALL MONOPALM TOWER

(P) DC POWER / FIBER TRUNKS INSIDE OF MONOPALM, ± 75'-0"

(P) SITE LIGHT ON TOP OF CMU WALL w/ MOTION SENSOR
(P) 8'-0" TALL CMU WALL - PAINT & TEXTURE TO MATCH EXISTING PARK BUILDING - PLAN IVY TO MATCH IVY AT FRONT OF PROPERTY

(P) 9'-0" TALL ICE BRIDGE

(P) 12'-0" WIDE METAL SWING GATE w/ REQUIRED AT&T SITE SIGNAGE & FIRE KNOX BOX

(P) AT&T MOBILITY COMPACT 30kW DIESEL BACKUP GENERATOR w/ 145 GALLON BELLY TANK

(P) AT&T MOBILITY 200A METER, CENA & UAM / HOFFMAN BOX FIRE EXTINGUISHER ON (P) STEEL H-FRAME

(P) AT&T MOBILITY VERTIV WUC CABINET w/ RAYCAP DC96 & 200A INTEGRATED LOAD CENTER MOUNTED TO EACH SIDE OF CABINET ON (P) CONCRETE SLAB

(E) PALM TREE GROVE

1 EAST ELEVATION
1/4" = 1'-0"

4' 2' 0' 4' 8'
1/4" = 1'-0"

Issued For:

CVL02828

RAHILLY PARK

3400 NORTH PARSONS
MERCED, CA 95340
FAX 1815935
USID#

Prepared For:

at&t
5001 Executive Parkway
San Ramon, California 94583

Vendor:

EPIC
WIRELESS GROUP LLC
Connecting a Wireless World
605 Coolidge Drive, Suite 100
Folsom, California 95630

AT&T SITE NO: CVL02828

PROJECT NO: 25-002

DRAWN BY: BW

CHECKED BY: BW

REV	DATE	DESCRIPTION
3		
2		
1		
0		
B		
A	3/10/2025	90% 2D SUB

Licensee:



IT IS A VIOLATION OF LAW FOR ANY PERSON UNLESS THEY ARE ACTING UNDER THE DIRECTION OF A LICENSED PROFESSIONAL ENGINEER TO ALTER THIS DOCUMENT.

Designer / Engineer:

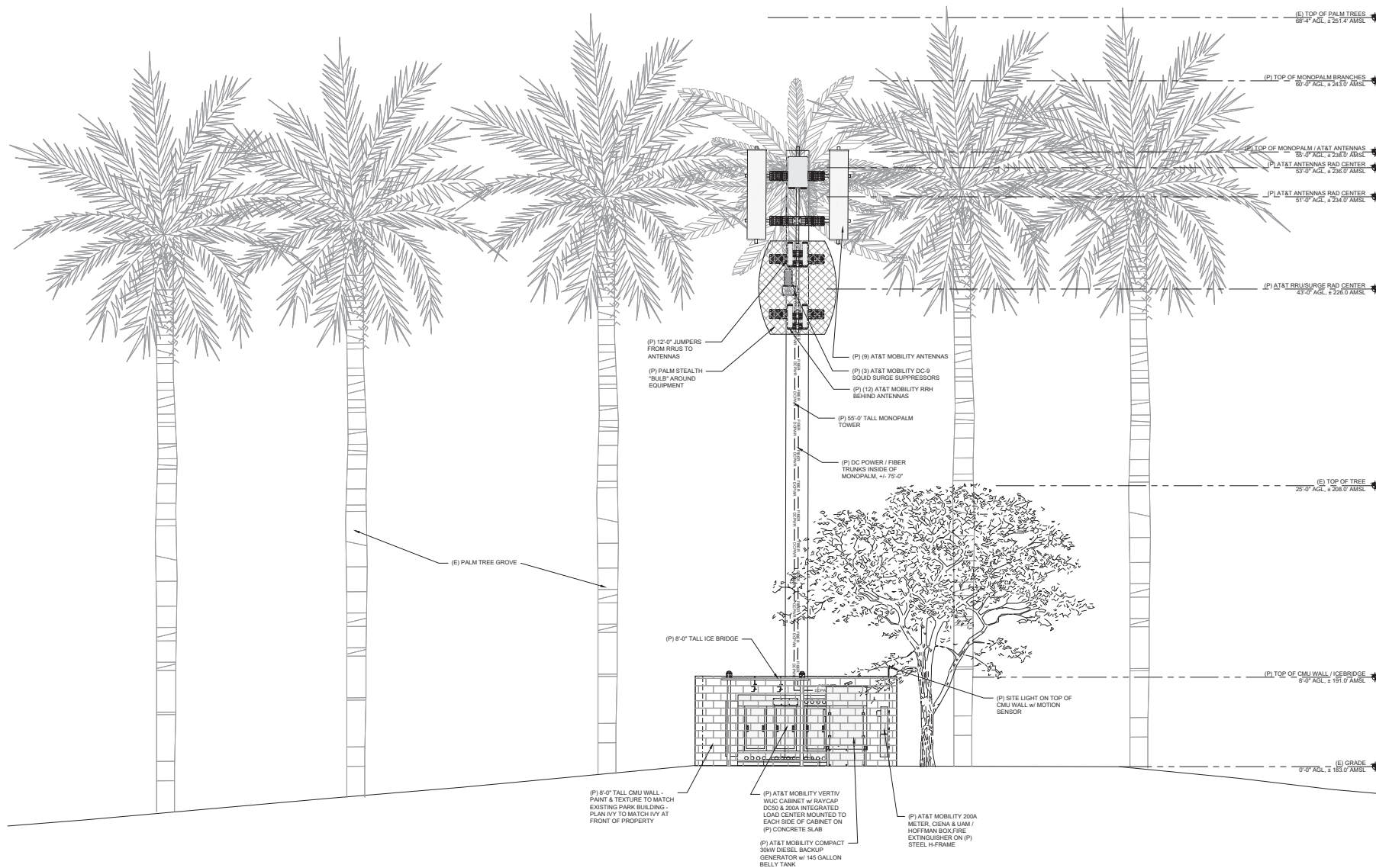
Norman Scheel Structural Engineer
1984 - 2025
36 YEARS OF EXCELLENCE
Norman Scheel Structural Engineer
5022 Sunrise Blvd.
Fair Oaks, California 95628

Sheet Title:

PROPOSED ELEVATIONS

Sheet Number:

A-4.2



1 SOUTH ELEVATION
1/4" = 1'-0"

4' 2' 0 4' 8'
1/4" = 1'-0"

Issued For:
CVL02828
RAHILLY PARK
3400 NORTH PARSONS
MERCED, CA 95340
FAX 16159935
USID#

Prepared For:
at&t
5001 Executive Parkway
San Ramon, California 94583

Vendor:
EPIC
WIRELESS GROUP LLC
Connecting a Wireless World
605 Coolidge Drive, Suite 100
Folsom, California 95630

AT&T SITE NO: CVL02828
PROJECT NO: 25-002
DRAWN BY: BW
CHECKED BY: BW

REV	DATE	DESCRIPTION
3		
2		
1		
0		
B		
A	3/10/2025	90% 2D SUB

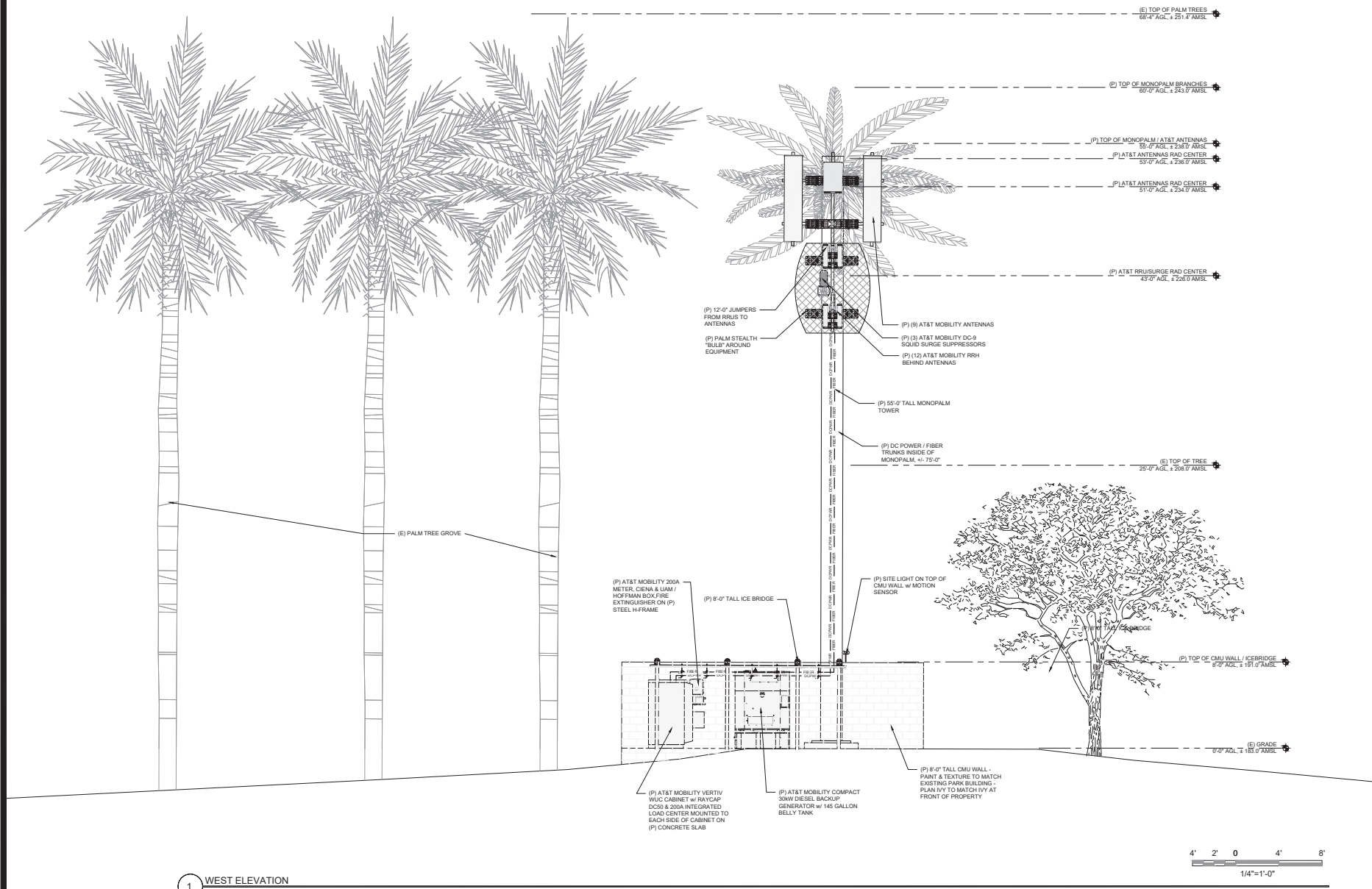
Licensee:
NORMAN J SCHEEL
No. 2567
Exp. 12-31-25
STRUCTURAL
STATE OF CALIFORNIA

IT IS A VIOLATION OF LAW FOR ANY PERSON UNLESS THEY ARE ACTING UNDER THE DIRECTION OF A LICENSED PROFESSIONAL ENGINEER TO ALTER THIS DOCUMENT.

Designer / Engineer:
Norman Scheel Structural Engineer
1934 - 2022
36 YEARS OF EXCELLENCE
Norman Scheel Structural Engineer
5022 Sunrise Blvd.
Fair Oaks, California 95628

Sheet Title:
PROPOSED ELEVATIONS

Sheet Number:
A-4.3



Issued For:
CVL02828
RAHILLY PARK
3400 NORTH PARSONS
MERCED, CA 95340
FAX 18189935
USID#

Prepared For:

5001 Executive Parkway
San Ramon, California 94583

Vendor:

WIRELESS GROUP LLC
Connecting a Wireless World
605 Coolidge Drive, Suite 100
Folsom, California 95630

AT&T SITE NO: CVL02828
PROJECT NO: 25-002
DRAWN BY: BW
CHECKED BY: BW

REV	DATE	DESCRIPTION
3		
2		
1		
0		
B		
A	3/10/2025	90% ZD SUB

Licensee:

IT IS A VIOLATION OF LAW FOR ANY PERSON UNLESS THEY ARE ACTING UNDER THE DIRECTION OF A LICENSED PROFESSIONAL ENGINEER TO ALTER THIS DOCUMENT.

Designer / Engineer:
Norman Scheel Structural Engineer
5022 Sunrise Blvd.
Fair Oaks, California 95628

Sheet Title:
PROPOSED ELEVATIONS

Sheet Number:
A-4.4