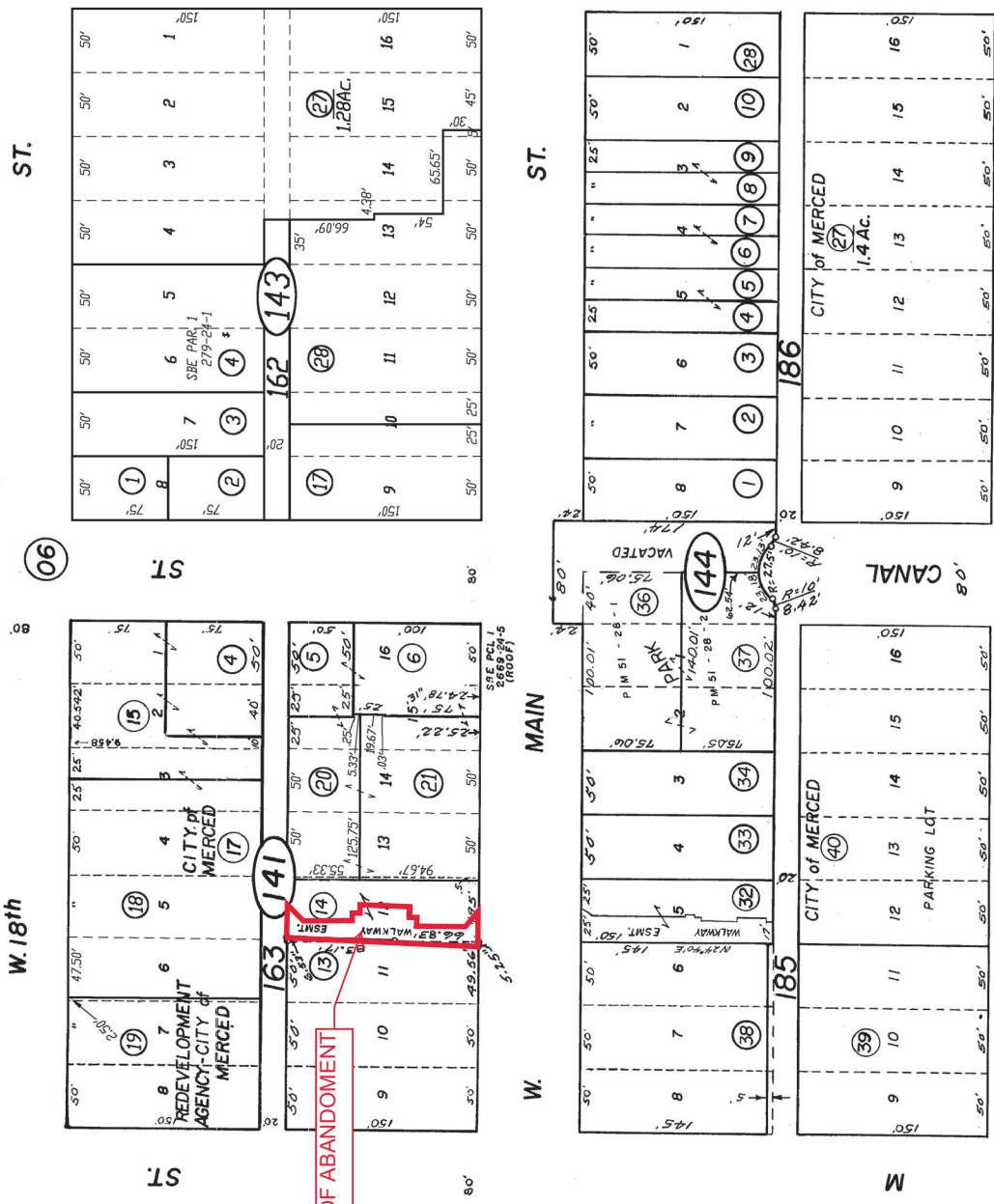


— NOTE —
 This map is for Assessment purposes only.
 It is not to be construed as portraying
 legal ownership or divisions of land for
 purposes of zoning or subdivision law.

TOWN OF MERCED
 R.M. Vol. 2 Pg. 12
POR. SEC. 30, T. 7S., R. 14E., M.D.B.&M.

Tax Rate Area
 5-49
 5-50

31-14



REVISIO
 5/65
 11/73
 12/76
 2/80
 12-28-05

ATTACHMENT 3

CITY OF MERCED
 Assessor's Map Bk. 31 -Pg. 14
 County of Merced, Calif.

1956

NOTE—Assessor's Block Numbers shown in Ellipses
 Assessor's Parcel Numbers shown in Circles