

General Vang Pao Park

PARK MASTER PLAN AND PHASE 1 TIMELINE



History of General Vang Pao Park

Dedicated through Bellevue Ranch Community Development Plan

- Reduced park development fees collected due to recession

Community petition to name Park after significant Hmong Community Leader- General Vang Pao

- Adopted by Council

Submission of several Prop 68 grants to State

- Unsuccessful due to census track economic status

P&CS awarded First 5 Merced County Safe Play Initiative Grant

- \$700,000 for two new playgrounds
 - Aletha June Playground at General Vang Pao Park
 - CP-42



NORTHWEST - DRONE IMAGE



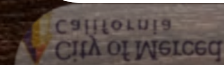
NORTHWEST - SKETCH



GENERAL VANG PAO PARK

EXISTING SITE

MERCED, CA



EXISTING SITE

MERCED, CA



Park Site Master Planning Efforts

Park Master Plan and construction ready design of Aletha June Playground

- RFP released in Summer 2024, awarded to Melton Design Group, Inc.

Review infrastructure and active use of site as flood basin and pump station

- Planning, Engineering, Public Works

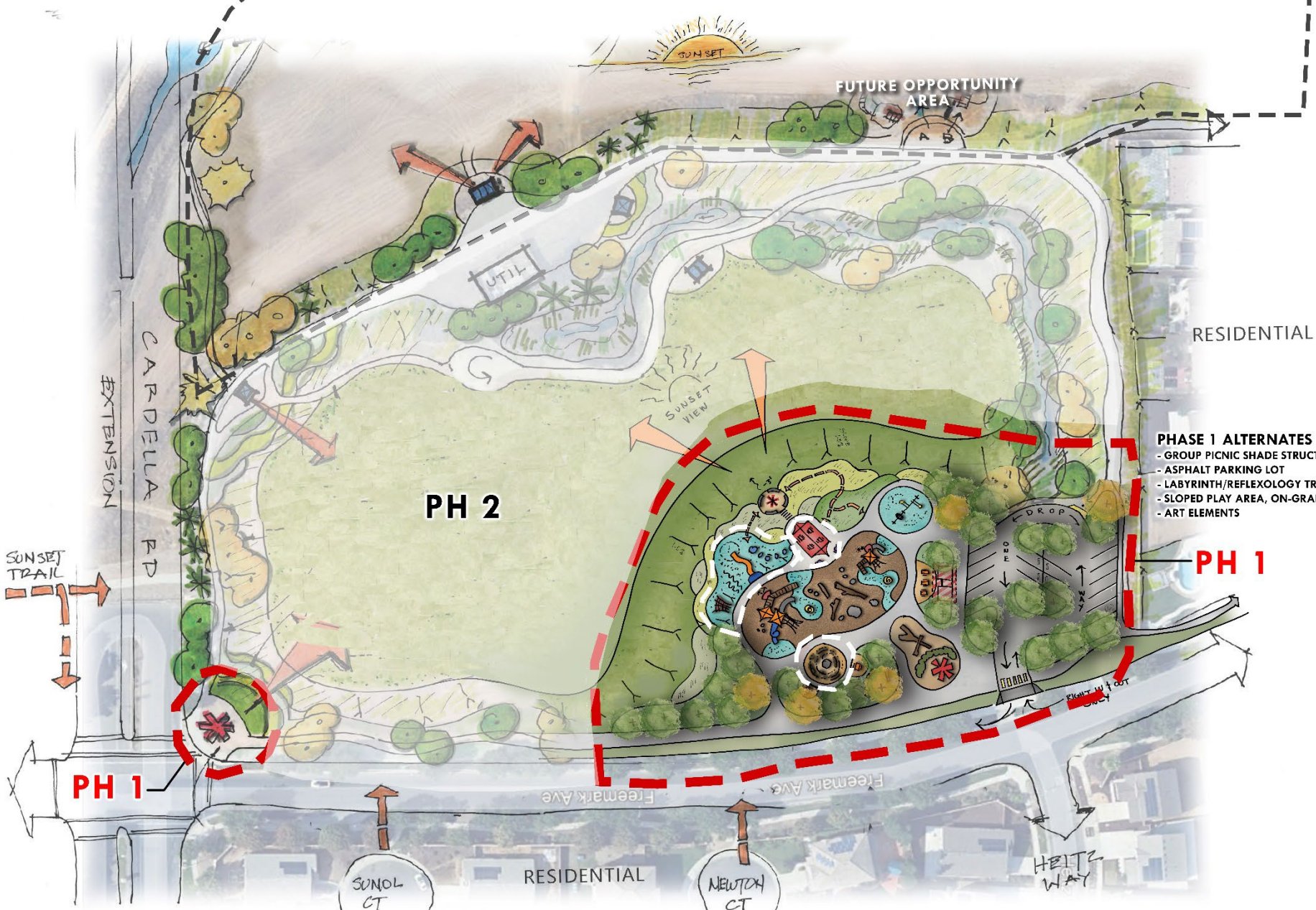
Host Community Stakeholder Meetings

- 2nd grade MCSD students (inclusive playground)
- Challenged Family Resource Center Parents (inclusive playground)
- General Vang Pao Park Committee (cultural representation of GVP memorial)
- Immediate neighboring residents and community at large (park and playground amenities)
 - Over 800 invitations delivered and promoted on social media



My favorite part was when you said General Vang Pao Park because I am Hmong.





- PHASE 1 ALTERNATES**
- GROUP PICNIC SHADE STRUCTURE
 - ASPHALT PARKING LOT
 - LABYRINTH/REFLEXOLOGY TRAIL
 - SLOPED PLAY AREA, ON-GRADE SLIDE
 - ART ELEMENTS

PRELIMINARY PROGRAM

(PHASE I)

- **ALL-INCLUSIVE PLAYGROUND, ALETHA JUNE**
 - DEDICATED PLAY AREAS AGES 2-5 & 5-13
- **PARKING AREA OFF FREEMARK AVE**
- **CULTURAL REPRESENTATION, HMONG COMMUNITY**
 - GENERAL VANG PAO MONUMENT
 - TERRACED RICE FIELD LANDSCAPING
 - INTERPRETIVE PANELS
 - NATURAL ELEMENTS, WAY OF LIFE
- **WATER-WISE LANDSCAPING & FEATURES**
 - NATIVE PLANTING
 - NO MOW TURF
 - SHADE TREES
 - POLLINATORS
- **LOOPING TRAILS, CONNECT TO EXISTING**
- **SEATING THROUGH SITE**
 - PICNIC PAVILION
 - ELEVATED OVERLOOKS
 - SEAT WALLS
 - SITE FURNISHINGS
- **FUN & UNIQUE ELEMENTS**
 - MONUMENT SIGN
 - THEMED STEEL CUT-OUTS
 - ON-GRADE SLIDE



GENERAL VANG PAO PLAZA / MONUMENT

- DEDICATED MONUMENT
- SEATING
- DECORATIVE HARDSCAPE
- INTERPRETIVE PANELS
- ACCESS TO UPPER TERRACE AND SLOPED PLAY AREA

SLOPED PLAY AREA

- ON-GRADE SLIDE,
- POUR-IN-PLACE FALL SURFACING
- REGRADE HILLSIDE AS NEEDED
- UNIQUE EXPERIENCE

**ALL-INCLUSIVE PLAYGROUND,
ALETHA JUNE**

- TOT PLAY STRUCTURE
- BIG KID PLAY STRUCTURE
- NETTED SPINNER, ACCESSIBLE
- SHADE STRUCTURES
- POUR-IN-PLACE FALL SURFACING SECTIONS
- NATURAL PLAY ELEMENTS

PICNIC SHADE STRUCTURE

- 4-6 PICNIC TABLES
- SLOPED ACCESS TO FUTURE FIELD
- SUNSET VIEWS!

TERRACE PLANTING AREA

- STEEL RETAINING SECTIONS
- NO-MOW TURF
- DECOMPOSED GRANITE PATHS
- NATIVE PLANTING
- ACCESS TO LOWER AREA

(E) MAINTENANCE PATH

- 12' WIDE PATH
- DRIVEWAY APRON WITH
- REMOVABLE BOLLARD

INCLUSIVE SWING AREA

- DOUBLE STRAP SWINGS
- NEST SWING
- POUR-IN-PLACE FALL SURFACING

PARKING LOT

- 18 STANDARD SPACES, 1 ADA, 1 VAN
- DROP-OFF AREA
- ONE WAY, RIGHT TURN IN AND OUT
- CROSSWALK CONNECTING SIDEWALK
- ACCESS TO 12' WIDE MAINTENANCE PATH
- SHADE TREES
- LIGHTING

WELLNESS AREA

- REFLEXOLOGY
- LABYRINTH
- SEATING

ENTRY PLAZA

- ENTRY SIGN AND PLANTER
- WELCOMING ARRIVAL
- ACCENT LIGHTING
- NATURAL LOGS AND PLANTING

PICNIC AREA AND PLANTER

- PICNIC TABLES
- NATIVE PLANTING
- FUTURE RESTROOM SITE





- PHASE 1 ALTERNATES**
- GROUP PICNIC SHADE STRUCTURE
 - ASPHALT PARKING LOT
 - LABYRINTH/REFLEXOLOGY TRAIL
 - SLOPED PLAY AREA, ON-GRADE SLIDE
 - ART ELEMENTS

PH 1

Freemark Ave

RESIDENTIAL

NEWTON CT

HEITZ WAY

RIGHT IN + OUT

DROP OFF

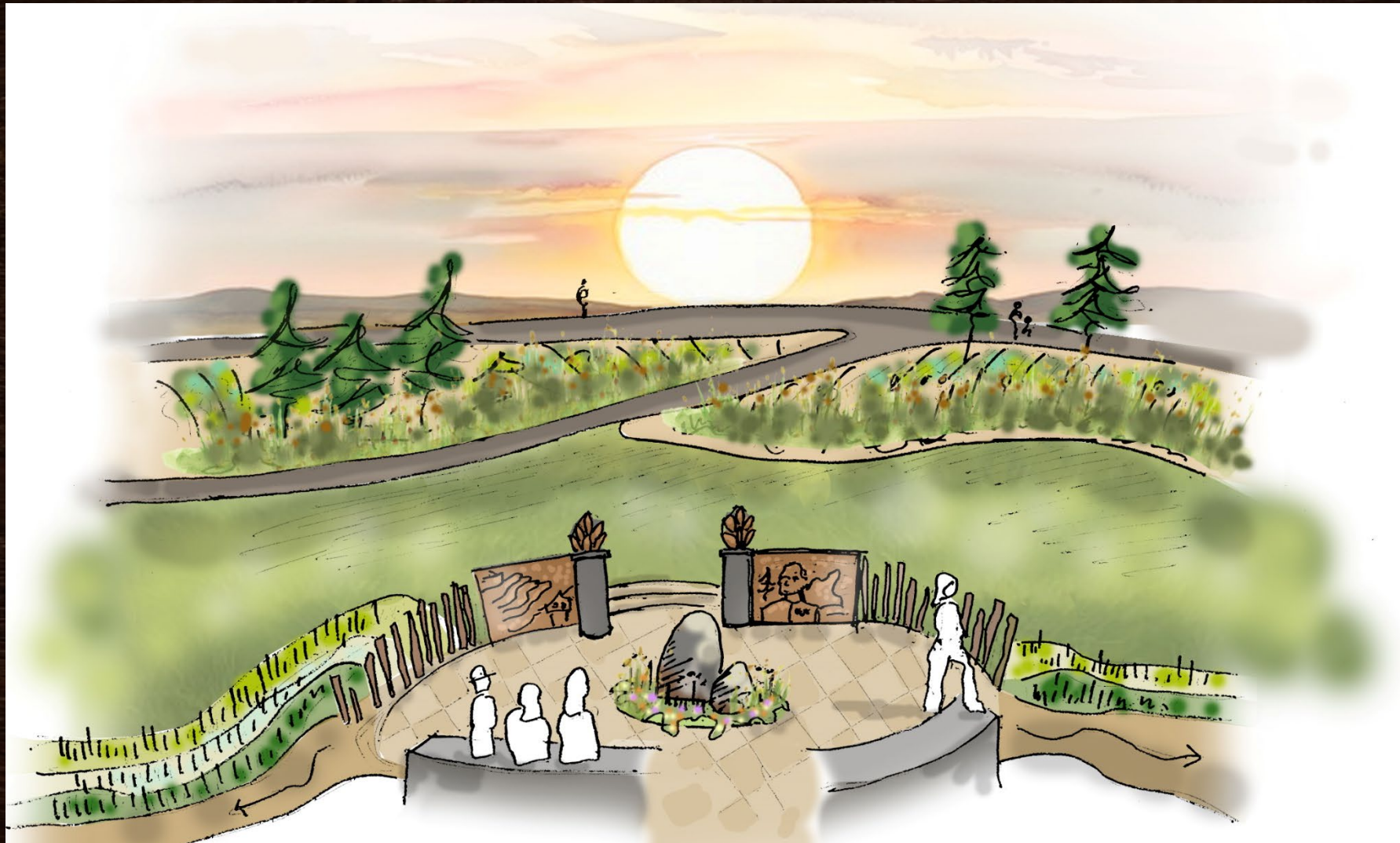
SUNSET VIEW



Sloped Play Area

Site Section

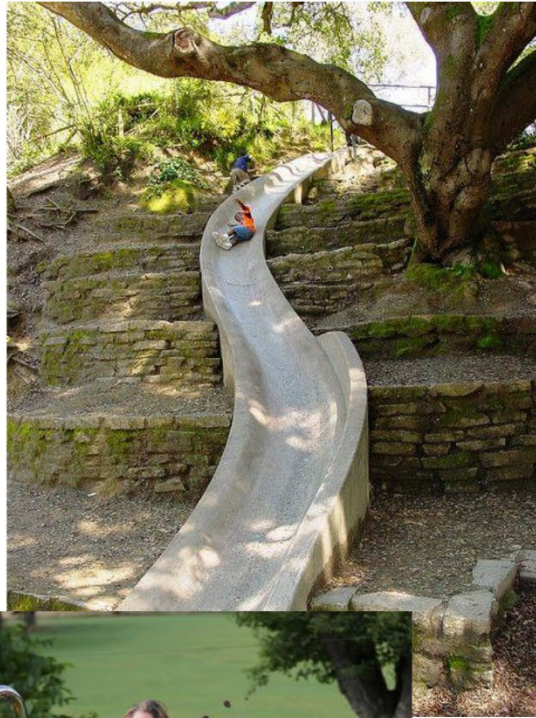
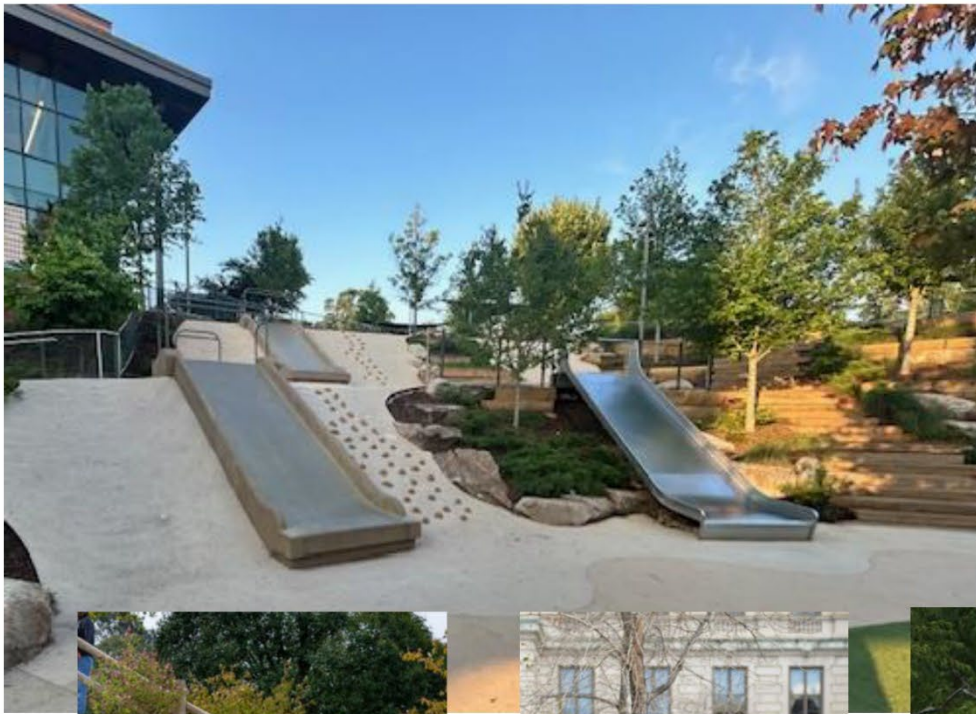




General Vang Pao Monument







Project Timeline

GENERAL VANG PAO PARK – CITY OF MERCED

Project Schedule

TASK DESCRIPTION	DATE:
AWARD OF CONTRACT	September 17, 2024
TASK 1 – PROJECT LAUNCH, COORDINATION and MANAGEMENT	October 2024
TASK 2 – SITE ANALYSIS, BASE DATA REVIEW and BASE MAP DEVELOPMENT	Oct – Nov 2024
TASK 3 – SCHEMATIC PLAN DEVELOPMENT and COST ESTIMATE	Oct. 2024 – Jan. 2025
a. Create Schematic Master Plans & Cost Analysis	Oct. – Nov.
b. City & Stakeholder Engagement Workshop	Dec 4 th -5 th
c. Refine and Gain Consensus on Selected Design Alternative	Jan – Feb 2025
d. Present to City Council	Jan 21 th @ 6:00pm
e. Park and Rec Commission and Public Meetings (two-week notice)	Jan 27 th @ 5:30pm
TASK 4 – MASTER PLAN DEVELOPMENT and COST ESTIMATE (30%)	Feb – May 2025
a. Develop Detailed Preferred Master Plan and Cost Estimate	Feb – Mar 2025
b. City Staff and Stakeholder Final Comments and Revision	February 2025
c. Present Master Plan and Playground to City Council and Public	March 2025
d. Authorization to Proceed to Construction Drawings for Site A	March 2025
e. Place cooperative purchase order for playground (6–8-month lead time)	March 2025
Pre-Purchase Playground Equipment \$250K	by end of May 2025
TASK 5 – CONSTRUCTION DRAWINGS and FINAL COST ESTIMATE (60%, 90% & 100%)	
a. 60% Construction Drawings and Review Period (1 week)	Apr – Jun 2025
b. 90% Construction Drawings (1 week)	Jun – Aug 2025
c. 100% Complete Construction Drawings and Final Cost Estimate	September 2025
TASK 6 – BID ADMINISTRATION	
a. Pre-Bid Meeting / Bids due	Sept 8/Sept 29, 2025
b. Bid Award	November 2025
TASK 7 – CONSTRUCTION ADMINISTRATION	
a. Start Construction	December 2025
b. Construction Complete	Spring 2026

Grand Opening for Spring!



Spring 2026!

**THANK
YOU!**

