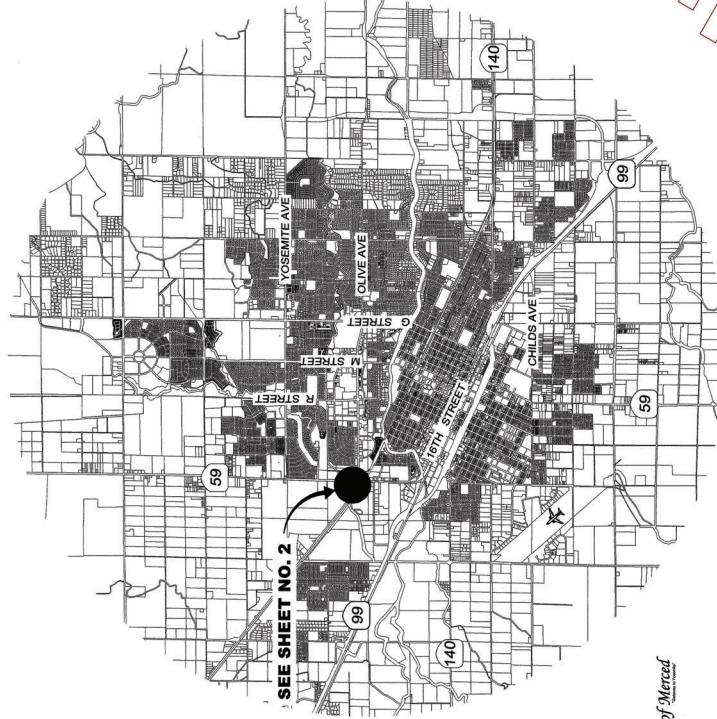


COMMUNITY FACILITIES DISTRICT NO. 2003-2 (SERVICES)
OF THE CITY OF MERCED
ANNEXATION NO. 19
(IMPROVEMENT AREA NO. 43)

CITY OF MERCED, COUNTY OF MERCED
STATE OF CALIFORNIA
OCTOBER 2021



VICINITY MAP
NOT TO SCALE

CITY SURVEYOR'S STATEMENT

THIS MAP WAS PREPARED BY ME OR UNDER MY DIRECTION IN CONFORMANCE WITH THE LAND SURVEYOR'S ACT ON December 2, 2021.

Joe M. Cardoso
JOE M. CARDOSO, P.L.S. #8851



CITY CLERK STATEMENT

FILED IN THE OFFICE OF THE CITY CLERK OF THE CITY OF MERCED THIS

2 DAY OF December, 2021.

Stephanie R. Dietz
STEPHANIE R. DIETZ
CITY CLERK-CITY OF
MERCED

I HEREBY CERTIFY THAT THE WITHIN MAPS SHOWING PROPOSED BOUNDARIES OF CITY OF MERCED COMMUNITY FACILITIES DISTRICT, IN THE CITY OF MERCED AND THE COUNTY OF MERCED, STATE OF CALIFORNIA, WAS APPROVED BY THE CITY COUNCIL OF THE CITY OF MERCED AT A REGULAR MEETING THEREOF, HELD ON THE DAY OF November 15, 2021, BY ITS RESOLUTION NO. 2021-105.

Michael R. Beltran II
MICHAEL R. BELTRAN II
CITY CLERK
CITY OF MERCED

CITY ENGINEER

Michael R. Beltran II
MICHAEL R. BELTRAN II, R.C.E. 83916 CITY
ENGINEER
CITY OF MERCED



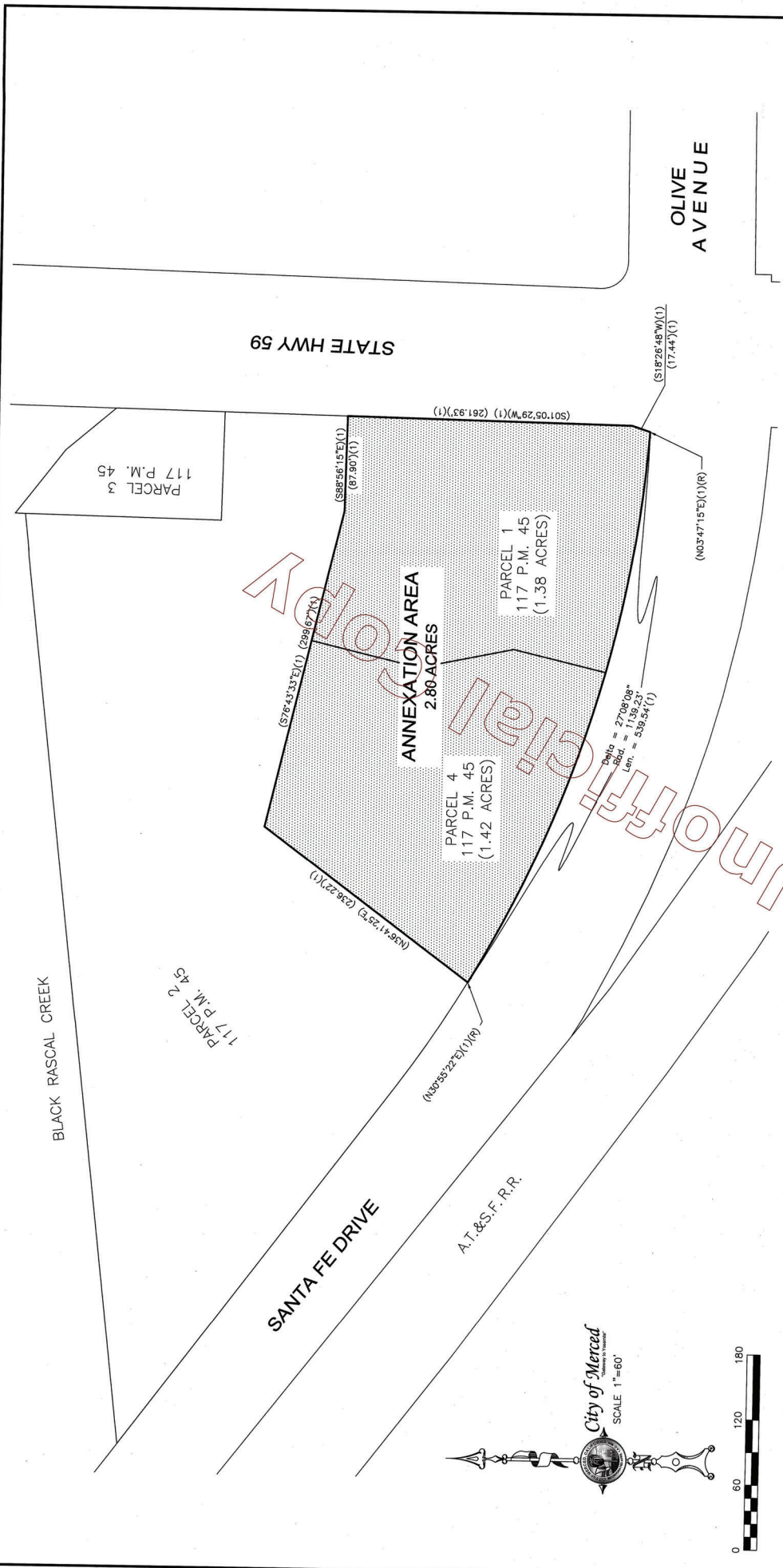
RECORDER'S STATEMENT

FILED THIS 2nd DAY OF December, 2021, AT THE HOUR OF 2 O'CLOCK 36 P.M.,
IN BOOK 15 OF MAPS OF ASSESSMENT AND COMMUNITY FACILITIES DISTRICT AT PAGES 18-19
IN THE OFFICE OF THE COUNTY RECORDER IN THE COUNTY OF MERCED, STATE OF CALIFORNIA.

MATT H. MAY
MERCED COUNTY RECORDER

DOCUMENT No. 2021053516
FEE: No Fee

BY: *Matt H. May*
MERCED COUNTY DEPUTY RECORDER



**COMMUNITY FACILITIES DISTRICT NO. 2003-2
(SERVICES) OF THE CITY OF MERCED,
ANNEXATION NO. 19**

(IMPROVEMENT AREA NO. 43)

CITY OF MERCED, COUNTY OF MERCED
OCTOBER 2021
STATE OF CALIFORNIA
SCALE 1"=60'

REFERENCES

1. PARCEL MAP FOR LOUANN BIANCHI FILED IN BOOK 117 OF PARCEL MAPS, AT PAGES 45 - 46, M.C.R.

LEGEND

- M.A.C.F.D. MAP OF ASSESSMENT AND COMMUNITY FACILITIES DISTRICT.
- C.F.D. COMMUNITY FACILITIES DISTRICT.
- M.C.R. MERCED COUNTY RECORDS.
- (R) RADIAL BEARING

