

**CITY CLERK STATEMENT**

FILED IN THE OFFICE OF THE CITY CLERK OF THE CITY OF MERCED THIS \_\_\_\_ DAY OF \_\_\_\_\_, 2022.

STEPHANIE R. DIETZ  
CITY CLERK  
CITY OF MERCED

I HEREBY CERTIFY THAT THE WITHIN MAP SHOWING PROPOSED BOUNDARIES OF CITY OF MERCED COMMUNITY FACILITIES DISTRICT NO. 2003-2 (SERVICES) OF THE CITY OF MERCED, ANNEXATION 20 (IMPROVEMENT AREA 46), IN THE CITY OF MERCED AND THE COUNTY OF MERCED, STATE OF CALIFORNIA, WAS APPROVED BY THE CITY COUNCIL OF THE CITY OF MERCED AT A REGULAR MEETING THEREOF, HELD ON THE DAY \_\_\_\_ OF \_\_\_\_ 2022, BY ITS RESOLUTION NO. \_\_\_\_\_.

STEPHANIE R. DIETZ  
CITY CLERK  
CITY OF MERCED

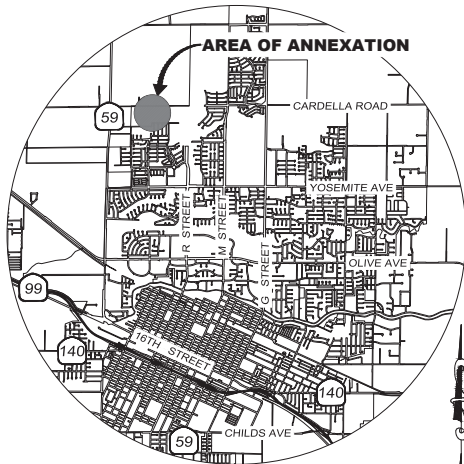
**CITY ENGINEER**

MICHAEL R. BELTRAN II, R.C.E 83916  
CITY ENGINEER  
CITY OF MERCED

**CITY SURVEYOR'S STATEMENT**

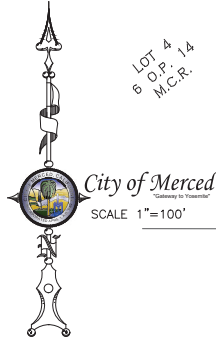
THIS MAP WAS PREPARED BY ME OR UNDER MY DIRECTION IN CONFORMANCE WITH THE LAND SURVEYOR'S ACT ON \_\_\_\_\_, 2022.

JOE M. CARDOSO, P.L.S. #8851



**VICINITY MAP**

NOT TO SCALE



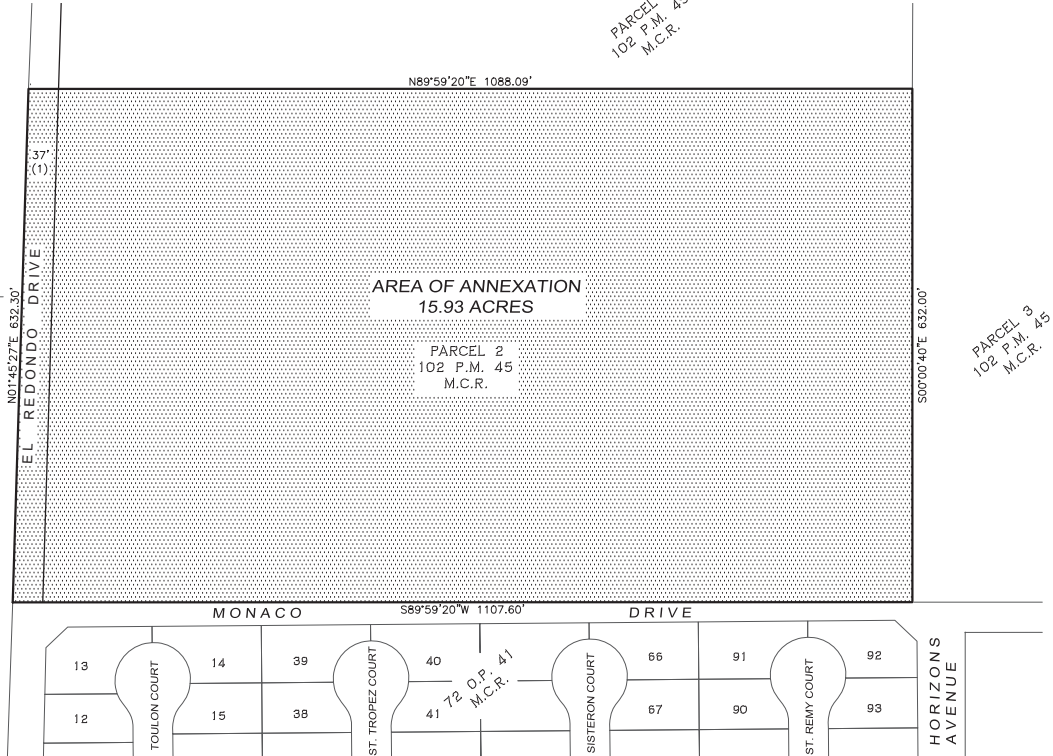
LOT 4  
6 O.P. 14  
M.C.R.

LOT 11  
6 O.P. 14  
M.C.R.

**COMMUNITY FACILITIES DISTRICT NO. 2003-2 (SERVICES)  
OF THE CITY OF MERCED  
ANNEXATION NO. 20  
(IMPROVEMENT AREA NO. 46)**

CITY OF MERCED, COUNTY OF MERCED  
FEBRUARY 23, 2022

STATE OF CALIFORNIA,  
SHEET 1 OF 1



PARCEL 1  
102 P.M. 45  
M.C.R.

PARCEL 3  
102 P.M. 45  
M.C.R.

**SAGE CREEK**

**RECORDER'S STATEMENT**

FILED THIS \_\_\_\_ DAY OF \_\_\_\_\_, \_\_\_\_\_, AT THE HOUR OF \_\_\_\_ O'CLOCK \_\_\_\_ M.,  
IN BOOK \_\_\_\_\_ OF MAPS OF ASSESSMENT AND COMMUNITY FACILITIES DISTRICT AT PAGES \_\_\_\_\_ IN THE  
OFFICE OF THE COUNTY RECORDER IN THE COUNTY OF MERCED, STATE OF CALIFORNIA.

MATT H. MAY  
MERCED COUNTY RECORDER  
BY: \_\_\_\_\_  
MERCED COUNTY DEPUTY RECORDER

DOCUMENT No. \_\_\_\_\_  
FEE: \_\_\_\_\_

**REFERENCES**

- 1. PARCEL MAP FOR YCH, RECORDED IN BOOK 102, OF PARCEL MAPS, PAGES 45-46, M.C.R.

**LEGEND**

- O.P. OFFICIAL PLATS
- P.M. PARCEL MAPS
- M.C.R. Merced County Records.

**BOOK \_\_\_\_\_ PAGE \_\_\_\_\_**

**ATTACHMENT 2**