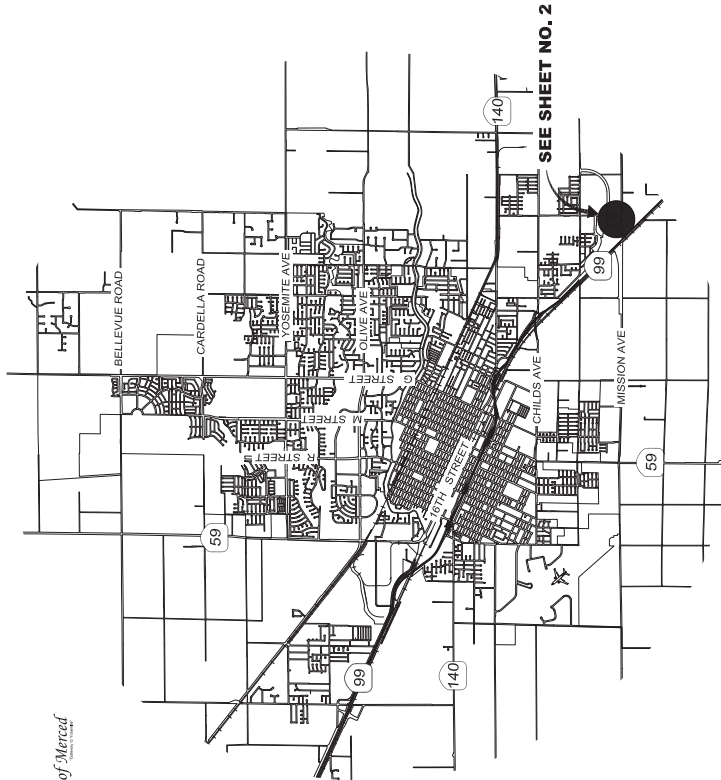


COMMUNITY FACILITIES DISTRICT NO. 2003-2 (SERVICES)  
OF THE CITY OF MERCED  
ANNEXATION NO. 23  
(IMPROVEMENT AREA NO. 49)

CITY OF MERCED, COUNTY OF MERCED  
OCTOBER 2022  
STATE OF CALIFORNIA,



**VICINITY MAP**

NOT TO SCALE

**CITY SURVEYOR'S STATEMENT**

THIS MAP WAS PREPARED BY ME OR UNDER MY DIRECTION IN CONFORMANCE WITH  
THE LAND SURVEYOR'S ACT ON \_\_\_\_\_, 202\_\_.

JOE M. CARDOSO, P.L.S. #8851

**CITY CLERK STATEMENT**

FILED IN THE OFFICE OF THE CITY CLERK OF THE CITY OF MERCED THIS \_\_\_\_\_ DAY OF \_\_\_\_\_, 202\_\_.

STEPHANIE R. DIETZ  
CITY CLERK  
CITY OF MERCED

I HEREBY CERTIFY THAT THE WITHIN MAP SHOWING PROPOSED BOUNDARIES OF CITY OF MERCED COMMUNITY FACILITIES DISTRICT NO. 2003-2 (SERVICES) OF THE CITY OF MERCED, ANNEXATION 20 (IMPROVEMENT AREA 48), IN THE CITY OF MERCED AND THE COUNTY OF MERCED, STATE OF CALIFORNIA, WAS APPROVED BY THE CITY COUNCIL OF THE CITY OF MERCED AT A REGULAR MEETING THEREOF, HELD ON THE DAY \_\_\_\_\_ OF \_\_\_\_\_, 202\_\_.

STEPHANIE R. DIETZ  
CITY CLERK  
CITY OF MERCED

**CITY ENGINEER**

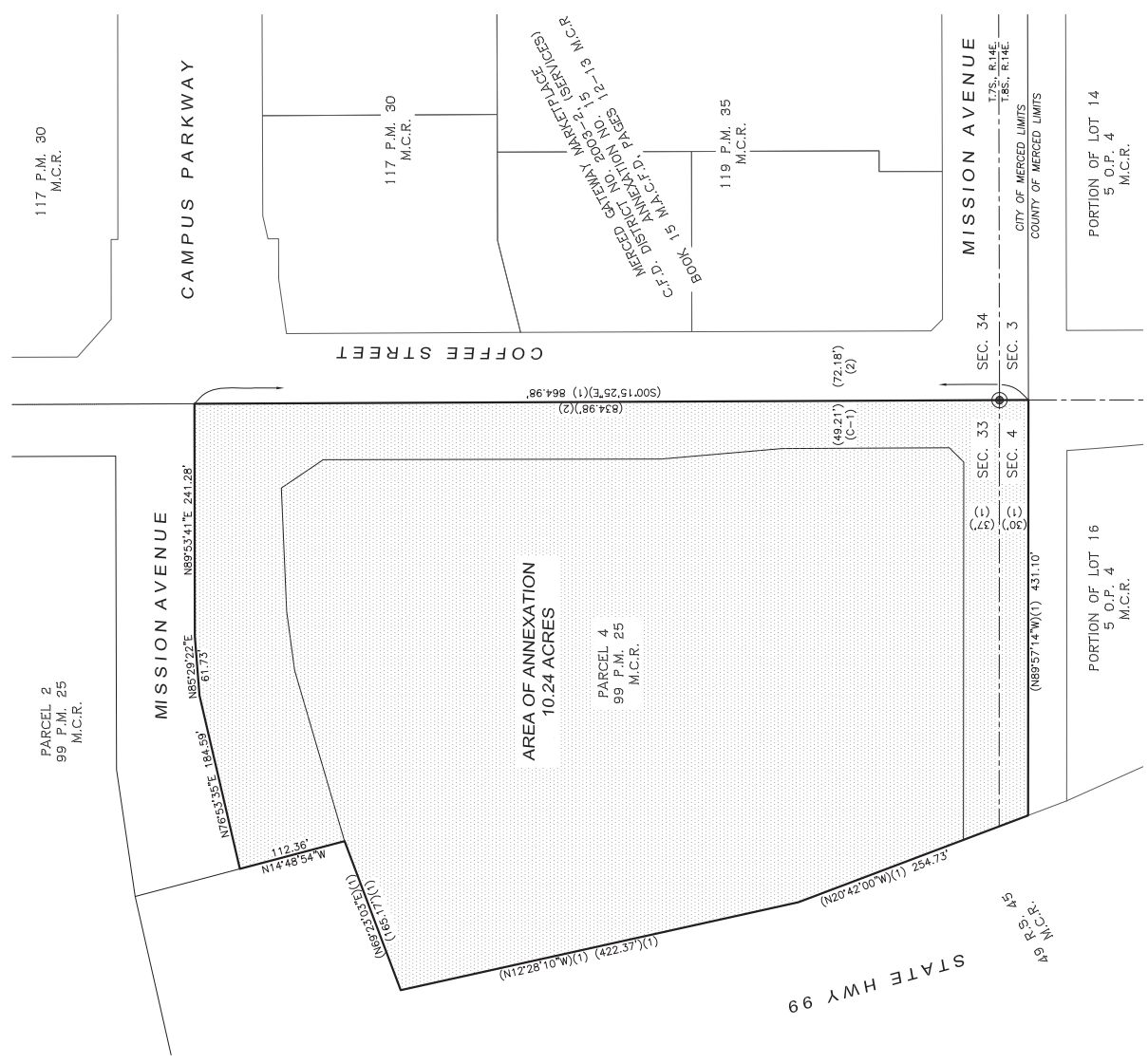
MICHAEL R. BELTRAN II, R.C.E. 83916  
CITY ENGINEER CITY OF MERCED

**RECORDER'S STATEMENT**

FILED THIS \_\_\_\_\_ DAY OF \_\_\_\_\_, AT THE HOUR OF \_\_\_\_\_ O'CLOCK \_\_\_\_\_ M.  
IN BOOK \_\_\_\_\_ OF MAPS OF ASSESSMENT AND COMMUNITY FACILITIES DISTRICT AT PAGES \_\_\_\_\_ IN THE  
OFFICE OF THE COUNTY RECORDER IN THE COUNTY OF MERCED, STATE OF CALIFORNIA.

MATT H. MAY  
MERCED COUNTY RECORDER  
DOCUMENT No. \_\_\_\_\_  
FEE: \_\_\_\_\_

BY: \_\_\_\_\_  
MERCED COUNTY DEPUTY RECORDER



**LEGEND**

- M.A.C.F.D. Map of Assessment and Community Facilities District.
- C.F.D. Community Facilities District
- M.C.R. Merced County Records.
- (C-1) Calculated per Reference Listed Herein.

**REFERENCES**

- (1) Parcel Map for L.J. Steiner, LLC, Recorded in Book 99, of Parcel Maps, at Pages 25-27, M.C.R.
- (2) Parcel Map for Merced Gateway Park Recorded in Book 117, of Parcel Maps, at Pages 30-36, M.C.R.

**COMMUNITY FACILITIES DISTRICT NO. 2003-2  
(SERVICES) OF THE CITY OF MERCED,  
ANNEXATION NO. 23  
(IMPROVEMENT AREA NO. 49)**

CITY OF MERCED, COUNTY OF MERCED  
OCTOBER 2022  
STATE OF CALIFORNIA  
SCALE 1"=80'

**CAMPUS PARKWAY PLAZA**

**BOOK** \_\_\_\_\_ **PAGE** \_\_\_\_\_