



# City of Merced

## Introduction to Redistricting

June 21, 2021

Dr. Jeff Tilton, Senior Consultant  
National Demographics Corporation

# Public Hearing 1 of 4

---

**TONIGHT**

**Redistricting Process**

**Rules and Goals**

**Neighborhoods/Communities of Interest**

**Mapping Tools**

**Advisory Commission?**

**Council Direction**

# Redistricting Process

---

Step	Description
<b>Two Initial Hearings</b> June 21 & August 2	Held prior to release of draft maps. Education and to solicit input on the communities in the Districts.
<b>Census Data Release</b> Mid/Late August	Census Bureau releases official 2020 Census population data.
<b>California Data Release</b> Early October 2021	California Statewide Database releases California's official 'prisoner-adjusted' 2020 redistricting data.
<b>Public Workshops</b> January 22	Two separate mapping tools workshops – morning and afternoon. (Additional workshops, based on demand.)
<b>Two Draft Map Hearings</b> February 7 & March 7	Two Public Hearings to discuss and revise the draft maps and to discuss the election sequence.
<b>Map Adoption</b> By April 17, 2022	Final map must be posted at least 7 days prior to adoption. Map adopted via ordinance.*

# Redistricting Rules and Goals

## 1. Federal Laws

**Equal Population**  
**Federal Voting Rights Act**  
**No Racial Gerrymandering**



## 2. California Criteria for Cities

**Geographically contiguous**  
**Undivided neighborhoods and “communities of interest”**  
(Socio-economic geographic areas that should be kept together)  
**Easily identifiable boundaries**  
**Compact**  
(Do not bypass one group of people to get to a more distant group of people)

### **Prohibited:**

“Shall not favor or discriminate against a political party.”

## 3. Other Traditional Redistricting Principles

**Minimize voters shifted to different election years**  
**Respect voters’ choices / continuity in office**  
**Future population growth**  
**Preserving the core of existing districts**

# Defining Neighborhoods

---

**1<sup>st</sup> Question: What is your neighborhood?**

**2<sup>nd</sup> Question: What are its geographic boundaries?**

**Examples of physical features defining a neighborhood boundary:**

- Natural neighborhood dividing lines, such as highway or major roads, rivers, canals and/or hills
- Areas around parks or schools
- Other neighborhood landmarks

**In the absence of public testimony, planning records and other similar documents may provide definition.**



# Beyond Neighborhoods: Defining Communities of Interest

---

## 1<sup>st</sup> Question: What defines your community?

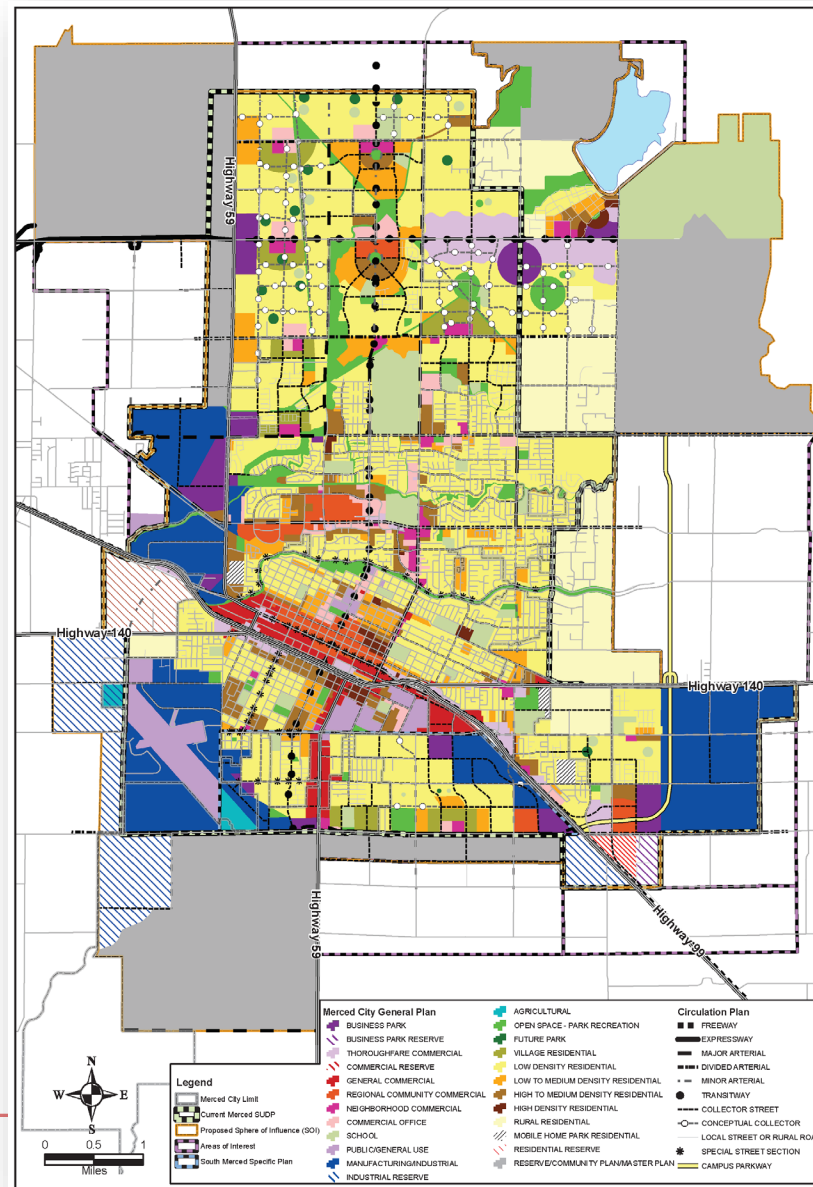
- Geographic Area, plus
- Shared issue or characteristic
  - Shared social or economic interest
  - Impacted by county policies
- Tell us “your community’s story”

## 2<sup>nd</sup> Question: Would this community benefit from being “included within a single district for purposes of its effective and fair representation”?

- Or would it benefit more from having multiple representatives?

Definitions of Communities of Interest may not include relationships with political parties, incumbents, or political candidates.

# Possible Neighborhoods / Communities



# Beyond Neighborhoods: Communities

---

Under the California Elections Code, “community of interest” has a very specific definition in the context of districting and redistricting cities and counties:

A “community of interest” is a population that shares common social or economic interests that should be included within a single district for purposes of its effective and fair representation.

Communities of interest do not include relationships with political parties, incumbents, or political candidates.

(emphasis added)

# Public Mapping and Map Review Tools

---

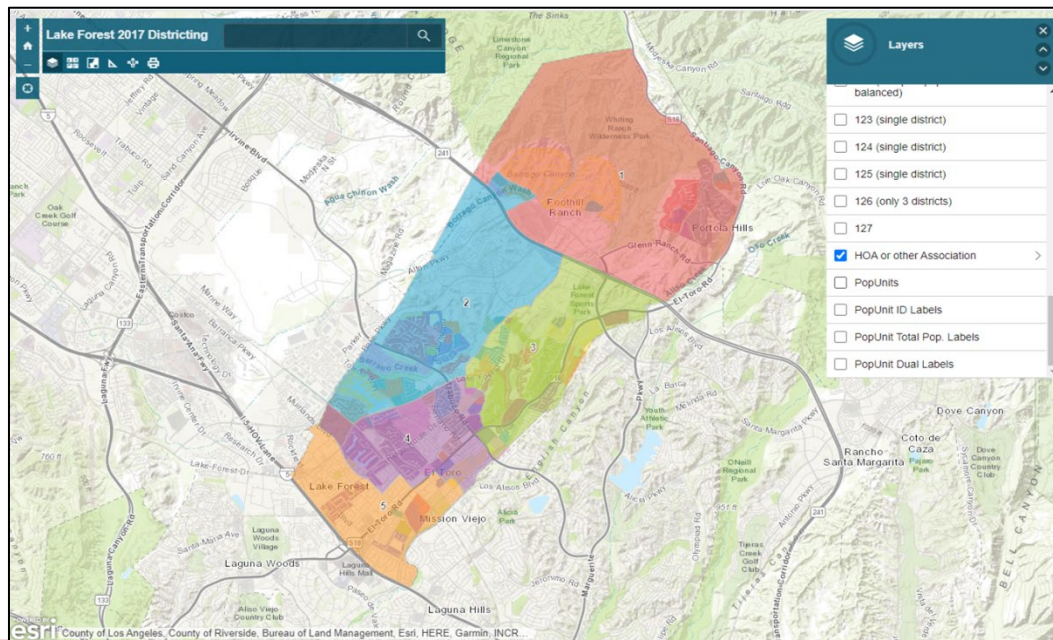
- **Different tools for different purposes**
- **Different tools for different levels of technical skill and interest**
  - Simple “review draft maps” tool
  - Easy-to-use “Draw your neighborhood” tool
  - Paper- and Excel-based simple “Draw a draft map” tools
  - Powerful, data-rich “Draw a draft map” tool

Whether you use the powerful (but complicated) online mapping tool, Excel, the paper kit, or just draw on a napkin, we welcome your maps!

# Simple Map Review Tool

## Online Interactive Review Map

- ESRI's "ArcGIS Online" – similar to Google Maps in ease of use
- Used to review, analyze and compare maps, not to create them
- Includes overlays of "community of interest" and other data



# Simple Map Drawing Tool

## Paper “Public Participation Kit”

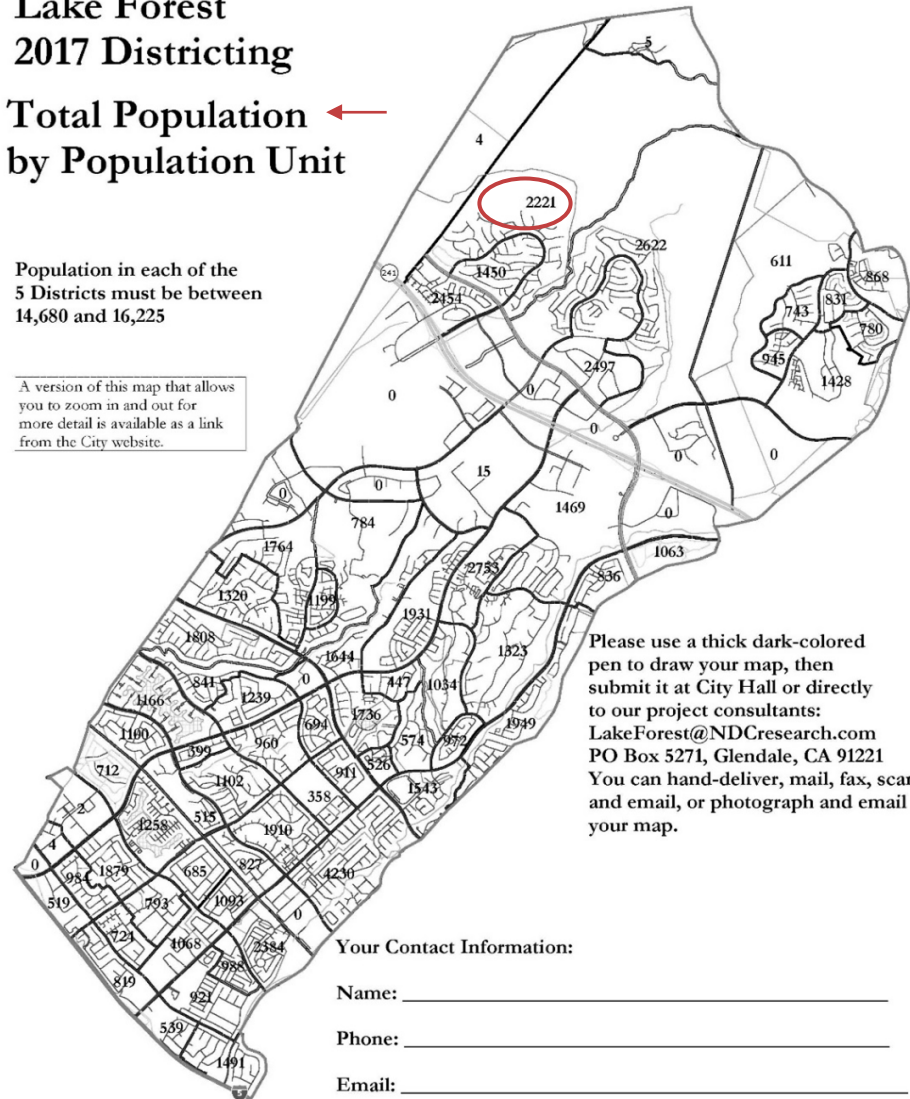
- For those without internet access or who prefer paper
- Total Population Counts only – no demographic numbers

### Lake Forest 2017 Districting

### Total Population ← by Population Unit

Population in each of the 5 Districts must be between 14,680 and 16,225

A version of this map that allows you to zoom in and out for more detail is available as a link from the City website.



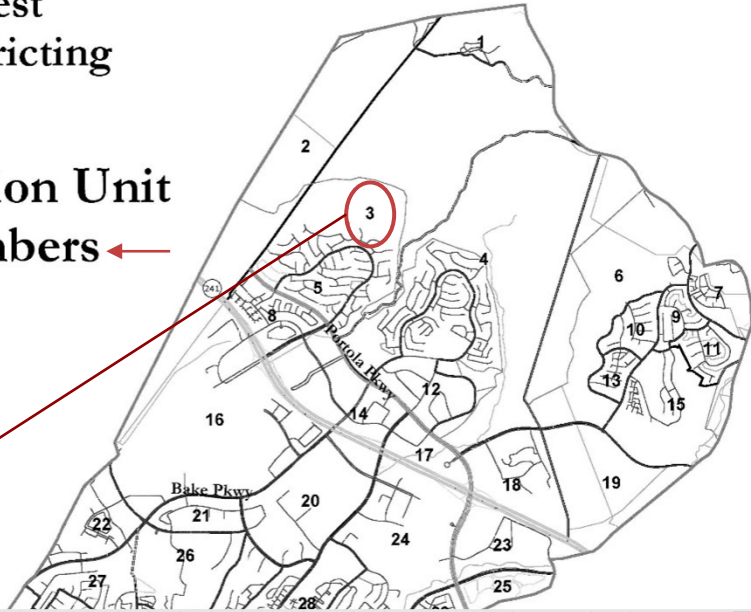
# Simple Map Drawing Tool + Excel Supplement

## “Public Participation Kit”

- For those who know Excel and do not wish to use online tools
- Adds CVAP data
- Excel does the math

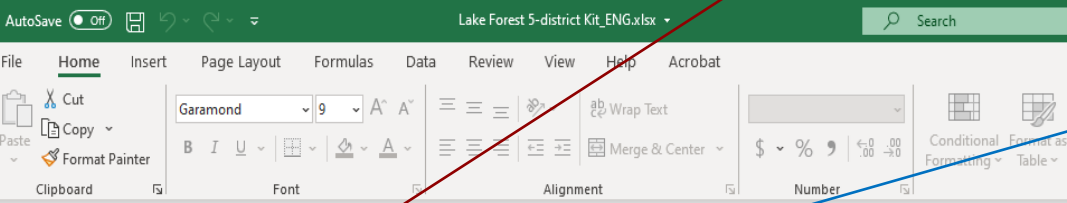
Lake Forest  
2017 Districting

Population Unit  
ID Numbers



		Counts							Percentages											
Group	Category	1	2	3	4	5	6	7	Unassigned	Total	1	2	3	4	5	6	7	Unassigned	Total	
Tot. Pop.		0	0	0	0	0	0	0	107,197	107,197	0	-100%	-100%	-100%	-100%	-100%	-100%	-100%	0	0.00%
Total Population		34,182	64,294	1,919	4,530	83,090	22,928	33,657	3,401	107,197	31%	60%	2%	4%	77%	21%	59%	2%	4%	32%
Total CVAP		0	0	0	0	0	0	0	18,936	18,936	0%	0%	0%	0%	0%	0%	0%	0%	0%	17%
Total Reg.		0	0	0	0	0	0	0	13,574	13,574	0%	0%	0%	0%	0%	0%	0%	0%	0%	12%

Dist	Unit	Tot. Pop.	Hisp	Whit	Blk	NH	Asn	total	Hisp	Whit	Blk	Asn	tot	Hisp	Whit	Blk	Asn	tot	latino	asn	fil	tot
1	1	1,216	642	557	18	15	873	397	442	12	831	390	441	0	0	574	195	7	3	245	63	
2	2	2,367	1,128	1,053	43	96	1,784	741	899	74	1,915	730	1,140	0	45	1,299	435	14	7	555	140	
3	3	1,643	768	278	42	25	1,036	741	236	15	400	235	145	0	20	505	286	3	4	161	73	
4	4	1,768	734	855	62	84	1,272	464	685	62	1,231	461	639	19	111	1,022	366	11	11	391	89	
5	5	2,001	209	1,655	14	79	1,639	144	1,392	64	1,511	88	1,337	12	38	1,776	146	46	7	1,069	67	
6	6	612	56	499	4	39	517	37	440	26	471	22	423	3	15	525	38	15	2	337	18	
7	7	1,753	1,180	501	70	10	1,945	767	124	10	780	335	440	0	0	777	378	7	4	241	70	

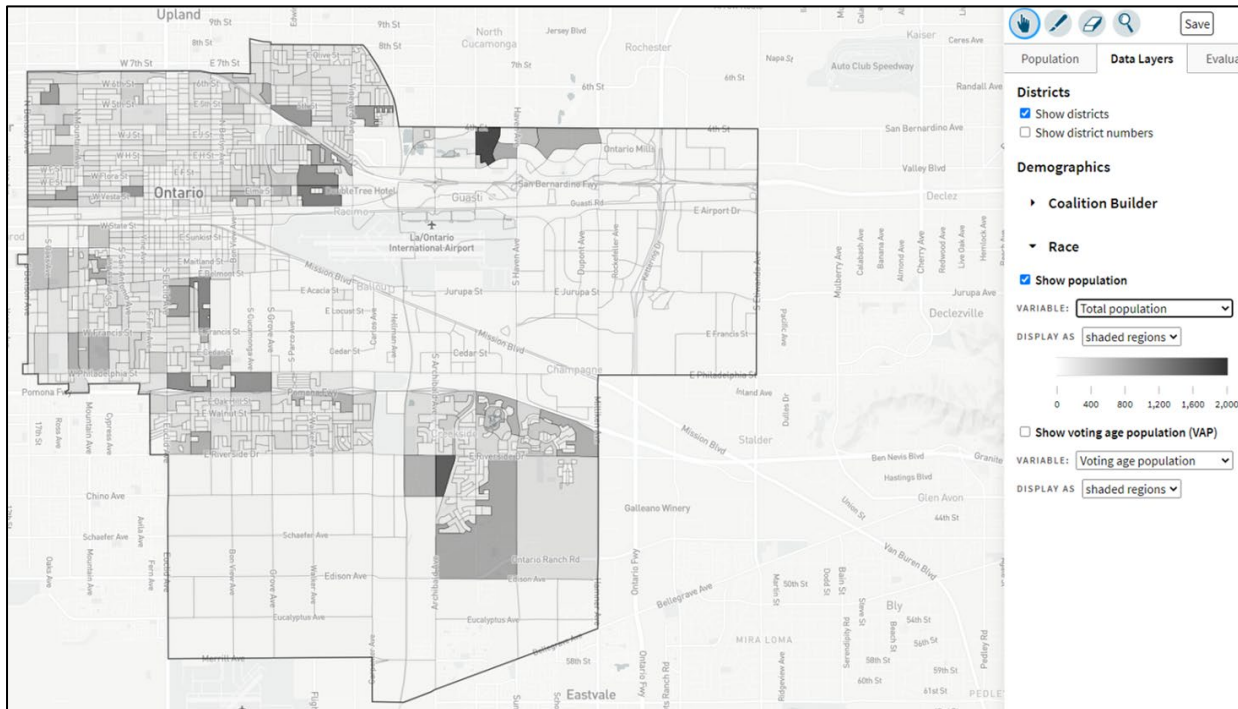


Dist	Unit	Tot. Pop.	Hisp	Whit	Blk	NH	Asn	total	Hisp	Whit	Blk	Asn	tot	Hisp	Whit	Blk	Asn	tot	latino	asn	fil	tot
1	1	1,216	642	557	18	15	873	397	442	12	831	390	441	0	0	574	195	7	3	245	63	
2	2	2,367	1,128	1,053	43	96	1,784	741	899	74	1,915	730	1,140	0	45	1,299	435	14	7	555	140	
3	3	1,643	768	278	42	25	1,036	741	236	15	400	235	145	0	20	505	286	3	4	161	73	
4	4	1,768	734	855	62	84	1,272	464	685	62	1,231	461	639	19	111	1,022	366	11	11	391	89	
5	5	2,001	209	1,655	14	79	1,639	144	1,392	64	1,511	88	1,337	12	38	1,776	146	46	7	1,069	67	
6	6	612	56	499	4	39	517	37	440	26	471	22	423	3	15	525	38	15	2	337	18	
7	7	1,753	1,180	501	70	10	1,945	767	124	10	780	335	440	0	0	777	378	7	4	241	70	

# DistrictR

## “Draw Your Community of Interest” focus

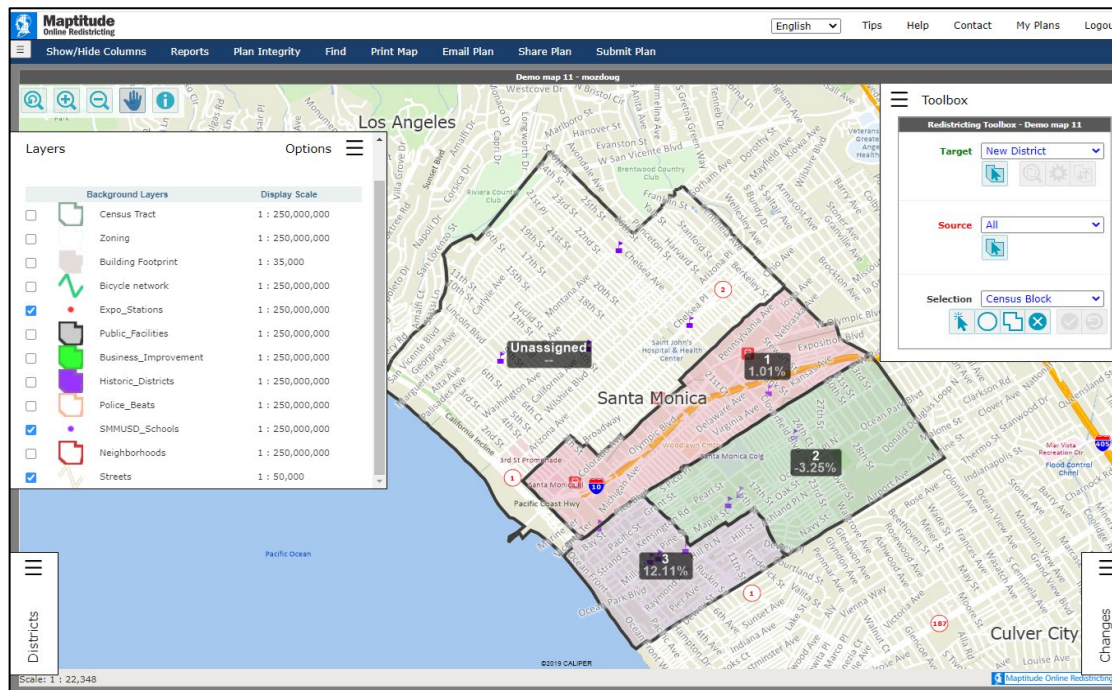
- Also includes simple district-mapping tool
- Only available in English
- Similar external options: [Representable.org](http://Representable.org), [DrawMyCACommunity.org](http://DrawMyCACommunity.org)



# Caliper's “Maptitude Online Redistricting”

## Full Database, Powerful Online Mapping Tool

- Powerful, common, data-rich online tool
- Six language options: English, Spanish, Portuguese, Vietnamese, Mandarin and Korean
- [Quick Start Guide](#)



# Advisory Commission?

---

- **Greater objectivity without self-interest**
- **Commissioners reach out to their networks**
- **Less intimidating atmosphere, more open discussion**
- **Commission instead of Council identifies “communities of interest”**
- **Commission refines draft maps, narrows to 2-3 maps, instead of taking time during a council meeting**

# Advisory Commission?

---

- Meetings are less accessible, often scheduled on the same days as school boards, planning commission, library board, other commissions and committees
- Public unaware of the commission and have the expectation to participate at council meetings during the pre-map and map drawing phase
- Requires public education campaign regarding the new commission and when, where, and how to participate
- Staff resources to establish and administer a new commission—separate record keeping system, noticing, website page and postings, agenda, minutes, oaths of office, conflict of interest filings, Brown Act compliance, AB1234 ethics training, public record act requests, responding to commissioners' questions and inquiries.

# Advisory Commission?

---

- **Staff resources to set up and staff meetings including meeting site prep, sound systems, audio recording, and minutes. Possible overtime for approximately two additional meetings per month.**
- **Census delay creates a time crunch. State prisoner-adjusted counts will be available in early October, then a three-week waiting period before staff or consultant can produce maps, then commission meets usually at least twice before choosing focus maps to present to council. The crunch is accentuated because of November and December holiday schedules.**

# ...or City Staff?

---

Step	Description
<b>Two Initial Hearings</b> June 21 & August 2	Held prior to release of draft maps. Education and to solicit input on the communities in the Districts.
<b>Census Data Release</b> Mid/Late August	Census Bureau releases official 2020 Census population data.
<b>California Data Release</b> Early October 2021	California Statewide Database releases California's official 'prisoner-adjusted' 2020 redistricting data.
<b>Public Workshops</b> January 22	Two separate mapping tools workshops – morning and afternoon. (Additional workshops, based on demand.)
<b>Two Draft Map Hearings</b> February 7 & March 7	Two Public Hearings to discuss and revise the draft maps and to discuss the election sequence.
<b>Map Adoption</b> By April 17, 2022	Final map must be posted at least 7 days prior to adoption. Map adopted via ordinance.*

# Public Hearing & Discussion

---

- **Advisory Commission or City Staff?**
- **What is your neighborhood and what are its boundaries?**
- **What other notable areas are in the City, and what are their boundaries?**
- **Any questions about the mapping tools?**

## SECOND PUBLIC HEARING (August 2)

**Discussion, then Action:**

**Vote on areas that meet each AB 849 definition:**

- “neighborhoods”
- “communities of interest . . . that should be included within a single district for purposes of its effective and fair representation.”