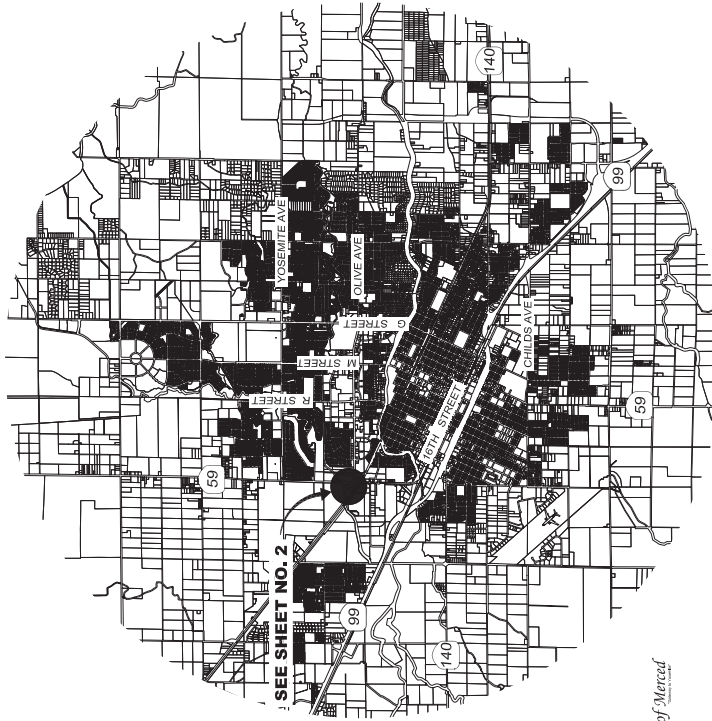


COMMUNITY FACILITIES DISTRICT NO. 2003-2 (SERVICES)
OF THE CITY OF MERCED
ANNEXATION NO. 19
(IMPROVEMENT AREA NO. 43)

CITY OF MERCED, COUNTY OF MERCED
OCTOBER 2021
STATE OF CALIFORNIA,



VICINITY MAP
NOT TO SCALE

CITY SURVEYOR'S STATEMENT

THIS MAP WAS PREPARED BY ME OR UNDER MY DIRECTION IN CONFORMANCE WITH THE LAND SURVEYOR'S ACT ON _____, 2021.

JOE M. CARDOSO, P.L.S. #8851

CITY CLERK STATEMENT

FILED IN THE OFFICE OF THE CITY CLERK OF THE CITY OF MERCED THIS

STEPHANIE R. DIETZ _____ DAY OF _____, 2021.
CITY CLERK CITY OF
MERCED

I HEREBY CERTIFY THAT THE WITHIN MAPS SHOWING PROPOSED BOUNDARIES OF CITY OF MERCED COMMUNITY FACILITIES DISTRICT, IN THE CITY OF MERCED AND THE COUNTY OF MERCED, STATE OF CALIFORNIA, WAS APPROVED BY THE CITY COUNCIL OF THE CITY OF MERCED AT A REGULAR MEETING THEREOF, HELD ON THE DAY OF _____, 2021, BY ITS RESOLUTION NO. _____.

STEPHANIE R. DIETZ _____
CITY CLERK
CITY OF MERCED

CITY ENGINEER

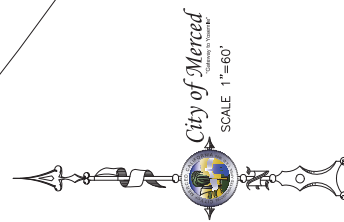
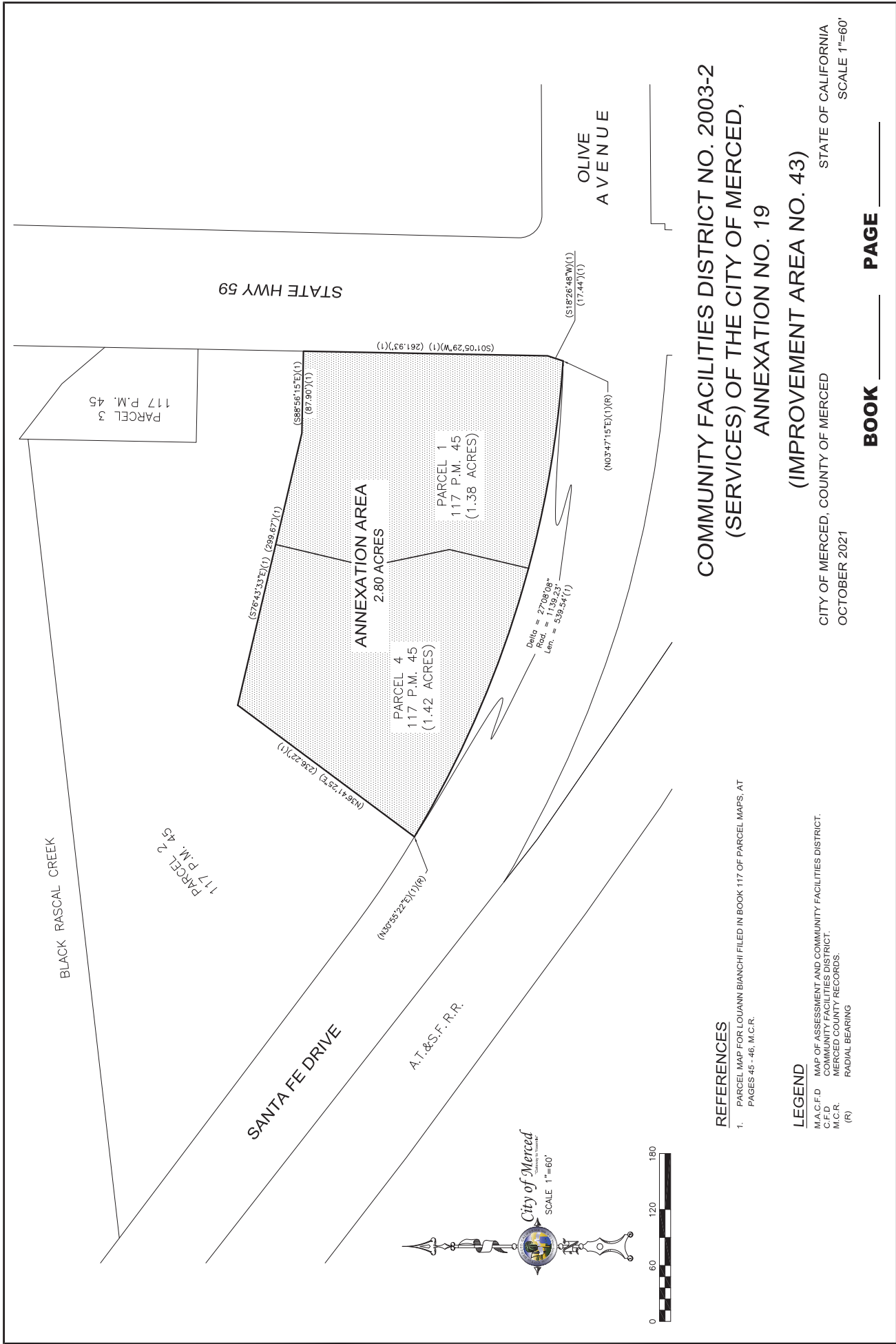
MICHAEL R. BELTRAN II, R.C.E. 83916 CITY
ENGINEER
CITY OF MERCED

RECORDER'S STATEMENT

FILED THIS _____ DAY OF _____, AT THE HOUR OF _____ O'CLOCK _____ M.,
IN BOOK _____ OF MAPS OF ASSESSMENT AND COMMUNITY FACILITIES DISTRICT AT PAGES _____
IN THE OFFICE OF THE COUNTY RECORDER IN THE COUNTY OF MERCED, STATE OF CALIFORNIA.

MATT H. MAY _____ DOCUMENT No. _____
MERCED COUNTY RECORDER FEE: _____

BY: _____
MERCED COUNTY DEPUTY RECORDER



**COMMUNITY FACILITIES DISTRICT NO. 2003-2
 (SERVICES) OF THE CITY OF MERCED,
 ANNEXATION NO. 19
 (IMPROVEMENT AREA NO. 43)**

REFERENCES
 1. PARCEL MAP FOR LOUANN BIANCHI FILED IN BOOK 117 OF PARCEL MAPS, AT PAGES 45 - 46, M.C.R.

LEGEND
 M.A.C.F.D. MAP OF ASSESSMENT AND COMMUNITY FACILITIES DISTRICT.
 C.F.D. COMMUNITY FACILITIES DISTRICT.
 M.C.R. MERCED COUNTY RECORDS.
 (R) RADIAL BEARING

CITY OF MERCED, COUNTY OF MERCED
 OCTOBER 2021

STATE OF CALIFORNIA
 SCALE 1"=60'

BOOK _____ **PAGE** _____