

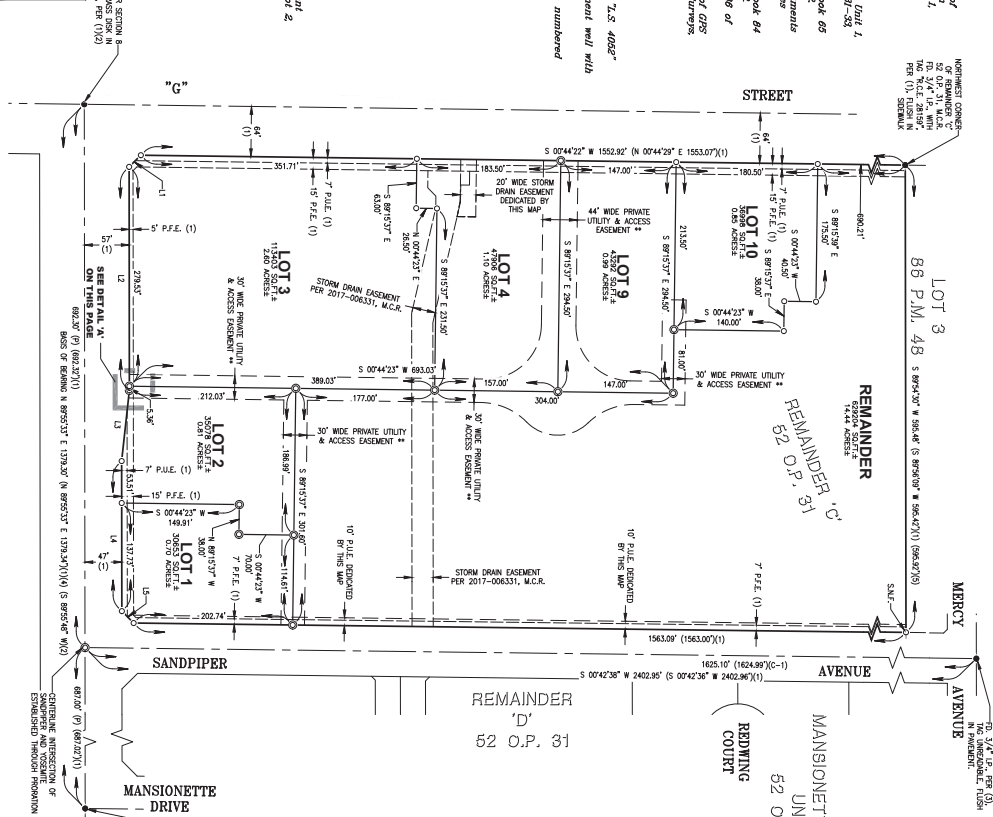
BASES OF RECORDS
 The Section 52 of Official Maps of the State of California, as amended, and the Section 4 of the Act of the Legislature of the State of California, approved on March 22, 1907, and recorded in Volume 62 of Official Maps at Page 21 to 25, M.C.R. 1907, as amended, as the basis of showing 5/8" utility survey.

- REFERENCES**
- (1) Assessor's Map for Mansionette Estates Unit 1, M.C.R. 52 of Official Maps at Pages 31-33.
 - (2) Parcel Map for Spaulding G., Wilson, Book 65 of Parcel Maps at Pages 42-44, M.C.R. 207-2 M.C.R.
 - (3) Parcel Map for West Real Estate Investments 207-2 M.C.R.
 - (4) Parcel Map for Spaulding G., Wilson, Book 64 of Parcel Maps at Pages 28-28, M.C.R.
 - (5) Parcel Map for Mercy Hospital, Book 86 of Parcel Maps at Pages 48-48, M.C.R.
 - (6) Record of Survey for City of Merced of ORS at Pages 38-41, M.C.R.

- LEGEND**
- Found monument as noted
 - Set 3/4" iron pipe with tag T.S. 4028"
 - Set 3/4" iron pipe in monument well with tag T.S. 4028"
 - () Reported as per field certain numbered
 - (M) Measured distance
 - (P) Proportion Distance
 - (R) Radial Bearing
 - PD. Found
 - IP. Iron Pipe
 - M.C.R. Merced County Records
 - N.T.S. Not to Scale
 - O.P. Official Plat
 - P.M. Parcel Map
 - P.F.E. Public Facility Assessment
 - P.U.R. Searched, Nothing Found
 - S.M.P. Survey Boundary

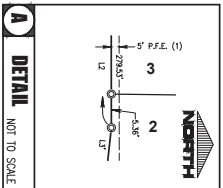
MAP NOTES
 ** The Private Utility and Access Easement Lot 2, Lot 3 and Lot 4, Lot 10 and the Remainder Lot.

GOLDEN VALLEY
 ENGINEERING & SURVEYING
 405 W. 19th Street • P.O. Box 348 • Mendocino, CA 95640
 Phone (709) 722-2300 • Fax (709) 722-2304
 Job No. 19250 F.B. 237 Pg. 46-42



LINE TABLE

LINE #	DIRECTION	LENGTH
L1	S44.00°E 216.0'	4(0'00")
L2	N89.50°S 216.0'	4(0'00")
L3	S30.40°E 96.0'	4(0'00")
L4	N89.50°S 96.0'	4(0'00")
L5	S45.00°E 216.0'	4(0'00")



TO: 3/4" I.P. with TAG
 40-21" IN DIAMETER
 40-21" ON FILE IN THE
 SURVEYOR'S OFFICE

YOSEMITE CROSSING PHASE I
 MAJOR SUBDIVISION No. 5382
 BRING A SUBDIVISION OF REMAINDERS C AS SHOWN ON ATTACHED MAP FOR MANSIONETTE ESTATES UNIT 1, RECORDED IN VOLUME 62 OF OFFICIAL MAPS AT PAGES 21 TO 25, MERCED COUNTY RECORDS, LIVING IN SECTION 6, TOWNSHIP 4 EAST, RANGE 12 NORTH, BASIN & MENDOCINO COUNTY OF MENDOCINO, STATE OF CALIFORNIA.

SHEET 3 OF 4
 SEPTEMBER 2020
 SCALE: 1"=80'

BASES OF RECORDS
 The boundary lines of Section 8, and Centerline of Section line of Section 9, and Centerline of Section line of Section 10, as shown on State Control Map of Merced County, California, recorded in Volume 52 of Official Plates at Pages 27 to 33, M.C.R. are used as the basis of bearing for this survey.

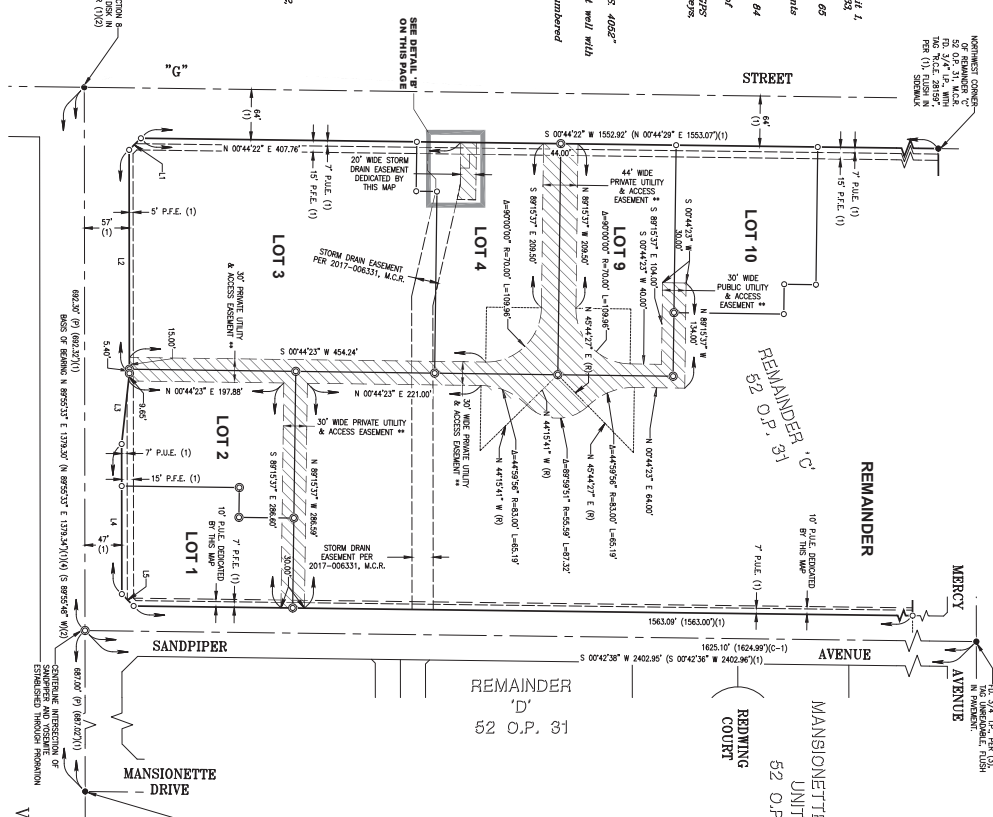
- REFERENCES**
- (1) Amended Map for Mansionette Estates Unit 1, M.C.R. 52 of Official Plates at Pages 31-33.
 - (2) Parcel Map for Spalding G. Wilson, Book 65 of Parcel Maps at Pages 42-44, M.C.R.
 - (3) Parcel Map for W&J Real Estate Investments 207-2, M.C.R.
 - (4) Parcel Map for Spalding G. Wilson, Book 64 of Parcel Maps at Pages 28-28, M.C.R.
 - (5) Parcel Map for Mercy Hospital, Book 86 of Parcel Maps at Pages 48-48, M.C.R.
 - (6) Record of Survey for C.H. & M. of GRS at Pages 38-41, M.C.R.

- LEGEND**
- Found monument as noted
 - Set 3/4" iron pipe with tag T.S. 4028"
 - Set 1/4" iron pipe in monument well with tag T.S. 4028"
 - () Approximate 3rd party record numbered
 - (M) Measured distance
 - (P) Proportion Distance
 - (R) Radial bearing
 - PD Found
 - M.C.R. Merced County Records
 - N.T.S. Not to Scale
 - O.P. Official Plate
 - P.M. Parcel Map
 - P.U.E. Public Utility Easement
 - P.U.R. Searched, Nothing Found
 - S.M.P. Survey Boundary

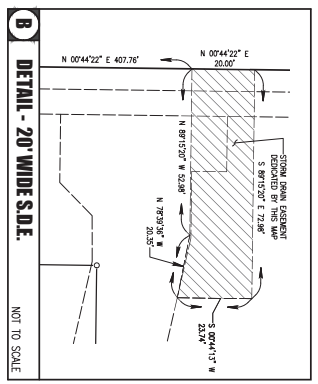
MAP NOTES
 ** The Private Utility and Access Easement Lot 4 of Lot 4 and Lot 9 and the Remainder Lot.

GOLDEN VALLEY
 ENGINEERING & SURVEYING
 405 W. 19th Street • P.O. Box 348 • Mendocino, CA 95640
 Phone (709) 722-3300 • Fax (709) 722-3394

MAP No. 19250 F.B. 237 Pg. 42-42



LINE #	DIRECTION	LENGTH
L1	S44°40'27"E	210' ± (K1700)
L2	N89°53'37"E	284.80'
L3	S33°44'07"E	96.50' ± (K1)
L4	N89°53'37"E	197.24'
L5	S49°10'57"E	213' ± (K1700)



TO: V.C. 10, 10th 10th
 T.S. 4028" IN MONUMENT
 410'-11" ON FILE AT THE
 MERCED COUNTY
 SURVEY OFFICE

VESTING TENTATIVE MAP No. 1314
MAJOR SUBDIVISION No. 5382
YOSEMITE CROSSING PHASE I
 BEING A SUBDIVISION OF REMAINDERS AS SHOWN ON AMENDED MAP FOR MANSIONETTE ESTATES UNIT 1, RECORDED IN VOLUME 52 OF OFFICIAL PLATES AT PAGES 27 TO 33, MERCED COUNTY RECORDS, LIVING IN SECTION 8, TOWNSHIP 4 SOUTH, RANGE 4 WEST, MOUNT DIABLO BASIN & MENDOCINO COUNTY OF MERCED, STATE OF CALIFORNIA IN THE CITY OF MERCED.

Sheet 4 of 4
 SCALE: 1" = 80'
 SEPTEMBER 2000