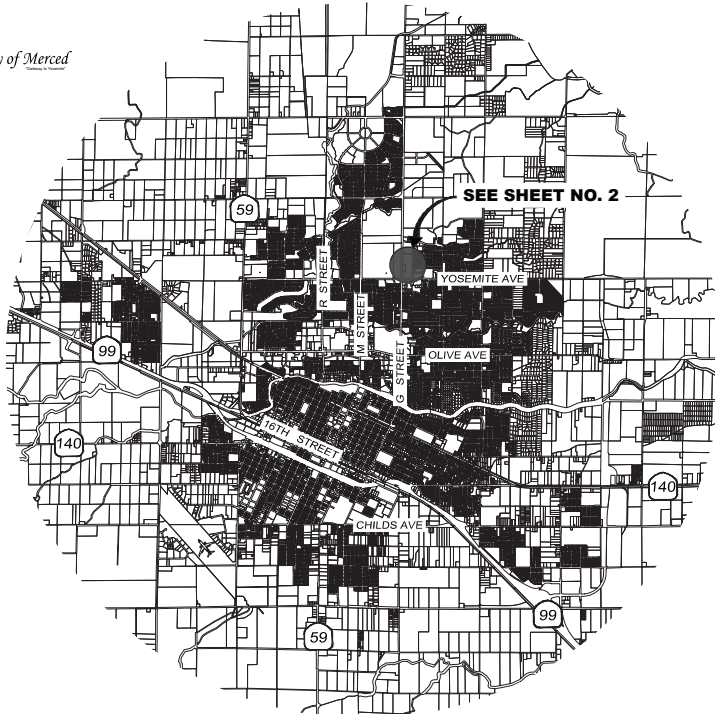


COMMUNITY FACILITIES DISTRICT NO. 2003-2 (SERVICES)  
OF THE CITY OF MERCED  
ANNEXATION NO. 17  
(IMPROVEMENT AREA NO. 45)

CITY OF MERCED, COUNTY OF MERCED

STATE OF CALIFORNIA,

MARCH 2021



**VICINITY MAP**

NOT TO SCALE

**CITY SURVEYOR'S STATEMENT**

THIS MAP WAS PREPARED BY ME OR UNDER MY DIRECTION IN CONFORMANCE WITH THE LAND SURVEYOR'S ACT ON \_\_\_\_\_, 2021.

JOE M. CARDOSO, P.L.S. #8851

**CITY CLERK STATEMENT**

FILED IN THE OFFICE OF THE CITY CLERK OF THE CITY OF MERCED THIS \_\_\_\_ DAY OF \_\_\_\_\_, 2021.

STEPHANIE R. DIETZ  
CITY CLERK CITY OF  
MERCED

I HEREBY CERTIFY THAT THE WITHIN MAPS SHOWING PROPOSED BOUNDARIES OF CITY OF MERCED COMMUNITY FACILITIES DISTRICT 10, IN THE CITY OF MERCED AND THE COUNTY OF MERCED, STATE OF CALIFORNIA, WAS APPROVED BY THE CITY COUNCIL OF THE CITY OF MERCED AT A REGULAR MEETING THEREOF, HELD ON THE DAY OF \_\_\_\_\_, 2021, BY IT'S RESOLUTION NO. \_\_\_\_\_.

STEPHANIE R. DIETZ  
CITY CLERK  
CITY OF MERCED

**CITY ENGINEER**

MICHAEL R. BELTRAN II, R.C.E 83916  
CITY ENGINEER  
CITY OF MERCED

**RECORDER'S STATEMENT**

FILED THIS \_\_\_\_ DAY OF \_\_\_\_\_, \_\_\_\_\_, AT THE HOUR OF \_\_\_\_ O'CLOCK \_\_\_\_ M., IN BOOK \_\_\_\_ OF MAPS OF ASSESSMENT AND COMMUNITY FACILITIES DISTRICT AT PAGES \_\_\_\_\_ IN THE OFFICE OF THE COUNTY RECORDER IN THE COUNTY OF MERCED, STATE OF CALIFORNIA.

MATT H. MAY  
MERCED COUNTY RECORDER

DOCUMENT No. \_\_\_\_\_  
FEE: \_\_\_\_\_

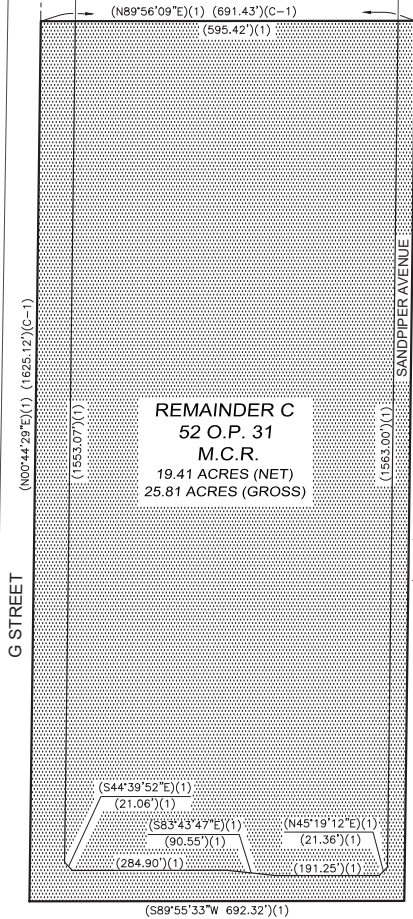
BY: \_\_\_\_\_  
MERCED COUNTY DEPUTY RECORDER

**BOOK** \_\_\_\_\_ **PAGE** \_\_\_\_\_

MERCY HOSPITAL  
C.F.D. DISTRICT NO. 2003-2,  
ANNEXATION NO. 7  
BOOK 13 M.A.C.F.D., PAGES 46-49 M.C.R.

LOT 3  
86 P.M. 48  
M.C.R.

V&S REAL ESTATE INVESTMENT LLC  
C.F.D. DISTRICT NO. 2003-2,  
ANNEXATION NO. 10  
BOOK 14 M.A.C.F.D., PAGES 20-21 M.C.R.



**REMAINDER C**  
**52 O.P. 31**  
**M.C.R.**  
19.41 ACRES (NET)  
25.81 ACRES (GROSS)

MERCED JUNIOR COLLEGE  
DISTRICT  
3 R.S. 35  
M.C.R.

BOBOLINK COURT

55 O.P. 12  
M.C.R.

NIGHTINGALE COURT

HUMMINGBIRD COURT

52 O.P. 31  
M.C.R.

REDWING COURT

CITY OF MERCED  
STORM DRAIN BASIN  
GRANT DEED  
2017-026954 M.C.R.

LOT D  
52 O.P. 31  
M.C.R.

YOSEMITE AVENUE

65 P.M. 25  
M.C.R.

92 P.M. 34  
M.C.R.

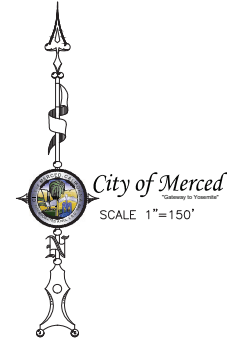
**YOSEMITE CROSSING**

**REFERENCES**

- CITY OF MERCED FINAL MAP No., 5233 AMENDED MAP FOR MANSIONETTE ESTATES UNIT 1, RECORDED IN VOLUME 52, OFFICIAL PLATS, AT PAGES 31-33, M.C.R.

**LEGEND**

M.A.C.F.D. MAP OF ASSESSMENT AND COMMUNITY FACILITIES DISTRICT.  
C.F.D. COMMUNITY FACILITIES DISTRICT.  
M.C.R. MERCED COUNTY RECORDS.



**COMMUNITY FACILITIES DISTRICT NO. 2003-2  
(SERVICES) OF THE CITY OF MERCED,  
ANNEXATION NO. 17  
(IMPROVEMENT AREA NO. 45)**

CITY OF MERCED, COUNTY OF MERCED  
MARCH 2021

STATE OF CALIFORNIA  
SCALE 1"=150'

**BOOK** \_\_\_\_\_ **PAGE** \_\_\_\_\_