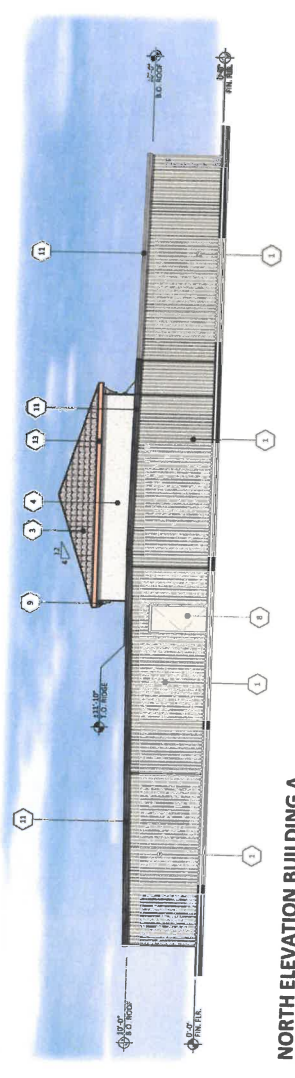
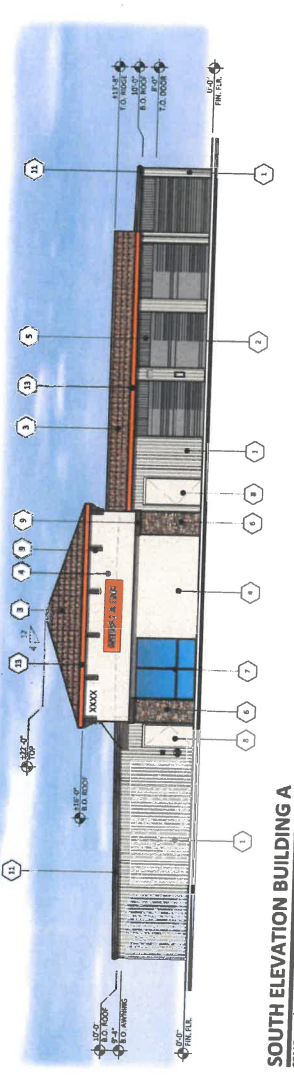


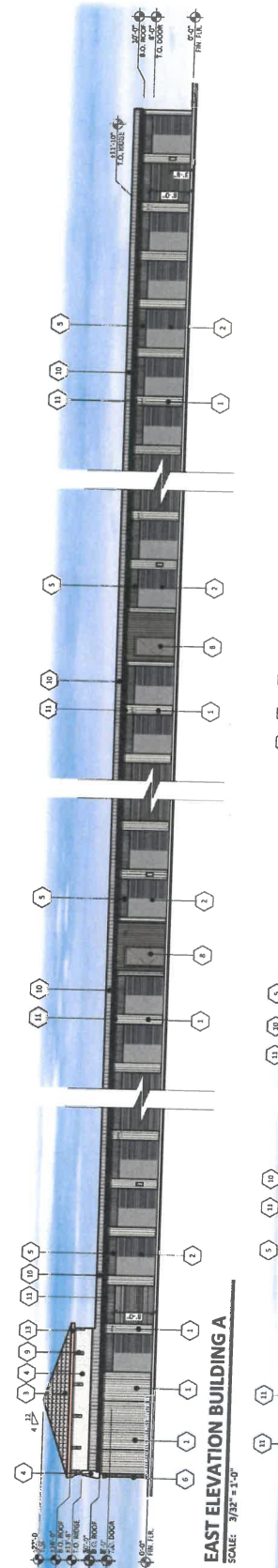
MATERIALS	
1	INSIDE METAL PANEL
2	EXTERIOR METAL PANEL
3	EXTERIOR ROOF OF DOORS
4	TRIM MATTE GRAY*
5	WOOD TILE
6	MARBLE TYPICAL COTTAGE TRIMMED
7	SHINY WILLOW
8	SHINY WILLOW SAND FINISH
9	GLASS
10	CULTURED STONE
11	COUNTERTOP
12	COUNTERTOP
13	ALUMINUM STORAGE FRAME
14	"BIRCH" ANODIZED FINISH*
15	TRIM DOORS
16	TRIM WALLS
17	"CASHMERE" SW 7571
18	"PILLOW" SW 7571
19	"PILLOW" SW 7571
20	"STANDING METAL SKIN ROOF" GALVALUME*
21	TRIM OF "GALVALUME"
22	METAL FINISH
23	METAL FINISH
24	EXTERIOR METAL PANEL
25	EXTERIOR METAL PANEL
26	EXTERIOR METAL PANEL
27	EXTERIOR METAL PANEL
28	EXTERIOR METAL PANEL
29	EXTERIOR METAL PANEL
30	EXTERIOR METAL PANEL
31	EXTERIOR METAL PANEL
32	EXTERIOR METAL PANEL
33	EXTERIOR METAL PANEL
34	EXTERIOR METAL PANEL
35	EXTERIOR METAL PANEL
36	EXTERIOR METAL PANEL
37	EXTERIOR METAL PANEL
38	EXTERIOR METAL PANEL
39	EXTERIOR METAL PANEL
40	EXTERIOR METAL PANEL
41	EXTERIOR METAL PANEL
42	EXTERIOR METAL PANEL
43	EXTERIOR METAL PANEL
44	EXTERIOR METAL PANEL
45	EXTERIOR METAL PANEL
46	EXTERIOR METAL PANEL
47	EXTERIOR METAL PANEL
48	EXTERIOR METAL PANEL
49	EXTERIOR METAL PANEL
50	EXTERIOR METAL PANEL
51	EXTERIOR METAL PANEL
52	EXTERIOR METAL PANEL
53	EXTERIOR METAL PANEL
54	EXTERIOR METAL PANEL
55	EXTERIOR METAL PANEL
56	EXTERIOR METAL PANEL
57	EXTERIOR METAL PANEL
58	EXTERIOR METAL PANEL
59	EXTERIOR METAL PANEL
60	EXTERIOR METAL PANEL
61	EXTERIOR METAL PANEL
62	EXTERIOR METAL PANEL
63	EXTERIOR METAL PANEL
64	EXTERIOR METAL PANEL
65	EXTERIOR METAL PANEL
66	EXTERIOR METAL PANEL
67	EXTERIOR METAL PANEL
68	EXTERIOR METAL PANEL
69	EXTERIOR METAL PANEL
70	EXTERIOR METAL PANEL
71	EXTERIOR METAL PANEL
72	EXTERIOR METAL PANEL
73	EXTERIOR METAL PANEL
74	EXTERIOR METAL PANEL
75	EXTERIOR METAL PANEL
76	EXTERIOR METAL PANEL
77	EXTERIOR METAL PANEL
78	EXTERIOR METAL PANEL
79	EXTERIOR METAL PANEL
80	EXTERIOR METAL PANEL
81	EXTERIOR METAL PANEL
82	EXTERIOR METAL PANEL
83	EXTERIOR METAL PANEL
84	EXTERIOR METAL PANEL
85	EXTERIOR METAL PANEL
86	EXTERIOR METAL PANEL
87	EXTERIOR METAL PANEL
88	EXTERIOR METAL PANEL
89	EXTERIOR METAL PANEL
90	EXTERIOR METAL PANEL
91	EXTERIOR METAL PANEL
92	EXTERIOR METAL PANEL
93	EXTERIOR METAL PANEL
94	EXTERIOR METAL PANEL
95	EXTERIOR METAL PANEL
96	EXTERIOR METAL PANEL
97	EXTERIOR METAL PANEL
98	EXTERIOR METAL PANEL
99	EXTERIOR METAL PANEL
100	EXTERIOR METAL PANEL



NORTH ELEVATION BUILDING A
SCALE: 1/8"=1'-0"



SOUTH ELEVATION BUILDING A
SCALE: 1/8"=1'-0"



EAST ELEVATION BUILDING A
SCALE: 3/32"=1'-0"



WEST ELEVATION BUILDING A
SCALE: 3/32"=1'-0"

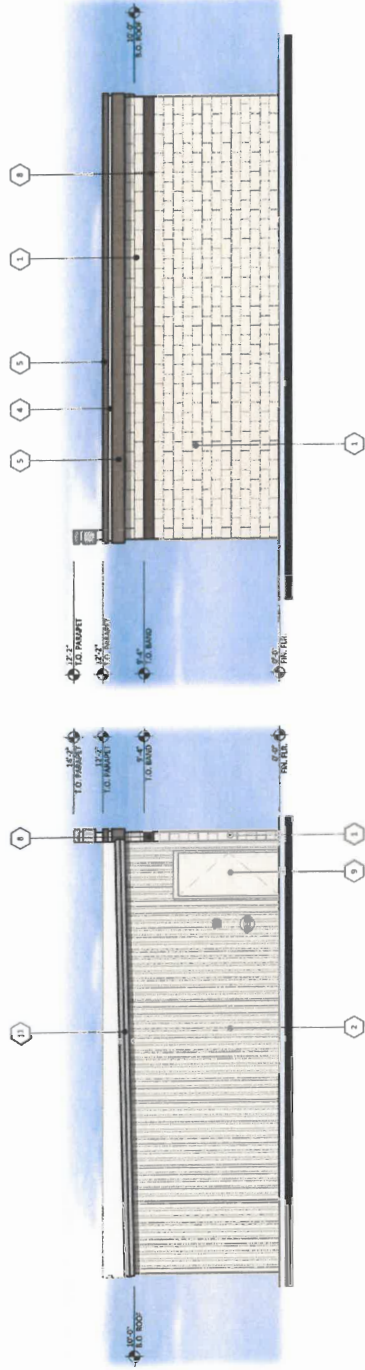
MERCED SECURITY STORAGE
1965 W. OLIVE AVENUE
MERCED, CA 95348
DATE: 02-28-2023 (PRELIMINARY)

EL-A
RKAA# 23003.50



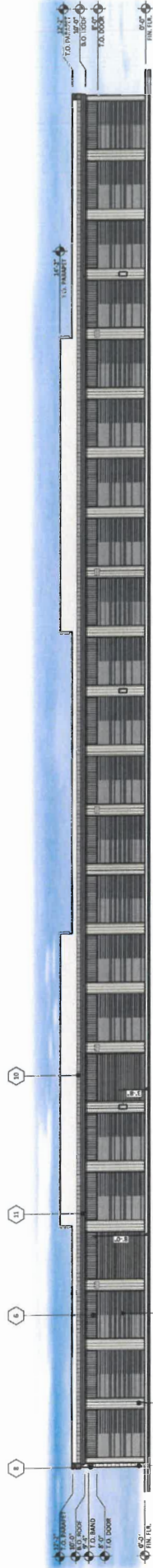
REGISTERED ARCHITECT
1965 W. OLIVE AVENUE
MERCED, CA 95348
TEL: 209.251.1111
WWW.RKAA.COM
© 2023 RKAA ARCHITECTS, INC.

MATERIALS	
1	SPRINKLER HEADS
2	"SALVADORA" SW 7971
3	"ALUMINUM"
4	"SILICETTE GRAY"
5	"SHERWIN WILLIAMS SAND FINISH"
6	"SHERWIN WILLIAMS SAND FINISH"
7	"SHERWIN WILLIAMS SAND FINISH"
8	"SHERWIN WILLIAMS SAND FINISH"
9	"SALVADORA" SW 7971
10	"SALVADORA" SW 7971
11	"SALVADORA" SW 7971
12	"SALVADORA" SW 7971
13	"SALVADORA" SW 7971
14	"SALVADORA" SW 7971
15	"SALVADORA" SW 7971
16	"SALVADORA" SW 7971
17	"SALVADORA" SW 7971
18	"SALVADORA" SW 7971
19	"SALVADORA" SW 7971
20	"SALVADORA" SW 7971
21	"SALVADORA" SW 7971
22	"SALVADORA" SW 7971
23	"SALVADORA" SW 7971
24	"SALVADORA" SW 7971
25	"SALVADORA" SW 7971
26	"SALVADORA" SW 7971
27	"SALVADORA" SW 7971
28	"SALVADORA" SW 7971
29	"SALVADORA" SW 7971
30	"SALVADORA" SW 7971
31	"SALVADORA" SW 7971
32	"SALVADORA" SW 7971
33	"SALVADORA" SW 7971
34	"SALVADORA" SW 7971
35	"SALVADORA" SW 7971
36	"SALVADORA" SW 7971
37	"SALVADORA" SW 7971
38	"SALVADORA" SW 7971
39	"SALVADORA" SW 7971
40	"SALVADORA" SW 7971
41	"SALVADORA" SW 7971
42	"SALVADORA" SW 7971
43	"SALVADORA" SW 7971
44	"SALVADORA" SW 7971
45	"SALVADORA" SW 7971
46	"SALVADORA" SW 7971
47	"SALVADORA" SW 7971
48	"SALVADORA" SW 7971
49	"SALVADORA" SW 7971
50	"SALVADORA" SW 7971
51	"SALVADORA" SW 7971
52	"SALVADORA" SW 7971
53	"SALVADORA" SW 7971
54	"SALVADORA" SW 7971
55	"SALVADORA" SW 7971
56	"SALVADORA" SW 7971
57	"SALVADORA" SW 7971
58	"SALVADORA" SW 7971
59	"SALVADORA" SW 7971
60	"SALVADORA" SW 7971
61	"SALVADORA" SW 7971
62	"SALVADORA" SW 7971
63	"SALVADORA" SW 7971
64	"SALVADORA" SW 7971
65	"SALVADORA" SW 7971
66	"SALVADORA" SW 7971
67	"SALVADORA" SW 7971
68	"SALVADORA" SW 7971
69	"SALVADORA" SW 7971
70	"SALVADORA" SW 7971
71	"SALVADORA" SW 7971
72	"SALVADORA" SW 7971
73	"SALVADORA" SW 7971
74	"SALVADORA" SW 7971
75	"SALVADORA" SW 7971
76	"SALVADORA" SW 7971
77	"SALVADORA" SW 7971
78	"SALVADORA" SW 7971
79	"SALVADORA" SW 7971
80	"SALVADORA" SW 7971
81	"SALVADORA" SW 7971
82	"SALVADORA" SW 7971
83	"SALVADORA" SW 7971
84	"SALVADORA" SW 7971
85	"SALVADORA" SW 7971
86	"SALVADORA" SW 7971
87	"SALVADORA" SW 7971
88	"SALVADORA" SW 7971
89	"SALVADORA" SW 7971
90	"SALVADORA" SW 7971
91	"SALVADORA" SW 7971
92	"SALVADORA" SW 7971
93	"SALVADORA" SW 7971
94	"SALVADORA" SW 7971
95	"SALVADORA" SW 7971
96	"SALVADORA" SW 7971
97	"SALVADORA" SW 7971
98	"SALVADORA" SW 7971
99	"SALVADORA" SW 7971
100	"SALVADORA" SW 7971

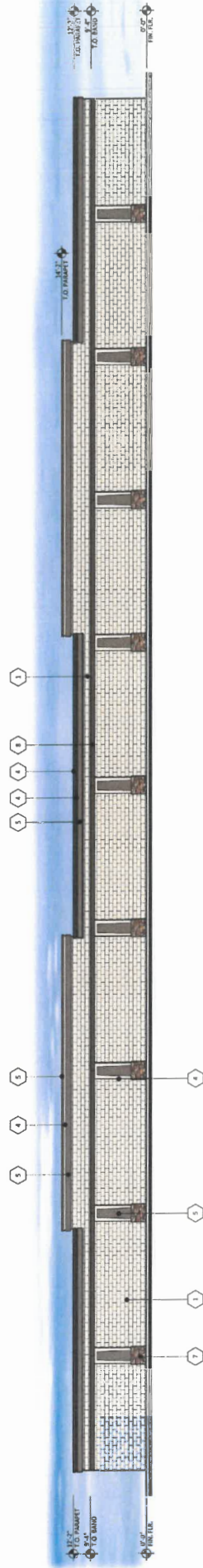


SOUTH ELEVATION BUILDING B
SCALE: 1/4" = 1'-0"

NORTH ELEVATION BUILDING B
SCALE: 1/4" = 1'-0"



EAST ELEVATION BUILDING B
SCALE: 1/8" = 1'-0"



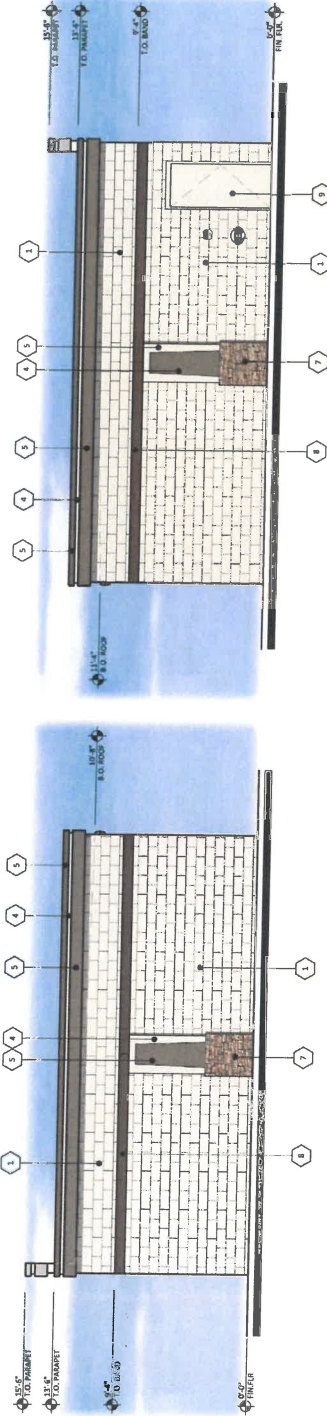
WEST ELEVATION BUILDING B
SCALE: 1/8" = 1'-0"

MERCED SECURITY STORAGE
1965 W. OLIVE AVENUE
MERCED, CA 95348
DATE: 02-28-2023 (PRELIMINARY)

EL-2
RKAAM 23003.50

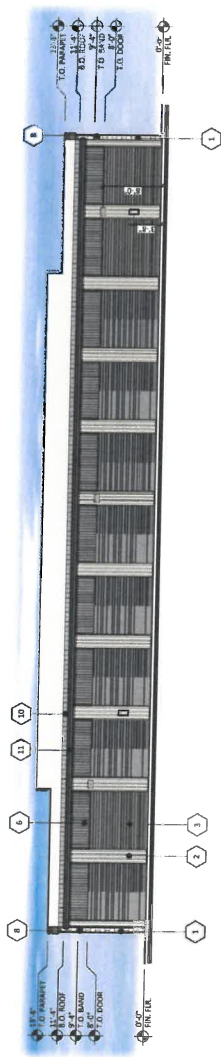


MATERIALS	
1	SMOOTH FACE CONCRETE
2	CONCRETE PANEL
3	ALUMINUM
4	SHIMMETTE GRAY
5	SHERWIN WILLIAMS SAND FINISH
6	SHERWIN WILLIAMS SAND FINISH
7	SHERWIN WILLIAMS SAND FINISH
8	SHIMMETTE GRAY
9	CELESTIAL LIMESTONE
10	SPILT GLAZE CHALK BOULE
11	SHIMMETTE GRAY
12	SHIMMETTE GRAY
13	STANDING METAL SEAM ROOF "GALVALUME"
14	TRIM CAP "GALVALUME"

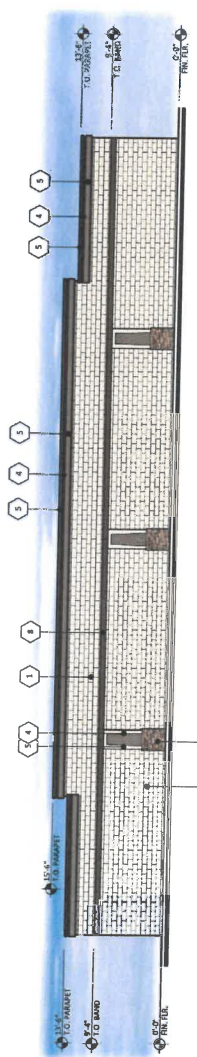


EAST ELEVATION BUILDING C
SCALE: 1/4" = 1'-0"

WEST ELEVATION BUILDING C
SCALE: 1/4" = 1'-0"



NORTH ELEVATION BUILDING C
SCALE: 1/8" = 1'-0"



SOUTH ELEVATION BUILDING C
SCALE: 1/8" = 1'-0"

MERCED SECURITY STORAGE
1965 W. OLIVE AVENUE
MERCED, CA 95348
DATE: 02-28-2023 (PRELIMINARY)

EL-3
RKAAR 23003.50



