

PASEO

BEING A PORTION OF THE SOUTHEAST QUARTER OF SECTION 31 AS SHOWN ON THE "MAP OF BELLA VISTA ESTATES UNIT NO. 1", FILED FOR RECORD ON OCTOBER 18, 1967, IN VOLUME 17 OF OFFICIAL PLATS, AT PAGES 47-49, MERCED COUNTY RECORDS, SITUATE IN TOWNSHIP 6 SOUTH, RANGE 14 EAST, MOUNT DIABLO BASE AND MERIDIAN.

CITY OF MERCED, COUNTY OF MERCED,
STATE OF CALIFORNIA



1165 Scenic Drive, Suite A, Modesto, CA 95350
Ph 209.571.1765 Fax 209.571.2466
odellengineering.com

LEGEND

- FOUND MONUMENT AS NOTED
- FOUND MONUMENT IN MONUMENT WELL AS NOTED
- ▲ FOUND GPS CONTROL POINT AS NOTED (R6)
- SET 3/4" (L.D.) x 24" I.P. TAGGED P.L.S. 7788
- SET 3/4" (L.D.) x 24" I.P. TAGGED P.L.S. 7788 FOR 3.00' WITNESS CORNER, MEASURED ALONG LOT LINE, WHERE NO LOT LINE OCCURS OR AT RADIAL BEARING AS INDICATED
- △ SET 3/4" (L.D.) x 24" IRON PIPE TAGGED P.L.S. 7788 FOR 3'x3' WITNESS CORNER. SEE WITNESS CORNER TABLE ON PAGE 6 OF 6 FOR BEARING AND DISTANCE FROM TRUE CORNER
- ⊥ SET 3/4" (L.D.) x 24" I.P. AT LOT CORNERS UNLESS NOTED OTHERWISE
- BOUNDARY LINE
- - - CENTERLINE
- · - · SECTION LINE
- ① CURVE REFERENCE NUMBER
- L LINE REFERENCE NUMBER
- [1] WITNESS CORNER REFERENCE NUMBER
- SFN SEARCHED, FOUND NOTHING, NOTING SET UNLESS NOTED OTHERWISE
- (L.D.) INSIDE DIAMETER
- I.P. IRON PIPE
- O.P. OFFICIAL PLAT
- P.M. PARCEL MAP
- P.U.E. PUBLIC UTILITY EASEMENT
- P.F.E. PUBLIC FACILITY EASEMENT
- U.E. USE EASEMENT
- M.C.R. MERCED COUNTY RECORDS
- P.G.&E. PACIFIC GAS AND ELECTRIC
- (M) MEASURED THIS SURVEY
- (R) RADIAL BEARING
- M.I.D. MERCED IRRIGATION DISTRICT

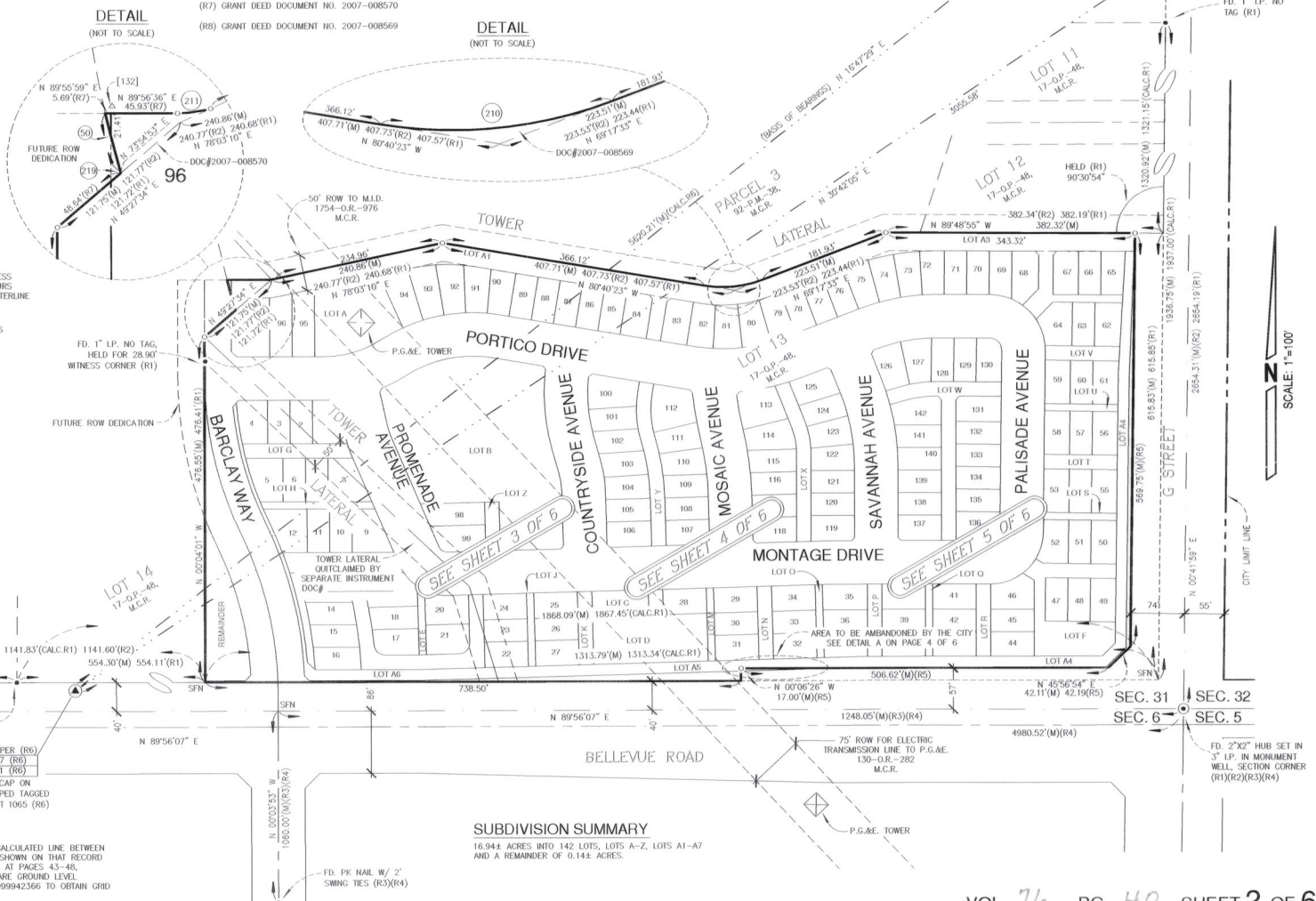
REFERENCES

- (R1) MAP OF BELLA VISTA ESTATES UNIT NO. 2: 17-0P-47, M.C.R.
- (R2) FINAL MAP OF BELLEVUE RANCH: 92-P.M.-38, M.C.R.
- (R3) BELLEVUE RANCH EAST-VILLAGE 16 LARGE LOT FINAL MAP: 61-0P-39, M.C.R.
- (R4) TRACT NO. 5270 BELLEVUE RANCH EAST - PHASE 1: 61-0P-21, M.C.R.
- (R5) BELLEVUE AND G STREET RIGHT-OF-WAY DEDICATION AND AGREEMENT: DOC# 2005-021374, M.C.R.
- (R6) RECORD OF SURVEY FOR GPS CONTROL NETWORK: 27-5-43, M.C.R.
- (R7) GRANT DEED DOCUMENT NO. 2007-008570
- (R8) GRANT DEED DOCUMENT NO. 2007-008569

NOTES:

1. ALL DISTANCES SHOWN HEREON ARE MEASURED UNLESS OTHERWISE NOTED.
2. ALL W.C. MEASURED ALONG LOT COMMON LINE, WHERE NO COMMON LOT LINE OCCURS W.C. WILL BE SET PERPENDICULAR TO STREET CENTERLINE OR ALONG RADIAL BEARING AS INDICATED UNLESS NOTED OTHERWISE.
3. ALL DISTANCES SHOWN HEREON ARE GROUND DISTANCES. TO CONVERT GROUND DISTANCE TO GRID DISTANCE MULTIPLY BY 0.99994448.
4. A PUBLIC UTILITY EASEMENT IS HEREBY DEDICATED BY THIS MAP ACROSS ALL OF LOTS G, I, K, C, N, P, R, F, T, V, A1, A2, A3.
5. A PUBLIC FACILITY EASEMENT IS HEREBY DEDICATED BY THIS MAP TO THE CITY OF MERCED ACROSS ALL OF LOTS A4, A5, A6, A7, A AND B.
6. AN EMERGENCY ACCESS EASEMENT IS HEREBY DEDICATED BY THIS MAP TO THE CITY OF MERCED ACROSS ALL OF LOT K.
7. SEE SHEET 6 OF 6 FOR ALL LINE TABLES, CURVE TABLES AND WITNESS CORNER TABLES.

GRID COORDINATES PER (R6)
N = 1959365.657 (R6)
E = 6570889.301 (R6)
FD. 2" ALUMINUM CAP ON
5/8" REBAR STAMPED TAGGED
RCE 15310, GPS PT 1063 (R6)



BASIS OF BEARINGS
THE BEARING OF N 1°47'29" E FOR THE CALCULATED LINE BETWEEN GPS POINT 1065 AND GPS POINT 1063 AS SHOWN ON THAT RECORD OF SURVEY FILED IN BOOK 27 OF SURVEYS, AT PAGES 43-48, MERCED COUNTY RECORDS, ALL DISTANCES ARE GROUND LEVEL DISTANCES AND MUST BE MULTIPLIED BY 0.9999442566 TO OBTAIN GRID DISTANCES.

SUBDIVISION SUMMARY
16,944 ACRES INTO 142 LOTS, LOTS A-Z, LOTS A1-A7 AND A REMAINDER OF 0.144 ACRES.

ATTACHMENT 3