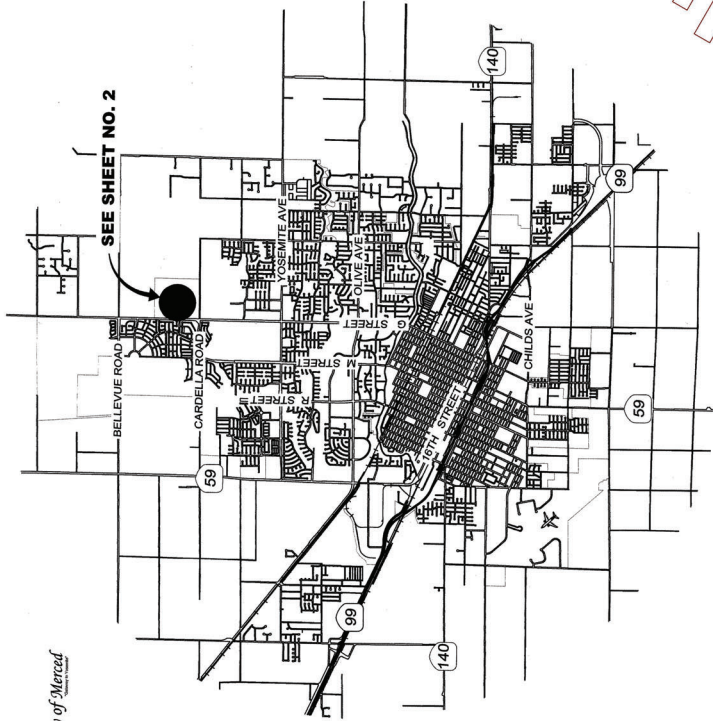


COMMUNITY FACILITIES DISTRICT NO. 2003-2 (SERVICES)  
OF THE CITY OF MERCED  
ANNEXATION NO. 22  
(IMPROVEMENT AREA NO. 48)

CITY OF MERCED, COUNTY OF MERCED

OCTOBER 2022

STATE OF CALIFORNIA



VICINITY MAP

NOT TO SCALE

CITY SURVEYOR'S STATEMENT

THIS MAP WAS PREPARED BY ME OR UNDER MY DIRECTION IN CONFORMANCE WITH THE LAND SURVEYOR'S ACT ON January 3, 2023.

*Joe M. Cardoso*  
JOE M. CARDOSO, P.L.S. #8851



CITY CLERK STATEMENT

FILED IN THE OFFICE OF THE CITY CLERK OF THE CITY OF MERCED THIS 14 DAY OF January, 2023.

*Stephanie R. Dietz*  
STEPHANIE R. DIETZ  
CITY CLERK  
CITY OF MERCED

I HEREBY CERTIFY THAT THE WITHIN MAP SHOWING PROPOSED BOUNDARIES OF CITY OF MERCED COMMUNITY FACILITIES DISTRICT NO. 2003-2 (SERVICES) OF THE CITY OF MERCED, ANNEXATION 22 (IMPROVEMENT AREA 48), IN THE CITY OF MERCED AND THE COUNTY OF MERCED, STATE OF CALIFORNIA, WAS APPROVED BY THE CITY COUNCIL OF THE CITY OF MERCED AT A REGULAR MEETING THEREOF, HELD ON THE DAY 14 OF January, 2023, BY ITS RESOLUTION NO. 2023-01.

*Stephanie R. Dietz*  
STEPHANIE R. DIETZ  
CITY CLERK  
CITY OF MERCED

CITY ENGINEER

*Matt H. May*  
MICHAEL R. BELTRAN II, R.C.E. 88916  
CITY ENGINEER CITY OF MERCED

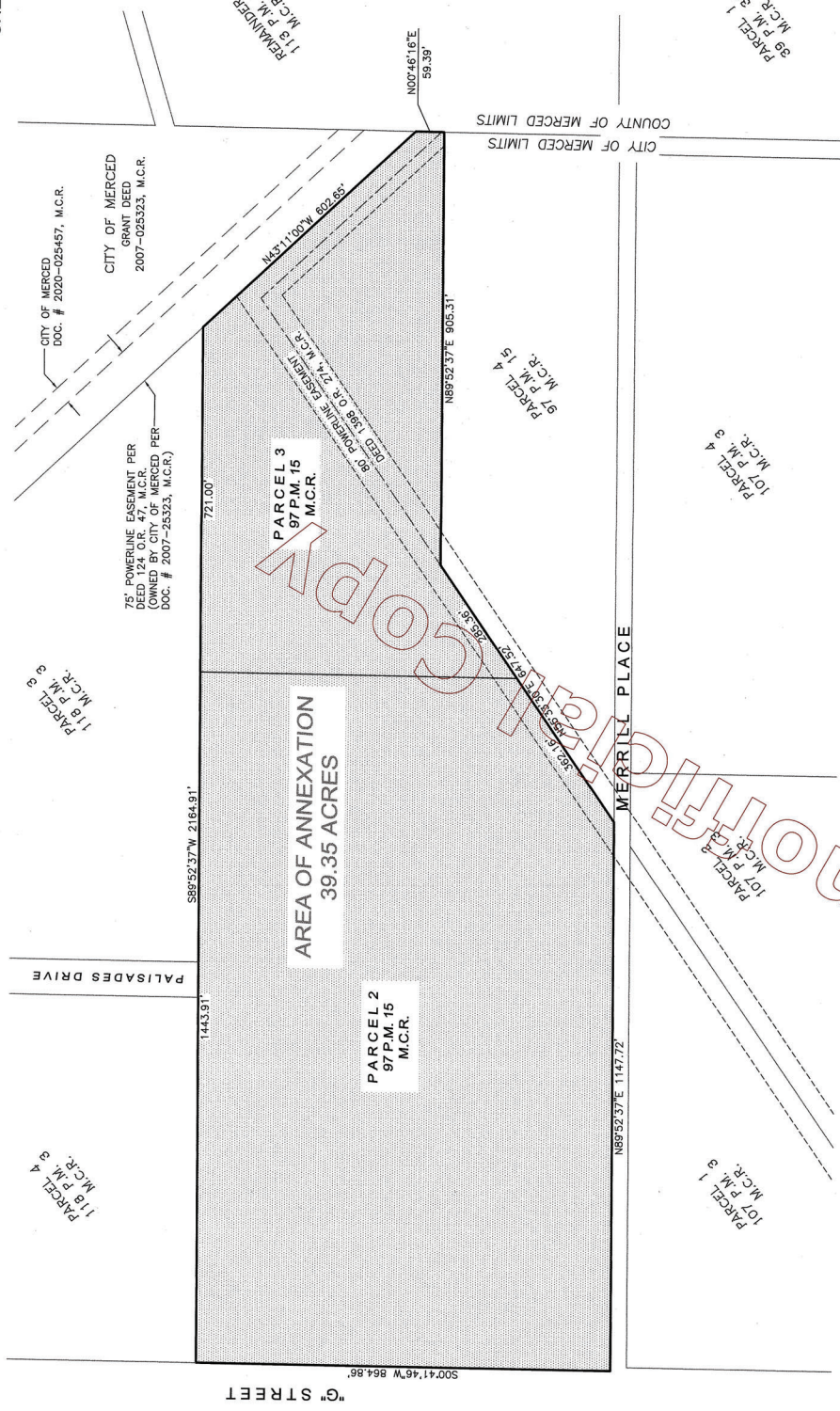
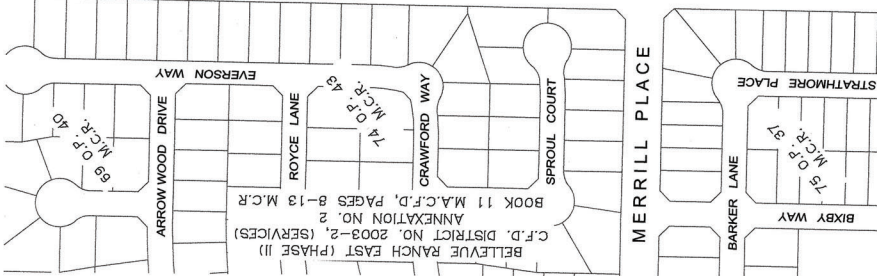


RECORDER'S STATEMENT

FILED THIS 5<sup>th</sup> DAY OF January, 2023, AT THE HOUR OF 9:45 O'CLOCK A.M., IN BOOK 15 OF MAPS OF ASSESSMENT AND COMMUNITY FACILITIES DISTRICT AT PAGES 29-30 IN THE OFFICE OF THE COUNTY RECORDER IN THE COUNTY OF MERCED, STATE OF CALIFORNIA.

MATT H. MAY  
MERCED COUNTY RECORDER  
BY: *Matt H. May*  
MERCED COUNTY DEPUTY RECORDER  
DOCUMENT No. 2023000251  
FEE: No Fee

Unofficial



**COMMUNITY FACILITIES DISTRICT NO. 2003-2  
(SERVICES) OF THE CITY OF MERCED,  
ANNEXATION NO. 22  
(IMPROVEMENT AREA NO. 48)**

**MERZOIAN ESTATES**

- REFERENCES**
- Parcel Map for Benber Property, Recorded in Volume 97, Parcel Maps, at Pages 15-17, M.C.R.

- LEGEND**
- M.A.C.F.D. Map of Assessment and Community Facilities District
  - C.F.D. Community Facilities District
  - M.C.R. Merced County Records



CITY OF MERCED, COUNTY OF MERCED  
OCTOBER 2022

STATE OF CALIFORNIA  
SCALE 1"=160'