

US DIGITAL DESIGNS	
Count	Name
1	EXTERNAL AMPLIFIER (60-100W)
1	G2 ATX STATION CONTROLLER
1	G2 HDTV REMOTE
11	G2 LED SPEAKER (G2-LVL-HC-70)
2	G2 MESSAGE REMOTE 2
3	G2 MESSAGE SIGN MINI (MS-G-M)
3	G2 MS ADAPTOR PLATE SINGLE (AP-S)
2	G2 OMNISTROBE SPEAKER
1	G2 UPS (G2-UPS)
3	MS-MNT-ART-L
2	PUSH BUTTON (BLACK)
2	PUSH BUTTON (RED)
9	ROOM REMOTE 2 (RR-2)
23	SPEAKER FLUSH MOUNT
3	SPEAKER WEATHER-PROOF

POE PORTS REQUIRED ON ATX & EXPANSION MODULE	
Count	Name
8	G2 PoE PORT REQUIRED

SYMBOL	DESCRIPTION
	G2 IO REMOTE
	G2 MESSAGE REMOTE 2
	G2 ROOM REMOTE 2
	G2 HDTV REMOTE
	G2 COLOR INDICATOR REMOTE
	PUSH BUTTON - RED
	PUSH BUTTON - BLACK
	G2 VIDEO DOOR STATION
	G2 LOCAL AREA REMOTE
	G2 STROBE LIGHT
	OEM TRANSFORMER
	G2 OMNIALERT STROBE SPEAKER
	G2 LED SPEAKER FLUSH MOUNT
	G2 LED SPEAKER METAL BOX
	SPEAKER WEATHER-PROOF
	SPEAKER FLUSH MOUNT
	SPEAKER METAL BOX
	G2 MESSAGE SIGN (MINI 12")
	G2 MESSAGE SIGN (STANDARD 24")
	G2 MESSAGE SIGN (EXTENDED 36")
	OEM FLAT PANEL MONITOR, XX" WITH MOUNT
	VOLUME CONTROL (CUSTOMER SUPPLIED)
	ADAPTER PLATE SINGLE
	ADAPTER PLATE DOUBLE
	ARTICULATING ARM MOUNT - LONG

INSTALLER NOTES:

- INSTALLER TO VERIFY WALL AND CEILING TYPE TO DETERMINE NEED FOR FLUSH OR SURFACE MOUNT INSTALLATION OF EQUIPMENT SPECIFIED.
- INSTALLER TO COORDINATE CONNECTION BETWEEN ATX STATION CONTROLLER'S LINE-LEVEL AUDIO OUTPUT AND (EXISTING) OWNER-FURNISHED HOUSE AUDIO SYSTEM (AMP), (IF APPLICABLE)
- INSTALLER TO PROVIDE CAT6 & 184 CABLES FROM ATX CONTROLLER TO CUSTOMER'S STATION RADIO FOR BACKUP.
- INSTALLER TO PROVIDE CAT6 CABLE FROM ATX CONTROLLER WAN OUTPUT TO CUSTOMER'S IN-STATION NETWORK.
- INSTALLER TO COORDINATE CONNECTION BETWEEN EXISTING STATION LIGHTING CONTROL SYSTEM AND RELAY OUTPUT FROM ATX STATION CONTROLLER OR IO REMOTE WITH OWNER, (IF APPLICABLE)
- VOLUME CONTROL TO BE PROVIDED BY OWNER OR INSTALLER IF SHOWN ON DRAWING.
- INSTALLER TO VERIFY AND CONSIDER LOCATION(S) OF NETWORK AND RADIO CONNECTIONS.

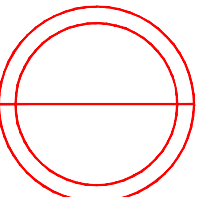
PoE = G2 ATX Power-over-Ethernet (PoE) ports 1...8 and G2 Expansion Module ports 1...12
A.n = G2 ATX Amplifier 1...4 | **EA.n** = G2 External Amplifier 1...n | **CH.n** = G2 Message Remote 2 Channel 1 or 2

NOTES:

- SEE ARCHITECTURAL SPECIFICATIONS FOR ALL ROUGH-IN AND INSTALLATION DETAILS.
- US DIGITAL DESIGNS DOES NOT SUPPLY BACK BOXES, CONDUITS, OR MOUNTING FASTENERS.
- US DIGITAL DESIGNS FIRE STATION ALERTING PLANS ARE DIAGRAMMATIC AND FOR QUOTING PURPOSES ONLY. DRAWING MAY NOT BE TO SCALE.
- PHOENIX G2 SYSTEM IS ABLE TO SIGNAL OWNER-FURNISHED SYSTEMS, (EXHAUST, LIGHT, GAS SHUT OFF, ETC.) BUT USDD DOES NOT SUPPLY THESE SYSTEMS AND CANNOT WARRANT OR SUPPORT ANY OF THEIR PERFORMANCE BEYOND THE TRANSMISSION OF RELAY SIGNAL TO THEM.

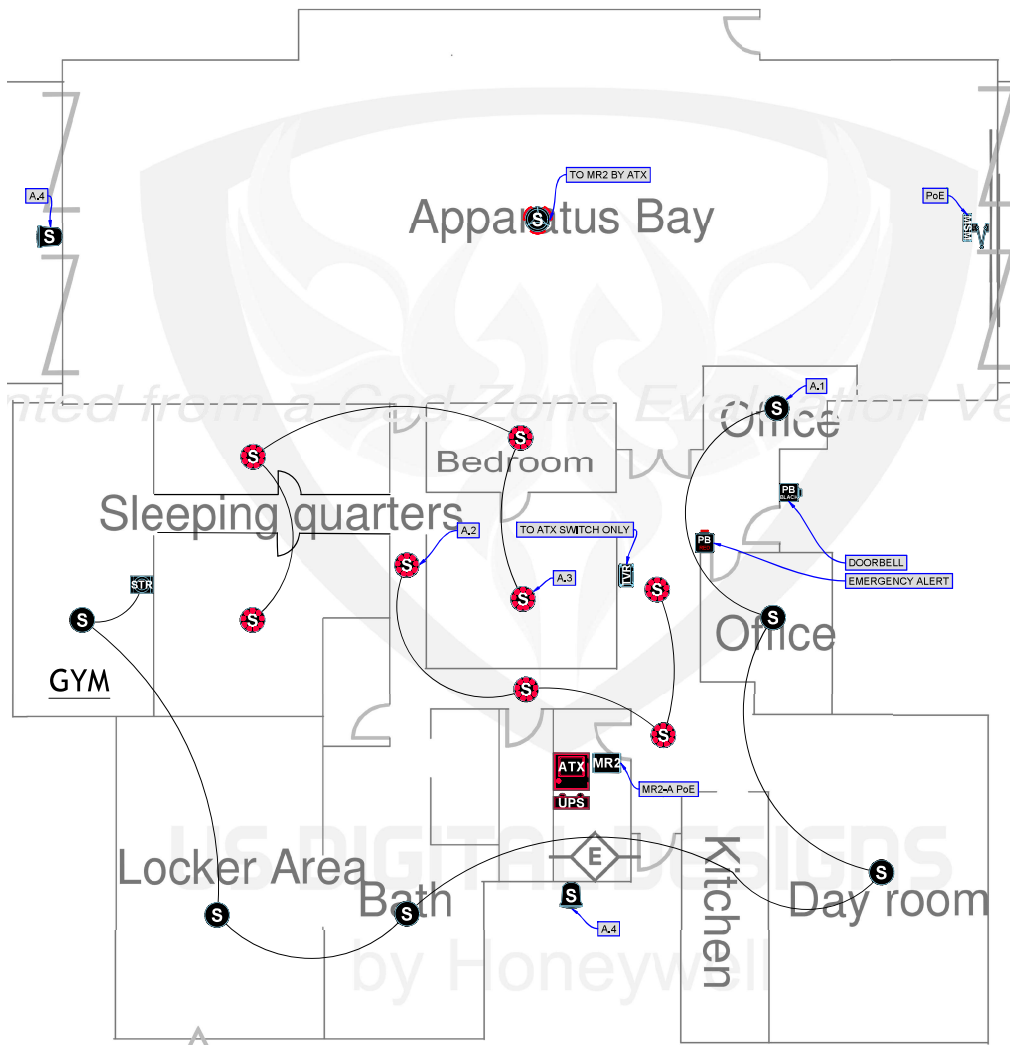
THIS DOCUMENT CONTAINS CONFIDENTIAL AND PROPRIETARY INFORMATION WHICH IS THE EXCLUSIVE PROPERTY OF US DIGITAL DESIGNS, INC. REPRODUCTION, DISTRIBUTION OR USE BY OTHERS, IN WHOLE OR IN PART, IS NOT PERMITTED WITHOUT THE WRITTEN AUTHORIZATION FROM US DIGITAL DESIGNS, INC.

SYMBOL	DESCRIPTION
	G2 ATX STATION CONTROLLER
	G2 EXPANSION MODULE
	G2 UNINTERRUPTIBLE POWER SUPPLY
	OEM AMPLIFIER



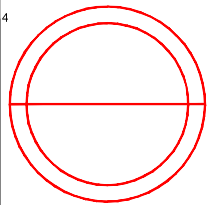
SIGNATURE REQUIRED
 END-USER APPROVES STATION DESIGN FOR PURPOSES OF OBTAINING QUOTE. INSTALLER CONFIRMS DESIGN ALIGNS WITH SITE CONDITIONS. (SPEAKER MOUNTING TYPE, ATX LOCATION ETC.)

project	MERCED FIRE DEPARTMENT, CA
building	FIRE STATION 51
address	99 E. 16th St., Merced, CA 95340
filename	USDD.CA_MRCDC.FS01.FSA.DWG
date	3/21/2024 - 12:07PM
design by	DWK



US DIGITAL DESIGNS	
Count	Name
1	G2 ATX STATION CONTROLLER
1	G2 HDTV REMOTE
8	G2 LED SPEAKER (G2-LVL-HC-70)
1	G2 MESSAGE REMOTE 2
1	G2 MESSAGE SIGN MINI (MS-G-M)
1	G2 MS ADAPTOR PLATE SINGLE (AP-S)
1	G2 OMNISTROBE SPEAKER
1	G2 STROBE LIGHT
1	G2 UPS (G2-UPS)
1	MS-MNT-ART-L
1	PUSH BUTTON (BLACK)
1	PUSH BUTTON (RED)
6	SPEAKER FLUSH MOUNT
2	SPEAKER WEATHER-PROOF

US DIGITAL DESIGNS	
Count	Name
2	G2 PoE PORT REQUIRED



SIGNATURE REQUIRED
 END-USER APPROVES STATION DESIGN FOR PURPOSES OF OBTAINING QUOTE. INSTALLER CONFIRMS DESIGN ALIGNS WITH SITE CONDITIONS. (SPEAKER MOUNTING TYPE, ATX LOCATION ETC.)

SYMBOL	DESCRIPTION
	G2 I/O REMOTE
	G2 MESSAGE REMOTE 2
	G2 ROOM REMOTE 2
	G2 HDTV REMOTE
	G2 COLOR INDICATOR REMOTE
	PUSH BUTTON - RED
	PUSH BUTTON - BLACK
	G2 VIDEO DOOR STATION
	G2 LOCAL AREA REMOTE
	G2 STROBE LIGHT
	CEM TRANSFORMER
	G2 OMNIALERT STROBE SPEAKER
	G2 LED SPEAKER FLUSH MOUNT
	G2 LED SPEAKER METAL BOX
	SPEAKER WEATHER-PROOF
	SPEAKER FLUSH MOUNT
	SPEAKER METAL BOX
	G2 MESSAGE SIGN (MINI 17")
	G2 MESSAGE SIGN (STANDARD 24")
	G2 MESSAGE SIGN (EXTENDED 36")
	CEM FLAT PANEL MONITOR, XX" WITH MOUNT
	VOLUME CONTROL (CUSTOMER SUPPLIED)
	ADAPTER PLATE SINGLE
	ADAPTER PLATE DOUBLE
	ARTICULATING ARM MOUNT - LONG

INSTALLER NOTES:
 1. INSTALLER TO VERIFY WALL AND CEILING TYPE TO DETERMINE NEED FOR FLUSH OR SURFACE MOUNT INSTALLATION OF EQUIPMENT SPECIFIED.
 2. INSTALLER TO COORDINATE CONNECTION BETWEEN ATX STATION CONTROLLER'S LINE-LEVEL AUDIO OUTPUT AND (EXISTING) OWNER-FURNISHED HOUSE AUDIO SYSTEM (AMP), (IF APPLICABLE)
 3. INSTALLER TO PROVIDE CAT6 & 184 CABLES FROM ATX CONTROLLER TO CUSTOMER'S STATION RADIO FOR BACKUP.
 4. INSTALLER TO PROVIDE CAT6 CABLE FROM ATX CONTROLLER WAN OUTPUT TO CUSTOMER'S IN-STATION NETWORK.
 5. INSTALLER TO COORDINATE CONNECTION BETWEEN EXISTING STATION LIGHTING CONTROL SYSTEM AND RELAY OUTPUT FROM ATX STATION CONTROLLER OR I/O REMOTE WITH OWNER, (IF APPLICABLE)
 6. VOLUME CONTROL TO BE PROVIDED BY OWNER OR INSTALLER IF SHOWN ON DRAWING.
 7. INSTALLER TO VERIFY AND CONSIDER LOCATION(S) OF NETWORK AND RADIO CONNECTIONS.

PoE = G2 ATX Power-over-Ethernet (PoE) ports 1...8 and G2 Expansion Module ports 1...12
A.n = G2 ATX Amplifier 1...4 | **EA.n** = G2 External Amplifier 1...n | **CH.n** = G2 Message Remote 2 Channel 1 or 2

NOTES:
 1. SEE ARCHITECTURAL SPECIFICATIONS FOR ALL ROUGH-IN AND INSTALLATION DETAILS.
 2. US DIGITAL DESIGNS DOES NOT SUPPLY BACK BOXES, CONDUITS, OR MOUNTING FASTENERS.
 3. US DIGITAL DESIGNS FIRE STATION ALERTING PLANS ARE DIAGRAMMATIC AND FOR QUOTING PURPOSES ONLY. DRAWING MAY NOT BE TO SCALE.
 4. PHOENIX G2 SYSTEM IS ABLE TO SIGNAL OWNER-FURNISHED SYSTEMS, (EXHAUST, LIGHT, GAS SHUT OFF, ETC.) BUT USDD DOES NOT SUPPLY THESE SYSTEMS AND CANNOT WARRANT OR SUPPORT ANY OF THEIR PERFORMANCE BEYOND THE TRANSMISSION OF RELAY SIGNAL TO THEM.

THIS DOCUMENT CONTAINS CONFIDENTIAL AND PROPRIETARY INFORMATION WHICH IS THE EXCLUSIVE PROPERTY OF US DIGITAL DESIGNS, INC. REPRODUCTION, DISTRIBUTION OR USE BY OTHERS, IN WHOLE OR IN PART, IS NOT PERMITTED WITHOUT THE WRITTEN AUTHORIZATION FROM US DIGITAL DESIGNS, INC.

SYMBOL	DESCRIPTION
	G2 ATX STATION CONTROLLER
	G2 EXPANSION MODULE
	G2 UNINTERRUPTIBLE POWER SUPPLY
	CEM AMPLIFIER

project **MERCED FIRE DEPARTMENT, CA**

building **FIRE STATION 52**

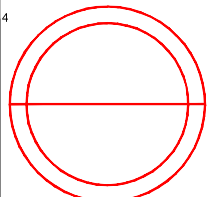
address **1400 FALCON WAY**

filename **USDD_CA_MRCDC.F552.FSA.DWG**

date **3/21/2024 - 12:07PM** (design by **DWK, JA**)



US DIGITAL DESIGNS
by Honeywell



SIGNATURE REQUIRED
END USER APPROVES STATION DESIGN FOR PURPOSES OF OBTAINING QUOTE. INSTALLER CONFIRMS DESIGN ALIGNS WITH SITE CONDITIONS. (SPEAKER MOUNTING TYPE, ATX LOCATION ETC.)

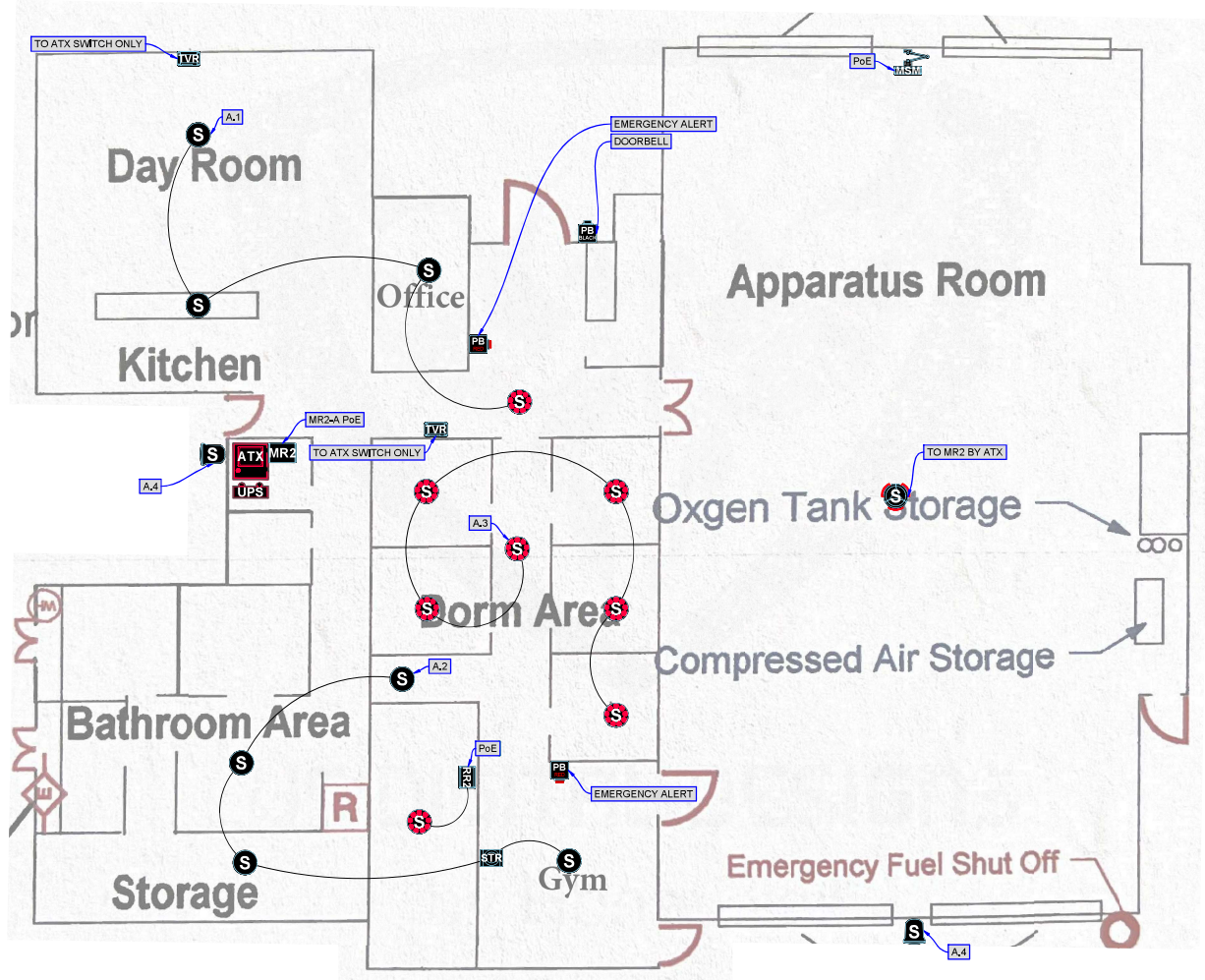
US DIGITAL DESIGNS	
Count	Name
1	G2 ATX STATION CONTROLLER
2	G2 HDTV REMOTE
8	G2 LED SPEAKER (G2-LVL-HC-70)
1	G2 MESSAGE REMOTE 2
1	G2 MESSAGE SIGN MINI (MS-G-M)
1	G2 MS ADAPTOR PLATE SINGLE (AP-S)
1	G2 OMNISTROBE SPEAKER
1	G2 STROBE LIGHT
1	G2 UPS (G2-UPS)
1	MS-MNT-ART-L
1	PUSH BUTTON (BLACK)
2	PUSH BUTTON (RED)
1	ROOM REMOTE 2 (RR-2)
7	SPEAKER FLUSH MOUNT
2	SPEAKER WEATHER-PROOF

POE PORTS REQUIRED ON ATX	
Count	Name
3	G2 PoE PORT REQUIRED

SYMBOL	DESCRIPTION
I/O	G2 IO REMOTE
MR2	G2 MESSAGE REMOTE 2
RR2	G2 ROOM REMOTE 2
HVR	G2 HDTV REMOTE
CHR	G2 COLOR INDICATOR REMOTE
PB1	PUSH BUTTON - RED
PB2	PUSH BUTTON - BLACK
MS	G2 VIDEO DOOR STATION
LAR	G2 LOCAL AREA REMOTE
STR	G2 STROBE LIGHT
T	CEM TRANSFORMER
S	G2 OMNIALERT STROBE SPEAKER
S	G2 LED SPEAKER FLUSH MOUNT
S	G2 LED SPEAKER METAL BOX
S	SPEAKER WEATHER-PROOF
S	SPEAKER FLUSH MOUNT
S	SPEAKER METAL BOX
MSM	G2 MESSAGE SIGN (MINI 17)
MS	G2 MESSAGE SIGN (STANDARD 24")
MSL	G2 MESSAGE SIGN (EXTENDED 36")
MSM-MNT	CEM FLAT PANEL MONITOR, XX" WITH MOUNT
VC	VOLUME CONTROL (CUSTOMER SUPPLIED)
AP1	ADAPTER PLATE SINGLE
AP2	ADAPTER PLATE DOUBLE
ARM	ARTICULATING ARM MOUNT - LONG

SYMBOL	DESCRIPTION
ATX	G2 ATX STATION CONTROLLER
EXP	G2 EXPANSION MODULE
UPS	G2 UNINTERRUPTIBLE POWER SUPPLY
AMP	CEM AMPLIFIER

project **MERCED FIRE DEPARTMENT, CA**
 building **FIRE STATION 53**
 address **800 LOUGHBOROUGH DRIVE**
 filename **USDD.CA_MRC.D.F553.FSA.DWG**
 date **3/21/2024 - 12:07PM**
 design by **DWK**



INSTALLER NOTES:

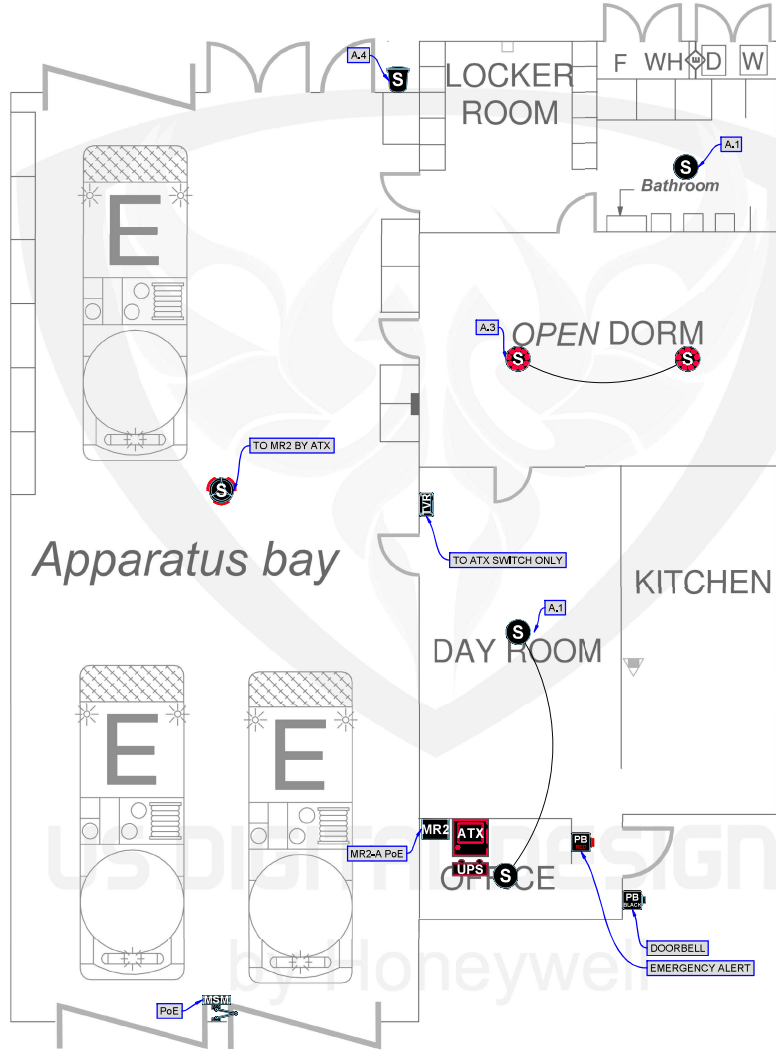
- INSTALLER TO VERIFY WALL AND CEILING TYPE TO DETERMINE NEED FOR FLUSH OR SURFACE MOUNT INSTALLATION OF EQUIPMENT SPECIFIED.
- INSTALLER TO COORDINATE CONNECTION BETWEEN ATX STATION CONTROLLER'S LINE-LEVEL AUDIO OUTPUT AND (EXISTING) OWNER-FURNISHED HOUSE AUDIO SYSTEM (AMP), (IF APPLICABLE)
- INSTALLER TO PROVIDE CAT6 & 184 CABLES FROM ATX CONTROLLER TO CUSTOMER'S STATION RADIO FOR BACKUP.
- INSTALLER TO PROVIDE CAT6 CABLE FROM ATX CONTROLLER WAN OUTPUT TO CUSTOMER'S IN-STATION NETWORK.
- INSTALLER TO COORDINATE CONNECTION BETWEEN EXISTING STATION LIGHTING CONTROL SYSTEM AND RELAY OUTPUT FROM ATX STATION CONTROLLER OR IO REMOTE WITH OWNER, (IF APPLICABLE)
- VOLUME CONTROL TO BE PROVIDED BY OWNER OR INSTALLER IF SHOWN ON DRAWING.
- INSTALLER TO VERIFY AND CONSIDER LOCATION(S) OF NETWORK AND RADIO CONNECTIONS.

PoE = G2 ATX Power-over-Ethernet (PoE) ports 1...8 and G2 Expansion Module ports 1...12
A.n = G2 ATX Amplifier 1...4 | **EA.n** = G2 External Amplifier 1...n | **CH.n** = G2 Message Remote 2 Channel 1 or 2

NOTES:

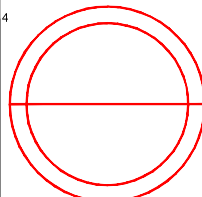
- SEE ARCHITECTURAL SPECIFICATIONS FOR ALL ROUGH-IN AND INSTALLATION DETAILS.
- US DIGITAL DESIGNS DOES NOT SUPPLY BACK BOXES, CONDUITS, OR MOUNTING FASTENERS.
- US DIGITAL DESIGNS FIRE STATION ALERTING PLANS ARE DIAGRAMMATIC AND FOR QUOTING PURPOSES ONLY. DRAWING MAY NOT BE TO SCALE.
- PHOENIX G2 SYSTEM IS ABLE TO SIGNAL OWNER-FURNISHED SYSTEMS, (EXHAUST, LIGHT, GAS SHUT OFF, ETC.) BUT USDD DOES NOT SUPPLY THESE SYSTEMS AND CANNOT WARRANT OR SUPPORT ANY OF THEIR PERFORMANCE BEYOND THE TRANSMISSION OF RELAY SIGNAL TO THEM.

THIS DOCUMENT CONTAINS CONFIDENTIAL AND PROPRIETARY INFORMATION WHICH IS THE EXCLUSIVE PROPERTY OF US DIGITAL DESIGNS, INC. REPRODUCTION, DISTRIBUTION OR USE BY OTHERS, IN WHOLE OR IN PART, IS NOT PERMITTED WITHOUT THE WRITTEN AUTHORIZATION FROM US DIGITAL DESIGNS, INC.



US DIGITAL DESIGNS	
Count	Name
1	G2 ATX STATION CONTROLLER
1	G2 HDTV REMOTE
2	G2 LED SPEAKER (G2-LVL-HC-70)
1	G2 MESSAGE REMOTE 2
1	G2 MESSAGE SIGN MINI (MS-G-M)
1	G2 MS ADAPTOR PLATE SINGLE (AP-S)
1	G2 OMNISTROBE SPEAKER
1	G2 UPS (G2-UPS)
1	MS-MNT-ART-L
1	PUSH BUTTON (BLACK)
1	PUSH BUTTON (RED)
3	SPEAKER FLUSH MOUNT
1	SPEAKER WEATHER-PROOF

POE PORTS REQUIRED ON ATX	
Count	Name
2	G2 PoE PORT REQUIRED



SIGNATURE REQUIRED

END-USER APPROVES STATION DESIGN FOR PURPOSES OF OBTAINING QUOTE. INSTALLER CONFIRMS DESIGN ALIGNS WITH SITE CONDITIONS. (SPEAKER MOUNTING TYPE, ATX LOCATION ETC.)

SYMBOL	DESCRIPTION
	G2 IO REMOTE
	G2 MESSAGE REMOTE 2
	G2 ROOM REMOTE 2
	G2 HDTV REMOTE
	G2 COLOR INDICATOR REMOTE
	PUSH BUTTON - RED
	PUSH BUTTON - BLACK
	G2 VIDEO DOOR STATION
	G2 LOCAL AREA REMOTE
	G2 STROBE LIGHT
	OEM TRANSFORMER
	G2 OMNIALERT STROBE SPEAKER
	G2 LED SPEAKER FLUSH MOUNT
	G2 LED SPEAKER METAL BOX
	SPEAKER WEATHER-PROOF
	SPEAKER FLUSH MOUNT
	SPEAKER METAL BOX
	G2 MESSAGE SIGN (MINI 12")
	G2 MESSAGE SIGN (STANDARD 24")
	G2 MESSAGE SIGN (EXTENDED 36")
	OEM FLAT PANEL MONITOR, XX" WITH MOUNT
	VOLUME CONTROL (CUSTOMER SUPPLIED)
	ADAPTER PLATE SINGLE
	ADAPTER PLATE DOUBLE
	ARTICULATING ARM MOUNT - LONG

SYMBOL	DESCRIPTION
	G2 ATX STATION CONTROLLER
	G2 EXPANSION MODULE
	G2 UNINTERRUPTIBLE POWER SUPPLY
	OEM AMPLIFIER

THIS DOCUMENT CONTAINS CONFIDENTIAL AND PROPRIETARY INFORMATION WHICH IS THE EXCLUSIVE PROPERTY OF US DIGITAL DESIGNS, INC. REPRODUCTION, DISTRIBUTION OR USE BY OTHERS, IN WHOLE OR IN PART, IS NOT PERMITTED WITHOUT THE WRITTEN AUTHORIZATION FROM US DIGITAL DESIGNS, INC.

PoE = G2 ATX Power-over-Ethernet (PoE) ports 1...8 and G2 Expansion Module ports 1...12
A.n = G2 ATX Amplifier 1...4 | **EA.n** = G2 External Amplifier 1...n | **CH.n** = G2 Message Remote 2 Channel 1 or 2

NOTES:

- SEE ARCHITECTURAL SPECIFICATIONS FOR ALL ROUGH-IN AND INSTALLATION DETAILS.
- US DIGITAL DESIGNS DOES NOT SUPPLY BACK BOXES, CONDUITS, OR MOUNTING FASTENERS.
- US DIGITAL DESIGNS FIRE STATION ALERTING PLANS ARE DIAGRAMMATIC AND FOR QUOTING PURPOSES ONLY. DRAWING MAY NOT BE TO SCALE.
- PHOENIX G2 SYSTEM IS ABLE TO SIGNAL OWNER-FURNISHED SYSTEMS, (EXHAUST, LIGHT, GAS SHUT OFF, ETC.) BUT USDD DOES NOT SUPPLY THESE SYSTEMS AND CANNOT WARRANT OR SUPPORT ANY OF THEIR PERFORMANCE BEYOND THE TRANSMISSION OF RELAY SIGNAL TO THEM.

INSTALLER NOTES:

- INSTALLER TO VERIFY WALL AND CEILING TYPE TO DETERMINE NEED FOR FLUSH OR SURFACE MOUNT INSTALLATION OF EQUIPMENT SPECIFIED.
- INSTALLER TO COORDINATE CONNECTION BETWEEN ATX STATION CONTROLLER'S LINE-LEVEL AUDIO OUTPUT AND (EXISTING) OWNER-FURNISHED HOUSE AUDIO SYSTEM (AMP), (IF APPLICABLE)
- INSTALLER TO PROVIDE CAT6 & 184 CABLES FROM ATX CONTROLLER TO CUSTOMER'S STATION RADIO FOR BACKUP.
- INSTALLER TO PROVIDE CAT6 CABLE FROM ATX CONTROLLER WAN OUTPUT TO CUSTOMER'S IN-STATION NETWORK.
- INSTALLER TO COORDINATE CONNECTION BETWEEN EXISTING STATION LIGHTING CONTROL SYSTEM AND RELAY OUTPUT FROM ATX STATION CONTROLLER OR IO REMOTE WITH OWNER, (IF APPLICABLE)
- VOLUME CONTROL TO BE PROVIDED BY OWNER OR INSTALLER IF SHOWN ON DRAWING.
- INSTALLER TO VERIFY AND CONSIDER LOCATION(S) OF NETWORK AND RADIO CONNECTIONS.

project **MERCED FIRE DEPARTMENT, CA**

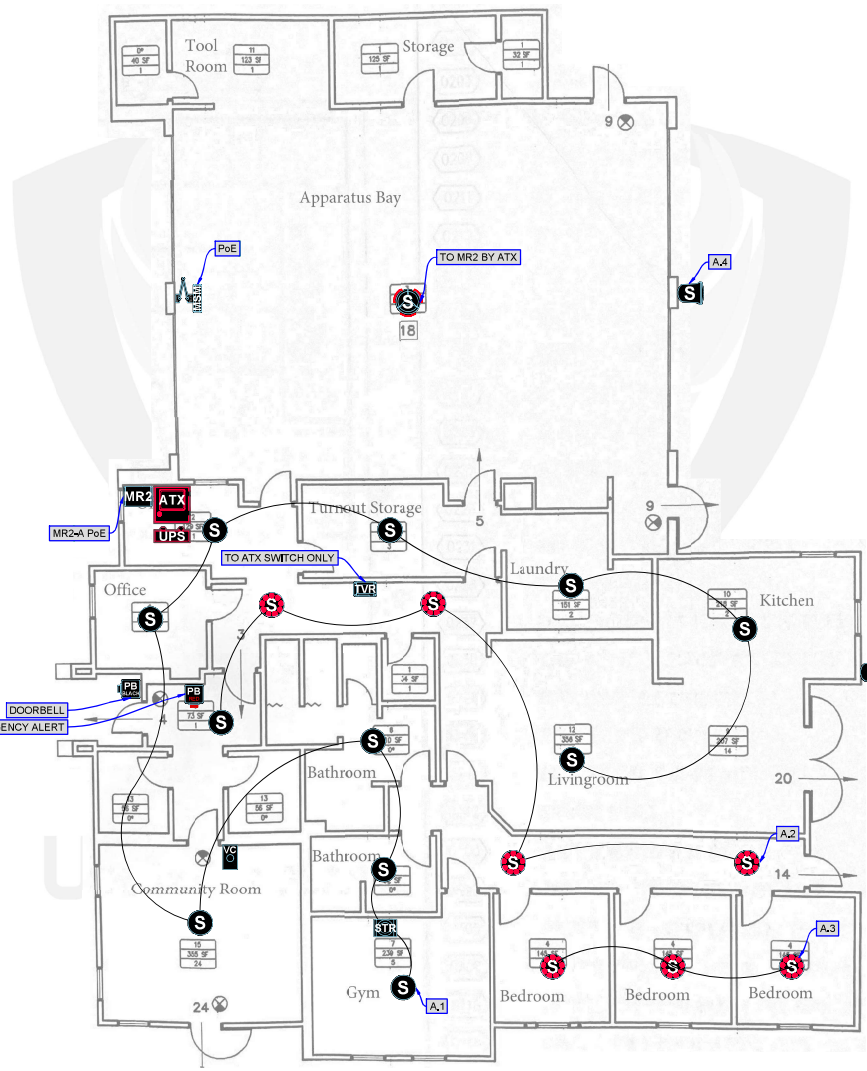
building **FIRE STATION 54**

address **1425 E 21ST ST**

filename **USDD.CA_MRCDC.F554.FSA.DWG**

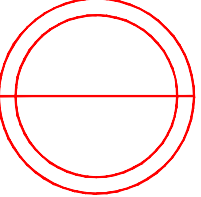
date **3/21/2024 - 12:07PM** design by **DWK**

A B C D



US DIGITAL DESIGNS	
Count	Name
1	G2 ATX STATION CONTROLLER
1	G2 HDTV REMOTE
7	G2 LED SPEAKER (G2-LVL-HC-70)
1	G2 MESSAGE REMOTE 2
1	G2 MESSAGE SIGN MINI (MS-G-M)
1	G2 MS ADAPTOR PLATE SINGLE (AP-S)
1	G2 OMNISTROBE SPEAKER
1	G2 STROBE LIGHT
1	G2 UPS (G2-UPS)
1	MS-MNT-ART-L
1	PUSH BUTTON (BLACK)
1	PUSH BUTTON (RED)
11	SPEAKER FLUSH MOUNT
2	SPEAKER WEATHER-PROOF VOLUME CONTROL (CUSTOMER SUPPLIED)

POE PORTS REQUIRED ON ATX	
Count	Name
2	G2 PoE PORT REQUIRED



SIGNATURE REQUIRED
 END USER APPROVES STATION DESIGN FOR PURPOSES OF OBTAINING QUOTE. INSTALLER CONFIRMS DESIGN ALIGNS WITH SITE CONDITIONS. (SPEAKER MOUNTING TYPE, ATX LOCATION ETC.)

SYMBOL	DESCRIPTION
	G2 IO REMOTE
	G2 MESSAGE REMOTE 2
	G2 ROOM REMOTE 2
	G2 HDTV REMOTE
	G2 COLOR INDICATOR REMOTE
	PUSH BUTTON - RED
	PUSH BUTTON - BLACK
	G2 VIDEO DOOR STATION
	G2 LOCAL AREA REMOTE
	G2 STROBE LIGHT
	CEM TRANSFORMER
	G2 OMNIALERT STROBE SPEAKER
	G2 LED SPEAKER FLUSH MOUNT
	G2 LED SPEAKER METAL BOX
	SPEAKER WEATHERPROOF
	SPEAKER FLUSH MOUNT
	SPEAKER METAL BOX
	G2 MESSAGE SIGN (MINI 17)
	G2 MESSAGE SIGN (STANDARD 24)
	G2 MESSAGE SIGN (EXTENDED 36)
	CEM FLAT PANEL MONITOR, XX" WITH MOUNT
	VOLUME CONTROL (CUSTOMER SUPPLIED)
	ADAPTER PLATE SINGLE
	ADAPTER PLATE DOUBLE
	ARTICULATING ARM MOUNT - LONG

INSTALLER NOTES:

- INSTALLER TO VERIFY WALL AND CEILING TYPE TO DETERMINE NEED FOR FLUSH OR SURFACE MOUNT INSTALLATION OF EQUIPMENT SPECIFIED.
- INSTALLER TO COORDINATE CONNECTION BETWEEN ATX STATION CONTROLLER'S LINE-LEVEL AUDIO OUTPUT AND (EXISTING) OWNER-FURNISHED HOUSE AUDIO SYSTEM (AMP), (IF APPLICABLE)
- INSTALLER TO PROVIDE CAT6 & 184 CABLES FROM ATX CONTROLLER TO CUSTOMER'S STATION RADIO FOR BACKUP.
- INSTALLER TO PROVIDE CAT6 CABLE FROM ATX CONTROLLER WAN OUTPUT TO CUSTOMER'S IN-STATION NETWORK.
- INSTALLER TO COORDINATE CONNECTION BETWEEN EXISTING STATION LIGHTING CONTROL SYSTEM AND RELAY OUTPUT FROM ATX STATION CONTROLLER OR IO REMOTE WITH OWNER, (IF APPLICABLE)
- VOLUME CONTROL TO BE PROVIDED BY OWNER OR INSTALLER IF SHOWN ON DRAWING.
- INSTALLER TO VERIFY AND CONSIDER LOCATION(S) OF NETWORK AND RADIO CONNECTIONS.

PoE = G2 ATX Power-over-Ethernet (PoE) ports 1...8 and G2 Expansion Module ports 1...12
A.n = G2 ATX Amplifier 1...4 | **EA.n** = G2 External Amplifier 1...n | **CH.n** = G2 Message Remote 2 Channel 1 or 2

NOTES:

- SEE ARCHITECTURAL SPECIFICATIONS FOR ALL ROUGH-IN AND INSTALLATION DETAILS.
- US DIGITAL DESIGNS DOES NOT SUPPLY BACK BOXES, CONDUITS, OR MOUNTING FASTENERS.
- US DIGITAL DESIGNS FIRE STATION ALERTING PLANS ARE DIAGRAMMATIC AND FOR QUOTING PURPOSES ONLY. DRAWING MAY NOT BE TO SCALE.
- PHOENIX G2 SYSTEM IS ABLE TO SIGNAL OWNER-FURNISHED SYSTEMS, (EXHAUST, LIGHT, GAS SHUT OFF, ETC.) BUT USDD DOES NOT SUPPLY THESE SYSTEMS AND CANNOT WARRANT OR SUPPORT ANY OF THEIR PERFORMANCE BEYOND THE TRANSMISSION OF RELAY SIGNAL TO THEM.

THIS DOCUMENT CONTAINS CONFIDENTIAL AND PROPRIETARY INFORMATION WHICH IS THE EXCLUSIVE PROPERTY OF US DIGITAL DESIGNS, INC. REPRODUCTION, DISTRIBUTION OR USE BY OTHERS, IN WHOLE OR IN PART, IS NOT PERMITTED WITHOUT THE WRITTEN AUTHORIZATION FROM US DIGITAL DESIGNS, INC.

SYMBOL	DESCRIPTION
	G2 ATX STATION CONTROLLER
	G2 EXPANSION MODULE
	G2 UNINTERRUPTIBLE POWER SUPPLY
	CEM AMPLIFIER

project **MERCED FIRE DEPARTMENT, CA**

building **FIRE STATION 55**

address **3520 Parsons Ave., Merced, CA 95340**

filename **USDD.CA_MRC.D.F555.FSA.DWG**

date **3/21/2024 - 12:07PM** design by **DWK**

A B C D