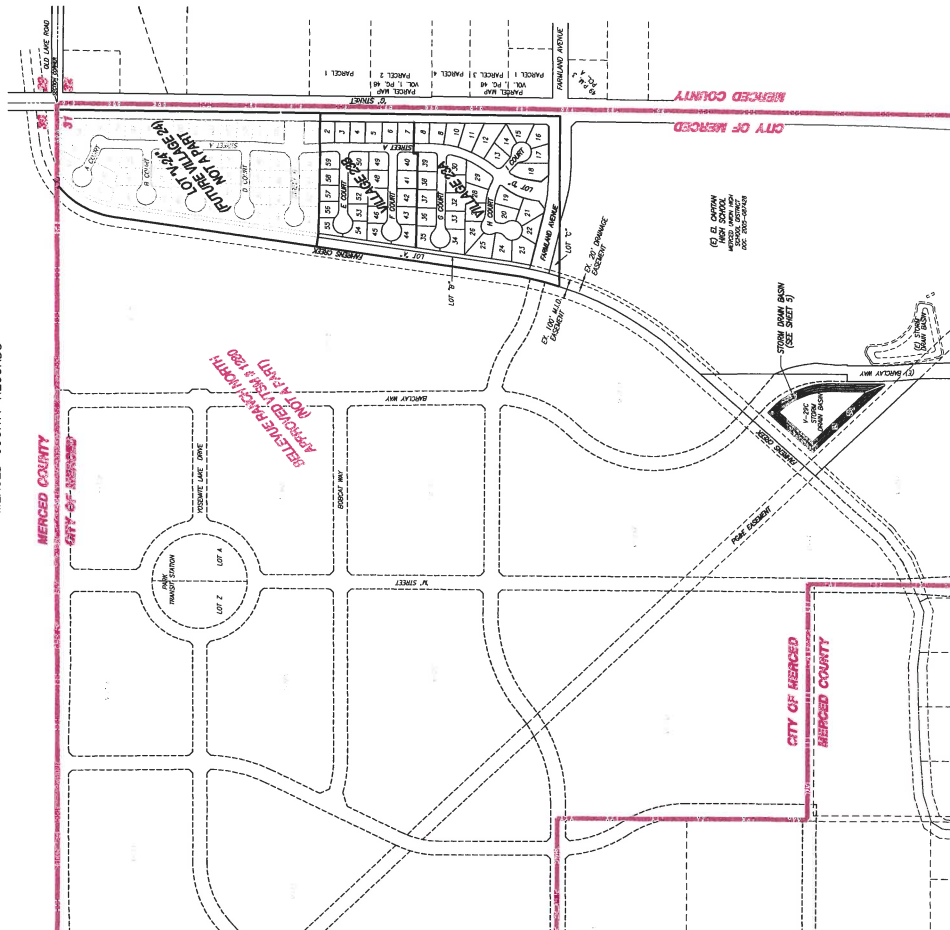


VESTING TENTATIVE SUBDIVISION MAP FOR:

BEING A SUBDIVISION OF A PORTION OF SECTION 31,
TOWNSHIP 6 SOUTH, RANGE 14 EAST, M.D.M.,
ALSO BEING A PORTION OF PARCEL 'C' AS SHOWN
IN BOOK 103 OF PARCEL MAPS AT PAGE 48,
MERCED COUNTY RECORDS



(Village 23 - Project to South Approved by PC in 2019)

ATTACHMENT D - Page 1

[illegible]



NO.	DESCRIPTIONS	DATE	APPROVED

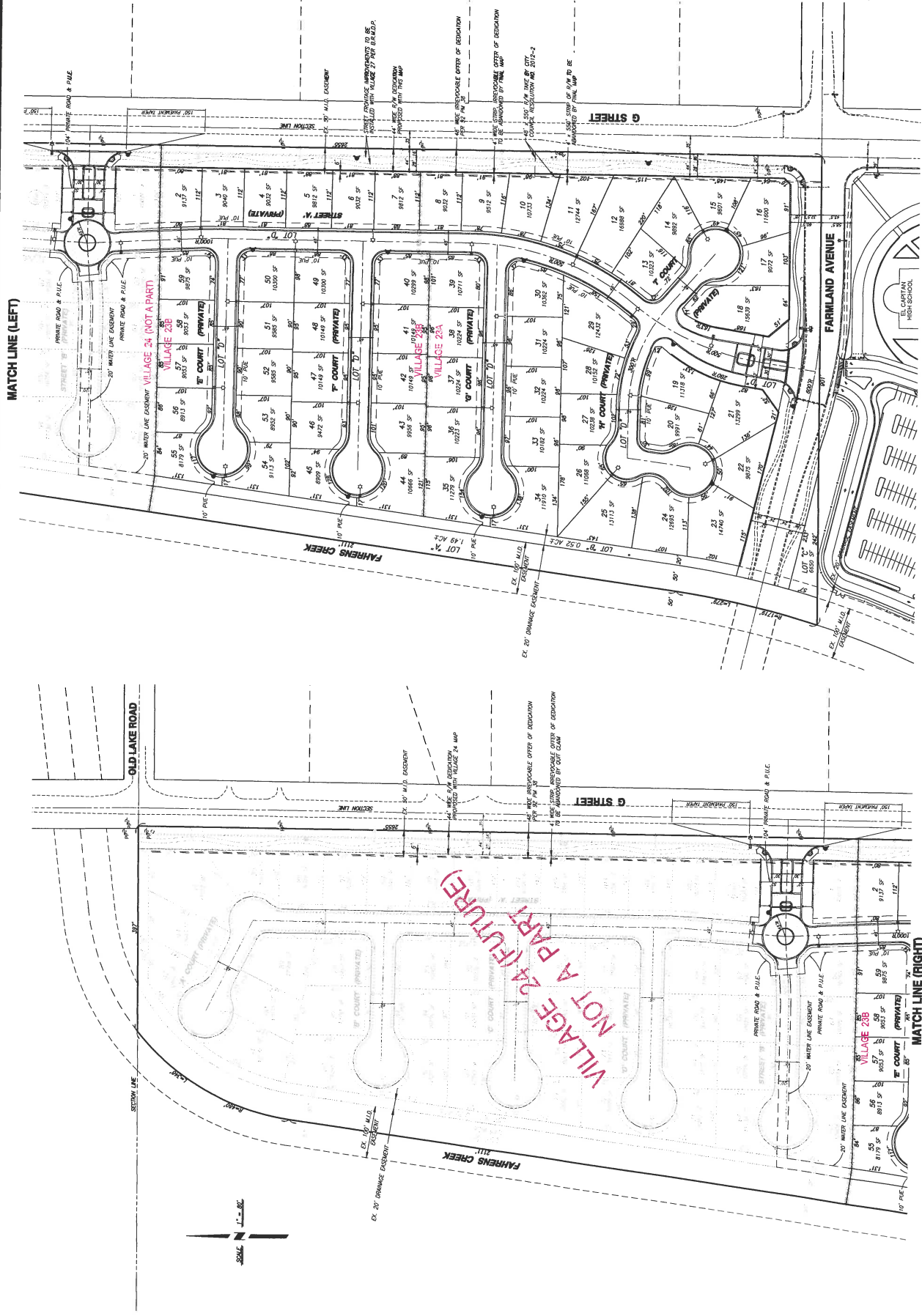
BENCHMARK ENGINEERING, INC.
507 J STREET • LOS ANGELES, CALIFORNIA • 90015
FAX: (213) 548-8905
(213) 737-0800



LOT DIMENSION PLAN
VESTING TENTATIVE SUBDIVISION MAP FOR
BELLEVUE RANCH NORTH
VILLAGE 23
MENDOTA, CALIFORNIA

JOB NO. 125987
DATE 11/13/18
CITY SAN JOSE
STATE CALIFORNIA

SHEET
NUMBER
2
OF 5 SHEETS



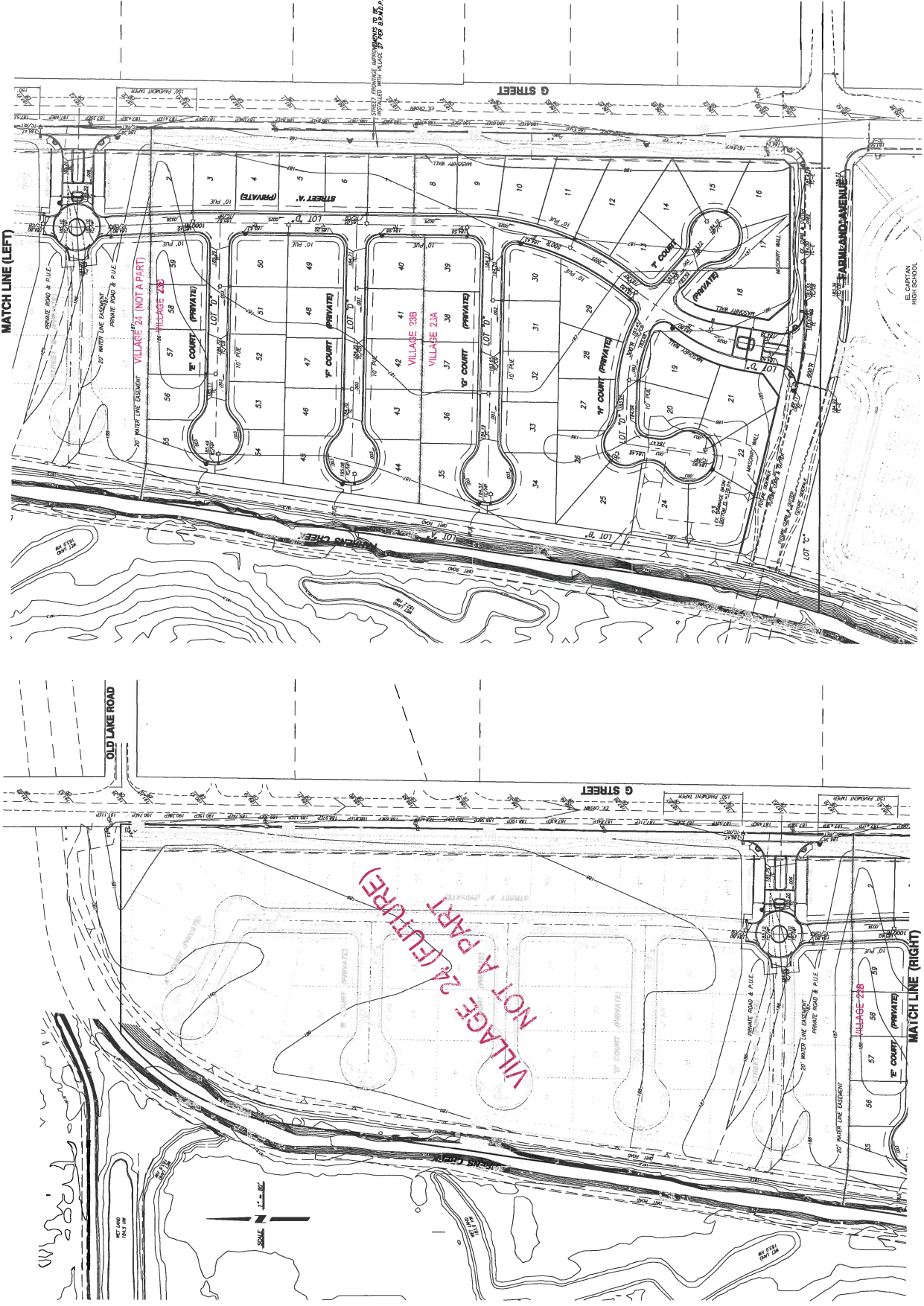


NO.	DESCRIPTIONS	DATE	APPROVED

BENCHMARK ENGINEERING, INC.
CIVIL ENGINEERING & LAND SURVEYING
607 J STREET - LOS BANOS, CALIFORNIA 94805
(920) 737-0900
FAX: (920) 648-0905

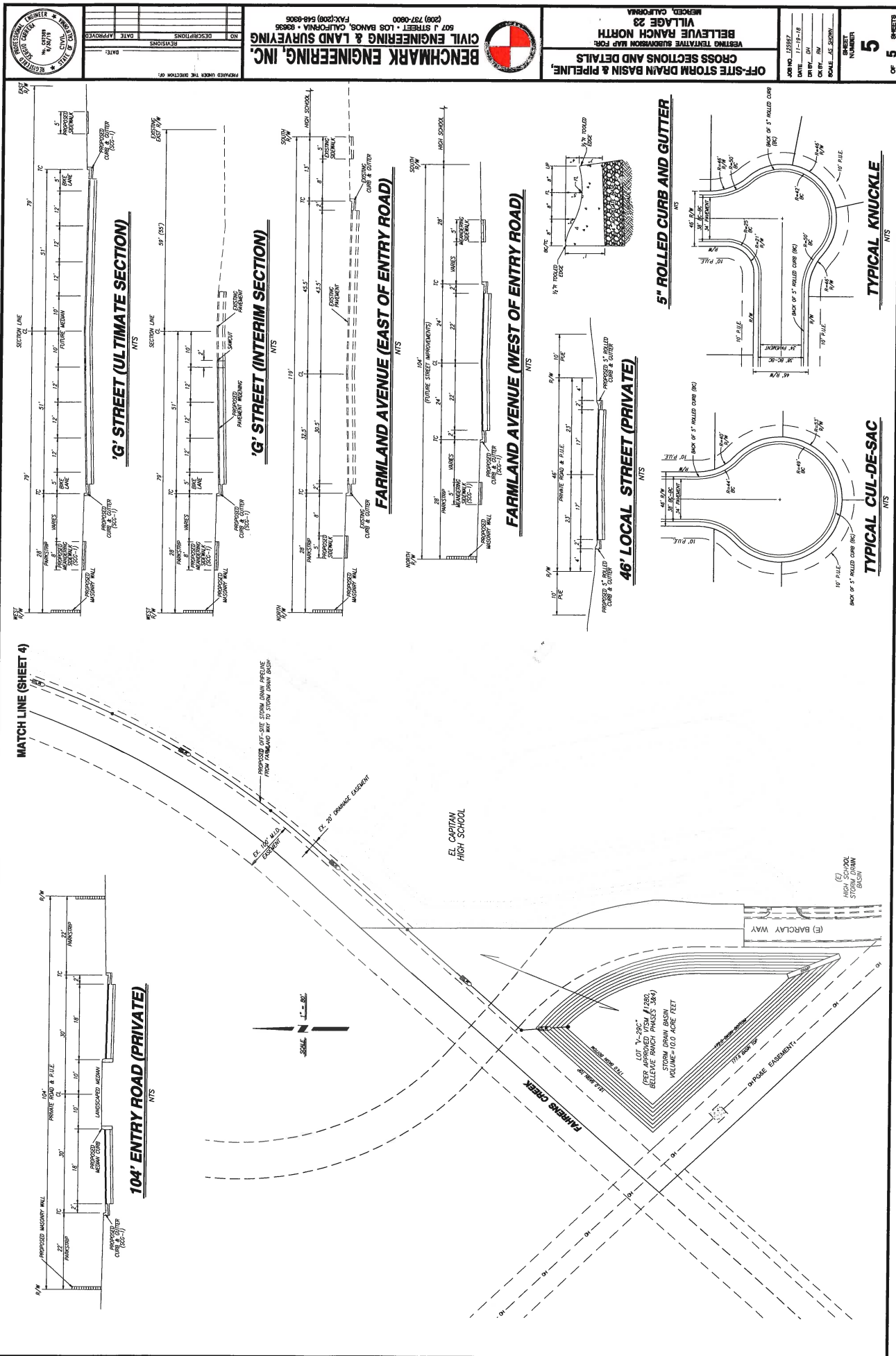
GRADING PLAN
VESTING TENTATIVE SUBDIVISION MAP FOR
BELLEVUE RANCH NORTH
VILLAGE 23
MERCED, CALIFORNIA

DATE: 03/27/17	3 SHEET NUMBER
BY: JN	
CHECK: JN	
SCALE: AS SHOWN	



(Village 23 - Project to South Approved by PC in 2019)





OFF-SITE STORM DRAIN BASIN & PIPELINE, VILLAGE 23
BELLEVIEW RANCH NORTH
CROSS SECTIONS AND DETAILS

CIVIL ENGINEERING & LAND SURVEYING, INC.
 507 J STREET - LOS ANGELES, CALIFORNIA 90013
 (202) 737-0800
 FAX: (202) 548-0808

5
 SHEET NUMBER
 OF 5 SHEETS

DESIGNED BY: [Signature]
CHECKED BY: [Signature]
DATE: 12/12/18
SCALE: AS SHOWN

APPROVED BY: [Signature]
DATE: 12/12/18
SCALE: AS SHOWN

PROJECT: VILLAGE 23
LOCATION: LOS ANGELES, CALIFORNIA