



CITY OF MERCED

Merced Civic Center
678 W. 18th Street
Merced, CA 95340

Meeting Agenda

Recreation & Parks Commission

Monday, September 28, 2020

5:30 PM

City Council Chamber, 2nd Floor, Merced Civic
Center, 678 W. 18th Street, Merced, CA 95340

NOTICE TO PUBLIC

WELCOME

At least 72 hours prior to each regular Board/Commission meeting, a complete agenda packet is available for review on the City's website at www.cityofmerced.org or at the City Clerk's Office, 678 W. 18th Street, Merced, CA 95340. All public records relation to an open session item that are distributed to a majority of the Commission will be available for public inspection at the City Clerk's Office during regular business hours.

PUBLIC COMMENT: OBTAIN SPEAKER CARD FROM THE BOARD/COMMISSION CLERK

Members of the audience who wish to address the Commission are requested to complete a speaker card available at the podium against the right-hand side of the Council Chamber. Please submit the completed card to the Board/Commission Clerk before the item is called, preferably before the meeting begins.

INDIVIDUALS WITH DISABILITIES

Accommodation for individuals with disabilities may be arranged by contacting the City Clerk at (209) 388-8650. Assisted hearing devices are available for meetings held in the Council Chamber.

A. CALL TO ORDER

B. PLEDGE OF ALLEGIANCE

C. ROLL CALL

D. PUBLIC COMMENT

Members of the public who wish to speak on any matter not listed on the agenda may speak during this portion of the meeting and will be allotted 3 minutes. State law prohibits the Board/Commission from acting at this meeting on any matter raised during the public comment period. Members of the public who wish to speak on a matter that is listed on the agenda will be called upon to speak during discussion of that item.

E. CONSENT CALENDAR

Adoption of the Consent Calendar may be made by one motion of the Board/Commission, provided that any Member, individual, or organization may request removal of an item from the Consent Calendar for separate consideration. If a request for removal of an item from the Consent Calendar has been received, the item will be discussed and voted on separately.

- E.1.** [20-553](#) **SUBJECT:** Adoption and Filing of Recreation and Park Commission Meeting Minutes of August 24, 2020

REPORT IN BRIEF

Recreation and Park Commission Meeting Minutes of August 24, 2020.

RECOMMENDATION

Recreation and Park Commission - Adopt a motion approving and filing the Recreation and Park Commission Meeting Minutes of August 24, 2020.

F. REPORTS

- F.1.** [20-549](#) **SUBJECT:** Brown Act Training to be Presented by the City Attorney's Office

REPORT IN BRIEF

Training presentation on the Brown Act

RECOMMENDATION

Information only-no action needed

- F.2.** [20-507](#) **SUBJECT:** Update from the Ad Hoc Park Site Selection Committee Regarding Adding Three (3) Additional Park Site Options for the Proposition 68 Grant and Re-prioritization of Parks Priority List

REPORT IN BRIEF

Update from the last meeting of the Ad Hoc Park Site Selection Committee

RECOMMENDATION

Information only- no action needed

G. BUSINESS

- G.1.** [20-489](#) **SUBJECT:** Discussion on Setting Commission Goals and Priorities

REPORT IN BRIEF

Discussion to set goals and priorities for the Recreation and Parks

Commission.

RECOMMENDATION

Make a motion to set goals and priorities for the Recreation and Parks Commission.

G.2. [20-490](#)

SUBJECT: Needs Assessment Survey for Parks and Recreation Programming

REPORT IN BRIEF

Discussion on a potential process to evaluate Parks and Recreation programming.

RECOMMENDATION

Information only-no action needed.

G.3. [20-552](#)

SUBJECT: Discussion on the Use of Participatory Budgeting for Measure Y Revenue and Making a Recommendation to the City Council for Budgeting Future Measure Y Revenues

REPORT IN BRIEF

Discussion on the possibility of using a participatory budgeting process for the Measure Y revenue.

RECOMMENDATION

Discuss participatory budgeting and make a motion to make a recommendation to city council for budgeting future Measure Y revenues.

G.4. [20-551](#)

SUBJECT: Discussion and Recommendation to the City Council on Ways of Making Parks More Youth Friendly

REPORT IN BRIEF

Discussion on making parks more youth friendly.

RECOMMENDATION

Make a motion to recommend to city council specific changes to make parks more youth friendly.

G.5. [20-550](#)

SUBJECT: Discussion Regarding the Feasibility of Utilizing the Senior Center as a Youth Center After the Conclusion of all Senior Programming

REPORT IN BRIEF

Discussion on the feasibility of using the Senior Center after hours as a

youth center.

RECOMMENDATION

Information only-no action needed.

G.6. [20-475](#)

SUBJECT: Discussion on Sports Park Usage Policy

REPORT IN BRIEF

Discussion on a sports park usage policy suggested by Merced Soccer Association

RECOMMENDATION

Information only-no action needed.

G.7. [20-548](#)

SUBJECT: Provide Direction to Staff for Use of Stephen Leonard and McNamara Youth Centers After the Current Contracts Expire Including, but not Limited to, Renewing Contracts with Current Tenants, Conducting A Request for Interest for Use of the Centers, or Making a Recommendation that Staff Offer Programming at one of the Sites

REPORT IN BRIEF

Considers making a motion to direct staff on how to proceed with expiring leases at Stephen Leonard and McNamara Youth Centers.

RECOMMENDATION

Make a motion recommending how to proceed with expiring leases at Stephen Leonard and McNamara Youth Centers.

H. ADJOURNMENT



CITY OF MERCED

Merced Civic Center
678 W. 18th Street
Merced, CA 95340

ADMINISTRATIVE REPORT

File #: 20-553

Meeting Date: 9/28/2020

Report Prepared by: Jennifer Arellano, Recreation Supervisor, Parks and Recreation

SUBJECT: Adoption and Filing of Recreation and Park Commission Meeting Minutes of August 24, 2020

REPORT IN BRIEF

Recreation and Park Commission Meeting Minutes of August 24, 2020.

RECOMMENDATION

Recreation and Park Commission - Adopt a motion approving and filing the Recreation and Park Commission Meeting Minutes of August 24, 2020.

ATTACHMENTS

1. August 24, 2020



CITY OF MERCED

Merced Civic Center
678 W. 18th Street
Merced, CA 95340

Minutes Recreation & Parks Commission

Monday, August 24, 2020

5:30 PM

A. CALL TO ORDER

Chair CARDONA called the Recreation and Parks Commission meeting to order at 5:34 PM.

B. PLEDGE OF ALLEGIANCE

C. ROLL CALL

Clerk's Note: Commissioner Huitron left the meeting at 6:45 PM.

Present: 6 - Eric Moore, Chairperson Norma Cardona, Valente Huitron, Vice Chair Yesenia Curiel, Justin Anderson and Doug Piuser

Absent: 1 - Ralph Morris

D. PUBLIC COMMENT

None.

E. CONSENT CALENDAR

E.1. **SUBJECT:** Recreation and Park Commission Meeting Minutes of July 27, 2020

REPORT IN BRIEF

Recreation and Park Commission Meeting Minutes of July 27, 2020.

RECOMMENDATION

Recreation and Park Commission - Adopt a motion approving and filing the Recreation and Park Commission Meeting Minutes of July 27, 2020.

A motion was made by Member Moore, seconded by Member Anderson, that this agenda item be approved. The motion carried by the following vote:

Aye: 6 - Member Moore
Cardona
Member Huitron
Vice Chair Curiel
Member Anderson
Piuser

No: 0

Absent: 1 - Member Morris

F. REPORTS

F.1. SUBJECT: Quarterly Reports from Youth Center Lessees

REPORT IN BRIEF

Youth Center Lessees in attendance to give quarterly activity reports.

RECOMMENDATION

Information only-no action needed.

DISCUSSION

At the July Parks and Recreation Commission meeting, Vice Chair Yesenia CURIEL requested a quarterly report from the Boys and Girls Club. Since quarterly reports are required from all youth center lesees, occupants of the Boys and Girls Club, McNamara Youth Center, and Stephen Leonard Youth Center will give quarterly reports.

McNamara Youth Center lessee representative Kelly TURNER gave a quarterly report presentation of activities at the Youth Center.

Commissioners asked questions and thanked Ms. TURNER for her good work.

Stephen Leonard Youth Center Lessee representative Angela LOPEZ gave a quarterly report presentation of activities at the Youth Center.

Commissioners asked questions to which additional lessee representatives, Daisy RAMIREZ and Fernando AQUILERA helped Ms. LOPEZ to respond to.

Commissioners thanked everyone for their good work at the Stephen Leonard Youth Center.

Boys and Girls Club lessee representative Virginia HAYWARD gave a quarterly report presentation of activities at the Club.

Commissioners asked questions and thanked Ms. HAYWARD for the good work at the Club.

Vice Chair Yesenia CURIEL spoke of the need for a standardized reporting form for all Youth Center lessees and volunteered to create one. Acting City Manager Stephanie DIETZ made a recommendation for Staff to assist by giving needed information.

G. BUSINESS

G.1. SUBJECT: Selection of a New Chair and Vice Chair

REPORT IN BRIEF

Yearly selection of Chair and Vice Chair.

A motion was made by Vice Chair Curiel, seconded by Member Moore, that Commissioner Valente Huitron be nominated for Chair.

A motion was made by Member Cardona, seconded by Member Moore, that Commissioner Douglas Piuser be nominated for Vice Chair.

The motion carried by the following vote:

Aye: 6 - Member Moore
Cardona
Member Huitron
Vice Chair Curiel
Member Anderson
Piuser

No: 0

Absent: 1 - Member Morris

G.2. SUBJECT: Update and Discussion on Future Soccer Complex Site CP-42

REPORT IN BRIEF

Staff update and discussion on future soccer complex site CP-42.

RECOMMENDATION

Information only-no action needed.

DISCUSSION

At the July Recreation and Parks Commission meeting Commissioner Eric MOORE requested this item to discuss the future soccer complex site CP-42 and to receive an update from staff on recent community meetings regarding the site.

Parks and Recreation Director Joey CHAVEZ gave a brief presentation on updates to the CP-42 park planning process.

City Manager Stephanie DIETZ suggested Commissioners create an ad hoc subcommittee to discuss CP-42 and other park sites for Prop 68 application.

Commissioners discussed creating a park site selection ad hoc committee; members Douglas PIUSER and Yesenia CURIEL volunteered to be on the committee, and Commissioner MOORE suggested member Valente HUITRON also be on the committee.

G.3.

SUBJECT: Discussion on Sports Park Usage Policy

REPORT IN BRIEF

Discussion on a sports park usage policy suggested by Merced Soccer Association

RECOMMENDATION

Information only-no action needed.

Commissioner Yesenia CURIEL stated not all members were present for the discussion and in response, Acting City Manager Stephanie DIETZ suggested tabling this item to the next meeting.

G.4.

SUBJECT: Adopt a Motion Selecting 3 Potential Park Sites for the Submission of 3 Proposition 68 Statewide Park Program Round 4 Grant Applications for an Amount Not to Exceed \$8.5 Million Dollars (\$8,500,000) Per Application

REPORT IN BRIEF

Considers selecting 3 potential park sites for the submittal of 3 grant applications for funding of park renovations, expansions, and/or to create new parks throughout Merced for an amount not to exceed \$8.5 Million (\$8,500,000) per park site.

RECOMMENDATION

Recreation and Parks Commission - Adopt a motion selecting 3 project sites for the submission of 3 Proposition 68 Statewide Park Program Round 4 grant applications for an amount not to exceed \$8.5 million dollars (\$8,500,000) per project site.

Recreation Supervisor, Jennifer ARELLANO gave a presentation on Proposition 68 Grant Funding and reviewed possible project sites.

Commissioners asked questions and discussed their priorities for selecting the 3 project sites.

Commissioner ANDERSON stated he did not think the I Street and 18th Street site would be a good site for a park due to high violence and crime in the area.

Commissioner MOORE suggested prioritizing the list of sites instead of selecting 3, so that staff and City Council could be flexible in site selection.

A motion was made by Member Moore, seconded by Member Piuser, that the park sites be ordered from highest to least preference from I St. and 18th Street, Alfarata Ranch, CP-42, William Lloyd Garrison, Bob Hart Square, Rascal Creek Bike Path, Santa Fe and G Street. The motion carried by the following vote:

Aye: 5 - Member Moore
Cardona
Member Huitron
Vice Chair Curiel
Piuser

No: 1 - Member Anderson

Absent: 1 - Member Morris

G.5.

SUBJECT: Discussion on the Format of Commission Meetings During COVID-19

REPORT IN BRIEF

Discuss the format of Board and Commission Meetings.

RECOMMENDATION

Provide staff direction on the format of future Board and Commission Meetings.

Commissioners discussed virtual and in-person meetings and expressed their desire to continue to meet in person.

G.6.

SUBJECT: Request to Add Item to Future Agenda

REPORT IN BRIEF

Provides members of the Boards/Commissions to request that an item be placed on a future Boards/Commissions agenda for initial consideration by the Boards/Commissions.

Commissioner CARDONA requested to add an item to discuss setting goals and priorities for the Commission, and an item for October's agenda to discuss what to do with the mini parks recommended for disposal, and an item for October's agenda to discuss park naming in regards to the

Black Lives Matter movement.

Commissioner MOORE requested to add an item for an update from the ad hoc park site selection committee, and an item to discuss a legislative subpoena process.

Commissioner CURIEL requested to add an item to discuss Parks and Recreation Needs Assessment.

G.7.

SUBJECT: Commission Comments

REPORT IN BRIEF

Provides an opportunity for the Chair and/or Member(s) to make a brief announcement on any activity(ies) she/he has attended on behalf of the Commission and to make a brief announcement on future community events and/or activities. The Brown Act does not allow discussion or action by the legislative body under this section.

Commissioner CURIEL suggested to commissioners to watch City Council meetings and stay current on happenings.

Vice Chair Piuser thanked everyone for welcoming him to the Commission and stated his excitement to be a part of the Commission.

Commissioner CARDONA welcomed Commissioner Piuser and thanked everyone for their support during her tenure as Chair.

Commissioner MOORE discussed the passing of Butch Hughes and his importance in the community and how much he will be missed.

Recreation Supervisor ARELLANO discussed the passing of Janet Demaree and requested the meeting be adjourned in honor of her and Butch Hughes.

Parks and Recreation Director CHAVEZ discussed his memories and appreciation of Coach Butch Hughes.

H. ADJOURNMENT

The Recreation and Parks Commission meeting was adjourned at 7:58 PM in remembrance of Coach Butch Hughes and Janet Demaree.



CITY OF MERCED

Merced Civic Center
678 W. 18th Street
Merced, CA 95340

ADMINISTRATIVE REPORT

File #: 20-549

Meeting Date: 9/28/2020

Report Prepared by: Jennifer Arellano, Recreation Supervisor, Parks and Recreation

SUBJECT: Brown Act Training to be Presented by the City Attorney's Office

REPORT IN BRIEF

Training presentation on the Brown Act

RECOMMENDATION

Information only-no action needed

DISCUSSION

The City Attorney will conduct the training regarding the Brown Act - Open Meeting Law and answer any questions from the Commission.

ATTACHMENTS

2020 Brown Act Presentation

THE BROWN ACT

California's Open Meeting Law

City of Merced
Recreation and Parks Advisory Commission
September 28, 2020

THE BROWN ACT

- ▶ The Brown Act was enacted in 1953.
- ▶ Is codified in the California Government Code, section 54950, et seq.
- ▶ Requires the deliberations and actions of California's public agency governing boards, commissions and councils be taken openly and in public.

KEY PROVISIONS

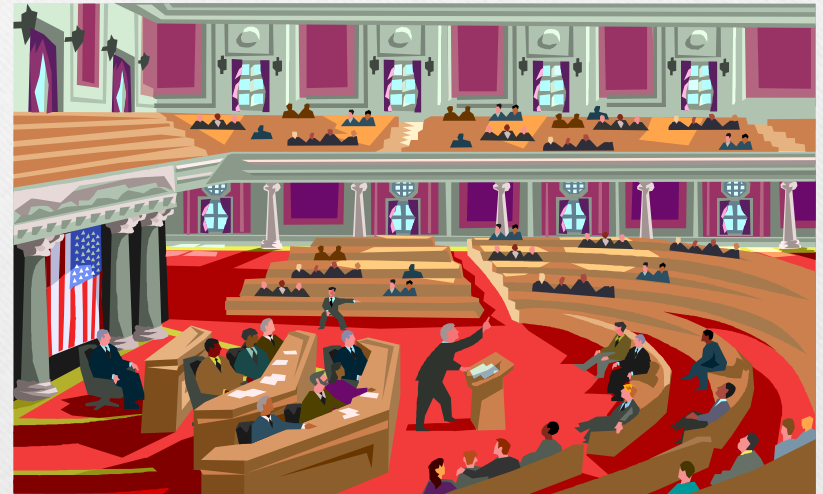
- ▶ A meeting shall be open and public except when the Brown Act authorizes otherwise.
- ▶ The public has a right to attend and participate in the meeting.
- ▶ A meaningful agenda must be posted in advance of the meeting.
- ▶ Discussion and action is limited to the matters listed on the agenda for the meeting.
- ▶ Discussions (a) outside of noticed meetings (b) by a majority of committee members (c) about an item of business within the subject matter jurisdiction of the committee (d) are prohibited.

COMMON QUESTIONS AND ISSUES

- Who is covered by the Brown Act?
- What constitutes a meeting?
- What are the notice and agenda requirements?
- What are the public's rights under the Brown Act?
- What are the consequences for violating the Brown Act?

WHO IS GOVERNED BY THE BROWN ACT?

- ▶ Any “legislative body”
- ▶ Governing body of any local agency, i.e., the city council
- ▶ Local agency commissions, appointed either permanently or temporary, who have decision making or advisory powers.
- ▶ Recreation and Parks Advisory Commission is an advisory body and covered by the Brown Act
(Government Code §54952)



WHAT IS A MEETING?

- ▶ A meeting is:
 - ▶ (1) a majority of the members of a the Recreation and Parks Advisory Commission (2) at the same time and locations including teleconference locations (3) to discuss, deliberate, or decide on any item that is within subject matter jurisdiction of the Recreation and Parks Advisory Commission.

What is the subject matter jurisdiction of the Recreation and Parks Advisory Commission?

Review projected tax revenues as part of the budget process

Recommend expenditures to the City Council as part of the budget process

Review the independent audit and provide findings to the City Council

SERIAL MEETINGS

Hub and Spoke/Daisy Chain



- (1) A chain or series of communications
- (2) Each of which involves less than a quorum of the Recreation and Parks Advisory Commission
- (3) But when taken together involve a majority of the body's members (or)
- (4) A concerted plan to engage in collective deliberation on public business through a series of letters, telephone calls, e-mails, that pass from one member of the governing body to the next and excluding the public.

WHAT CONSTITUTES A SERIES OF COMMUNICATIONS?

- A “series of communications” includes conference calls, emails, text messages shared among the majority of committee members, or conversations among members in which the position of other members are shared to the majority.
- Technological devices may create a “virtual serial meeting” so be careful when using social media, e-mails, “IM”, texts, chat rooms, blogs, etc.

E-MAIL

- ▶ Remember e-mails never go away.
- ▶ E-mail can create a “virtual serial meeting”
- ▶ Don’t hit “reply all” in response to email from staff to all members of the committee.
- ▶ Refrain from emailing or forwarding an email to a majority of committee members.

ISSUE/CHALLENGE

When can an issue or discussion become an issue for Brown Act purposes?

WHEN THE ISSUE IS:

- Within subject matter jurisdiction of the Recreation and Parks Advisory Commission; and,
 - A majority of Recreation and Parks Advisory Commission members participate; and,
 - “Meeting is held”; and,
 - Brown Act is not followed.
-
- ▶ This deprives the public of an opportunity for meaningful observation of and participation in the decision-making.

EXAMPLE: E-MAIL

What starts out as “legal” under the Brown Act:

- I think we should do “x” at our next meeting

Becomes “illegal” when it is replied to by a majority or by “Reply to All”:

- “I agree” [Reply to All]
- “Good idea!!!” [Reply to All]
- “Concur . . .” [Reply to All]

EXCEPTIONS TO MEETING:

- Individual Contacts: Individual contacts or conversations between a member of a legislative body and any other person.
- Conferences: Public or educational conferences on matters of general interest.
- Community Meetings: Publicized and public meetings to discuss a topic of local community concern organized by someone other than the city.

EXCEPTIONS (cont'd):

- Other Legislative Bodies: Open and noticed meeting of another body of the public agency.
- Standing Committees: Open and noticed meeting of a standing committee within own agency, provided not a member of standing committee.
- Social or Ceremonial Events: Purely social or ceremonial events as long as no discussion of business w/in subject matter of jurisdiction of local agency.

AGENDAS AND NOTICE

- Every meeting of the Recreation and Parks Advisory Commission must be preceded by a posted agenda.
- The agenda must be posted at least 72 hours before the regular meeting.
- The agenda must advise the public of the meeting and the matters to be transacted or discussed.
- The agenda must state the meeting time and place.
- Each item of business to be transacted must be briefly described.

ACTION ON NON-AGENDIZED ITEMS

- The committee members or staff may “briefly” respond to statements or questions posed by the public at a public meeting.
- A committee member may ask “a question for clarification, make a brief announcement, or make a brief report on his or her own activities.”
- Otherwise, no action can be taken on issues or items that were not agendized.

PUBLIC PARTICIPATION

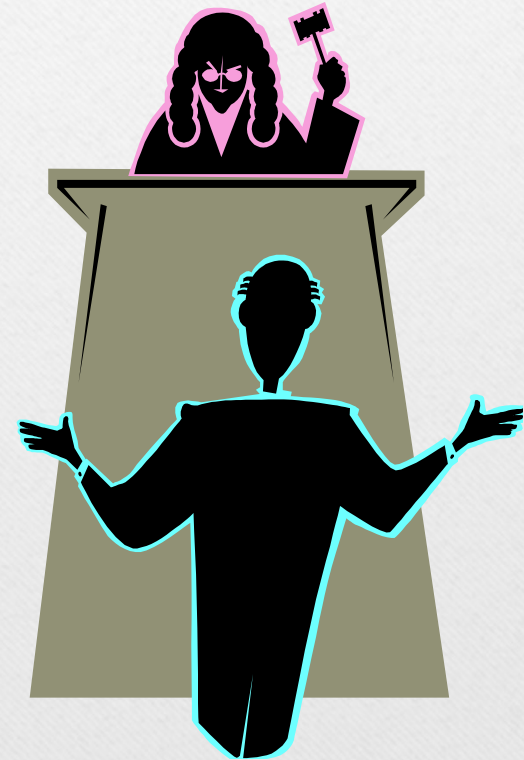
- The public has a right to attend, observe and participate in meetings.
- Members of the public cannot be required to register their names or provide information.
- All actions taken by the Recreation and Parks Advisory Commission must be in open session, unless a closed session is authorized and the vote of each member must be disclosed to the public at the time the action is taken.

CRIMINAL ENFORCEMENT ACTIONS

- Why do we take this so seriously?
- A violation of the Brown Act can be charged as a misdemeanor.

CIVIL ENFORCEMENT ACTIONS:

- Enforcement actions can be brought by the district attorney or any interested person to get a court order to stop a violation of the Brown Act.
- A court action may also void actions that were taken in violation of the Brown Act.
- Before bringing suit, the plaintiff must demand the committee cure or correct the offending action.



CONCLUSION

Discussion, Questions, & Answers



ADMINISTRATIVE REPORT

File #: 20-507

Meeting Date: 9/28/2020

Report Prepared by: Jennifer Arellano, Recreation Supervisor, Parks and Recreation

SUBJECT: Update from the Ad Hoc Park Site Selection Committee Regarding Adding Three (3) Additional Park Site Options for the Proposition 68 Grant and Re-prioritization of Parks Priority List

REPORT IN BRIEF

Update from the last meeting of the Ad Hoc Park Site Selection Committee

RECOMMENDATION

Information only- no action needed

DISCUSSION

The ad hoc park site selection committee met virtually on Tuesday, September 8th to review three additional park site options for the proposition 68 grant. Present were: Vice Chair Douglas Piuser, Chair Valente Huitron and Clerk Jennifer Arellano, Member Yesenia Curiel was unable to attend.

At the time of the last regular Recreation and Parks Commission meeting on August 24 these sites were not considered due to only being park renovations which generally score lower and are thus not as competitive. However, after the Commission meeting it was discovered that these 3 additional sites do score very competitively despite not being new park projects.

In order to select the most desired site in the community as well as the most competitive, these 3 additional sites were brought before the ad hoc committee for consideration and reprioritization along with all the previously reviewed sites. The committee will give an update of their decisions tonight.

ATTACHMENTS

1. Additional Park Site Options

Proposition 68 Grant- \$200,000- \$8,500,000 Per Request

Statewide Park Program (SPP) competitive grants will create **NEW PARKS** and **NEW RECREATION OPPORTUNITIES** in CRITICALLY UNDERSERVED COMMUNITIES across California. **Due: December 14, 2020**

CRITICALLY UNDERSERVED COMMUNITY – an area within PROXIMITY of a PROJECT SITE that has a ratio of less than 3 acres of PARK SPACE per 1,000 residents, or a median household income below \$56,982 (up from \$51,026 in the last round) based on the response to Project Selection Criteria 1 or 2.

A PROJECT must involve either DEVELOPMENT or a combination of ACQUISITION and DEVELOPMENT to: 1. Create a NEW PARK, or 2. EXPAND an EXISTING PARK, or 3. RENOVATE an EXISTING PARK (NOTE: the minimum percentage of funds mandated to renovate/expand existing parks has been completely met in round #3.)

All PROJECTS must **create** or **RENOVATE** at least one RECREATION FEATURE. Examples of RECREATION FEATURES:

☐ ACQUISITION of land: Combined with DEVELOPMENT of a NEW RECREATION FEATURE. **OR** ☐ Already has a RECREATION FEATURE for public use at close of escrow.

☐ Aquatic center, swimming pool, splash pad, fishing pier or paddling launch site

☐ Amphitheater/performing arts dance, music, and theater stage

☐ Athletic fields (soccer regulation or “futbol-rapido”, baseball, softball, football, etc.)

☐ Athletic courts (basketball, “futsal”, tennis, pickleball, etc.)

☐ Community gardens, botanical or demonstration gardens and orchards

☐ Community/Recreation center (only if it will be in or ADJACENT to a PARK)

☐ Dog park

☐ Jogging and walking loop, par course, running track

☐ Non-motorized trail, pedestrian/bicycle bridge, greenbelt/linear PARK

☐ Outdoor gym exercise equipment (stations fixed into ground)

☐ Open space and natural area for public recreation use

☐ Picnic/Bar-B-Que areas

☐ Playground and tot lot

☐ Plaza, Zocalo, Gazebo

☐ Public art (mosaic tiles, sculptures, murals)

☐ Skate park, skating rink, and BMX or pump track (non-motorized bike tracks)

☐ Lighting to allow for extended night time use of a RECREATION FEATURE

☐ Shade structure/COVERED PARK areas over a RECREATION FEATURE to allow for extended day time use

A PROJECT may also include MAJOR SUPPORT AMENITIES: • Restroom, snack shack • Parking lot, staging area, pathway to a RECREATION FEATURE • Landscaping or lighting that will be constructed throughout the PARK

APPLICATIONS where the majority of the TOTAL PROJECT COST is for a MAJOR SUPPORT AMENITY will be less competitive. PROJECTS should create a NEW RECREATION OPPORTUNITY(S) as the primary goal.

The maximum score is 100 points.

- All competing APPLICATIONS start with 0 points.
- Points are gained through the Project Selection Criteria.

PROJECT SELECTION CRITERIA		MAX POINT VALUE
PROJECT LOCATION		
1.	Critical Lack of PARK SPACE	15
2.	Significant Poverty	16
3.	Type of Project	10
COMMUNITY ENGAGEMENT		
4.	Community Based Planning	18
5.	Employment or Volunteer Opportunities	6
6.	Partnerships or Committed Funding	3
OPERATION AND MAINTENANCE CONSIDERATIONS		
7.	Environmental Design	7
8.	Public Use Fees and Hours of Operation	5
SUMMARY ABOUT PROJECT NEED, BENEFITS, AND READINESS		
9.	Community CHALLENGES, Project Benefits and Readiness	20
MAXIMUM SCORE		100

Major lessons learned from the last round include selecting a park site that scores as highly as possible in criteria #1-3 especially- not just highly in one or two of them. (In the last grant round this is the only area we failed to gain the maximum number of points.)

The 13 sites below for your consideration are ranked in order of most competitive to least, and were given an estimated score for the first 3 criteria using the same scoring process that will be done with all applications across the state. This is only an estimate, as all applications will be ranked against each other, so the actual number cannot be known, and will be based on what other projects are submitted from across the state. This ranking is only amongst the 13 sites in Merced to see how they fared against each other.

Scoring Matrix (w/ Three Renovations Added-Not Yet Discussed)						
	Project Sites	Critical Lack of Park Space (Max 15 Pts.)	Significant Poverty A (Max 11 Pts.)	Significant Poverty B (Max 5 Pts.)	Type of Project (Max 10 Pts.)	Total Score (Max 41 Pts.)
	I St & 18th Street	13	11	4	10	38
	Rascal Creek Bike Path	11	9	5	10	35
	Santa Fe & G Street	15	7	3	10	35
*NEW TO CONSIDER	Charles Richard Drew	9	11	5	7	32
*NEW TO CONSIDER	Harriet Tubman	11	9	5	7	32
*NEW TO CONSIDER	Circle Drive	15	7	3	7	32
	Bob Hart Square	9	11	4	7	31
	Alfarata Ranch	15	3	2	10	30
	William Lloyd Garrison	13	5	3	8	29
To resubmit	Fahren's Creek Trail	15	1	1	10	27
	Partial Build CP-42	9	3	2	10	24
To resubmit	Lester K Yoshida	7	1	1	10	19
To resubmit	Charles Ogletree	5	1	1	10	17

8th St. and N. St.-Charles Richard Drew Renovation-Meets BOTH Criteria

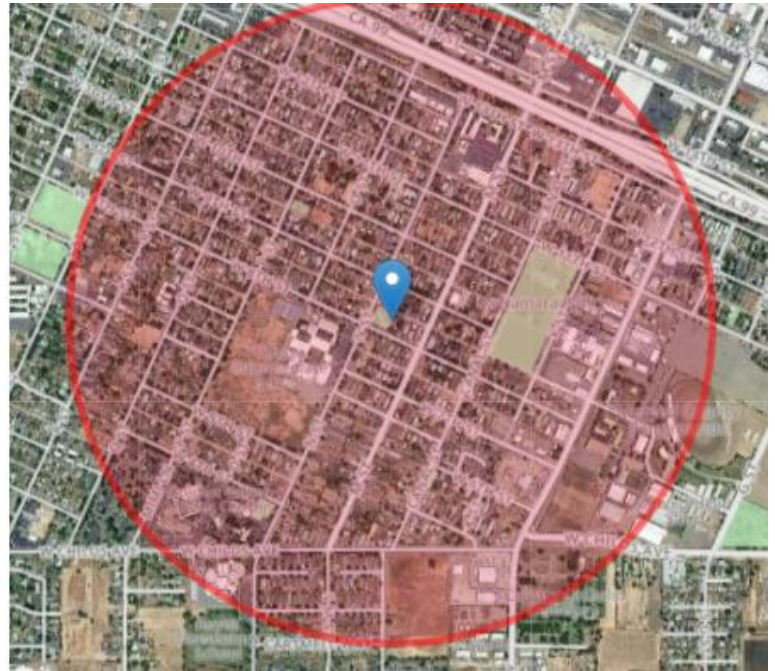
Median Household Income: \$24,678 (Difference of \$)

Number of People Living in Poverty: 2,430

Parks per 1,000: 1.89 (Difference of 1.11)

Results for Merced (County: Merced)

Latitude, longitude	37.2933279, -120.4909551	
Total Population	5,325	③
Youth Population	1,941	③
Senior Population	450	③
Median Household Income	\$24,678	③
Per Capita Income	\$10,626	③
People in Poverty	2,430	③
Households without Access to a Car	347	③
Parks total area	10.09 acres	③
Parks per 1000 people	1.89 acres	③



From the 2003 Park and Open Space Master Plan:

Charles Richard Drew Park

MP-9

Charles Richard Drew Park is one of the larger mini-parks, and contains just over a half acre. The park contains few amenities, but the play structure is larger than in most other mini-parks. This park is located diagonally across the street from Tenaya Middle School, which does not have a play area, and has good visibility because of its corner location.

It is recommended that this mini-park be upgraded so that it meets local recreation needs. Recommended upgrades include:

- Prepare a master plan for the site.
- Upgrade the play equipment, including installation of safety surfacing and curbing. If possible, provide two play areas for different age groups, including tots.
- Provide a path system within the park.
- Upgrade irrigation system.
- Provide additional trees and landscaping.
- Provide site amenities: signage, bike racks, waste receptacles, benches and picnic tables.

4th St. and N. St.-Harriet Tubman Renovation-Meets BOTH Criteria

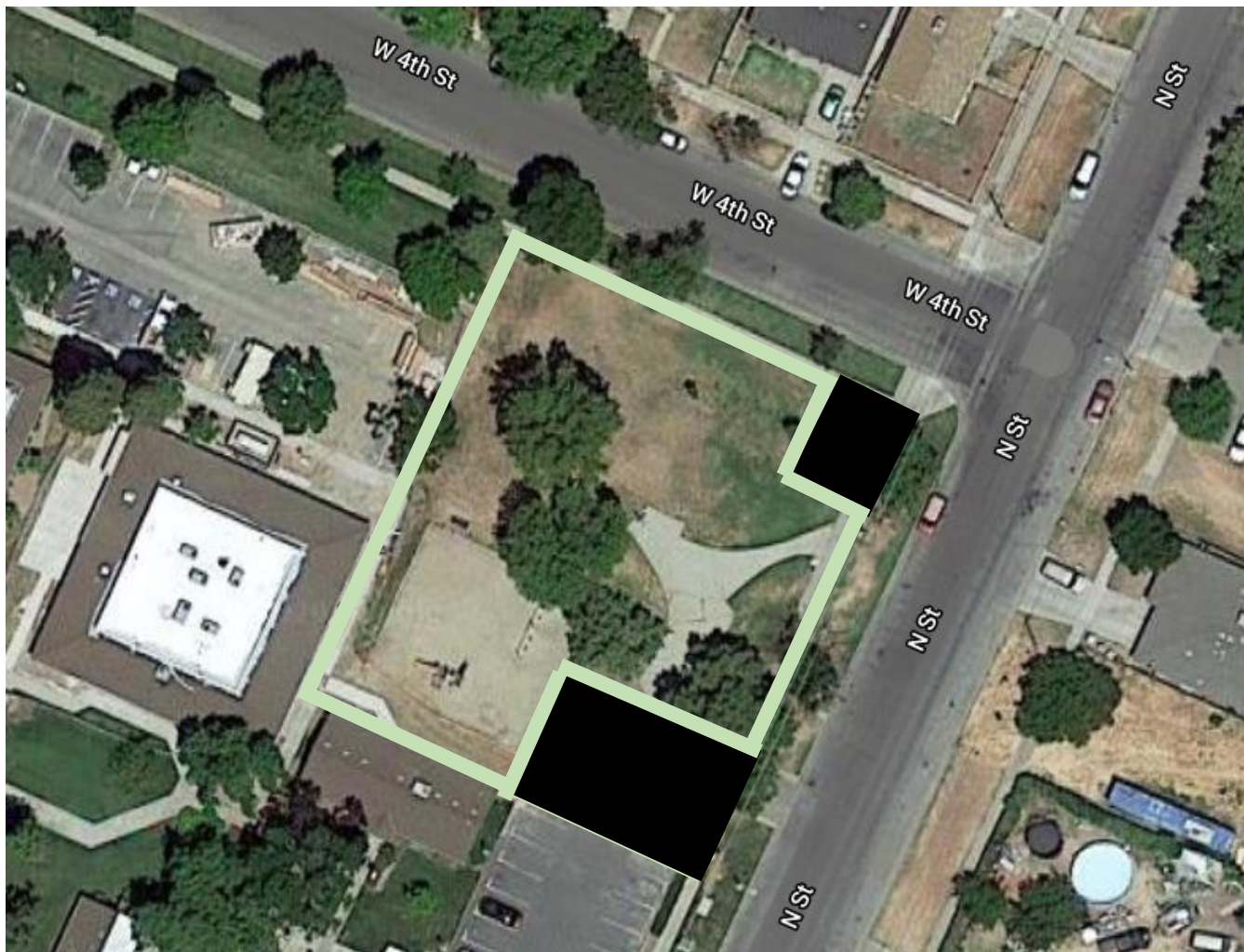
Median Household Income: \$33,260 (Difference of \$23,722)

Number of People Living in Poverty: 1,971

Parks per 1,000: 0.98 (Difference of 2.02)

Results for Merced (County: Merced)

Latitude, longitude	37.2889748, -120.4944420	
Total Population	4,913	ⓘ
Youth Population	1,807	ⓘ
Senior Population	448	ⓘ
Median Household Income	\$33,260	ⓘ
Per Capita Income	\$11,600	ⓘ
People in Poverty	1,971	ⓘ
Households without Access to a Car	219	ⓘ
Parks total area	4.82 acres	ⓘ
Parks per 1000 people	0.98 acres	ⓘ



From the 2003 Park and Open Space Master Plan:

Harriet Tubman Park

MP-8

This park is located adjacent to the Golden Valley Health Center and appears to get some use, unlike many of the other mini-parks. The main users are children who are visiting the Health Center. Tenaya Middle School and Charles Richard Drew Park are a few blocks away. The park is almost a half acre in size, and has a basketball backboard in addition to play equipment. Although it isn't a full half-court, the backboard seems to attract use.

Prior to making a final decision about the future of this park, the City should hold a meeting with surrounding neighbors (those within a ¼ mile of the park), and specifically with Golden Valley Health Center, to determine the recreational value of this site to neighbors and gain input on its future. There are four general options for this site:

- If the site is providing recreational value to surrounding neighbors, the City could upgrade and maintain it.
- If the site is providing recreational value to surrounding neighbors, the City could upgrade it and a neighboring property owner (such as the Health Center) or a private group could take over or pay for maintenance.
- If there is marginal recreational value, neighbors or other groups could pay for upgrades and maintenance. If there isn't interest, the City should sell the site.
- The site could be donated or sold and any proceeds used to upgrade a nearby park.

As an additional alternative, this site may be a good candidate to turn over to Golden Valley Health Center, if they are willing, since the park is essentially part of the Health Center site and appears to be mostly used by Health Center clients. The Health Center would then be responsible for maintenance and possibly for upgrades.

23rd and Circle Drive Park Renovation-Meets BOTH Criteria

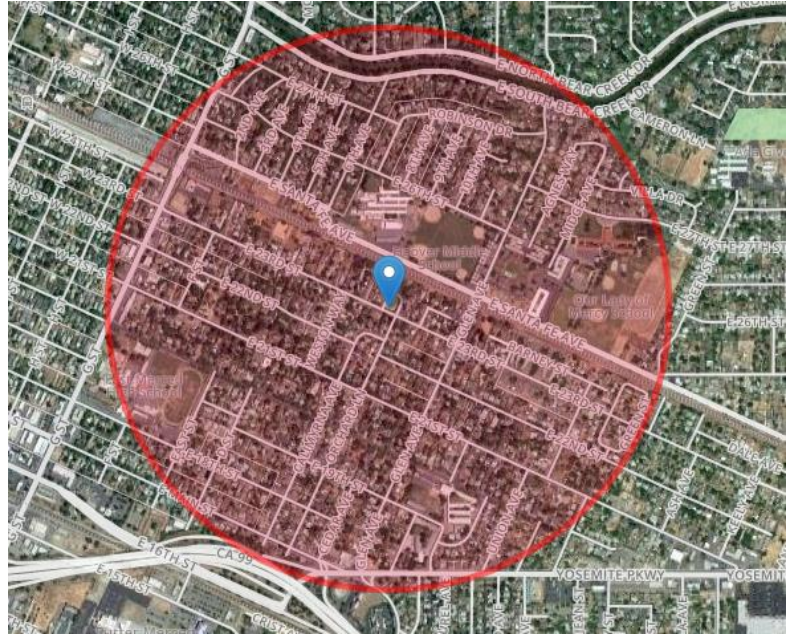
Median Household Income: \$42,653 (Difference of \$14,329)

Number of People Living in Poverty: 1,480

Parks per 1,000: 0.05 (Difference of 2.95)

Results for Merced (County: Merced)

Latitude, longitude	37.3020334, -120.4650664	
Total Population	4,846	i
Youth Population	1,364	i
Senior Population	551	i
Median Household Income	\$42,653	i
Per Capita Income	\$21,900	i
People in Poverty	1,480	i
Households without Access to a Car	151	i
Parks total area	0.26 acres	i
Parks per 1000 people	0.05 acres	i



Other Considerations: This is currently the only park in this area. The only option for creating a new park for these residents is the Santa Fe and G. site, which isn't a very ideal site. This is a small park with outdated equipment, and although a minipark, if renovated could potentially bring added value to residents.

From the 2003 Park and Open Space Master Plan:

Circle Drive Park

MP-10

Circle Drive Park is one of the most attractive and welcoming mini-parks. It is very visible from E. 23rd Street, and is surrounded by Circle Drive. Shade trees provide a canopy over the park. There are no other parks nearby.

It is recommended that this mini-park be upgraded so that it better meets local recreation needs. Recommended upgrades include:

- Prepare a master plan for the site.
- Upgrade the play equipment, including installation of safety surfacing and curbing. If possible, provide two play areas for different age groups, including tots.
- Provide a path system within the park.
- If space permits, provide a paved court area for basketball.
- Upgrade irrigation system.
- Provide additional trees and landscaping.
- Provide site amenities: signage, bike racks, waste receptacles, benches and picnic tables.

New Ranking of Ad Hoc Committee

Recreation and Park Commission Order of Preference						
	Project Sites	Critical Lack of Park Space (Max 15 Pts.)	Significant Poverty A (Max 11 Pts.)	Significant Poverty B (Max 5 Pts.)	Type of Project (Max 10 Pts.)	Total Score (Max 41 Pts.)
	I St & 18th Street	11	11	5	10	37
	Alfarata Ranch	15	5	3	10	33
	Partial Build CP-42	9	3	3	10	25
	Harriet Tubman	11	9	5	7	32
	Circle Drive	15	7	3	7	32
	William Lloyd Garrison	13	7	4	8	32
	Bob Hart Square	9	11	4	8	32
	Rascal Creek Bike Path	11	9	5	10	35
	Santa Fe & G Street	15	7	3	10	35
	Charles Richard Drew	9	11	5	7	32
To resubmit	Fahren's Creek Trail	15	1	1	10	27
To resubmit	Lester K Yoshida	7	1	2	10	20
To resubmit	Charles Ogletree	7	1	2	10	20



CITY OF MERCED

Merced Civic Center
678 W. 18th Street
Merced, CA 95340

ADMINISTRATIVE REPORT

File #: 20-489

Meeting Date: 9/28/2020

Report Prepared by: Jennifer Arellano, Recreation Supervisor, Parks and Recreation

SUBJECT: Discussion on Setting Commission Goals and Priorities

REPORT IN BRIEF

Discussion to set goals and priorities for the Recreation and Parks Commission.

RECOMMENDATION

Make a motion to set goals and priorities for the Recreation and Parks Commission.

ALTERNATIVES

1. Approve, as recommended by staff; or,
2. Deny; or,
3. Continue to a future meeting (date and time to be specified in the motion).

DISCUSSION

Commissioner Cardona requested an item to discuss setting goals and priorities for the Commission.

ATTACHMENTS

Council Goals Priorities FY 20-21



COUNCIL GOALS & PRIORITIES

FISCAL YEAR 2020 - 2021

1. Staffing (General Fund)

- * Measure C Transition – Sunsets in 2026
- * Public Safety – Code Enforcement / Dispatchers / Police Officers
- * Parks Maintenance Workers
- * Employee Compensation

2. Youth Programs (General Fund)

- * Youth / Recreation Programs
- * Community Outreach – Mobilize Volunteers
- * Additional Programs with Partnerships / Voucher Program (new)
- * 27th & K for Youth Services
- * Support for the Zoo
- * Fahrens Park Bike Project
- CP 42 – Soccer Fields
- Block Party Trailer

3. City Beautification (One-Time/General Fund)

- * Parks Maintenance & Playground Equipment
- * Public Art / Establish Arts and Cultural District
- * Substandard Properties / Refuse Collection
- * Welcome Signs / Entry Points
- * Public Spaces
- Neighborhood Specific Improvements

4. Local Streets (Measure V / STP / Local Transportation)

- * Overall Streets, Sidewalks, and Street Lights
- * Safe Routes to School – Childs Avenue
- * Parsons Avenue
- * Regional Projects – Hwy 59 Widening
- * Traffic / Pedestrian Safety

5. Future Planning

- * Police Station/Fire Station/Public Works Yard/Park Restrooms
- * Future Annexations/Growth of City/Sewer Master Plan
- * Quiet Zones/Rail Safety
- * Growing General Fund Reserves
- * Infill Development
- * City Outskirts Services/County Islands
- Rebranding Merced Neighborhoods
- Sign Code Update
- Public Facilities Fee Program Update

6. Economic Development

- * Industrial Development
- * Yosemite Travel
- * Enhanced Infrastructure Financing District (EIFD)
- Airport Development
- Economic Opportunity Zones - Prospects

7. Downtown

- * Substandard Properties / Store Fronts
- * Housing
- * Bob Hart Square Extension
- * Consistent foot patrols Parking Solutions / Trolley
- Parking Solutions / Trolley
- Property Based Improvement District (PBID)

8. Regional Transportation

- * High Speed Rail
- * ACE Train
- * Amtrak
- * Campus Parkway / Merced Loop System
- Bus Routes / Bus Stop Coordination

9. Sustainability

- * SGMA / IRWM Implementation
- * Flood Prevention
- * Groundwater Recharge
- * Surface Water Projects
- Climate Action Plan

10. Housing / Homelessness

- * Childs & B Street Project (119 units)
- * Gateway Terrace II Apartments (50)
- * Single-Family / Tri-Plex Opportunities
- * First-Time Home Buyer Education Program
- SB 2 Implementation Plan

11. Community Wellness

- * 16th Street / Motel Drive Issues
- * Neighborhood Watch
- * Expanded Citizen's Police Academy

12. Agency Partnerships

- * County – Navigation Center, Homeless Court, Drug Prevention, Public Health, Job Training, Youth Programs
- * UC Merced – Internships
- * Merced College – Job Training
- * Schools – Youth Programs, Activate Recreational Space

* Charter Review – Cash Basis Fund to be completed at FY 2020/21 Budget

* *Multi-Year Priority*



CITY OF MERCED

Merced Civic Center
678 W. 18th Street
Merced, CA 95340

ADMINISTRATIVE REPORT

File #: 20-490

Meeting Date: 9/28/2020

Report Prepared by: Jennifer Arellano, Recreation Supervisor, Parks and Recreation

SUBJECT: Needs Assessment Survey for Parks and Recreation Programming

REPORT IN BRIEF

Discussion on a potential process to evaluate Parks and Recreation programming.

RECOMMENDATION

Information only-no action needed.

DISCUSSION

Commissioner Curiel requested this item to discuss a potential process to determine what is working well and what needs improvement in Parks and Recreation programming in light of the 2003 Park and Open Space Master Plan.

ATTACHMENTS

1. 2003 Park and Open Space Master Plan Executive Summary

City of Merced

Park and Open Space Master Plan Final Draft



MOORE IACOFANO GOLTSMAN, INC.
412 NW 13th Avenue
Portland, OR 97209
503.297.1005
www.migcom.com

December 2003

2003



PARK AND OPEN SPACE MASTER PLAN

Executive Summary

INTRODUCTION

As the largest city in Merced County, Merced is a regional provider of park and recreation services. However, the current service level is lower than that of most California communities of similar size. One of the main questions addressed in this master planning effort was whether the City should attempt to improve the quality of life in Merced by providing a larger and more comprehensive park and recreation program.

The City has been fortunate in that its inventory of parks is good, and most existing neighborhoods are served by parks. The City also wisely pursued the development of an off-street bicycle trail system that is now widely viewed as a local treasure. However, in the absence of a plan for park acquisition and development, many of the newer parks are poorly designed, poorly located, or underdeveloped. The result is a park system that is underutilized in many cases. In addition, with the increase in new development, more parks are coming on-line, increasing the maintenance needs of the park system. In addition, the level of recreation programming (both public and private) in Merced is very low, and there are limited options available for residents.

This plan addresses community needs and charts a new direction for the City to take in the future. The City has the basis for an excellent park system, and the potential to develop comprehensive recreation programming. However, to provide a higher level of service to residents, the existing system needs improvement, as well as expansion to meet the expected population growth. In addition, an increased level of programming is needed to meet community recreation needs. With the current level of development in Merced, it is now time to expand the basics and go to the next level of park and recreation services.

EXISTING RESOURCES

The Merced park system consists of both active and passive recreational areas, including a variety of park types, as well as an extensive off-street bicycle path system. The City of Merced has approximately 187 acres of active parkland, more than 120 acres of linear parkland encompassing the stream corridors where the bike paths are located, and more than 29 acres of undeveloped parkland.

The bike trail system is contained in 4 creek corridors, and currently total 13.11 miles. Expansions to this system are planned, and funding is in place for some of them.

In Merced, the inventory of recreation facilities such as sports fields used by the public is relatively low, and the City itself provides only a few facilities. There are no gymnasiums owned by the City, except the McCombs Youth Center which is operated by the Boys and Girls Club. The City relies heavily on the local school districts for athletic fields and gymnasiums. The following facilities are available for public use in Merced:

- 23 youth softball/baseball fields (3 lighted);
- 5 adult softball fields (all lighted);
- 13 soccer fields (does not include open turf areas);
- 6 tennis courts; and
- 5,450 s.f. of pool space.

Other recreational sites in the planning area owned by public agencies include the Merced County Fairgrounds (owned by the State of California), Courthouse Park, and Flanagan Park, (both owned by Merced County). Lake Yosemite, also owned by Merced County, is located to the northeast of the planning area and is adjacent to the U.C. Merced campus.

COMMUNITY INPUT

The Park and Open Space Master Planning process incorporated community input in several ways.

These include:

- A public workshop
- A youth workshop
- Stakeholder interviews

A public workshop was held on the evening of June 10, 2003 in the Sam Pipes Room at the Merced Civic Center. Key findings are summarized below.

- The top three priorities identified by participants were:
 - City-wide trail system expansions
 - Outdoor sport field complex
 - More aquatic facilities (Pools and water playgrounds)
- Participants seemed to value the parks in the City and see them as an important component of quality of life. The trail system was cited as a major success by many.
- Generally, there appeared to be interest in the City's providing additional recreation programs and developing more partnerships, especially with the school districts.
- There was support for a mix of park facilities, with neighborhood parks within walking distance of most citizens.

On June 10, 2003, a noontime workshop for youth was held at McCombs Youth Center. Approximately twenty youth ranging from ages 7 to 18 were in attendance, with the majority of the group ages 10 and 11.

Participants identified swimming and waterslides; very active amusements such as skate parks; and concessions in parks their top activities and facilities to include in parks. Other input received through the youth workshop included a need to provide park facilities that accommodate people with disabilities.

In May, 2003, telephone interviews were conducted with stakeholders identified by the City of Merced Park and Open Space Master Plan project team. Key findings were:

- There is a perception of crime in the parks, and on the bike paths. The City needs to address

this, such as through increased policing or volunteer foot patrols.

- There is a lack of indoor recreation space. There is a need for gyms, classrooms, indoor meeting places, community rooms, and similar indoor spaces.
- The bike trail system is wonderful and should be expanded, especially toward U.C. Merced and Lake Yosemite.
- There should be parks within walking distance of most neighborhoods.
- There is a need for more programming, especially for youth.

PARK LAND AND FACILITY NEEDS

- It is recommended the City consider reducing its inventory of mini-parks because of the low use of these parks and the overlapping service areas.
- Based on the recommended service level, 8 additional neighborhood park sites are needed to serve the current city limits, and an additional 13 are needed to serve the planning area at build-out. However, 9 sites are already available or dedicated to park use.
- The majority of the current Merced city limits are served by the existing community and large urban parks. To provide community park service to the entire planning area, 4 additional community or large urban parks will be needed.
- In addition to other park land needs, land is needed for the following special use facilities: 2 youth centers, 2 recreation centers, and additional athletic complexes.
- There are opportunities to develop trails along linear corridors such as the Cottonwood Creek corridor and the northern portion of the Fahrens Creek corridor. In order to build out the City of Merced's off-street bikeway network as planned, approximately 65 acres of linear park land containing approximately 10.8 miles of trail are needed.
- Based on the recommended demand standard, 1 additional adult softball field is needed to serve current demand and a total of 6 additional fields would be required at build-out.
- It is recommended the city maintain about the current level of service for youth baseball and

softball fields. The supply and demand analysis showed that current needs can be served by the existing field inventory. A total of 17 additional fields will be needed to serve the City at build-out.

- Based on the recommended demand standard, there is a shortage of 3 soccer fields at this time. This will be reduced to a shortage of 2 fields once the new field at Joe Herb Park is complete. At build-out, a total of 17 additional soccer fields will be needed.
- Based on the supply and demand analysis, there is a need for additional gymnasium space. The recommended demand standard indicates a current need for 2 courts, with a need for the equivalent of a total of 11 courts at build-out.
- There is a need for additional pool space.

FACILITY PLAN

The Master Plan includes a facility plan that sets forth recommendations for existing parks, proposed new parks, and new facilities. Key points of the facility plan are summarized below:

- Due to their size, maintenance costs, and limited recreational value, additional mini-parks are not recommended. In addition, the City should consider reducing its current inventory of this park type by either selling some sites or acquiring additional land to make them into neighborhood parks.
- Improvements are proposed to most of the City's neighborhood parks, with major improvements proposed for Burbank Park.
- Land is available for eight new neighborhood parks, but the parks need to be designed and developed.
- Thirteen new neighborhood parks will require land acquisition, as well as planning and park development.
- Upgrades are proposed to the City's existing community and large urban parks, including McNamara, Joe Herb, and Applegate. Development of Fahrens Park as per the master plan is proposed.
- Four new community parks are proposed, including a 40 acre site in south Merced and three 20 acre sites in north Merced. These sites are intended to serve new growth in the community.

- Two new indoor recreation centers and two new youth centers are proposed.
- A second adult softball complex is proposed, preferably to be located in north Merced.
- A soccer complex is proposed for inclusion in the new community park in south Merced, site CP-42. This site should be about 20 acres in size, and should include lights on at least a portion of the fields.

OTHER RECOMMENDATIONS

- The City should work with local leagues and any new leagues that may form to establish a Sports Council that will develop policies for field scheduling and other field sports-related topics. This group should include representatives from all field sports, and should meet regularly (at least quarterly).
- The City should consider moving the Zoo from Applegate Park to another site in the long term.
- Improve park security. In addition to park design improvements, this can be accomplished by regular patrol of bike paths and parks by police bike patrols, volunteer, Explorers, or paid park rangers.
- Increase recreation programs and classes. Target areas include more programs for adults, fitness programs, youth at-risk programs, arts and crafts, special one day events, cultural events, day camps, sports instructional programs, indoor instruction and special interest classes. Another potential program area is additional recreational sports, especially for youth.
- Implement a computerized program registration program, preferably one that allows registration via the internet, to increase the level of customer service.
- Establish cost recovery goals for each program area. Track revenues and expenditures for each program area so that cost recovery can be evaluated routinely.
- Improve the level of park design.
- Adopt specific restroom policies about when and where restrooms will be provided, and what type they will be. The policies will help reduce vandalism and improve safety in park restrooms.

CAPITAL IMPROVEMENT OPTIONS

This plan is intended to be a twenty to twenty-five year document. A short-term six year capital improvement plan is proposed for initial implementation of the plan. It is anticipated that work on the park system would continue beyond the initial 6 year strategy, and that successive CIPs would continue to be prepared and updated.

Two approaches to financing the Plan are presented: a pay-as-you-go approach based on availability of grants and local funding and a more aggressive approach based on a voter-supported tax measure paying for selected improvements. There are numerous other options and combination of options to accomplish the Plan.

Option 1 (Pay As You Go Approach):

Due to the current economic climate and the limited available resources, Option 1 will continue on as in the past and proceed based on a pay-as-you-go approach. Using this approach, the City will only fund smaller capital projects. Large capital projects, such as a recreation center or acquisition of land for the South Merced Community Park, will be deferred until funds are appropriated to develop multimillion dollar projects. This is the recommended approach for the near future. The table below lists the capital projects proposed under Option 1.

Project Name	Opinion of Probable Cost	Comment
Charles Richard Drew Park	\$147,000	Upgrade
Santa Fe Strip N'hood Park	\$601,500	Development
Flanagan Park	\$300,000	Upgrade
Alfarata Ranch	\$316,845	Partial Development
New Neighborhood Park	\$800,000	Partial development
New Neighborhood Park	\$800,000	Partial development
New Neighborhood Park	\$800,000	Partial development
Ada Givens Park	\$270,000	Upgrade
McNamara Park	\$340,000	Upgrade
Fahrens Park	\$940,000	Development
New Community Park	\$5,290,000	Acquisition/Dev.
Bikeway development and improvements	\$543,630	Development
Total Expenditures	\$11,148,975	

Option 2 (More Aggressive Tax-Supported Approach):

The second approach is more ambitious and assumes that certain key projects, such as acquisition of Site CP-42, the South Merced Community Park, would occur in the first six-year period. This approach will require a voter-supported tax measure to implement, and a citywide Landscaping & Lighting District is the proposed financing mechanism. The cost of an L&L district to raise \$6 million in capital project funds is projected to be approximately \$22 per household annually. Due to the current economic climate, it is not recommended that the City pursue tax-supported financing at the present time, but that this be reevaluated in a few years if the economy improves.

Option 2 includes two major projects: acquisition of 40 acres for the South Merced Community Park and development of the North Recreation Center. It is important to secure the property for the South Merced Community Park while the land is still available and reasonably priced. The North Recreation Center is also proposed as part of this CIP to meet the community's pressing indoor recreation needs and to provide park service in an underserved area.

The table below lists the capital projects proposed under Option 2.

Project Name	Opinion of Probable Cost	Comment
Charles Richard Drew Park	\$147,000	Upgrade
Santa Fe Strip N'hood Park	\$281,500	Partial development
Flanagan Park	\$300,000	Upgrade
Alfarata Ranch	\$316,845	Partial Development
New Neighborhood Park	\$800,000	Partial development
New Neighborhood Park	\$800,000	Partial development
New Neighborhood Park	\$800,000	Partial development
Ada Givens Park	\$270,000	Upgrade
McNamara Park	\$340,000	Upgrade
Fahrens Park	\$940,000	Development
S. Merced Community Park	\$2,000,000	Land acquisition
New Community Park	\$5,290,000	Acquisition/dev.
North Recreation Center	\$4,500,000	Acquisition/dev.
Bikeway Development/improvements	\$543,630	Development
Total Expenditures	\$17,328,975	

This page is left intentionally blank.

Preface

This report is a long-range guide for park and recreation services in Merced. Once adopted, it will give the City direction and policies for acquiring and developing parks, open space, trails, and other recreational facilities.

As the largest city in Merced County, Merced is a regional provider of park and recreation services. However, the current service level is lower than that of most California communities of similar size. One of the main questions addressed in this master planning effort was whether the City should attempt to improve the quality of life in Merced by providing a larger and more comprehensive park and recreation program. The City has been fortunate in that its inventory of parks is good, and most existing neighborhoods are served by parks. The City also wisely pursued the development of an off-street bicycle trail system that is now widely viewed as a local treasure. However, in the absence of a plan for park acquisition and development, many of the newer parks are poorly designed, poorly located, or underdeveloped. The result is a park system that is underutilized in many cases. In addition, with the increase in new development, more parks are coming on-line, increasing the maintenance needs of the park system. In addition, the level of recreation programming in Merced is very low, and there are limited options available for residents.

As with the rest of California and the United States in general, Merced has experienced general budget constraints within recent years. In addition, the average income in Merced is lower than in Merced County and much lower than in the State of California, which means that the population has a need for affordable recreation and less disposable income to pay for it. Compounding the budgetary challenge is several years of instability in the organization of park and recreation services in Merced. The result is a disconnect between parks and recreation, a lack of recreation programming, and a park system that is underdeveloped. With the exception of several that are highly used, many of the parks require renovation and or substantial upgrades to improve their quality and usability.

This plan addresses community needs and charts a new direction for the City to take in the future. The City has the basis for an excellent park system, and the potential to develop comprehensive recreation programming. However, to provide a higher level of service to residents, the existing system needs improvement, as well as expansion to meet the expected population growth. In addition, an increased level of programming is needed to meet community recreation needs. With the current level of development in Merced, it is now time to expand the basics and go to the next level of park and recreation services.

This page is left intentionally blank.



CITY OF MERCED

Merced Civic Center
678 W. 18th Street
Merced, CA 95340

ADMINISTRATIVE REPORT

File #: 20-552

Meeting Date: 9/28/2020

Report Prepared by: Jennifer Arellano, Recreation Supervisor, Parks and Recreation

SUBJECT: Discussion on the Use of Participatory Budgeting for Measure Y Revenue and Making a Recommendation to the City Council for Budgeting Future Measure Y Revenues

REPORT IN BRIEF

Discussion on the possibility of using a participatory budgeting process for the Measure Y revenue.

RECOMMENDATION

Discuss participatory budgeting and make a motion to make a recommendation to city council for budgeting future Measure Y revenues.

ALTERNATIVES

1. Approve, as recommended by staff; or,
2. Deny; or,
3. Continue to a future meeting (date and time to be specified in the motion).

DISCUSSION

Commissioner Cardona requested an item to discuss participatory budgeting for Measure Y revenue, and to make a recommendation to City Council.



CITY OF MERCED

Merced Civic Center
678 W. 18th Street
Merced, CA 95340

ADMINISTRATIVE REPORT

File #: 20-551

Meeting Date: 9/28/2020

Report Prepared by: Jennifer Arellano, Recreation Supervisor, Parks and Recreation

SUBJECT: Discussion and Recommendation to the City Council on Ways of Making Parks More Youth Friendly

REPORT IN BRIEF

Discussion on making parks more youth friendly.

RECOMMENDATION

Make a motion to recommend to city council specific changes to make parks more youth friendly.

ALTERNATIVES

1. Approve, as recommended by staff; or,
2. Deny; or,
3. Continue to a future meeting (date and time to be specified in the motion).

DISCUSSION

Commissioner Cardona requested an item to discuss making parks more youth friendly, and to make a recommendation to City Council.

ATTACHMENTS

1. Parks for Teens Article

Parks for Teens: 10 Features Teens Want to See

Published on 02-12-2015 at 10:08

<https://www.childinthecity.org/2015/12/02/parks-for-teens-10-features-teens-want-to-see/>

In many parts of the world, park designers have turned to nature play as a way to foster connections to nature, increase social and cooperative play, and facilitate more physical activity. In many instances, these parks are designed for pre-teen children.

Like more traditional playgrounds, these spaces often exclude teenagers through their design. Yet in a variety of projects facilitated by [Growing Up Boulder](#) – a child-friendly city initiative in Boulder, Colorado, USA – teens have requested parks where they feel welcome and that have design features that can integrate them into a broader public sphere. For example, in a participatory process with Junior Rangers involved in Boulder’s open space planning, teens found a city playground at the edge of open space land. Designed for much younger ages, teens found creative means to play with toddler swings and other equipment. In discussion, one of the teens said, “We want parks for teens, too. I am so tired of having moms yell at us.”



10 teen-friendly features:

The City of Boulder’s Parks and Recreation department and Youth Opportunities Advisory Board asked teens what features they would want to see in city parks. This list is also consistent with Growing Up Boulder’s participatory work with teens for public space planning and neighborhood design. Ten of the most consistent features teens in Boulder have requested for public space include:

1. **WiFi** – Teens repeatedly have said they would like a study space with shelter from rain and tables to work in groups. WiFi is a critical aspect of this, as well as for accessing music and other media with phones.
2. **Movie Nights** – Teens like the idea of a central performance space that can show a wide range of movies for all ages and interests.

3. **Food Trucks and Cafés** – From tacos to coffee, teens want access to affordable and diverse food options, representing a variety of cultures and food interests.
4. **Interactive Lighting and Art** – Teens are drawn to interactive spaces, whether they be interactive lights (as found in the New York City's Pulse Park), or interactive sculptures that allow climbing or play. In response to a solar-powered giraffe sculpture, one teen suggested providing a whole field of African animals that were interactive, such as hippo that spits water or a crocodile to climb on. Importantly, teens not only wanted interactive art pieces (that light or are otherwise playful), but they also wanted places where the public could create the art, such as a graffiti wall, mural wall, or inspirational chalk board with questions such as "What do you love about Boulder?" or "What are your goals?" (Growing Up Boulder 2015).
5. **Play Spaces for both Children and Adults** – Many teens want to play, but do not feel free to do so in playgrounds designed with structured equipment for specific ages. Parks that mix play types are more effective at enabling teen play. For example, at Lizard Log Park, designed by Fionna Robbe in Western Sydney Parklands, Australia, large swings that require cooperation also facilitate more teen play. Other types of play spaces that teens request include fields for pick-up games of soccer or ping-pong tables. Younger teens consistently ask for more active forms of play, such as zip lines or parkour courses that allow risk taking (Growing Up Boulder 2015).
6. **Study Space** – As mentioned for WiFi in parks, teens repeatedly request places where they can hang out and complete school work together outside. These spaces could be simple picnic tables that have some shelter from the elements, a grove of trees with tables and benches, or a tree house for teens. In a public space planning project in Boulder, elementary students wanted a treehouse from which they could read, watch the creek, and listen to birds. At the end of the process, teens also said such a place was important for them, stating: "treehouses are for teens, too!" (Growing Up Boulder 2015).
7. **Trees, Flowers, Nature** – Teens also consistently say that they enjoy being in nature while spending time with their friends. In this case, nature often serves as a backdrop for other experiences, but is appreciated for its aesthetic and restorative qualities, nonetheless. Teens envisioned a study space in a grove of trees, which is part of the City of Boulder's new Civic Area plan. Like many of the features in this list, teens wanted to see natural features integrated with other functions, such as studying. Some other examples include a koi pond or a pond with colored lights.
8. **Music Events** – In a small neighborhood park designed for and by teens in Malmö, Sweden, music was an integral feature. The park allows teens to hook up their own phone to a musical system with speakers, lights, and interactive benches, which allow teens to select music, hang out, and dance. There are time and volume limits on these features to respect the neighborhood's needs for quiet and darkness at night. At times, we have heard from teens that they don't go to parks because they are "for little kids." When we showed them the park from Malmö, they said, "can we have one of those here, too?"
9. **Lighting and safety features** – Teen girls in particular, request lighting and emergency call boxes for safety. This can extend the length of time teens have access to the park and can also provide an enjoyable walk through public spaces instead of going around it during dusk or darkness.
10. **Water features** – Teens repeatedly request features for water play with younger siblings and friends as well as water fountains for sound and visual interest. This can be highly designed fountains, such as the Crown Fountain in Millennium Park, Chicago or simple creek play, with boulders to hop across. Many teens with roots in Latin America particularly like fountain features, which bring a cultural consistency from many Latin American plazas.

Fortunately, many of these features are part of contemporary public space designs. As an example, the City of Boulder's recent master plan also incorporates many of these features. A challenge is thinking about how to integrate these features into other public spaces and small parks throughout a city so that teens feel welcome wherever they go.



Why parks are important for teens

As the world's cities become increasingly dense, concerns have emerged at decreasing allocation, types of social interactions, and inclusivity of public space (Day and Wagner 2010, Madanipour 2010). Young people, in particular, are less tolerated in public spaces (Day and Wagner 2010) and can be marginalized in public processes for these spaces (Vivoni 2013). Teen girls, in particular, are isolated from public space (Loukaitou-Sideris and Sideris 2010).

Many people assume that teens want to be separated from the rest of society, but child-friendly research has not found this to be true: teens want to be integrated into public spaces, and they want to see public spaces designed for everyone (Bourke 2015, Breitbart 2014, Derr and Kovács in press). This is particularly significant in the context of adolescent development. When we isolate teenagers from other age groups and parts of society, we increase teen alienation, indifference, dysfunction, and antagonism in the younger generation (Bronfenbrenner and Condry 1970). And it goes against what teens consistently request, which is a place for all ages.

Author: Victoria Derr

References:

Bourke, Jackie. 2014. "‘No Messing Allowed’: The Enactment of Childhood in Urban Public Space from the Perspective of the Child." *Children, Youth and Environments* 24(1): 25-52.

Breitbart, Myrna Margulies. 2014. "Inciting Desire, Ignoring Boundaries and Making Space: Colin Ward's Considerable Contribution to Radical Pedagogy, Planning and Social Change." In *Education, Childhood and Anarchism: Talking Colin Ward*, edited by Catherine Burke and Ken Jones, 175-185. Abingdon: Routledge.

Bronfenbrenner, Urie, and John C. Condry Jr. 1970. *Two worlds of childhood: US and USSR*. (1970).

Day, R. and Wagner, F. 2010. Parks, streets and 'just empty space': the local environmental experiences of children and young people in a Scottish study. *Local Environment: The International Journal of Justice and Sustainability* 15 (6), 509-523.

Derr, V. and I. Kovács. How participatory processes impact children and contribute to planning: A case study of neighbourhood design from Boulder, Colorado, USA. *Journal of Urbanism: International Research on Placemaking and Urban Sustainability*. In Press.

Growing Up Boulder. 2015. Civic Area Participatory Planning: Young People's Ideas and Views for the Civic Area in Boulder. A Report Submitted to City of Boulder Parks and Recreation, Boulder City Council and Planning Boards. www.growingupboulder.org/civic-area-2014.html

Loukaitou-Sideris, A., & Sideris, A. (2009). What Brings Children to the Park? Analysis and Measurement of the Variables affecting Children's use of the Parks. *Journal of the American Planning Association*, 76(1), 89-107.

Madanipour, A. ed., 2010. *Whose public space? International case studies in urban design and development*. Abingdon: Routledge.

Vivoni, F. 2013. Waxing ledges: built environments, alternative sustainability, and the Chicago skateboarding scene. *Local Environment* 18(3), 340-353.

Photo Credits:

Teens on Toddler Equipment (Victoria Derr); A Place for all Ages (Stephen Cardinale);

Main photo by Sharon Mollerus ([/www.flickr.com/photos/clairity/149217672/](https://www.flickr.com/photos/clairity/149217672/))



ADMINISTRATIVE REPORT

File #: 20-550

Meeting Date: 9/28/2020

Report Prepared by: Jennifer Arellano, Recreation Supervisor, Parks and Recreation

SUBJECT: Discussion Regarding the Feasibility of Utilizing the Senior Center as a Youth Center After the Conclusion of all Senior Programming

REPORT IN BRIEF

Discussion on the feasibility of using the Senior Center after hours as a youth center.

RECOMMENDATION

Information only-no action needed.

DISCUSSION

Commissioner Cardona requested this item to discuss the feasibility of utilizing the Merced Senior Center, located at 755 W. 15th Street, as a youth center for teens after 3pm when all senior programming is concluded. Senior programming normally runs Monday-Friday from 9am-3pm, but is currently suspended due to the Covid-19 pandemic. The last regular senior center program calendar from March 2020 is attached for your information.

Additionally, the facility is normally rented to the public in the hours senior programming is not offered, but is also currently suspended due to the pandemic. This facility is very popular for rentals, as it is the nicest and largest one the City has. Typical rental schedule includes: a regular church group that meets Sundays from 10 AM to Noon, and Wednesday nights from 7:30 PM-9:30 PM; social dance on the fourth Sunday of the month from 1 PM to 5 PM; Zumba on Mondays and Wednesdays from 5:30 PM to 6:30 PM. Additionally, the facility is occasionally requested for late afternoon or early evening meetings on weekdays beginning around 4:30 PM to 6 PM several nights a month. Most weekends and Friday nights the facility is rented and would not be available for alternate programming.

ATTACHMENTS

1. March 2020 Senior Center Calendar

Services	9:00a - 3:00p	Library, Poolroom, Computer Room [assistance by appointment]
-----------------	---------------	--

Weekly Activities & Monthly Meetings

Mon	9:00a - 10:15a	Mat Yoga (except 3/2)	Main Hall-1
	9:00a - 2:45p	Duplicate Bridge (10:30a start)	Main Hall-3
	9:00a - 2:45p	Pinochle	Room A
	9:15a - 1:00p	Bridge	Room C
	11:00a - 12:30p	Line Dancing-Beginner	Main Hall-1
	12:30p - 2:30p	Partner Dance Class	Main Hall-1
Tue	8:30a - 12:30p	TAX-AIDE FREE Tax Preparation	Main Hall-2/3
	9:00a - 10:15a	Chair Yoga	Main Hall-1
	9:00a - 2:45p	Canasta	Room A
	9:00a - 2:45p	Oh Hell / Mexican Train	Room C/Pool Rm
	10:00a - 2:45p	Woodcarvers	Room A
	10:30a - 12:00p	3/17 - Senior Inc Board (3rd Tue)	Room C
	12:00p - 2:00p	Tai Chi	Main Hall-1
Wed	9:00a - 10:15a	Mat Yoga (except 3/25>Room C)	Main Hall-1/Room C
	9:00a - 12:00p	3/25 - AARP	Main Hall-1/2/3
	9:30a - 12:00p	Writers Group	Room A
	10:00a - 12:00p	3/4 - AARP Board (1st Wed)	Room C
	10:30a - 12:00p	3/4 - IBEW (1st Wed)	Main Hall-2
	11:00a - 12:00p	Line Dancing-Beginner (except 3/25)	Main Hall-1
	12:00p - 2:30p	Line Dancing-Regular (except 3/25)	Main Hall-1
	12:00p - 2:30p	3/25 - Lunch & Dance (4th Wed)	Main Hall-3/1
	12:00p - 2:45p	Arts, Crafts, Needlework	Room A
Thu	1:00p - 2:45p	South Merced Community	Room C
	8:30a - 12:30p	TAX-AIDE FREE Tax Preparation	Main Hall-2/3
	9:00a - 10:15a	Chair Yoga	Main Hall-1
	9:00a - 2:45p	Pinochle	Room A
	9:00a - 2:45p	Oh Hell / Mexican Train	Room C/Pool Rm
	11:00a - 2:30p	3/5, 3/19 - Womens Bridge	Main Hall-1
Fri	9:00a - 2:45p	Senior Social Club & Bingo	Main Hall-1/2/3
	9:00a - 2:45p	Duplicate Bridge (10:30a start)	Room C
	10:00a - 11:15a	3/27 - Senior Social Club Board (4th Fri)	Room A



ADMINISTRATIVE REPORT

File #: 20-475

Meeting Date: 8/24/2020

Report Prepared by: Jennifer Arellano, Recreation Supervisor, Parks and Recreation

SUBJECT: Discussion on Sports Park Usage Policy

REPORT IN BRIEF

Discussion on a sports park usage policy suggested by Merced Soccer Association

RECOMMENDATION

Information only-no action needed.

DISCUSSION

At the July 27th 2020 Recreation and Parks Commission meeting, Jovan Pulido of Merced Soccer Association presented a sports park usage policy during the public comment portion of the meeting. During the request to add items to future agenda portion of that same meeting, Vice Chair Yesenia Curiel requested to add an item to discuss the suggested policy. The item was placed on the August meeting agenda, but was tabled until this meeting.

ATTACHMENTS

1. Sports Park Usage Policy presented by Jovan Pulido of Merced Soccer Association

Parks and Recreation
7-27-2020

Sports Park Usage Policy

To satisfy all possible transparency issues, the City of Merced sponsored YSOs will be allotted annual field usage time as a percentage. This policy will be for sports that are during the same season and will be based on verified youth registration numbers as of October 1 of each year. The numbers must be verified and approved by this Commission. The time percentage will be allotted annually as of January 1.

Example of total 2,000 players.

YSO A has 1,500 verified participants in their non profit sports program.

YSO B has 500 verified participants in their nonprofit sports program.

YSO A = has 75% total players, & will be allotted 75% of field usage.

YSO B has 25% total players, & will be allotted 25% of field usage.



ADMINISTRATIVE REPORT

File #: 20-548

Meeting Date: 9/28/2020

Report Prepared by: Jennifer Arellano, Recreation Supervisor, Parks and Recreation

SUBJECT: Provide Direction to Staff for Use of Stephen Leonard and McNamara Youth Centers After the Current Contracts Expire Including, but not Limited to, Renewing Contracts with Current Tenants, Conducting A Request for Interest for Use of the Centers, or Making a Recommendation that Staff Offer Programming at one of the Sites

REPORT IN BRIEF

Considers making a motion to direct staff on how to proceed with expiring leases at Stephen Leonard and McNamara Youth Centers.

RECOMMENDATION

Make a motion recommending how to proceed with expiring leases at Stephen Leonard and McNamara Youth Centers.

ALTERNATIVES

1. Approve, as recommended by staff; or,
2. Deny; or,
3. Continue to a future meeting (date and time to be specified in the motion).

DISCUSSION

The Stephen Leonard Youth Center and McNamara Youth Center Leases are expiring September 30, 2020. Staff is seeking direction from the Commission on whether to renew contracts with current partners, to publish a Request For Interest for the Centers to determine if there are other community groups interested in leasing the centers to provide youth services, or if the department should again offer programming out of one of the buildings.

McNamara Youth Center, located at 1040 Canal Street and Stephen Leonard Youth Center, located at 640 T. Street, were originally used by the Parks and Recreation Department to offer after school programs, youth activities and other events. However, due to budget cuts, the department has not offered regular programming at the sites since 2012.

In 2014, in order to see the sites utilized, City Council directed staff to find community groups interested in leasing both buildings in order to offer drop-in youth services at the centers. In December of 2014, McNamara Youth Center was leased to 4 community groups, including: Symple Equazion, MOJO, Lifeline CDC, and Merced Calvary Assembly of God. By the time the contract was due for renewal, only Symple Equazion and MOJO remained in the building. Contracts were renewed with both tenants until 2018 when only Symple Equazion remained in the building offering youth

services and after school programming, and has continued until the current time.

In August of 2015, Stephen Leonard Youth Center was leased to Soccer Academy of Merced, Inc. Contracts were continually renewed with the leasee until the current time.

The Parks and Recreation Department could offer programming out of one of the buildings if the next disbursement of Measure Y funds were budgeted for this purpose. Staff is asking Commissioners for direction as to the next steps for the use of these two buildings.