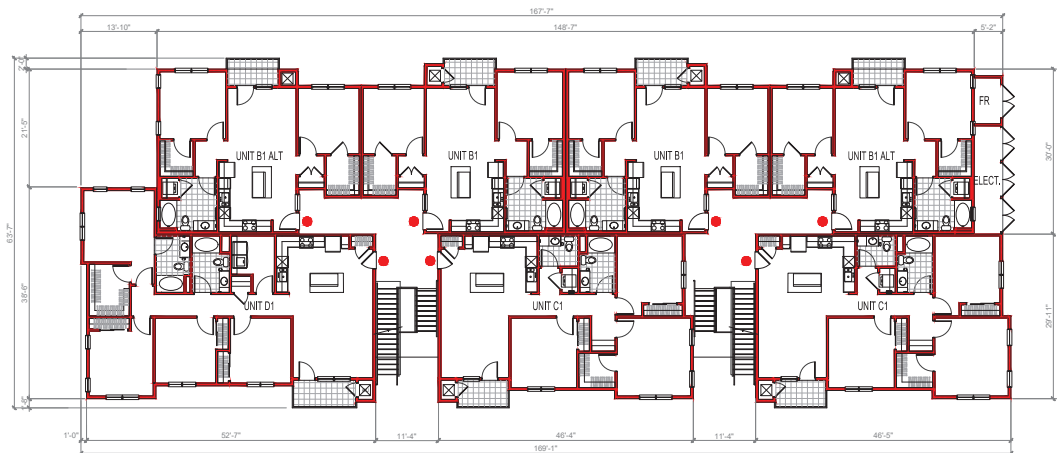


● MAIN ENTRY

SECOND / THIRD FLOOR



UNIT	#UNITS	#BR	#BATH
B1	6	2	1
B1 ALT	6	2	1
C1	6	3	1.5
D1	3	4	2
TOTAL	21 UNITS		

FIRST FLOOR

BUILDING TYPE - A (21PLEX)

Scale: 3/32" = 1'-0"

BUILDING PLAN
PARSON AVENUE SITE
 MERCED, CA.

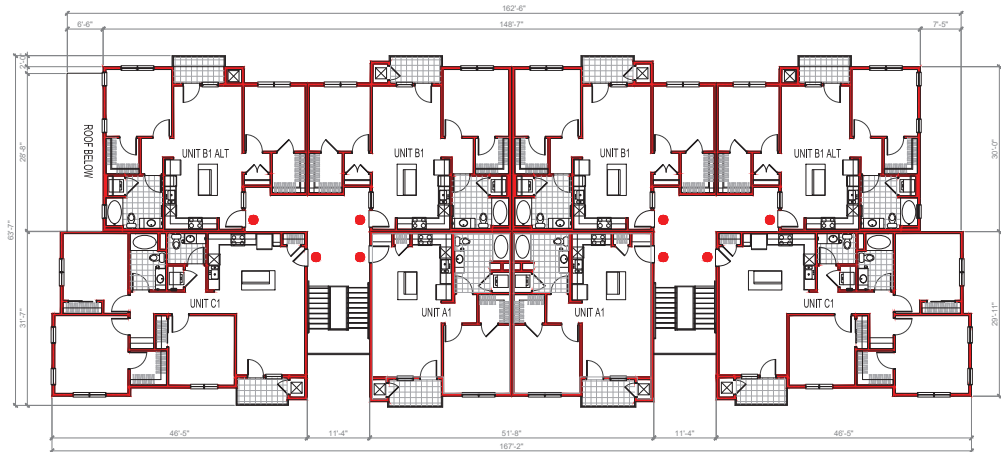


ATTACHMENT 4

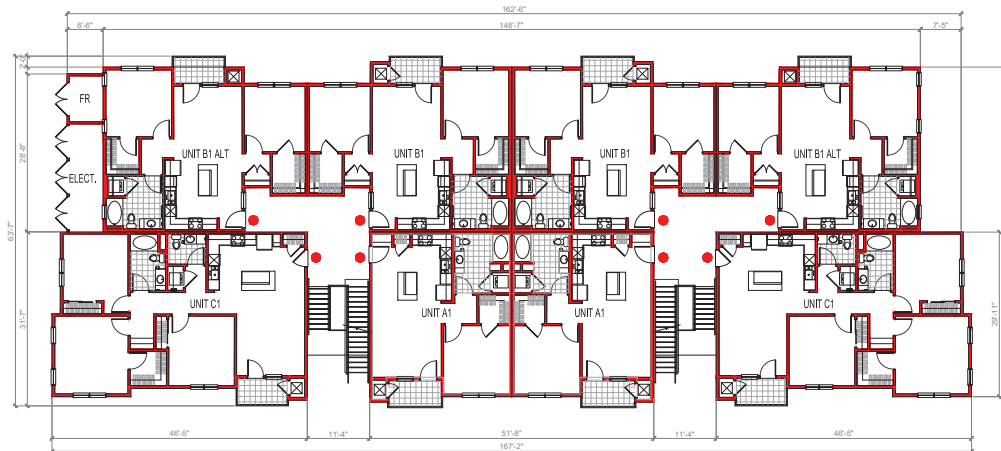
VISIONARY HOME BUILDERS
 Sacramento, CA.

The drawings presented are illustrative of character and design intent only, and are subject to change based upon final design considerations (i.e. applicable codes, structural, and MEP design requirements, unit plan / floor plan changes, etc.) © 2021 BSB Design, Inc.

November 30, 2021 | MR210193.00



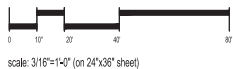
SECOND / THIRD FLOOR



FIRST FLOOR

● MAIN ENTRY

UNIT	#UNITS	#BR	#BATH
A1	6	1	1
B1	6	2	1
B1 ALT	6	2	1
C1	6	3	1.5
TOTAL	24 UNITS		



VISIONARY HOME BUILDERS
Sacramento, CA.

BUILDING TYPE - B (24PLEX)

Scale: 3/32" = 1'-0"
BUILDING PLAN
PARSON AVENUE SITE
MERCED, CA.



The drawings presented are illustrative of character and design intent only, and are subject to change based upon final design considerations (i.e. applicable codes, structural, and MEP design requirements, unit plan / floor plan changes, etc.) © 2021 BSB Design, Inc.

November 30, 2021 | MR210193.00