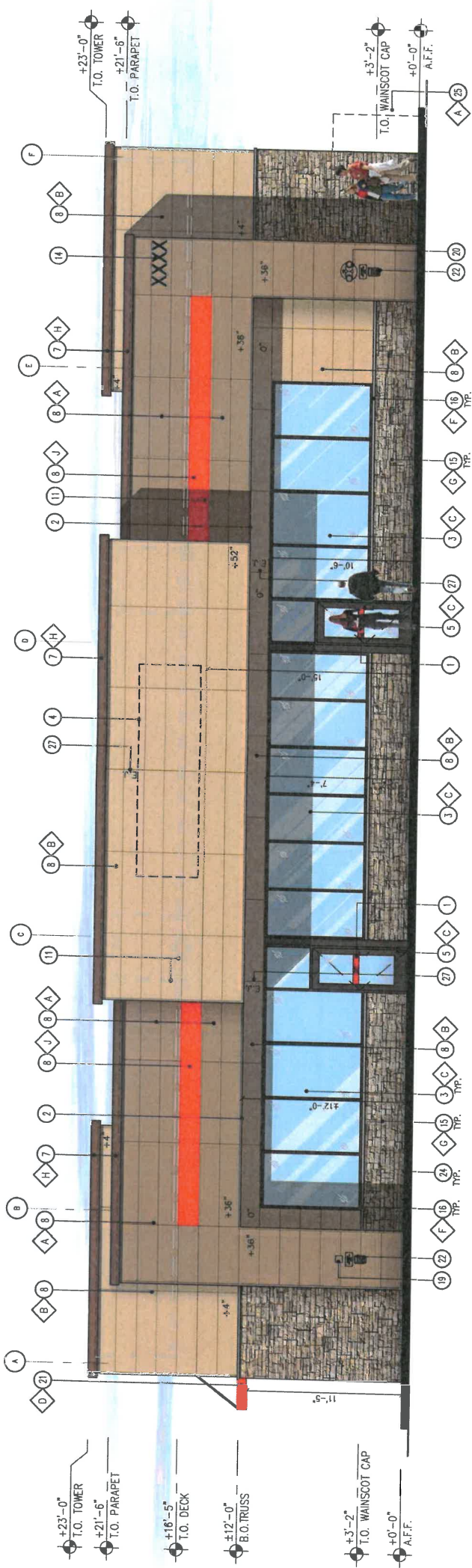


KEY NOTES

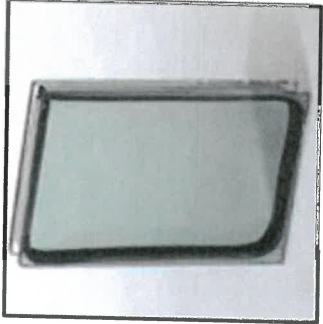
1. DOOR DECAL PROVIDED AND INSTALL BY GRAPHIC VENDOR
2. LINE OF CANOPY / SOFT
3. DARK BRONZE ANODIZED WINDOW FRAME W/ GRAY TINTED GLASS PER SOUTHERN SOUTHWEST SPEC.
4. INTERNALLY ILLUMINATED SIGN (UNDER SEPARATE PERMIT)
5. DARK BRONZE ANODIZED DOOR W/ GRAY TINTED GLASS STOREFRONT SYSTEM
6. SERVICE DOOR, PAINT TO MATCH SURROUNDING WALL
7. PRE-FINISHED SIP METAL FACIA CORING
8. NICHHA FIBER CEMENT WALL PANEL SYSTEM
9. WALL MOUNTED LIGHT FIXTURE COLOR BRONZE
10. SEE PANEL LOCATION
11. ROOF LINE AND HVAC UNITS
12. 1-1/2" NICHHA CORNER KEY EDGE, TYP. TO ALL CORNERS
13. ROOF DRAIN TAIL OVERFLOW
14. APPROXIMATE LOCATION OF 1/2" HIGH BLACK NUMBERS FINAL USA LOCATION TO BE DETERMINED BY FIRE DEPARTMENT
15. 1-3/8" THK. X 6" NICHHA KUDSTONE HIGH FIBER CEMENT WAINSCOT
16. 1-1/2" HIGH NICHHA FIBER CEMENT CAP INSTALL PER MFR. SPECS.
17. NICHHA ESSENTIAL "OVERHANG" FLASHING
18. PARAPET WALL BEYOND
19. (KNOX) KEY-BOX AT 6'-0" AFF (IF REQUIRED BY FIRE DEPARTMENT)
20. FIRE DEPARTMENT CONNECTION (IF REQUIRED)
21. ALUMINUM ANNING WITH SUPPORT BIDS ABOVE THE SIDE ENTRY DOOR BY CIRCLE K VENDOR
22. EMERGENCY FUEL SHUT-OFF SWITCH
23. INSULATED METAL DOOR
24. NICHHA ESSENTIAL "STARTER" FLASHING 3" FROM THE HARD SURFACE
25. CO2 TANK WITH METAL LOADED CONTAINER
26. EXTERIOR FINISH TO EXTEND ABOVE SIDEWALK/PAVE
27. CONTRA/EXPANSION JOINT "J.I." LOCATION
28. SOFT - NICHHA FIBER CEMENT WALL PANEL SYSTEM

FINISH SCHEDULE

- | | |
|---|--|
| A | ***NICHHA TUFF BLOCK
- COLOR TO MATCH #SW 6055 TONIST |
| B | ***NICHHA TUFF BLOCK
- COLOR TO MATCH #SW 6115 TOTALLY TAN |
| C | - 1" INSULATED, DOUBLE PANELED GRAY TINTED GLASS |
| D | - SHERWIN WILLIAMS #SW 4081
- "SAFETY RED" |
| E | - NOT USED |
| F | ***NICHHA CHISELED SIL TAN |
| G | ***NICHHA LEDGESTONE BLUFF |
| H | - SHERWIN WILLIAMS #SW 6050 - TAN
- PRESTONE MANSARD BROWN SR (USE FOR PRE-FINISHED METAL COPING) |
| I | - NOT USED |
| J | ***NICHHA TUFF BLOCK
- COLOR TO MATCH #SW 4081
* USE SHERWIN WILLIAMS MANUFACTURER ONLY
** COLOR TO BE DETERMINED TO ENSURE AVAILABILITY
*** PURCHASED BY CIRCLE K/INSTALLED BY G.C.
G.C. TO COORDINATE WITH CK PM AND OWNER'S REP
G.C. TO COORDINATE WITH CK PM AND OWNER'S REP |



1 FRONT ELEVATION



GRAY TINTED SOLARBAN
SOLARGRAY GLASS



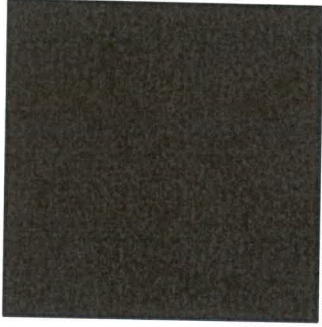
NICHIHA TUFF BLOCK TO MATCH
#SW 6095 "TOASTY"



NICHIHA TUFF BLOCK TO MATCH
#SW 6115 "TOTALLY TAN"



NICHIHA TUFF BLOCK TO MATCH
#SW 4081 "SAFETY RED"



DARK BRONZE
STOREFRONT SYSTEM



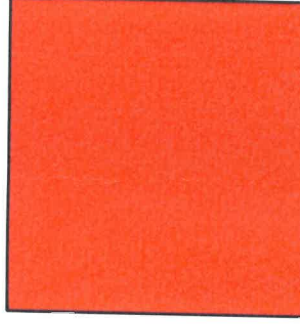
FIRESTONE MANSARD
BROWN SR/SW #6090 "JAVA"



NICHIHA FIBER CEMENT CAP
CHISELED SILL "TAN"



NICHIHA KURASTONE HIGH
FIBER CEMENT WAINSCOT
LEDGESTONE "BLUFF"



SHERWIN WILLIAMS #SW 4081
"SAFETY RED"

