

Vacation #22-04

Paseo Subdivision

City Council Meeting 3/20/2023



El Capitan
High School

Subject Site

G ST

BELLEVUE RD

BARCLAY WAY

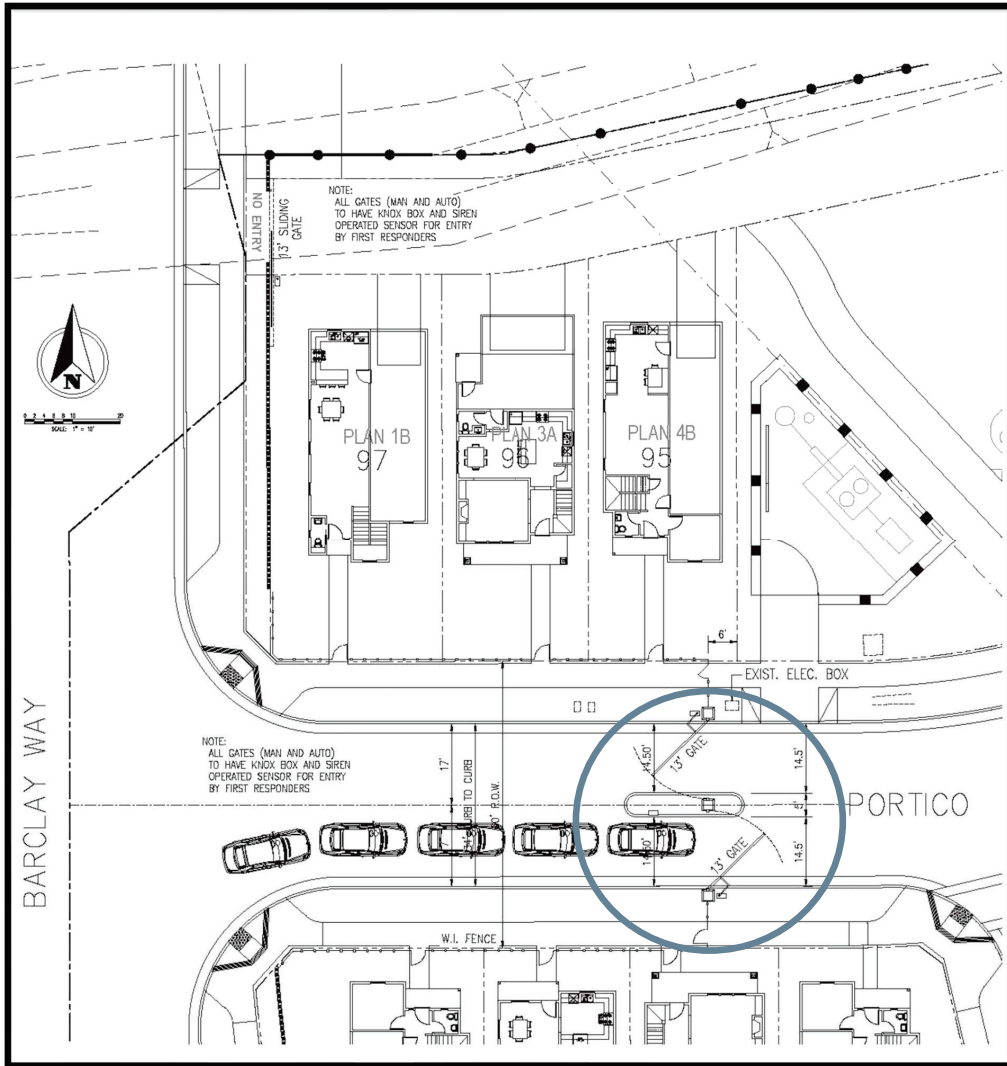
DEXTER CT

WEBBER CT

DURANT WAY

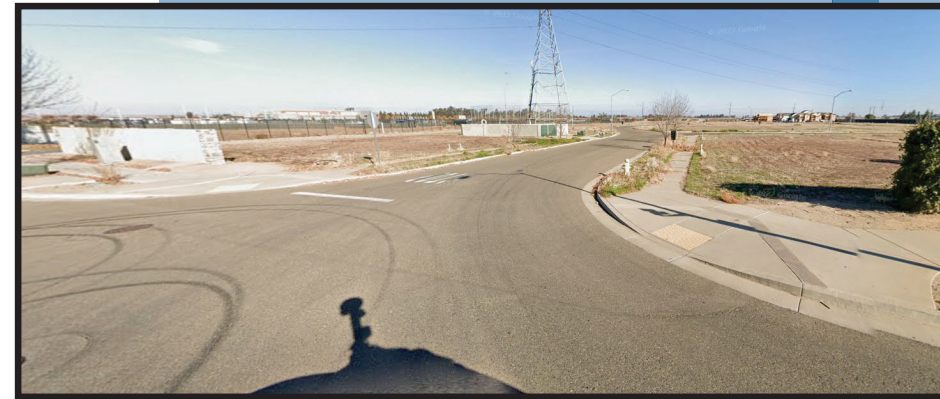
Background

- The Paseo Subdivision was approved, and the final map recorded in 2007.
- The subdivision contains 150 single-family lots ranging in size from 1,860 s.f. to 2,640 s.f.
- The western half of the subdivision was changed to commercial in 2011, but was reverted back to residential in 2021.
- The subdivision is currently enclosed on three sides.
- The small lots and close proximity of the homes gives the subdivision the feel a condominium community or apartment complex.
- The developer feels the subdivision would be enhanced and provide a better sense of security for the property owners if the entrance was gated.

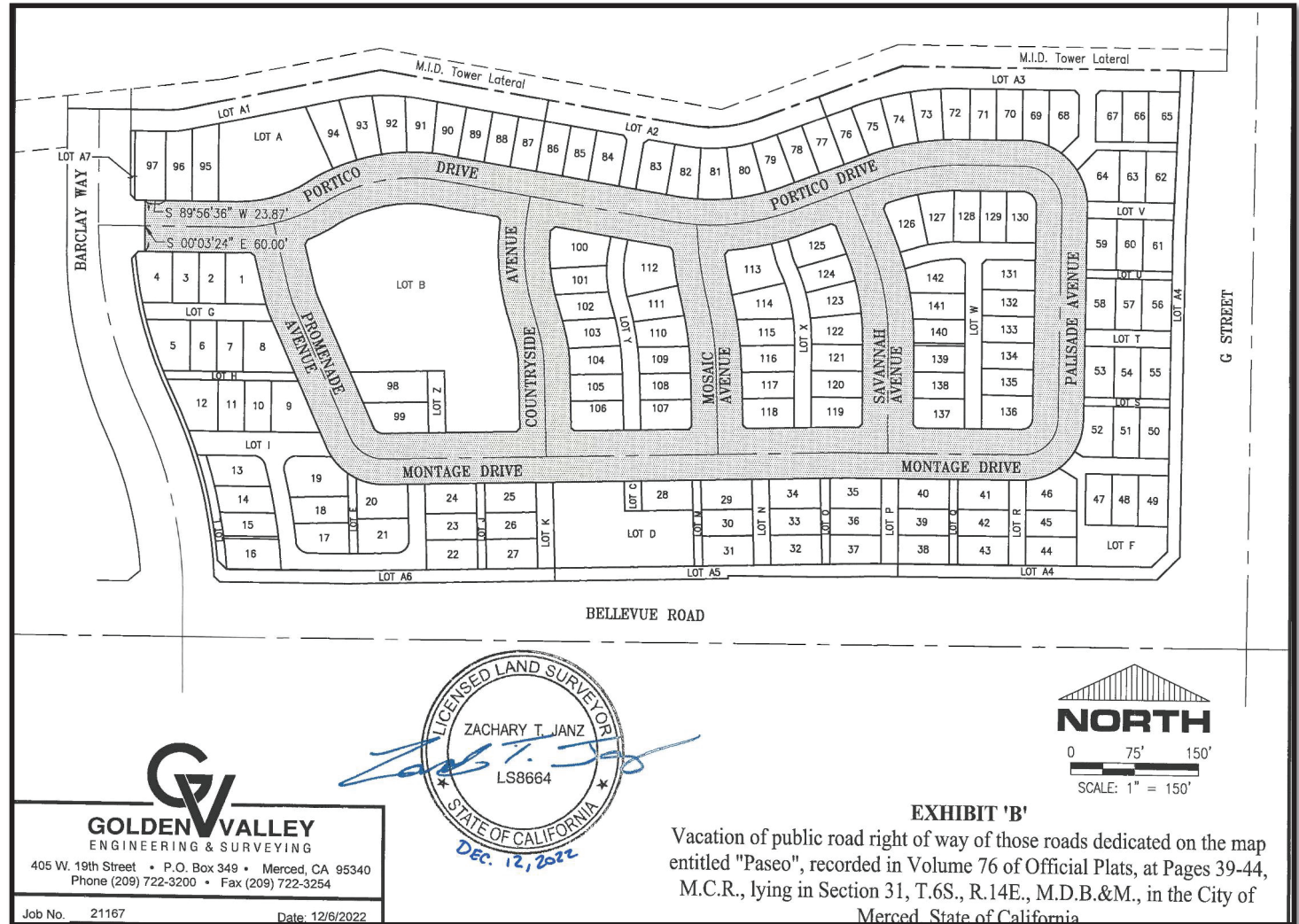


Paseo Subdivision

- Gated Entry



Entrance from Barclay Way



Previous Actions

- On February 8, 2023, the Planning Commission made a finding that the vacation is consistent with the General Plan;
- On February 21, 2023, the City Council adopted Resolution #2023-11 setting a public hearing regarding the vacation for March 20, 2023.

City Council Action

- Hold a public hearing regarding Vacation #22-04.
- Approve/Disapprove/Modify:
 - Vacation #22-04

Questions...