



McNAMARA PARK

Merced, California

SOFTBALL / SOCCER - LED PROPOSAL

Cody Lunsford: 512-736-4794 / cody@sportlighting.com

Purchasing Co-Op / Contract #:	CMAS Contract#:4-12-56-0046A
Partner:	GONLED
Project Name:	McNamara Park
Project City-State:	Merced, California
Quote Date:	3/13/2023
Type of Field(s):	<u>Softball/Soccer Combo Field</u>
Photometrics Per Design #:	30 FC Light Level / 23-6994-SB
Type of Field(s):	<u>Skate Park</u>
Photometrics Per Design #:	20 FC Light Level / 23-6994-SB
Type of Field(s):	<u>Soccer Fields</u>
Photometrics Per Design #:	30 FC Light Level / 23-6994-SC
Warranty:	10 Year Manufacturer Product Warranty

Quantity	Description
8	7 Fixture Crossarms (Retrofit)
93	CLIR 630w LED w/ Standard Visor
93	CLIR 20" Extended Visor
1	EcoLink Wireless Control System - Base Station & Node (Includes 10 Years of Communication Costs)
93	Prewiring for Poles and Crossarms (On/Off Controls Only - EcoLink Controls)
37	Amp Bracket "Bullhorn" (Smaller Field)
37	Slip-Fitter Bracket
37	Retrofit Installation Hardware Kit (bolts, washers, wire nuts, etc...)

Project Notes:

- Price includes all materials listed above (excluding adders & deducts).
- Price includes delivery to jobsite.
- Price firm for 45 days.
- Allow 6-8 weeks for delivery.
- Price does **NOT** include SALES or USE taxes.
- All work to be performed that requires a license, including but not limited to electrical & plumbing will be performed by individuals currently licensed in the proper jurisdiction.

Warranty Notes:

- Seller warrants that Equipment furnished or manufactured by Seller will be free from defects in material and workmanship for a period - of 10 years from date of shipment.
- Seller will replace any defective material for the entire 10 year period.
- Techline will make every effort to maintain any component of our sports lighting system for the entirety of the warranty period.

RETROFIT Installation Notes:

- Allow 2-3 weeks for Retrofit installation.
- Price quoted assumes the integrity of all existing structure (poles, crossarms, wiring) are of sound workmanship and quality.
- Pole locations must also be accessible and not obstructed by fencing, buildings, etc.
- Minimum mounting heights of 60' or higher are recommended to minimize glare and optimize player safety according to the Illumination - Engineering Society of North America. (Basketball & Tennis courts are not applicable)
- ☒ **INCLUDES:**
 - ✓ Demolition & Disposal of existing sports lighting fixtures.
 - ✓ Reusing main distribution panel, breakers, contactors and switching.
 - ✓ Reusing individual conduit and wiring for each pole sized accordingly. No more than 3% voltage drop shall be allowed.
 - ✓ All wiring to be copper type THHN.
 - ✓ Mounting all fixtures in place, fixture aiming, commissioning of controls, control training, and final clean up.
 - ✓ All electrical installation to meet National Electric Code requirements.
- ☒ **EXCLUDES:**
 - ✗ Disposal of existing sports lighting system.
 - ✗ All permits, fees and inspections associated with the project.

Total Including Retrofit Install = **\$292,853.00**



Pole Summary		
Scene: DEFAULT		
Poles	# Lums	MH
A1	3	40
A2	3	40
P1	6	60
P1-B	1	60
P2	6	60
P3	6	60
P4	6	60
P5	4	40
P6	2	25

Pole Wattage Summary	
Scene: DEFAULT	
Label	Total Watts
A1	1938
A2	1938
P1	4522
P2	3876
P3	3876
P4	3876
P5	2584
P6	1292
TOTAL	23902

Luminaire Schedule					
Scene: DEFAULT					
Symbol	Qty	Label	LLF	Lum. Watts	Arrangement
☐	25	CLIR_630_EV_M	0.950	646	SINGLE
☐	10	CLIR_630_EV_W	0.950	646	SINGLE
☐	2	CLIR_630_EV_EW	0.950	646	SINGLE

Calculation Summary											
Scene: DEFAULT											
Label	Area Size	Units	Avg	Max	Min	Max/Min	# Pts	PtSpcLr	PtSpcTb	CV	UG
SKATE PARK		Fc	24.71	63.5	7.2	8.82	56	10	10	0.53	3.29
SOCCER F3		Fc	39.28	59.2	22.0	2.69	40	30	30	0.27	1.59
SOFTBALL		Fc	33.64	53.8	19.7	2.73	78	20	20	0.24	2.20

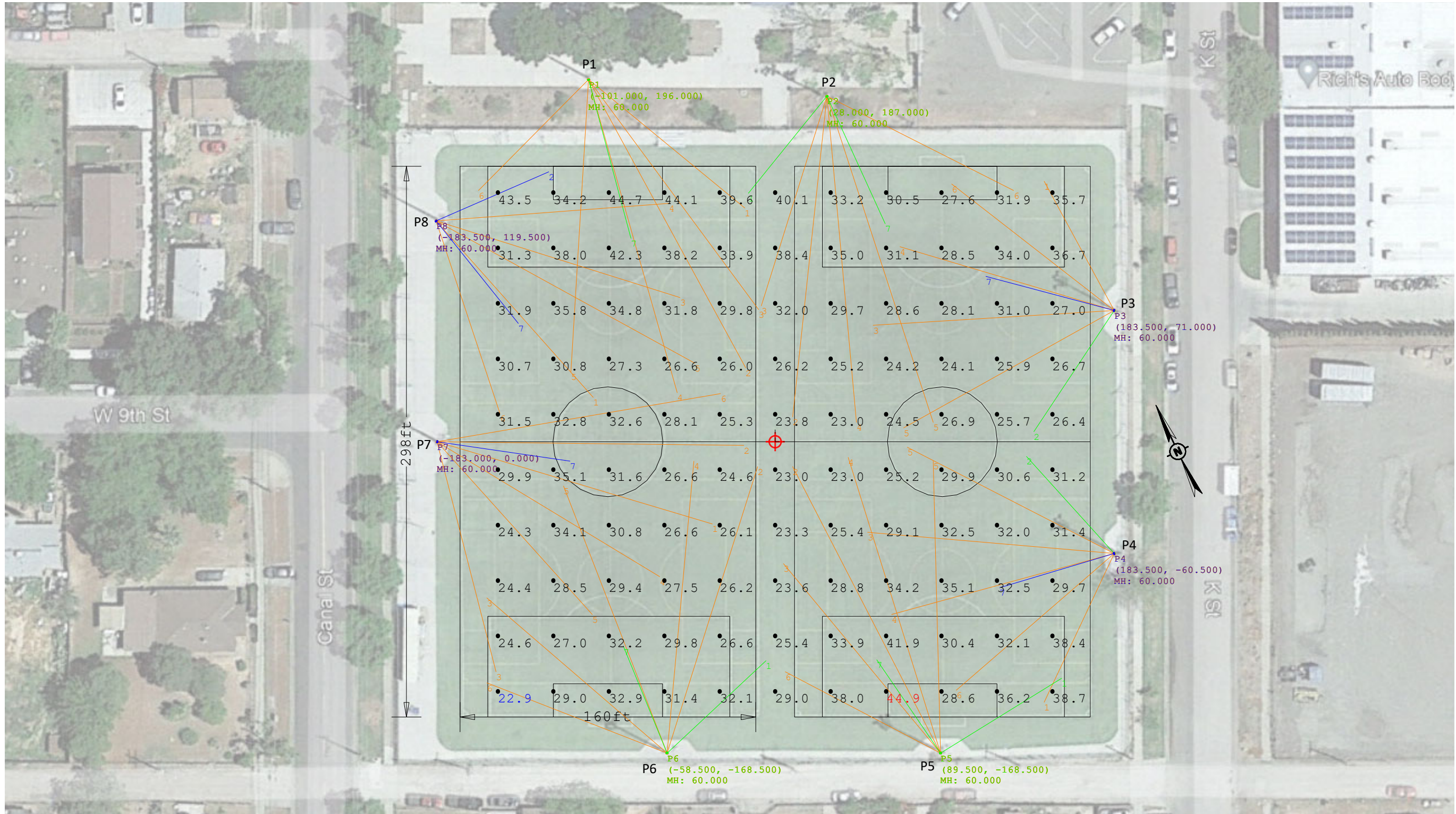
**DESIGN BASED OFF OF LATEST SATELLITE IMAGES AVAILABLE AT THE TIME OF DESIGN.
ALL MESAUREMENTS/POLE LOCATIONS NEED TO BE FIELD VERIFIED FOR ACCURACY
AND APPROVED BEFORE PRODUCTION CAN BEGIN.**



CITY OF MERCED-MCNAMARA PARK
MERCED, CA
SOCCER/SOFTBALL/SKATE PARK
23-6994-SB.AGI

1. THIS LIGHTING DESIGN IS BASED ON INFORMATION SUPPLIED BY OTHERS. SITE DETAILS PROVIDED HEREON ARE REPRODUCED ONLY AS A VISUALIZATION AND FIELD CONDITIONS MAY SIGNIFICANTLY AFFECT PREDICTED PERFORMANCE. PRIOR TO INSTALLATION, OBTAIN SITE INFORMATION (POLE LOCATION, ORIENTATION, MOUNTING HEIGHT, ETC.) SHOULD BE COORDINATED WITH THE CONTRACTOR AND/OR SPECIFIER RESPONSIBLE FOR THE PROJECT.
2. LUMINAIRE DATA IS TESTED TO INDUSTRY STANDARDS UNDER LABORATORY CONDITIONS. OPERATING VOLTAGE AND NORMAL MANUFACTURING TOLERANCES OF JAMES BEALLEY AND LUMINAIRE MAY AFFECT FIELD RESULTS.
3. CONFORMANCE TO FACILITY CODE AND OTHER LOCAL REQUIREMENTS IS THE RESPONSIBILITY OF THE OWNER AND/OR THE OWNER'S REPRESENTATIVE.

DRAWN BY: KBER
Date:3/7/2023
SCALE: NTS
Page 1 of 1
23-6994-SB.AGI



Pole Summary		
Scene: DEFAULT		
Poles	# Lums	MH
P1	7	60
P2	7	60
P3	7	60
P4	7	60
P5	7	60
P6	7	60
P7	7	60
P8	7	60

Pole Wattage Summary	
Scene: DEFAULT	
Label	Total Watts
P1	4522
P2	4522
P3	4522
P4	4522
P5	4522
P6	4522
P7	4522
P8	4522
TOTAL	36176

Luminaire Schedule					
Scene: DEFAULT					
Symbol	Qty	Label	LLF	Lum. Watts	Arrangement
	42	CLIR_630_EV_M	0.950	646	SINGLE
	9	CLIR_630_EV_W	0.950	646	SINGLE
	5	CLIR_630_EV_EW	0.950	646	SINGLE

Calculation Summary												
Scene: DEFAULT												
Label	Area Size	Units	Avg	Max	Min	Max/Min	# Pts	PtSpcLr	PtSpcTb	CV	UG	
SOCCER F1-F2	298'x160'	Fc	30.72	44.9	22.9	1.96	110	30	30	0.17	1.57	

**DESIGN BASED OFF OF LATEST SATELLITE IMAGES AVAILABLE AT THE TIME OF DESIGN.
ALL MESAUREMENTS/POLE LOCATIONS NEED TO BE FIELD VERIFIED FOR ACCURACY
AND APPROVED BEFORE PRODUCTION CAN BEGIN.**



CITY OF MERCED-MCNAMARA PARK
MERCED, CA
SOCCER
23-6994-SC.AGI

1. THIS LIGHTING DESIGN IS BASED ON INFORMATION SUPPLIED BY OTHERS. SITE DETAILS PROVIDED HEREON ARE REPRODUCED ONLY AS A VISUALIZATION AND FIELD CONDITIONS MAY SIGNIFICANTLY AFFECT PREDICTED PERFORMANCE. PRIOR TO INSTALLATION, OBTAIN SITE INFORMATION (POLE LOCATION, ORIENTATION, MOUNTING HEIGHT, ETC.) SHOULD BE COORDINATED WITH THE CONTRACTOR AND/OR SPECIFIER RESPONSIBLE FOR THE PROJECT.
2. LUMINAIRE DATA IS TESTED TO INDUSTRY STANDARDS UNDER LABORATORY CONDITIONS. OPERATING VOLTAGE AND NORMAL MANUFACTURING TOLERANCES OF LAMP, BALLAST, AND LUMINAIRE MAY AFFECT FIELD RESULTS.
3. CONFORMANCE TO FACILITY CODE AND OTHER LOCAL REQUIREMENTS IS THE RESPONSIBILITY OF THE OWNER AND/OR THE OWNER'S REPRESENTATIVE.

DRAWN BY: KBER
Date:3/7/2023
SCALE: NTS
Page 1 of 1
23-6994-SC.AGI

CLIR 630w

TECHNICAL DATA
FIXTURE



*Shown with standard visor, available extended visor for maximum glare/spill control



CLIR 630w

TECHNICAL DATA

SYSTEM SPECIFICATIONS

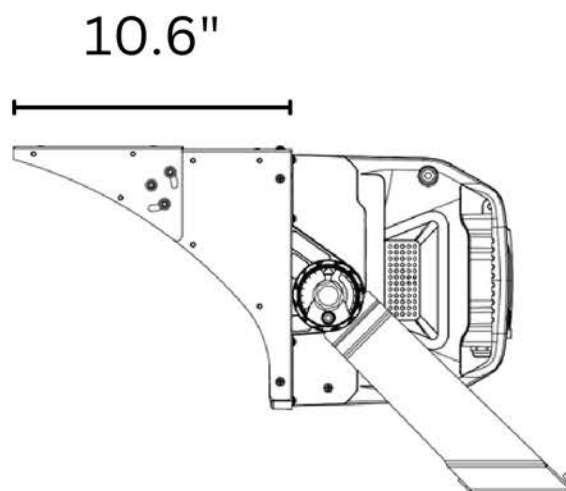
SYSTEM WATTS	630w
LUMEN OUTPUT	85,000
kW LOAD	646 watts
EPA	1.5
WEIGHT	41 lbs
CLIR MODULE	OM, CM, ECM
BEAM ANGLE	N, M, W, EW
POWER FACTOR	0.95
CCT	5700K
CRI	>70Ra
INPUT VOLTAGE	208-480v
INPUT PROTECTION	10KV Current Surge
DRIVER	Integral, Remote
IP RATING	IP66, IP68
OPERATING TEMP RANGE	-40° C to +55°C
HOUSING MATERIAL	Alumimum, Powder Coated

CLIR 630w

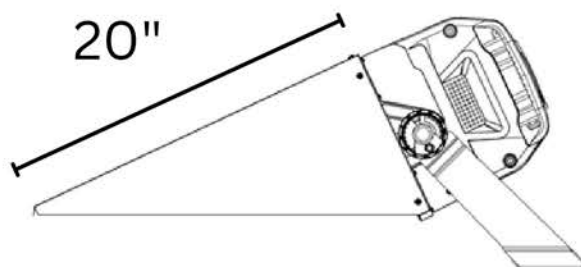
TECHNICAL DATA

Visor Options

Standard Visor



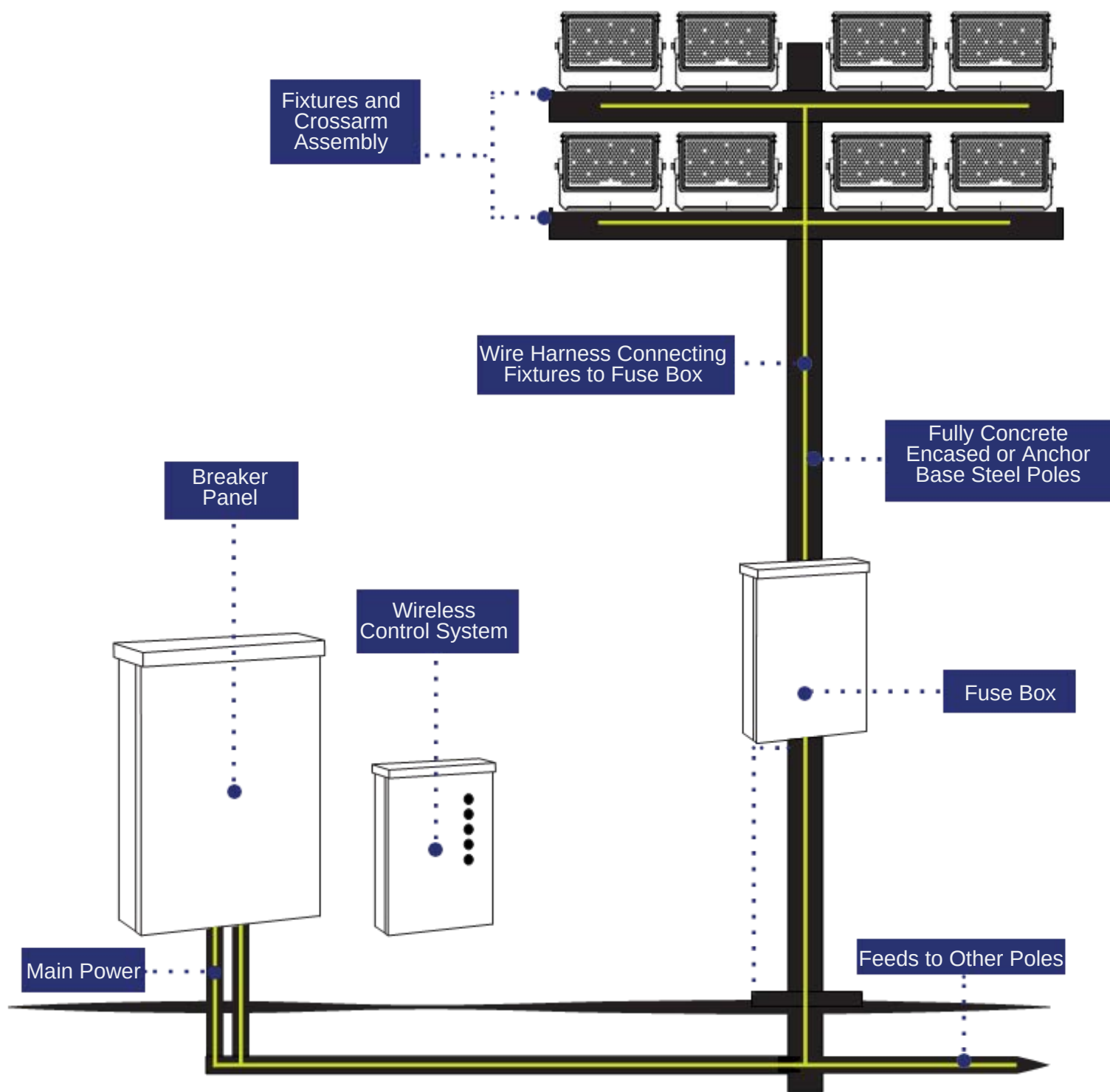
Extended Visor



Fixture Aimed at 25° Below
Horizontal

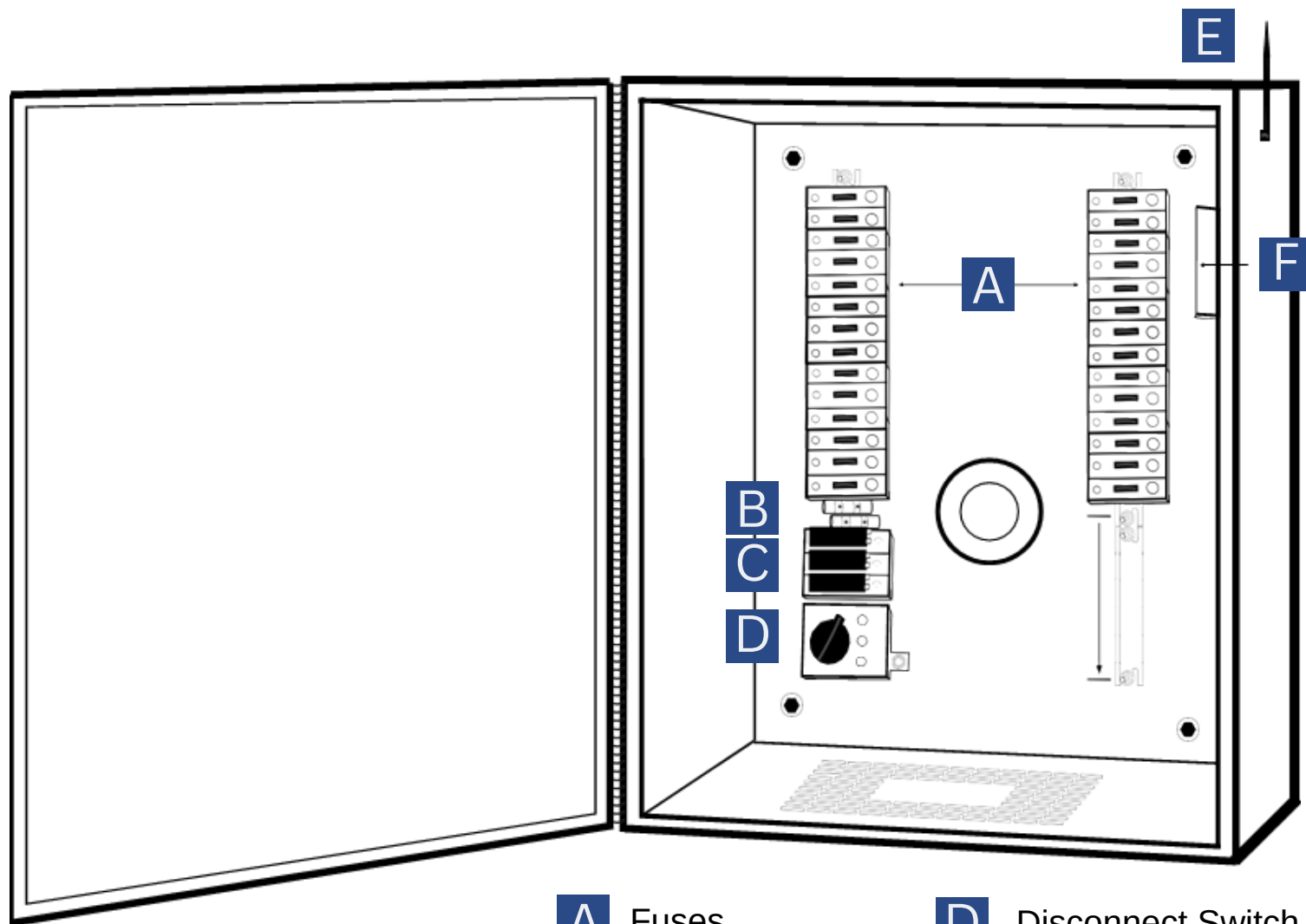
CLIR 630w

System Drawing



CLIR 630w

Fuse Box



Drawings do not designate fuse size, wiring, NEMA Box Type, distribution block information, disconnect switch size, ampacity, and surge arrester specification

Drawing depicts a typical Fuse Box (Control Enclosure)

A customized Fuse Box will be Designed for any Specific Required Application

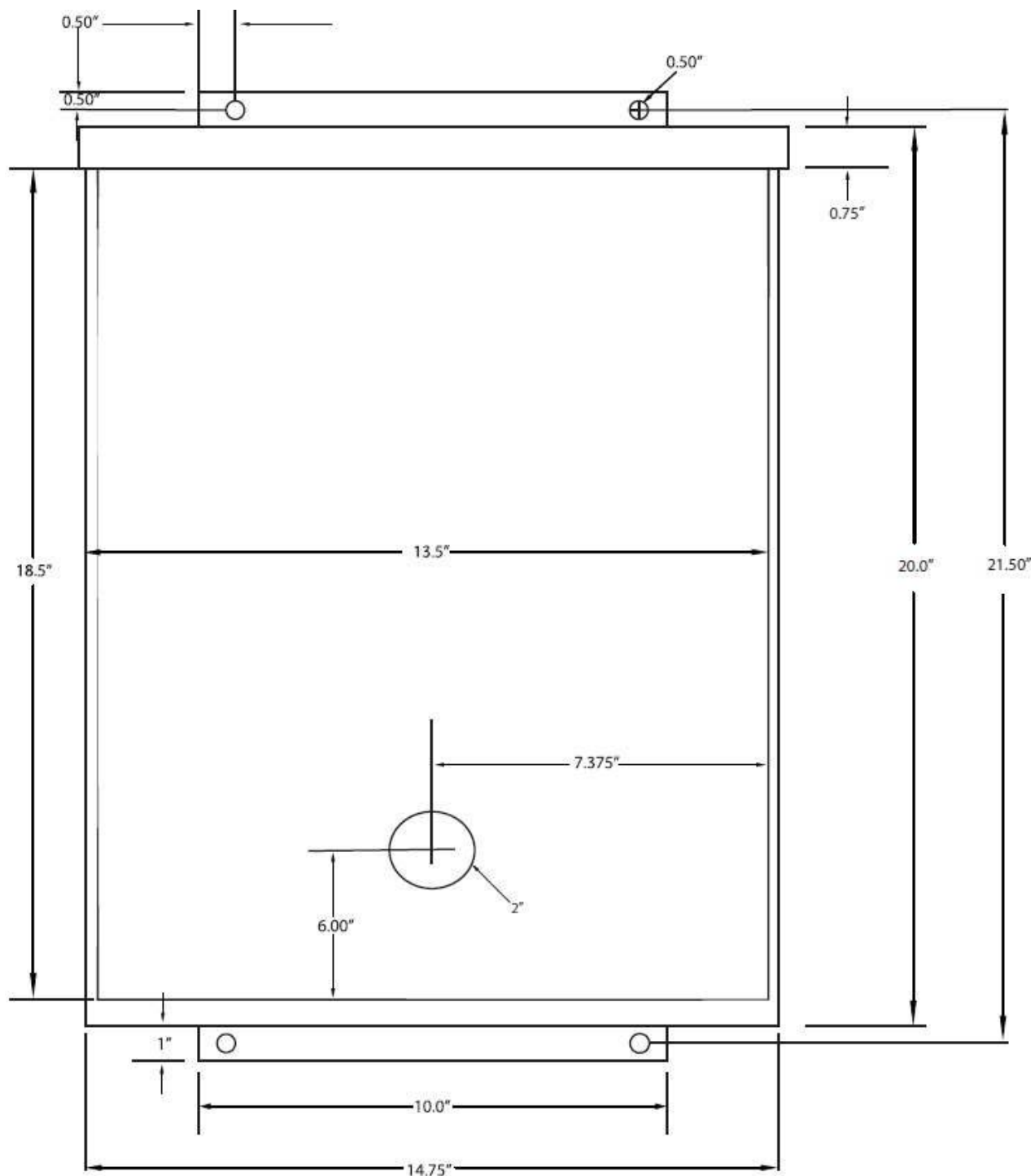
- | | | | |
|----------|--------------------|----------|----------------------------------|
| A | Fuses | D | Disconnect Switch |
| B | Ground Block | E | Wireless Antenna |
| C | Distribution Block | F | Wireless Relay
Dimming-On/Off |

G * Alternate Control Option *

Simple On/Off No Dimming
Allows Digital Contactor (AirMesh Hub by Synapse)
the Ability to Remotely Turn Lights On/Off. This Option
DOES NOT allow Dimming Capability

CLIR 630w

Small Box



****Drawings do not designate fuse size, wiring, NEMA box type, distribution block information, disconnect switch size, ampacity, and surge arrester specification**

Technical Data

Product Overview

The Wireless Controller is a 2-way Control and Remote Monitoring System designed specifically to control Sport Lighting Systems.

The system consists of a Base Station and Wireless Nodes and is accessed via a secure web enabled device and our cloud based servers.

From any internet enabled device, the System User can log into the web portal with their unique credentials and can control, monitor, schedule, and download reports across the entire system. The Base Station also includes whole system local override switches.

Features

- Allows for remote access via Internet Browsers and Mobile App
- Weather protected - perfect for both indoor and outdoor applications
- Onsite manual switch to allow for control of all lighting within the facility
- External LED Usage Indicators



Wireless Controller



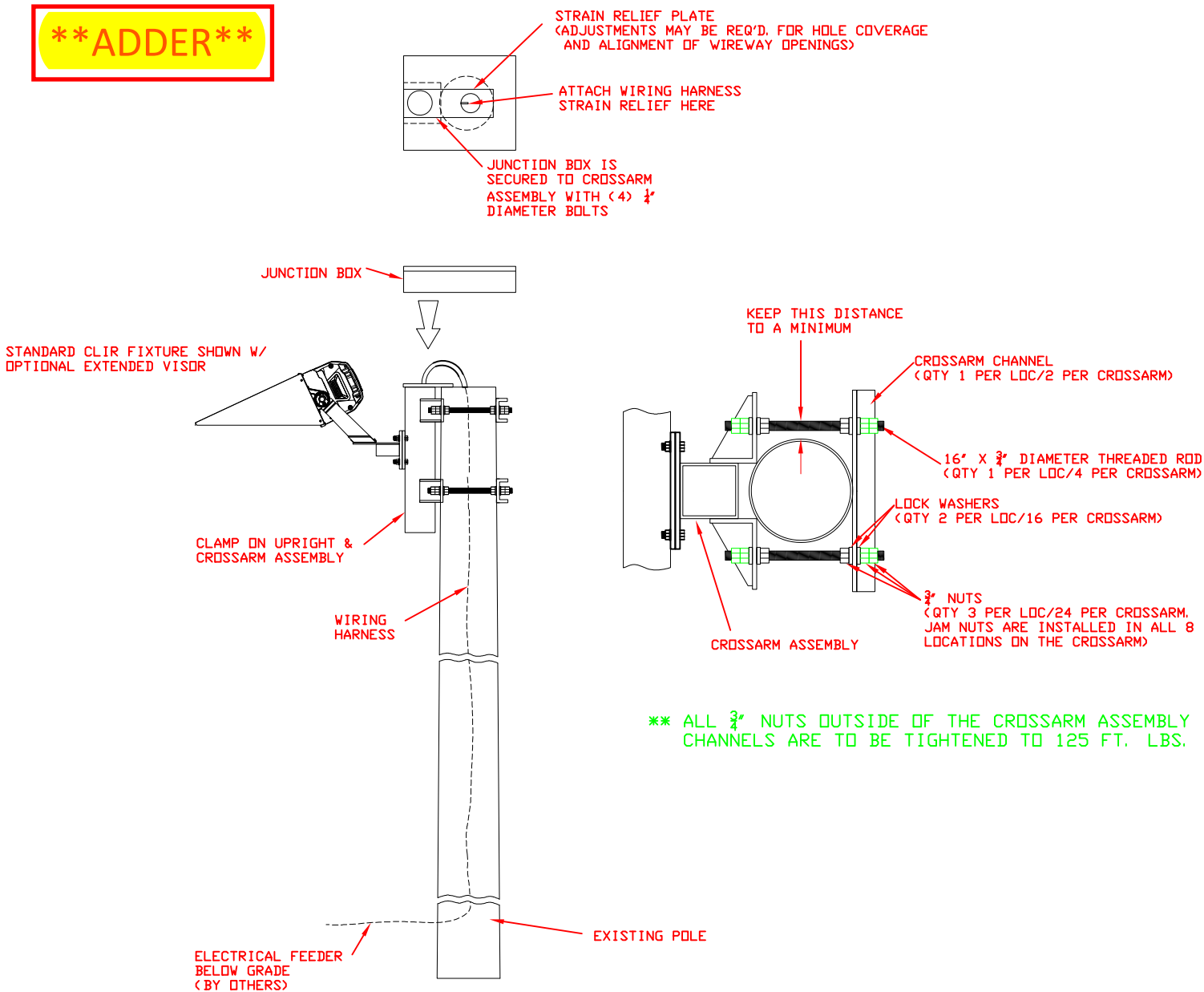
Product #	Base Station/Nodes
Description	Onsite controller with included remote access, and 4 position override switch
Dimensions	13.35" x 11.5" x 5.25" (10 lbs.)
Input Power	120v typical 50/60 Hz
Operating Environment	-20°C to +60°C NEMA 4 Rated Enclosure
Radio	900MHz ISM Band, IEEE 802.15.4 Spread Spectrum
Certifications	FCC Part 15, cETLus CA Title 24 and IDA

Technical Data



Wireless Controls

**** ADDER ****



1. THIS LIGHTING DESIGN IS BASED ON INFORMATION SUPPLIED BY OTHERS. SITE DETAILS PROVIDED HEREON ARE REPRODUCED ONLY AS A VISUALIZATION AID. FIELD DEVIATIONS MAY SIGNIFICANTLY AFFECT PREDICTED PERFORMANCE. PRIOR TO INSTALLATION, CRITICAL SITE INFORMATION (POLE LOCATIONS, ORIENTATION, MOUNTING HEIGHT, ETC.) SHOULD BE COORDINATED WITH THE CONTRACTOR AND/OR SPECIFIER RESPONSIBLE FOR THE PROJECT.
2. LUMINAIRE DATA IS TESTED TO INDUSTRY STANDARDS UNDER LABORATORY CONDITIONS. OPERATING VOLTAGE AND NORMAL MANUFACTURING TOLERANCES OF LAMP, BALLAST, AND LUMINAIRE MAY AFFECT FIELD RESULTS.
3. CONFORMANCE TO FACILITY CODE AND OTHER LOCAL REQUIREMENTS IS THE RESPONSIBILITY OF THE OWNER AND/OR THE OWNER'S REPRESENTATIVE.

REVISIONS	
△	DESCRIPTION
△	DESCRIPTION
△	DESCRIPTION
△	DESCRIPTION

Universal Retrofit X-arm Assembly (Clamp on)

DATE:	4-13-2021	DRAWN BY:	WRW
PROJECT:	NTS	APPROVED BY:	XXX
DRAWING NUMBER:	TSL-RET-CLAMP		





10 Year Manufacturer Warranty

Service under this Contract is provided by Techline Sports Lighting, LLC (TSL). Services completed under this Contract shall consist of furnishing parts necessary to restore the operation of the Warranted Product(s) to original design conditions provided such service is necessitated by failure of the Warranted Product(s) during normal usage. This Contract covers Product(s) consisting of Techline Sports Lighting LED System.

"We", "us" and "our" mean TSL. "You" and "your" mean the Purchaser of the Warranted Product(s). No one has the authority to change this Contract without the prior written approval of TSL shall not assume responsibility for their agents or assignees other than as described below. If there is a conflict between the terms of this Contract and information communicated either orally or in writing by one or more of our employees or agents, this Contract shall control.

1. Special Warranty: Manufacturer's standard form in which manufacturer agrees to replace components of luminaires, lamps, and luminaire alignment products and to correct misalignment that occurs subsequent to successful acceptance tests. Manufacturer may exclude lightning damage, hail damage, Electrical Surge, vandalism, abuse, and unauthorized repairs and alterations from special warranty coverage.
2. Warranty Period: Ten (10) year(s) from date of Substantial Completion.
3. Hours of Usage: Designs shall be based on the following hours of usage: Field Type, Annual Usage Hours, 10-Year Usage Hours
 - a. Manufacturer shall provide a means of tracking actual hours of usage for the field lighting system that is readily accessible to the owner.
 - b. Cumulative hours shall be tracked to show the total hours used by the facility.
4. Service Availability: Maintenance service specialists shall be available 8:00am to 5:00pm Central Standard Time, and services shall be performed during these same hours in your local time zone, Monday through Friday (with the exception of national holidays). Hours of operation are subject to change without notice. TSL will exercise all reasonable efforts to perform service under this Contract but will not be responsible for delays or failure in performing such services caused by adverse weather conditions, acts of any government, failure of transportation, accidents, riots, war, labor actions or strikes or other causes beyond its control.
5. Repair Determination: TSL will utilize the monitoring system and any information provided by the customer to determine when the usage of the field is materially impacted. From this information, TSL will determine repair and/or replacement of Warranted Product(s) and parts. Repair and/or replacement will be with product(s) of similar kind and quality.

Your Requirements Under this Contract: You must meet all electrical and installation requirements as specified by the Manufacturer. In addition, you assure: full cooperation with TSL technicians and authorized servicers during diagnosis and repair of the Warranted Product(s); reasonable accessibility of the Warranted Product(s); a nonthreatening and safe environment for service. You agree to check and replace fuses as needed. TSL provides spare fuses in each A-pole enclosure. TSL will replace spare fuses used. You agree to keep your control system online. This means keeping the required control voltage to the control system at all times. Avoiding this practice must be discussed with TSL's Warranty Department.



10 Year Manufacturer Warranty

6. Service Limitations Not Covered by this Contract: Maintenance, repair or replacement necessitated by loss or damage resulting from any external causes such as, but not limited to, theft, environmental conditions, negligence, misuse, abuse, improper electrical/power supply, unauthorized repairs by third parties, attachments, damage to cabinetry, equipment modifications, vandalism, animal or insect infestation, physical damage to Warranted Product(s) parts or components, failure of existing structures, supporting electrical systems or any non-TSL equipment, or acts of nature (including, but not limited to: earthquake, flood, tornadoes, typhoons, hurricanes or lightning).

7. Contract Limitations:

a. Exclusions from coverage: in no event will TSL be liable for any special, indirect, incidental or resulting damages which include, but are not limited to, any delay in rendering service or loss of use during the repair period of the Warranted Product(s) or while otherwise awaiting parts.

b. Limitation of liability: to the extent permitted by applicable law, the liability of TSL, if any, for any allegedly defective Warranted Product(s) or components shall be limited to replacement of the Warranted Product(s) or components at TSL's option. This contract is your sole express warranty with respect to the Warranted Product(s). All implied warranties with respect to the Warranted Product(s) including, but not limited to, implied warranties of merchantability and fitness for a particular purpose, are hereby expressly excluded.

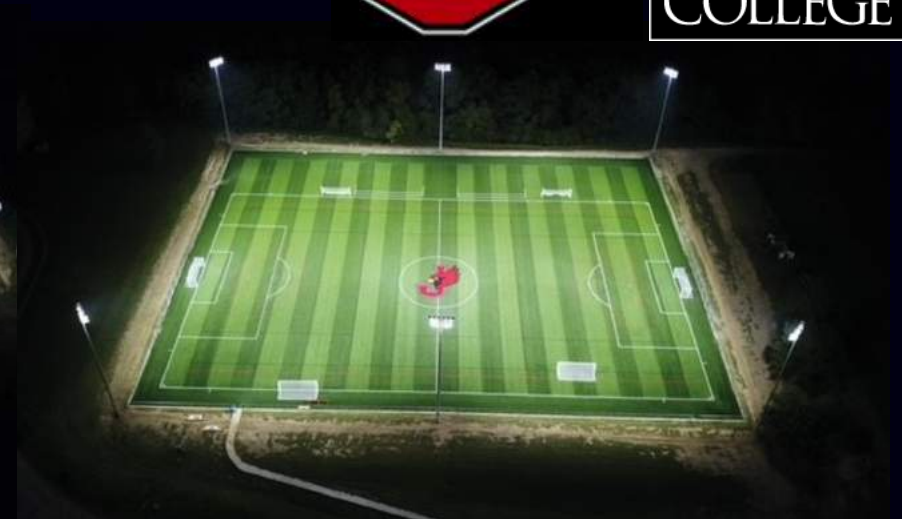
c. For the purposes of and by your acceptance of this Contract you acknowledge and agree that if a surety bond ("Bond") is provided the warranty and/or maintenance guarantee provided for in this Contract and any corresponding liability on behalf of the issuing surety under the Bond is limited to the first twelve (12) months of said warranty and/or maintenance guarantee coverage period. Any warranty and/or guarantee coverage period in excess of said initial 12-month period does not fall within the scope of the Bond and shall be the sole responsibility of TSL.

d. Obsolescence or Environmental Restrictions: If during any maintenance or other work performed under this Warranty, any of the parts of the Warranted Product(s) are found to be either obsolete, no longer available, or prohibited by any state or federal agency, TSL shall replace said parts with comparable parts and materials with equal operating characteristics solely at TSL discretion. The cost of replacement of any obsolete cellular related technology shall be borne by you. Prior to completing any such work, TSL shall notify you of the cost (if any) you will incur in the replacement of such parts under this section.

8. Transfer and Assignment: Except to owners, you shall not have the right to assign or otherwise transfer your rights and obligations under this Contract except with the prior written consent of TSL; however, a successor in interest by merger, operation of law, assignment or purchase or otherwise of your entire business shall acquire all of your interests under this Contract.

9. Governing Law: Unless otherwise governed by applicable state law, the Contract shall be interpreted and enforced according to the laws of the State of Texas.







GARMIN®
OLATHE SOCCER COMPLEX













RED RAIDER FOOTBALL
USD 320







FRANKLIN & MARSHALL
COLLEGE







PITTSBURG
SCHOOL DISTRICT





COLLEGE OF THE CANYONS



ALVIN INDEPENDENT SCHOOL DISTRICT



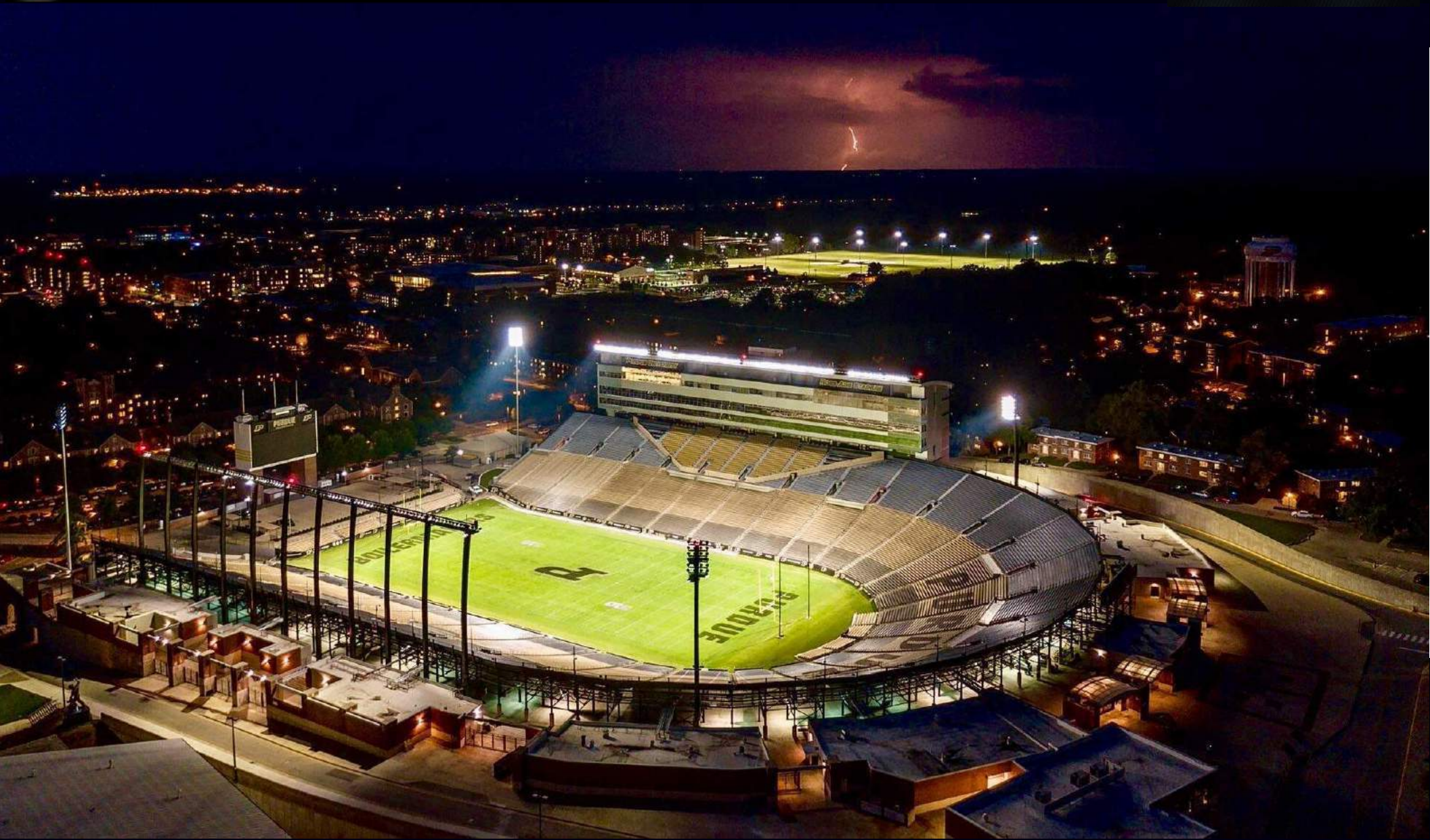


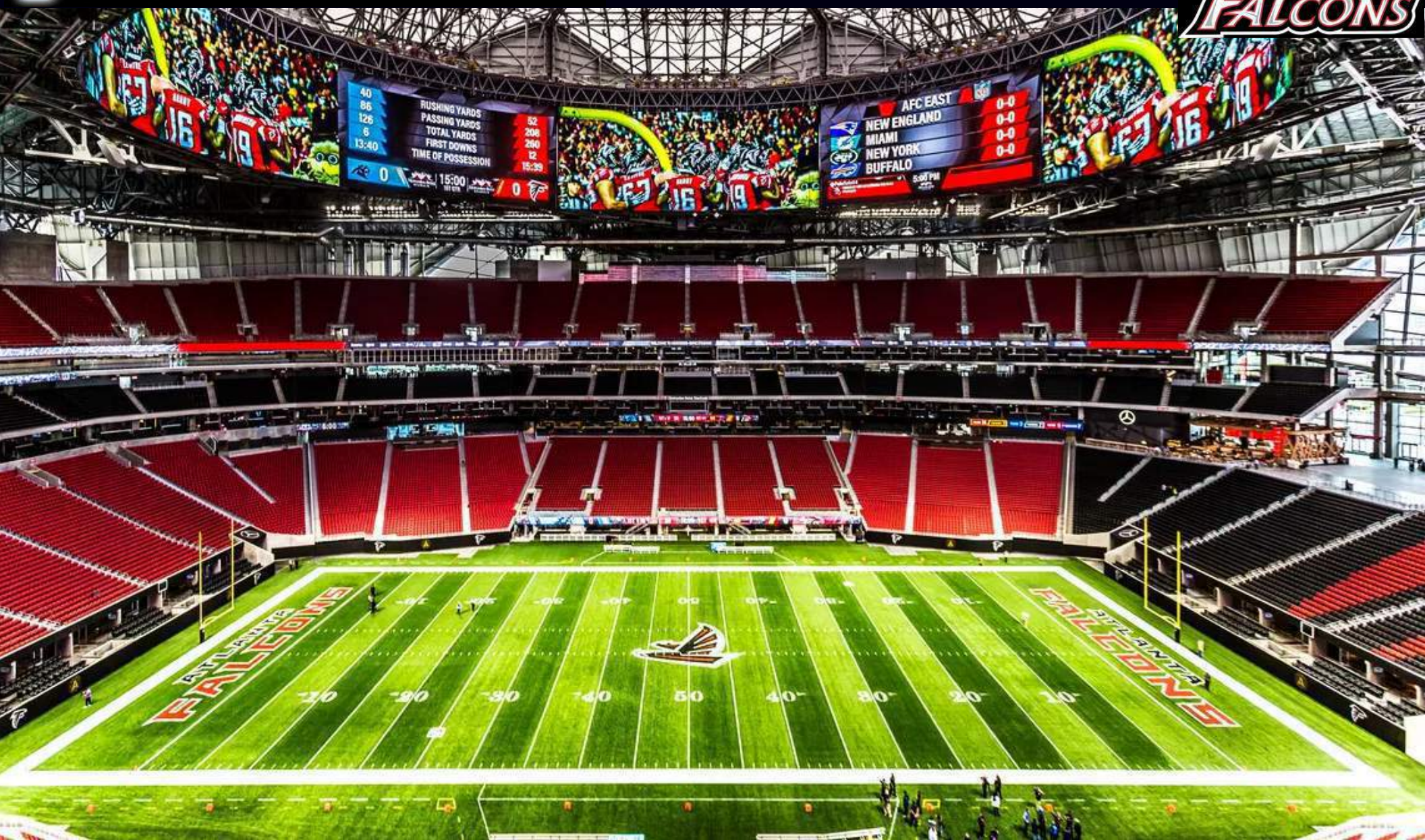
CENTRAL
HIGH SCHOOL













MIAMI
Dolphins



CLIR 630w EV LED

IDA Dark Sky Approved

Complete Spill & Glare Control