

EXHIBIT "A"

LAND DESCRIPTION

The land referred to herein below is situated in an unincorporated area in the City of Merced, County of Merced, State of California and is described as follows:

The Public Utility Easement reserved in the document titled "Resolution No. 2005-33" recorded March 28, 2005, as Document Number 2005-022030 Records, Merced County, as shown on Amending Map of Tract No. 5346 Highland Park 2007-056864, Book 77 of Official Plat, at Page 40, Merced County Records, lying in Section 24, Township 7 South, Range 13 East, Mount Diablo Base & Meridian.

A PLAT OF THE ABOVE DESCRIBED AREA IS ATTACHED HERETO AS EXHIBIT "B" AND BY THIS REFERENCE MADE A PART HEREOF.

END DESCRIPTION

This real property description has been prepared by me, or under my direction, in conformance with the requirements of the Professional Land Surveyors' Act.

Stephen Pyle

Stephen J. Pyle

Professional Land Surveyor

California No. 8385



AUGUST 24, 2023

Date

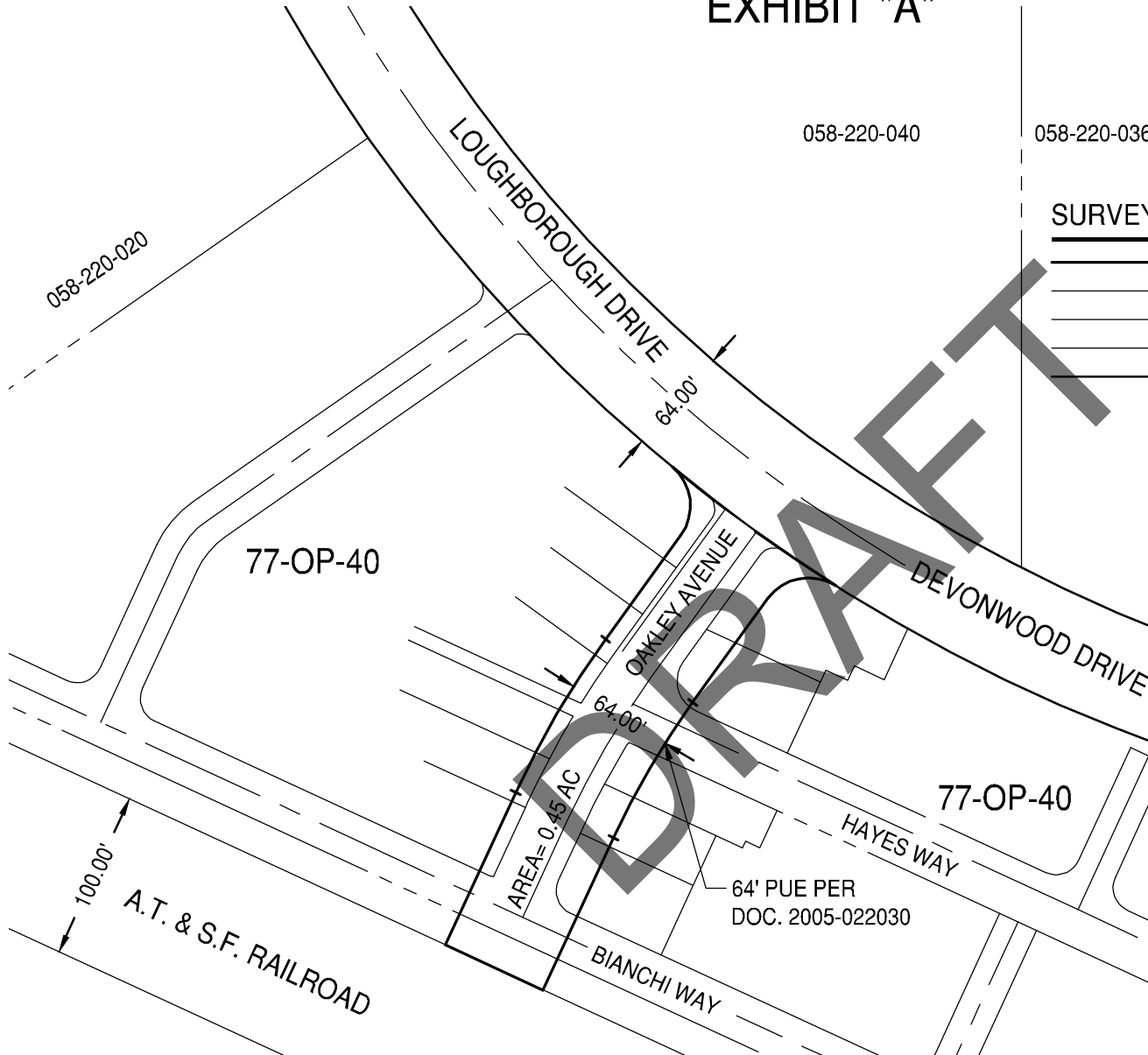
EXHIBIT "A"

ABBREVIATIONS

AC	ACRES
OP	OFFICIAL PLAT
PUE	PUBLIC UTILITY EASEMENT

SURVEY LEGEND

	BOUNDARY
	CENTERLINE
	EXISTING LINE
	RAILROAD BOUNDARY
	RIGHT OF WAY LINE



0 50 100
SCALE: 1" = 100'



08/24/2023



1165 Scenic Drive, Suite A
Modesto, CA 95350
odellengineering.com

DESCRIPTION: PUBLIC UTILITY EASEMENT

SCALE: 1" = 100' DATE: 2023-08-24

JOB NO.: 42430

FILE: 42430-EXH-64' PUE.DWG

1
of
1