



**Two Bedroom/1 Bath Unit**  
Square Footage 762 Sq. Ft.

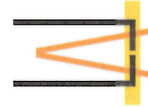
**One Bedroom/1 Bath Unit**  
Square Footage 542 Sq. Ft.



**Two Bedroom/2 Bath Unit**  
Square Footage 916 Sq. Ft.

**CONCEPT  
FLOOR PLANS**

**Sheet A4**  
Scale 1/4"=1'-0"  
March 15, 2015

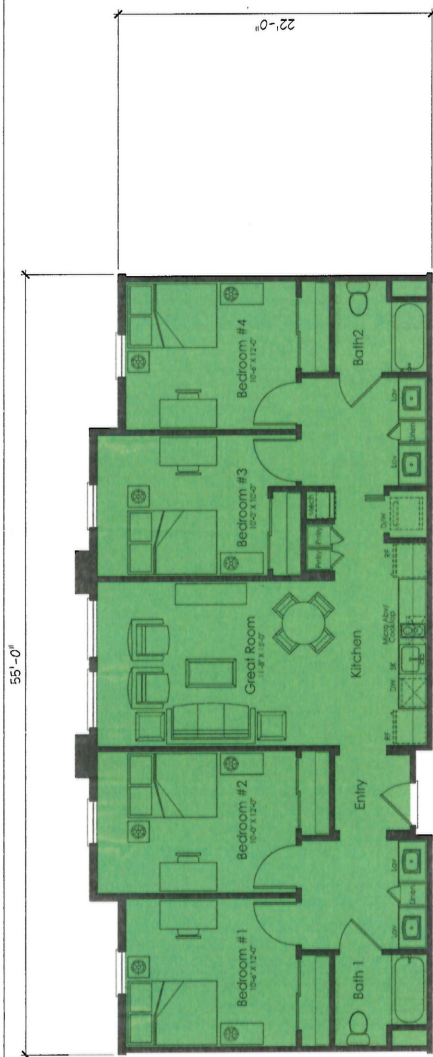


**LEE JAGOE ARCHITECTURE**  
INCORPORATED

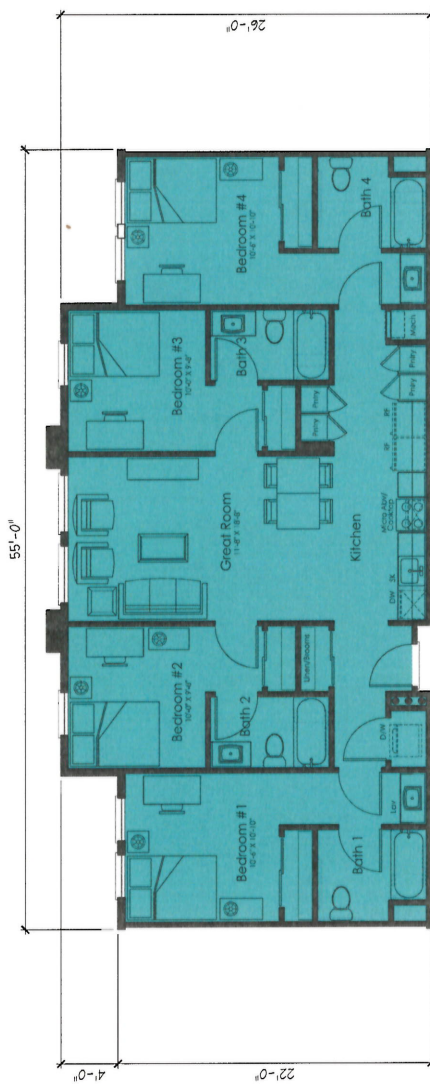
2291 W. MARCH LANE, SUITE 8200  
STOCKTON, CALIFORNIA 95207  
(209) 953-1818  
DIJAGOE@ARCH8200.COM

P.O. BOX 1571  
PEBBLE BEACH, CALIFORNIA 92053  
(831) 892-2014 FAX (831) 241-6285  
LEE@ARCH8200.COM

**Multifamily Housing Concept**  
Merced, California  
**BP Investors, LLC**



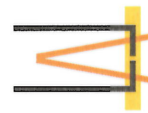
**Four Bedroom/2 Bath Unit**  
 Square Footage 1270 Sq. Ft.



**Four Bedroom/4 Bath Unit**  
 Square Footage 1339 Sq. Ft.

# CONCEPT FLOOR PLANS

Sheet A5  
 Scale 1/4"=1'-0"  
 March 15, 2015



LEE JAGOE ARCHITECTURE  
 INCORPORATED

P.O. BOX 1571  
 FERRISBURGH, CALIFORNIA 95955  
 (916) 857-0100  
 MLEE@LEEJAGOEARCH.COM

## Multifamily Housing Concept Merced, California

BP Investors, LLC

2291 W. MARCH LANE, SUITE 8200  
 STOCKTON, CALIFORNIA 95204  
 (209) 944-8887  
 DIAG@LEEJAGOEARCH.COM