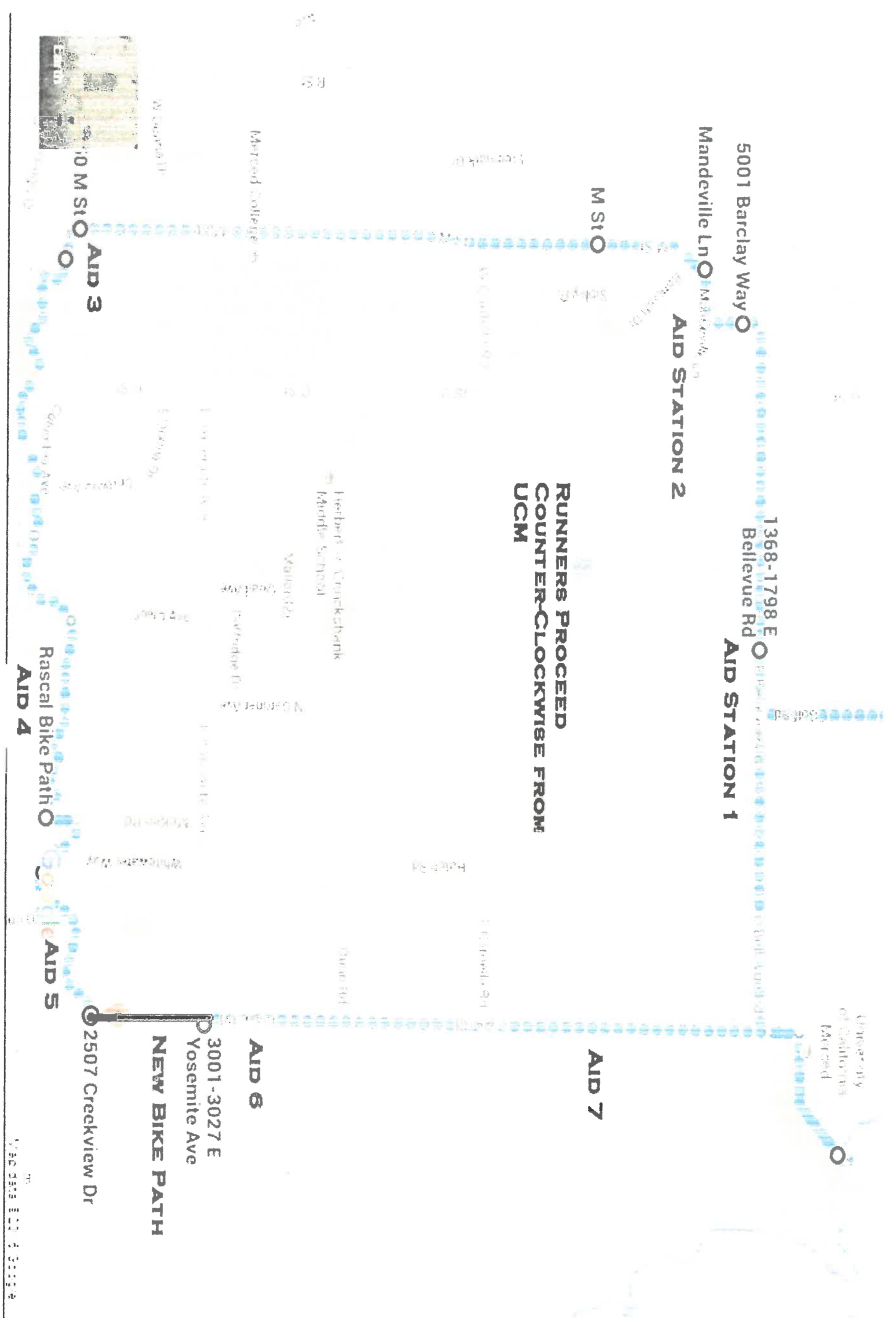


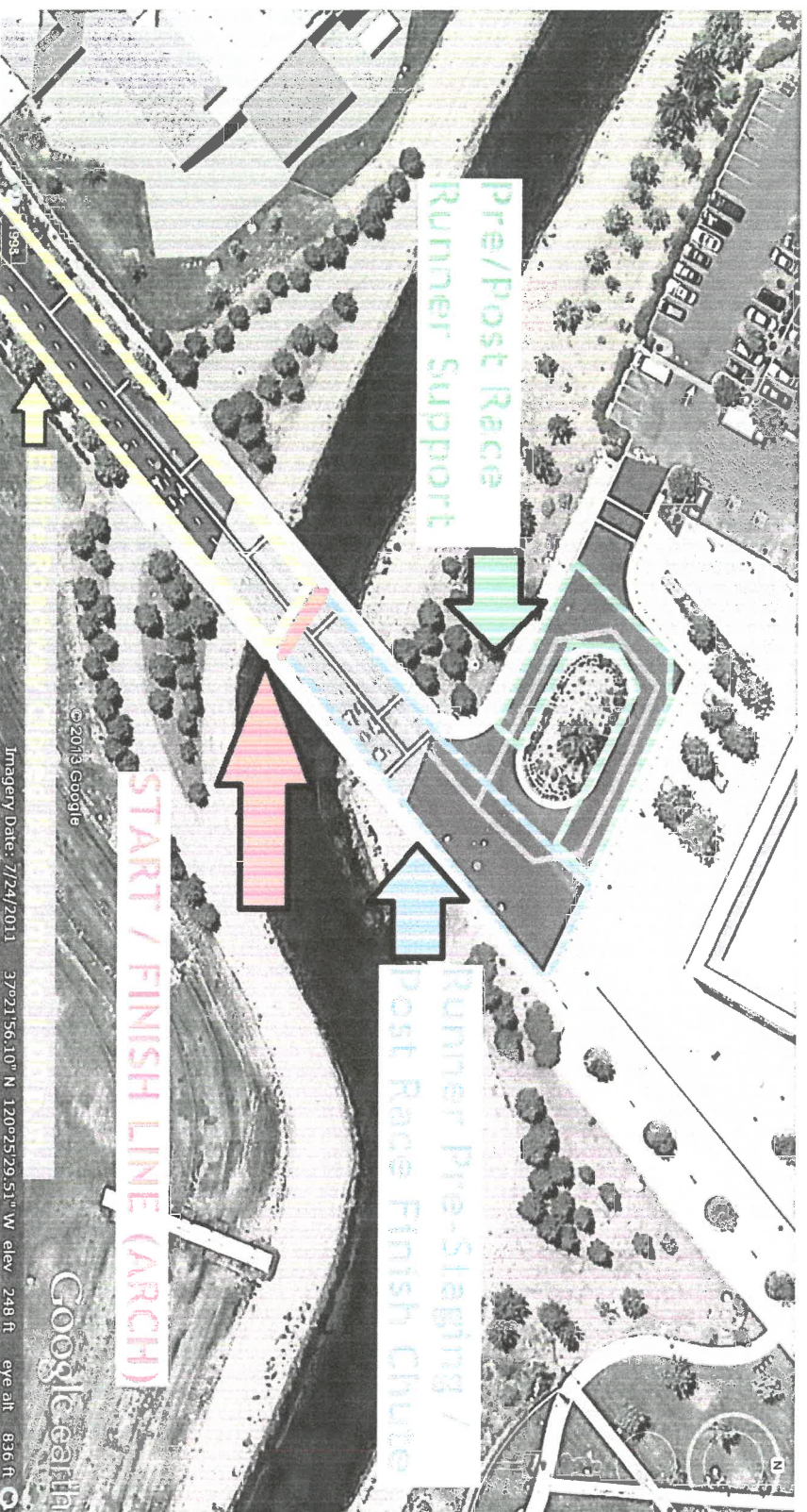
Course Proposal

The proposal includes a visual map with placement of signage, volunteers, traffic control, and aid stations

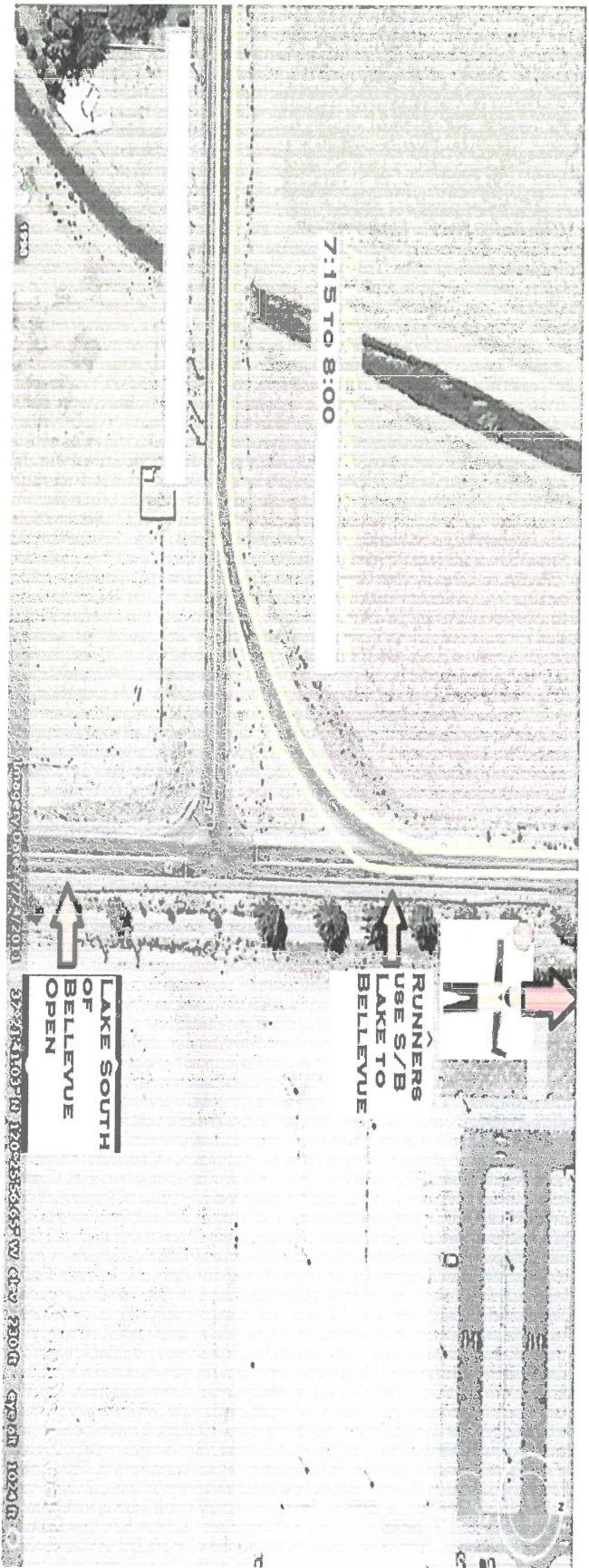
Route Map: The route proposed is almost the same as last year, but we are hoping to utilize the new bike path from Creekside Rd to Yosemite Ave., and then move runners across Yosemite onto the Vern Davis Bike Path. This means participants will stay on Rascal Bike Path to McKee, proceed North on McKee, East on Silverstone, and South on Creekview to the new bike path section.



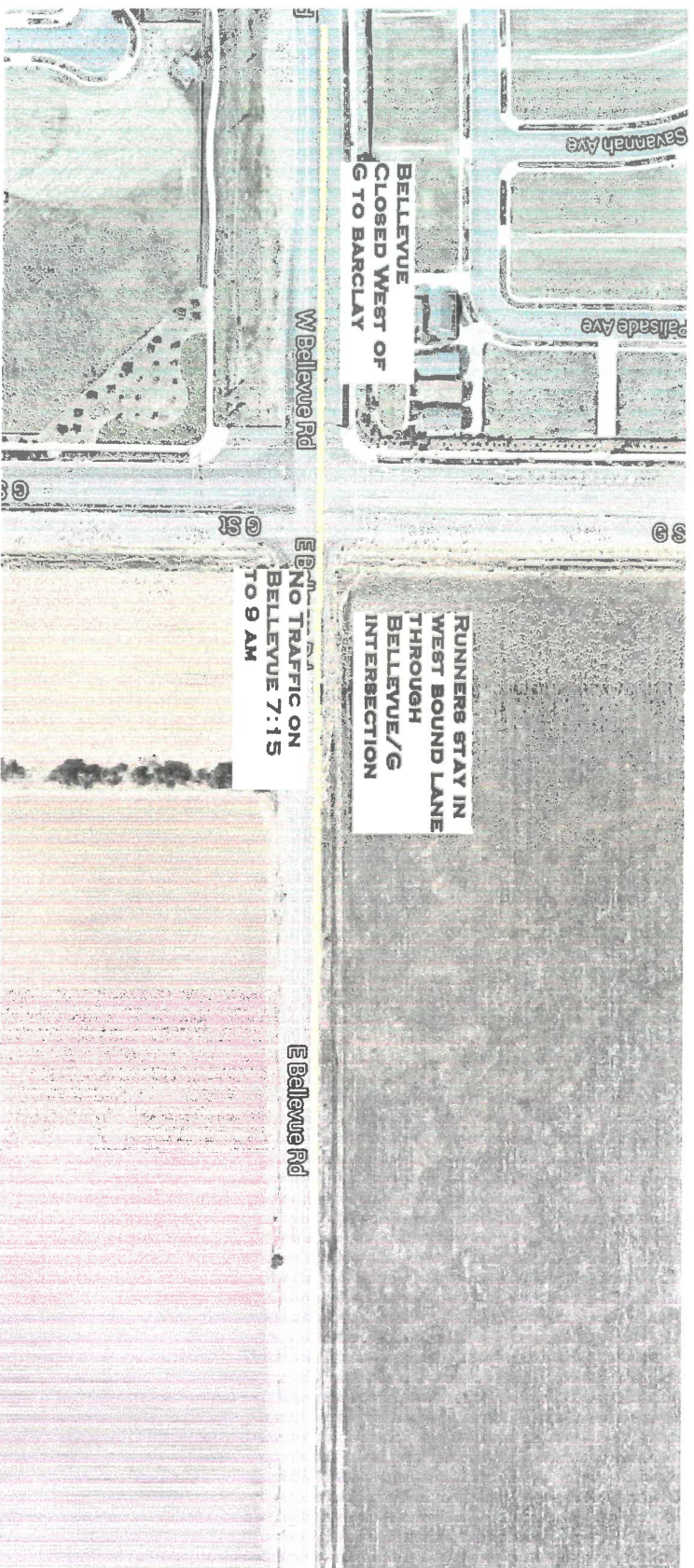
Start/Finish Area (UC Merced Campus)



Pursuant to contract with UCM, campus parking, course routing, and traffic will all be coordinated through UC Merced's Recreation & Athletics Department and UC Campus police. The recreation department will be utilizing 8 student workers and 1 campus police officer for traffic and course control for the on-campus portion of the run. UCM will provide traffic direction and barricades on campus. The Event Committee for the Half Marathon will provide directional signage, to be placed by UCM students/staff. UCM will also coordinate custodial services following the run.







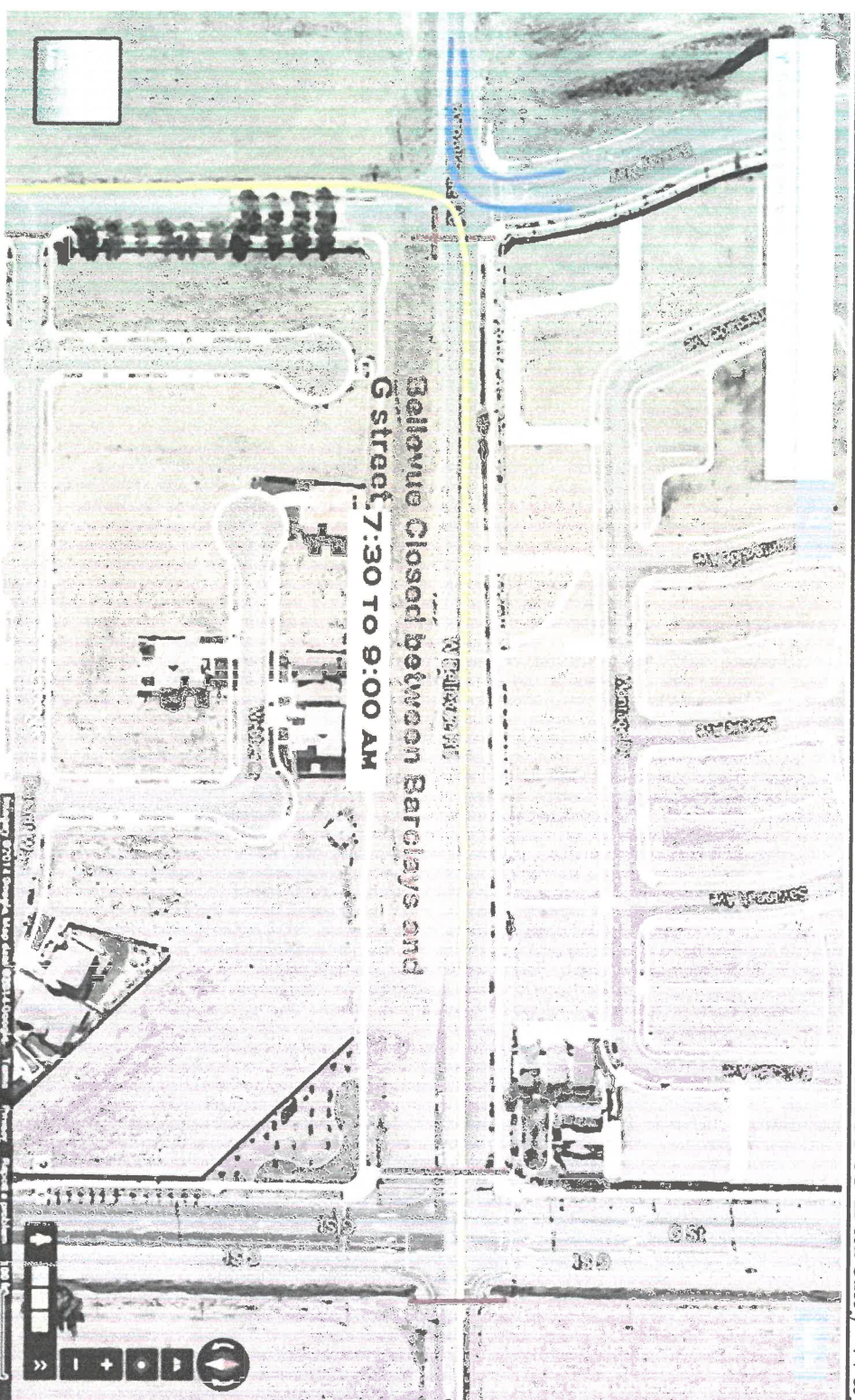
Signage along G Street prior to Bellevue Intersection

Lighted Traffic Sign along North-Bound G, 1/4 mile South of Bellevue indicating event in progress. Thru traffic will be flagged through the Bellevue and G intersection, but the runners crossing G must have right-of-way.

Runners will remain in West-Bound Lane on Bellevue as they proceed across G Street – Bellevue Intersection; Bellevue Road will be barricaded to traffic turning East Bound.

Traffic Control: MPD for traffic control

Close Bellevue to all traffic from 7:30 a.m. to 9:00 a.m. from G street to Barclay Way.

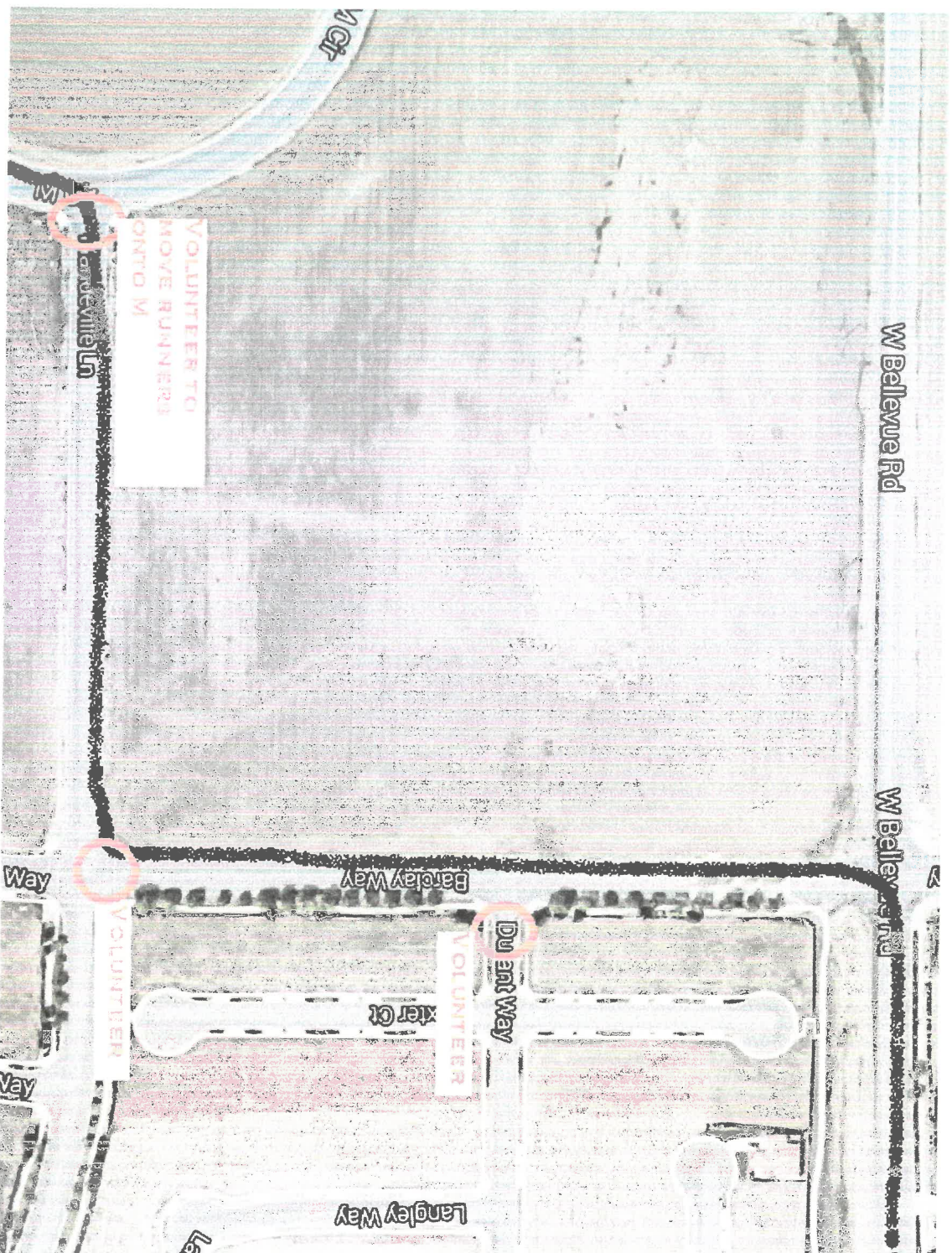


Traffic Control: MPD Barclay/Bellevue Intersection.

Cars proceeding East on Bellevue towards G will only be permitted to turn LEFT and proceed behind El Cap to Farmers Rd. ; No West-Bound traffic from G to Barclay (Traffic must go up to Farmer's Rd and proceed behind El Cap High School.

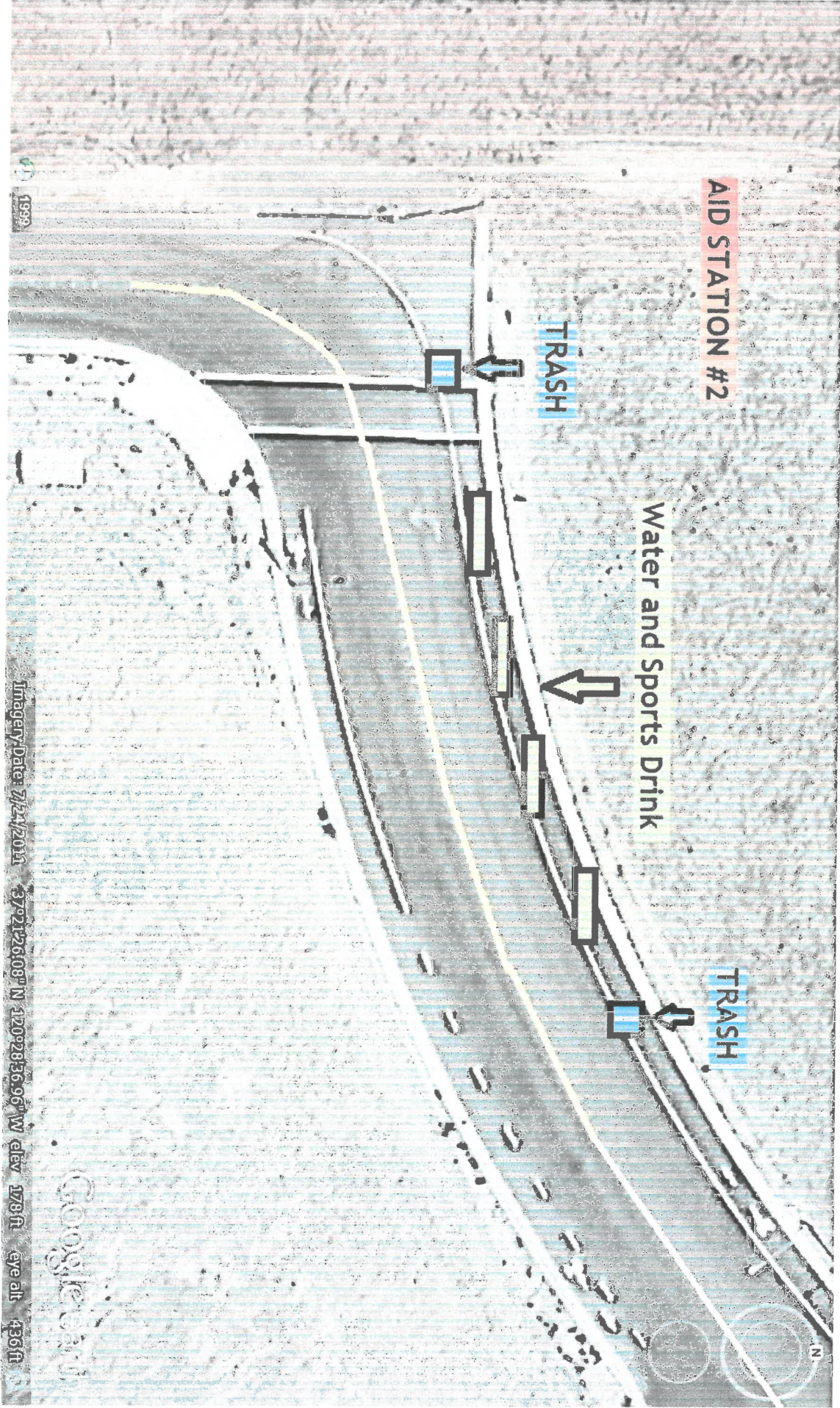
Traffic in Blue; Runners on Yellow lines.

- Volunteer at Barclay Way/ Durant to prevent cars turning south-bound on Barclay Way
- Volunteer at Mandeville and Barclay Way to prevent cars from turning onto Mandeville west
- Volunteer at Mandeville and M Street to prevent north-bound M Street cars from impeding runners



AID STATION # 2:

Location: Just after Bancroft Drive intersects M



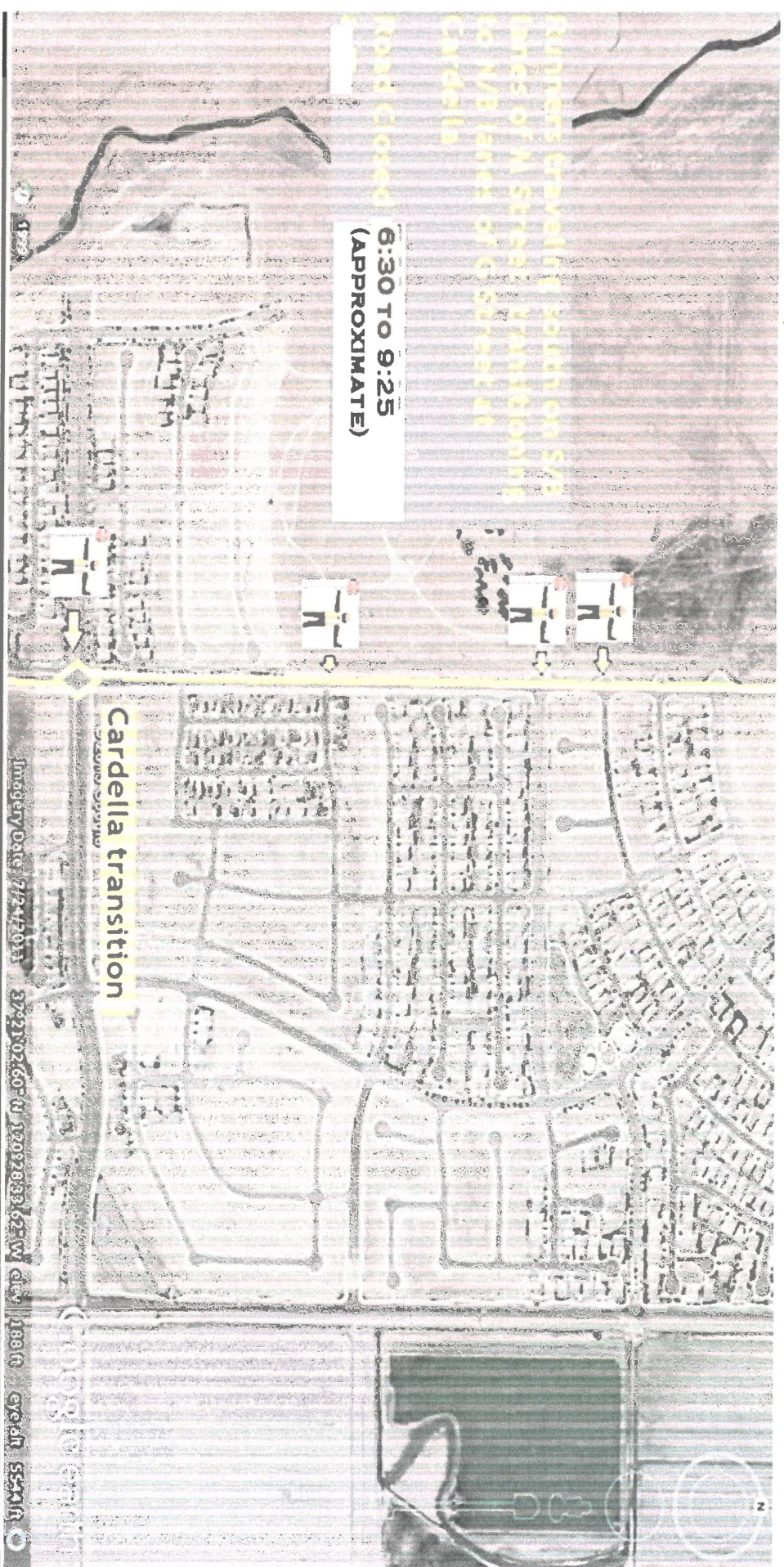
Volunteers at Aid Station: 5-10 Community Volunteers (students and community members)

M Street (south-bound) to Cardella:

South-Bound lane of M Street closed to Cardella from 6:30 to 9:25 a.m. (we anticipate reopening by 8:30 in rolling closures); Please note – barriers will not go up until volunteers arrive at approximately 7:00 to 7:15.

Runners transitioning from South-Bound side of M to North-bound side at Cardella Intersection;

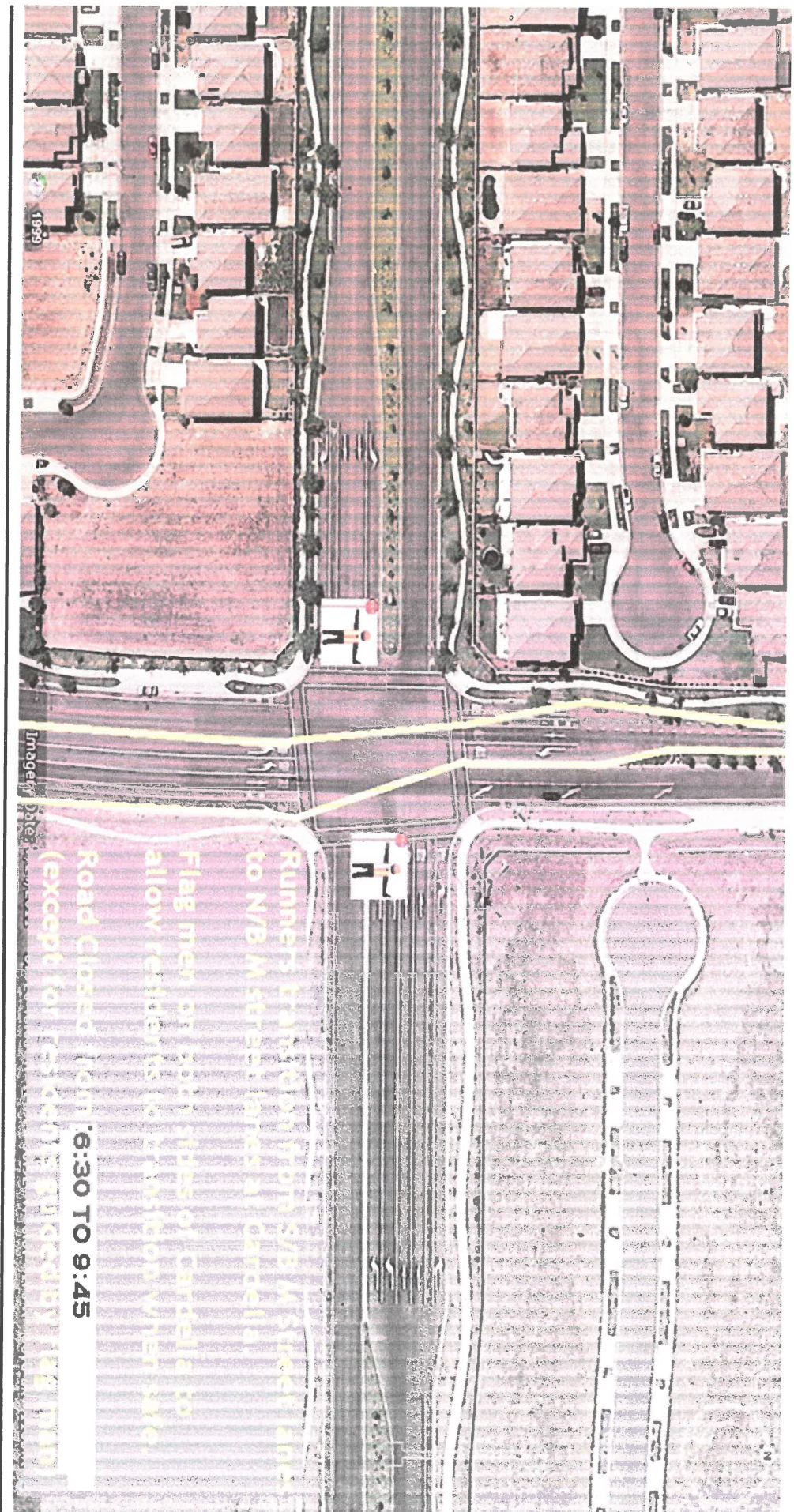
At least 1 Community Volunteers at the three intersections below to prevent left-hand turns onto S-bound M (Tolman; Arrow Wood; and Hart)



3 Community Volunteers over age 25 for intersections

CARDELLA INTERSECTION

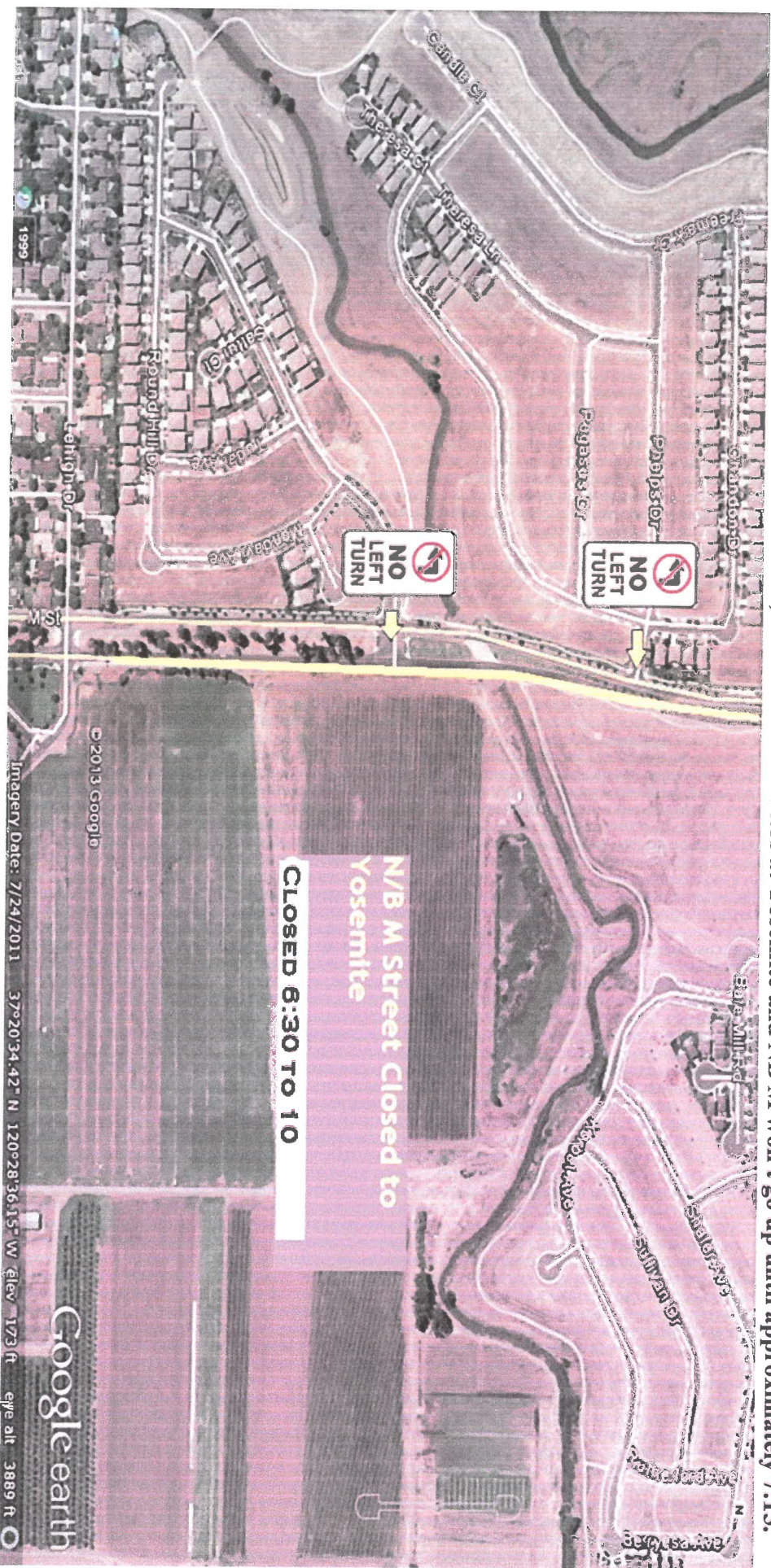
2-3 Community Volunteers (over age 25) to control traffic through Cardella and transition runners from south-bound side of M to North bound side. North-bound M will be closed to all traffic. Cross traffic on Cardella will be permitted to cross M, but runners will be given the right-of-way. East-bound Cardella traffic will be permitted to turn left to North-bound M; and West Bound Cardella traffic will be able to cross Cardella, turn right to north-bound M, or turn left to south-bound M, but runners will have the right-of-way.



ALL LANES OF NORTH-BOUND M CLOSED BETWEEN CARDELLA and YOSEMITE – 6:30 TO 10 A.M.;

NO LEFT TURN SIGNS PLACED ON SOUTH-BOUND TRAFFIC LANES AT PHELPS AND IRONSTONE INTERSECTIONS;
CONES TO BLOCK ACCESS TO NORTH-BOUND SIDE OF M BOULEVARD AT PHELPS AND IRONSTONE INTERSECTIONS.

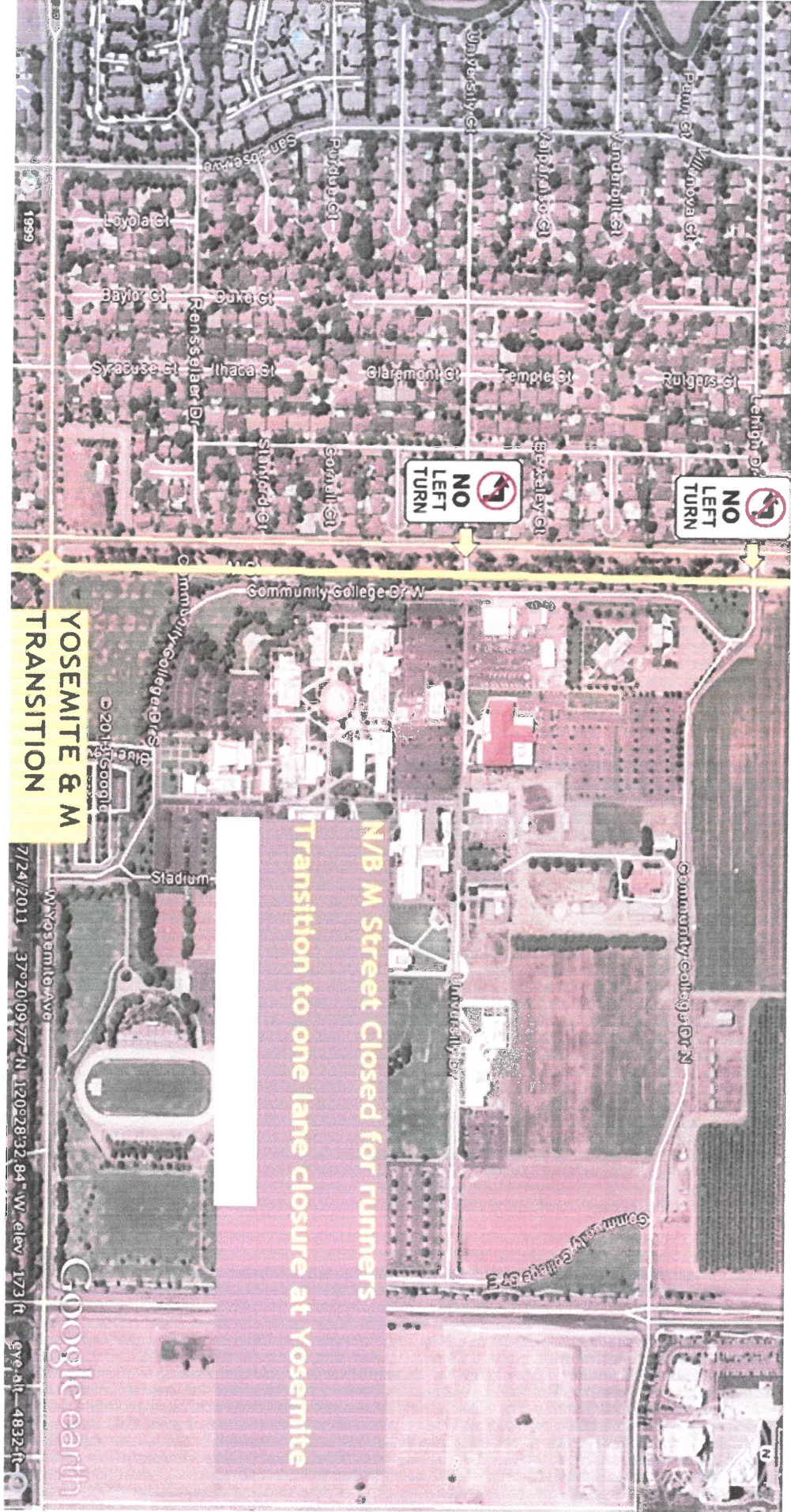
*** Although we request permission to close the road from 6:30 to 10 a.m. to allow us to set volunteers in place, erect the barriers and signage, and close the course to traffic in this location, final closure barriers at Yosemite and NB M won't go up until approximately 7:15.



1 Community Volunteer at both Phelps and Ironstone to prevent cars from moving through cones to North-Bound Side of M; Please note – barricades at these intersections will not go up until volunteers arrive at approximately 7:00 to 7:15.

1-2 Community Volunteers at each intersection of Leigh Drive and University Court to prevent South-Bound Traffic or cross traffic from turning onto North-Bound M Street;

No Left Turn signs on South-Bound M Street at Lehigh and University Court intersections with M;
Cones to block access to North-Bound side of M.



YOSEMITE AND M INTERSECTION: MPD

North-Bound M closed North of Yosemite;

1 Lane of North-Bound M closed South of Yosemite to Rascal Bike Path;

East-Bound Yosemite Traffic – no Left Turn onto North M Street (closed)

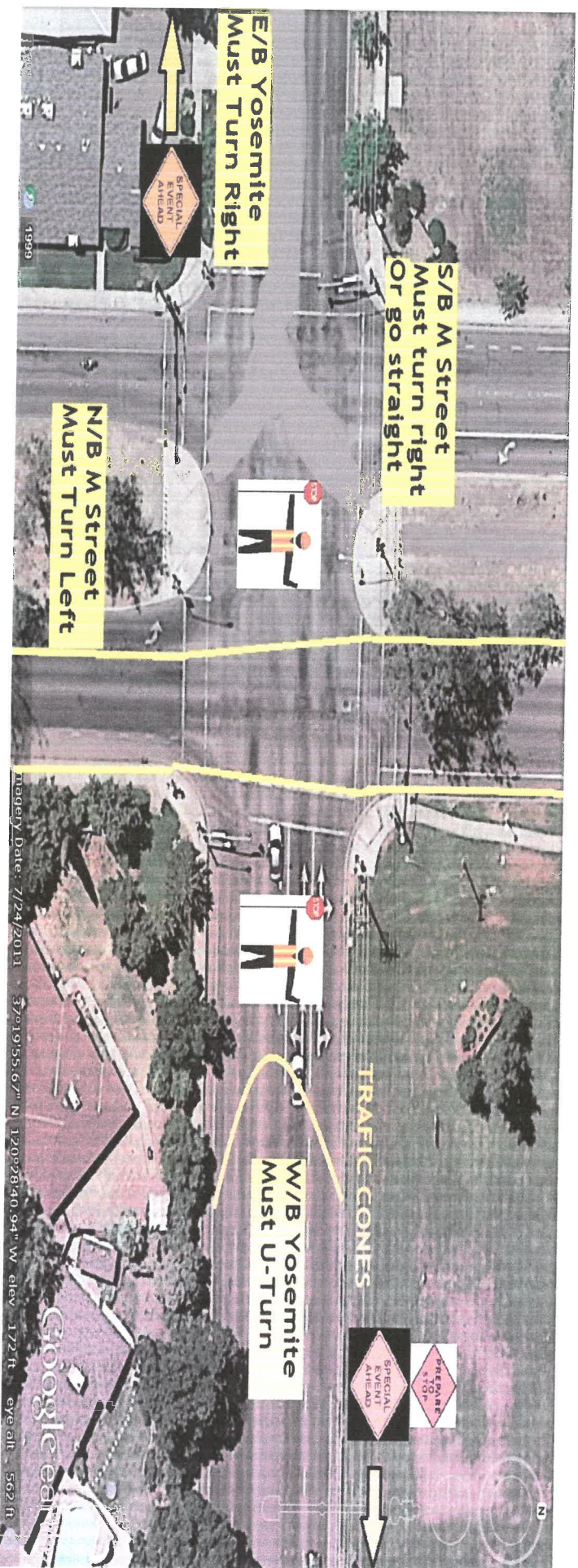
--may turn right onto South-Bound M only

West-Bound Yosemite Traffic – NO THRU Traffic across M – U-turn only.

South-Bound M Traffic – NO LEFT TURN onto Yosemite

North-Bound M Traffic – MUST TURN LEFT; NO RIGHT TURN onto Yosemite; NO STRAIGHT onto North-bound M.

Cones utilized to block traffic according to the outline above.



North-Bound M from Yosemite to Rascal Bike Path:

North-Bound M one lane closed to Yosemite;

No left turn signs on South-Bound M at W. Donna and Buena Vista Intersections;

Cones at W. Donna and Buena Vista Intersections to prevent South-Bound traffic from making a left turn onto North-Bound M;

1-2 Community Volunteers each at W. Donna and Buena Vista Intersections to prevent cross traffic;

Cones blocking W. Donna and Buena Vista access to M Street;

1 Community Volunteer to the entrance of apartment buildings to allow traffic to cross onto M, but maintain runner right-of-way as shown with icons below.



***For this portion of the course, we anticipate laying cones and restricting it to one lane NB from Rascal Bike Path to M Street at approximately 6-6:30 a.m.

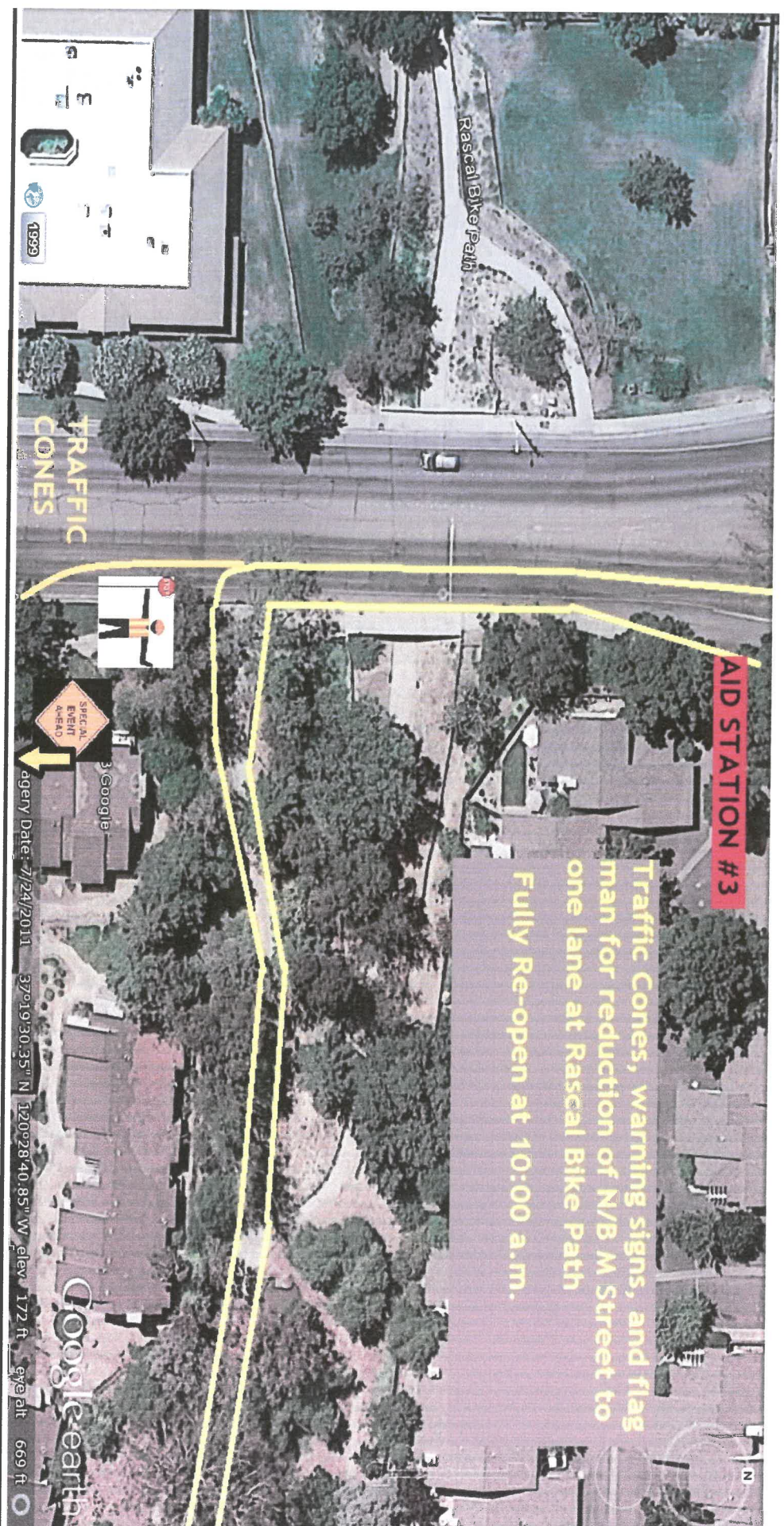
Aid Station # 3 and Rascal Bike Path Transition:

Aid Station #3 (5-10 volunteers over age 12 with adult aid station captain);

Signage on North-Bound M 1/4 mile prior to Rascal Bike Path indicating runners ahead;

Cones and truck utilized to create barricade to transition cars into only ONE lane north-bound on M prior to Rascal Bike Path;

Community Volunteer flag person to direct traffic to move LEFT on North-Bound M into ONE lane.

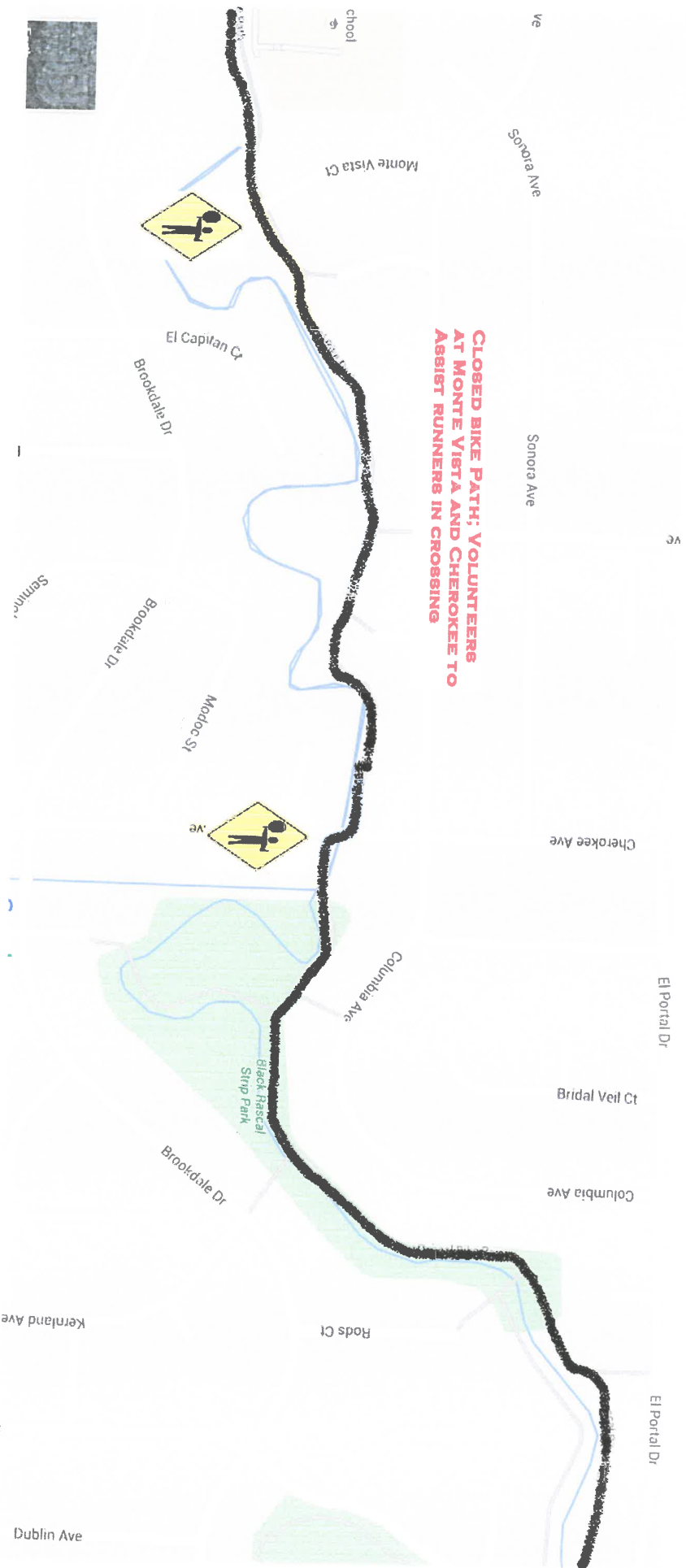


Aid Station #3 (On North-Bound M, just prior to Rascal Bike Path)



Rascal Bike Path – No Road Closures Needed



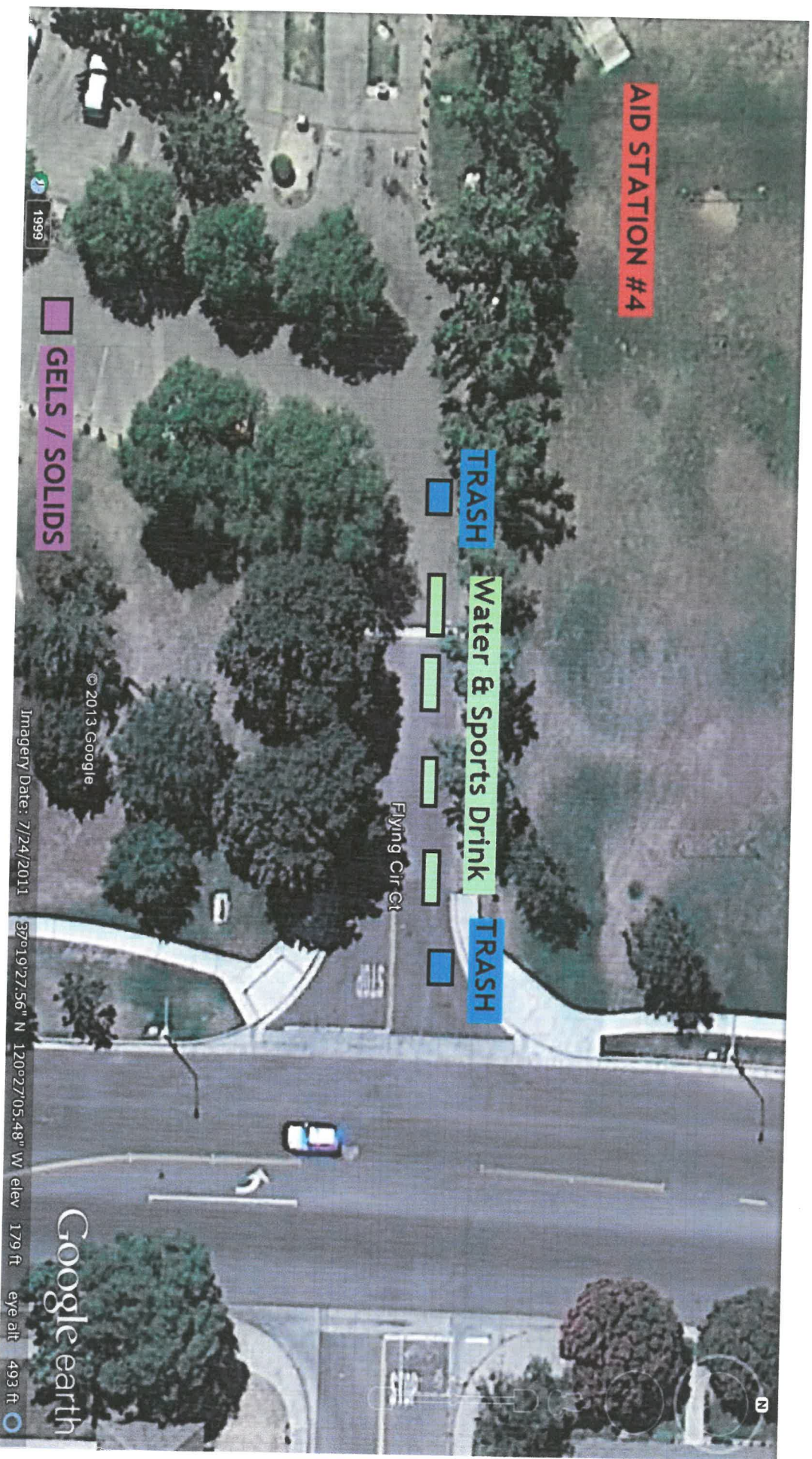


2-4 Community Volunteers as Flaggers to stop traffic for runners-right-of-way at Monte Vista Court and Cherokee Avenue

Aid Station #4: Rahilly Park

Close Park to Traffic in the Rahilly parking lot between 7 to 11:30 a.m.
5-10 volunteers;

The Aid station will be set up as pictured below, but it will be moved to Rascal Bike Path just before it proceeds under Parsons; The aid station will no longer be staged in the parking lot.



BIKE PATH AND MCKEE INTERSECTION

Traffic controlled by MPD through 11:30 a.m.;

Runners cross to the North-Bound side of McKee from Bike Path;

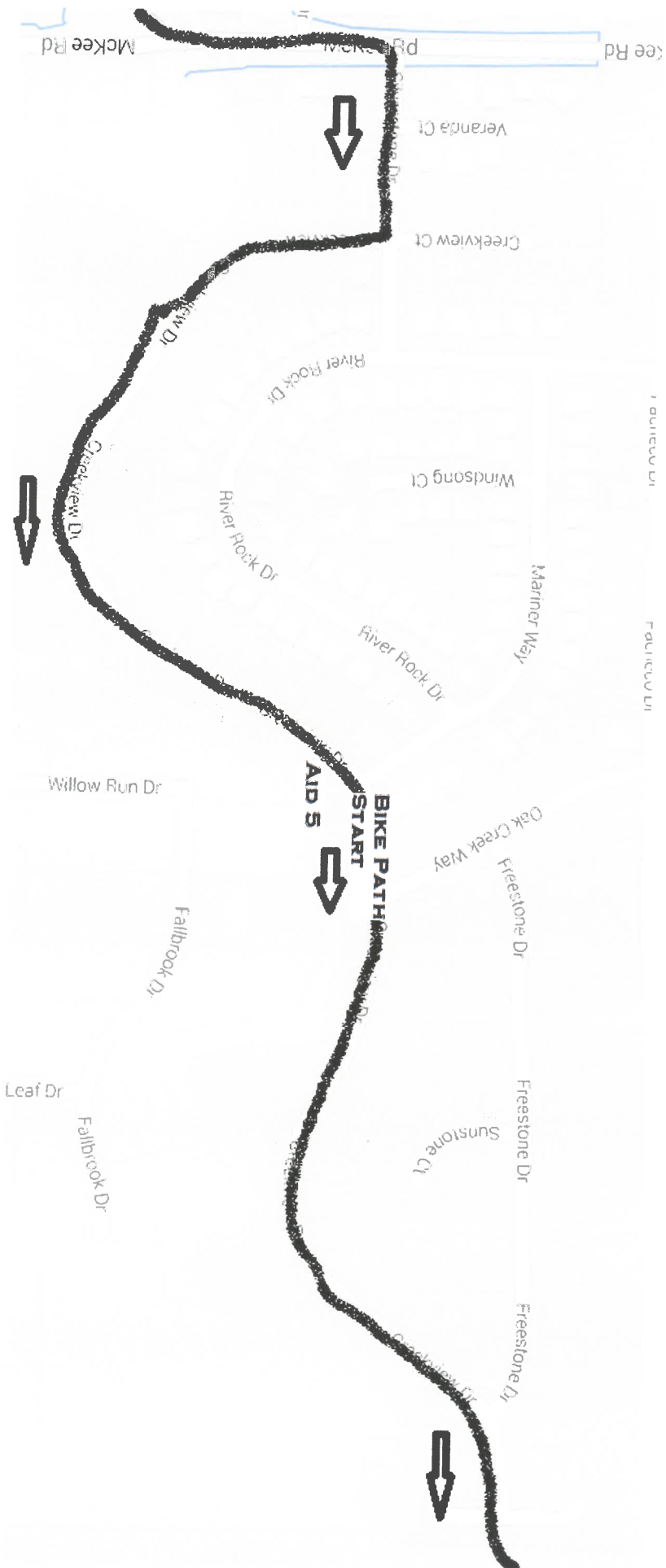
Signage in advance of intersection on both North and South bound sides of McKee



MPD Controlled Intersection; We can certainly keep runners on the SB side of McKee until Silverstone intersection, but moving immediately to the NB alleviates any runner/traffic interface at El Portal and there is more shoulder to use on the NB side.

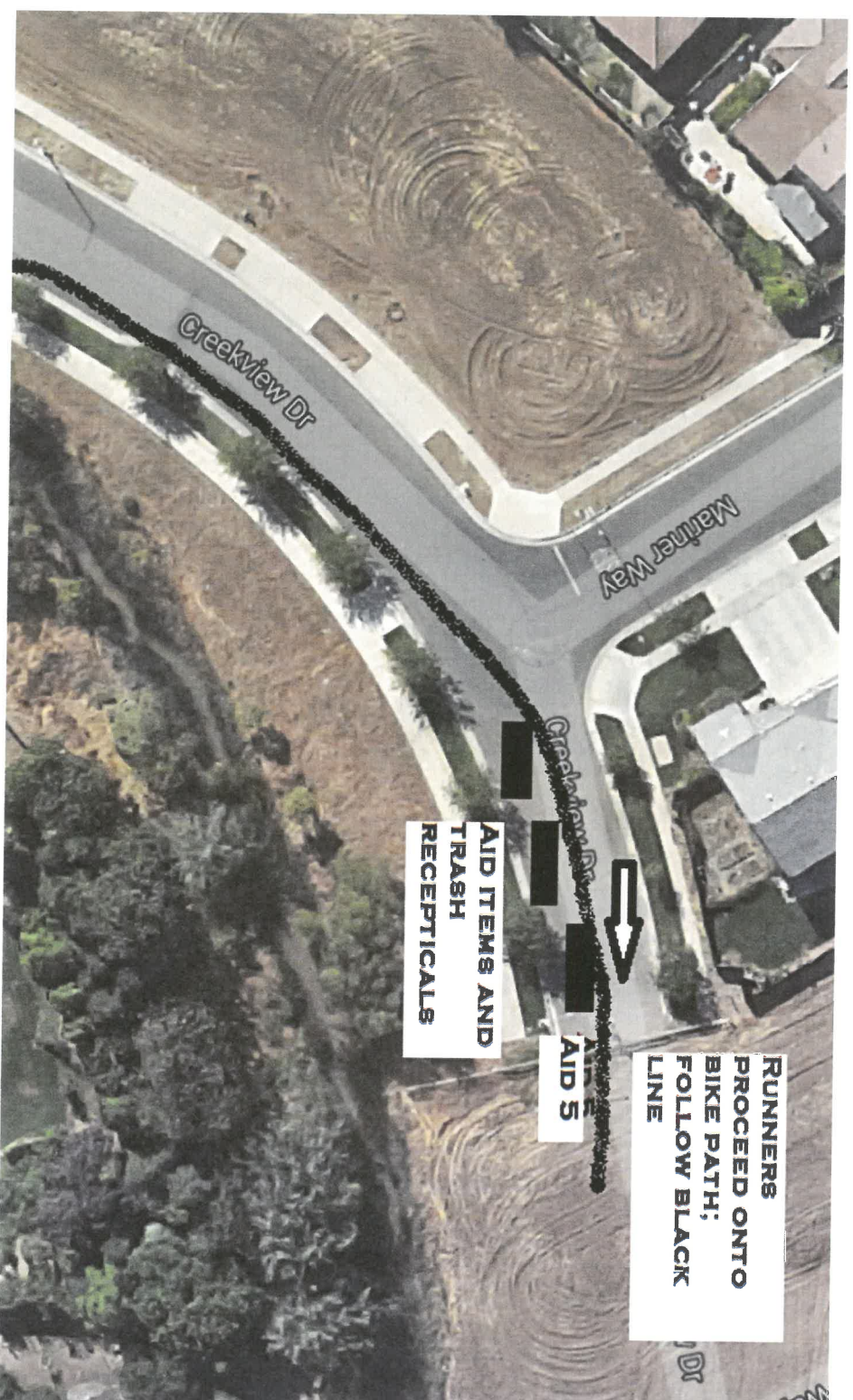
MCKEE AND SILVERSTONE INTERSECTION

Presuming runners are proceeding on the NB side, they will turn East (right) onto Silverstone using the east-bound shoulder, and then turning South onto Creekside and proceeding on the right shoulder (with traffic) all the way to the new bike path section.



AID STATION 5

5-10 volunteers to assist runners with aid; porta pottie; Runners will enter bike path at Aid 5.



Runners Follow New Bike Path Immediately After Mariner Way Intersects with Creekview Drive;
No closures needed over bike path section



YOSEMITE AVE INTERSECTION:

This is a proposed MPD controlled intersection. We will place signage on both the Westbound and East Bound lanes of Yosemite 1/4 mile ahead of the intersection warning motorists they may be required to stop; We will also place a special event sign on Southbound Lake for motorists who may wish to turn East Bound onto Yosemite.



AID STATION NO. 6 (On Vern Davis Bike Path) 5-10 volunteers who will provide water/electrolyte to participants at approximately mile 11;

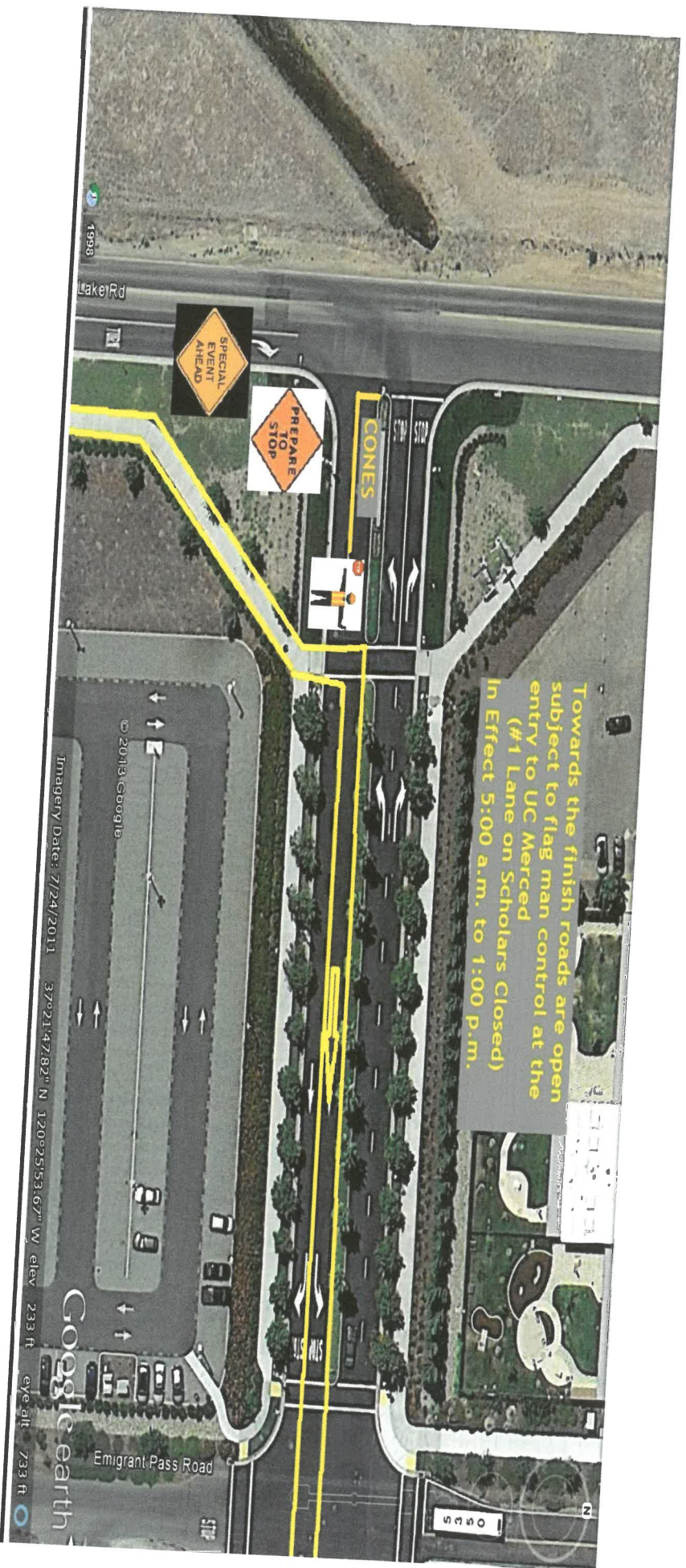


Aid Station No. 7 (on Vern Davis Bike Path)



FINISH LINE

Traffic Controlled by UCM from campus entrance to finish line





Imagery Date: 7/24/2011 37°21'50.86" N 120°25'35.94" W elev 226 ft eye alt 1934 ft

Google earth