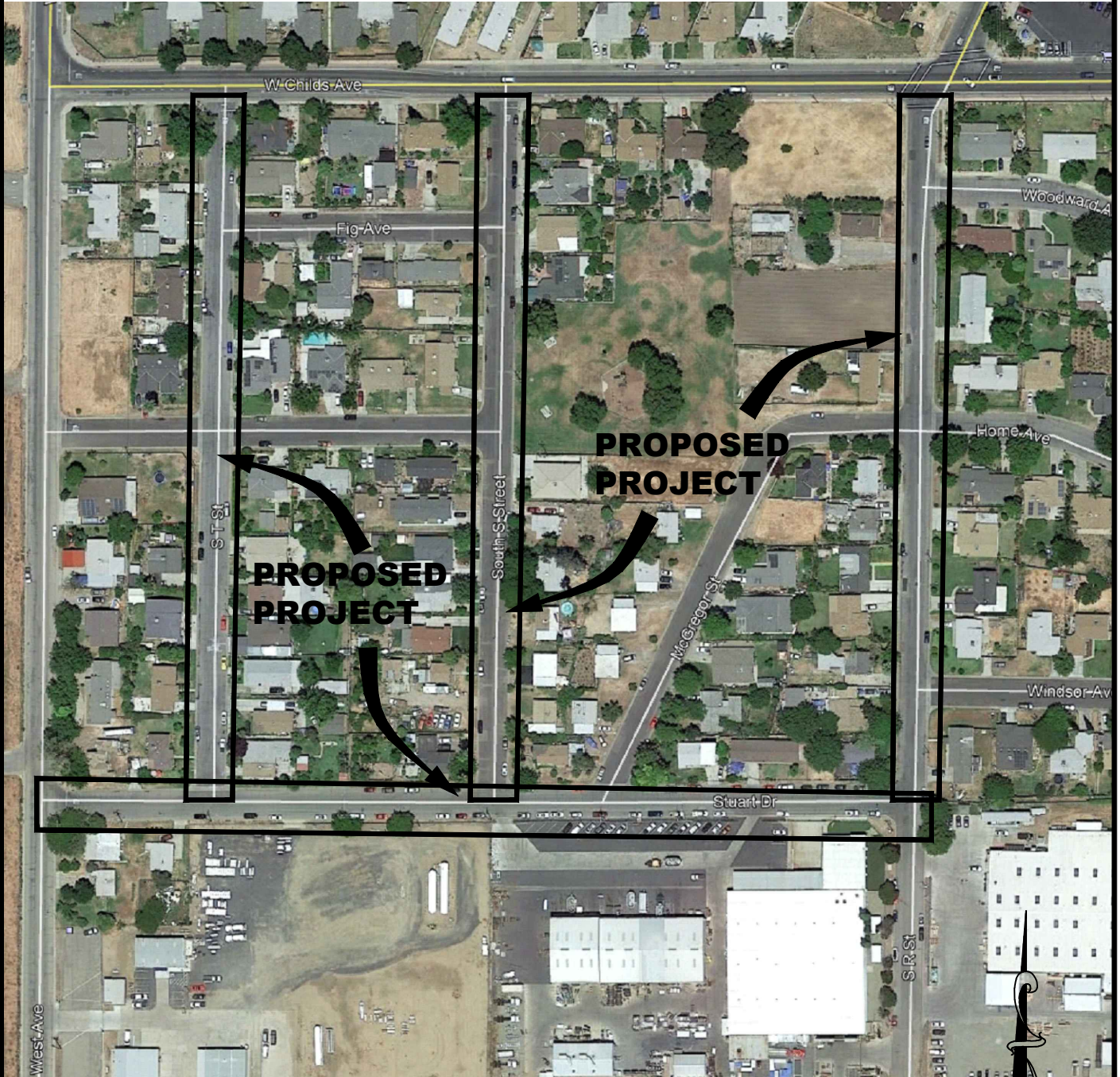


\\vm-merfile01\HOME\A\Other\Sons\My Documents\CMAQ\South Merced application\APPLICATION FOR R, S, T AND STUART\south merced r, s, t and stuart.dwg



SCALE: N.T.S.



*City of Merced*  
 "Gateway to Yosemite"  
**DEVELOPMENT SERVICES**  
 ENGINEERING PROJECTS AND STANDARDS  
 678 W. 18th Street (209) 385-6846

**5' WIDE SIDEWALK ON  
 SOUTH R ST, SOUTH S ST  
 SOUTH T AND STUART DR**

DR. BY: ---
DATE: 12/28/18
CH. BY: ##
DATE: 5/9/08
File No. XX
SCALE: AS SHOWN