

Landscape Notes:  
1. All landscaping will be drought-tolerant species and will be designed and installed in compliance with Bay Friendly design guidelines. Soils tested and amended. Maintenance agreement required.  
2. Trees: Typical 15 gal. Oregon Ash, Chitalpa, Chinese Pistache, Specimen 24" box Douglas Oak, and others  
3. Shrubs and Ground Cover: Typical 5 gal. Sunset Rockrose, CA Coffeeberry, Pink Rhododendron, Mexican Sage, 1 Gal. Carmel Sur Marzani, Lantana, Coral Bells, and others  
4. Grasses/Sedges: Fescue varieties, Bio-Filtration Sod, Native Mow-Free Sod  
5. Soils: Hydrosed Native Ornamental Bioswale Mix  
Fescue/Hairgrass/Sedge  
6. Irrigation: Conform to water-use reduction measures and CA Maximum Applied Water Allowance regulations. Fully automated drip irrigation system with smart irrigation controller, backflow preventer, separate irrigation water meter, remote control valves and weather sensor. Bubbler typical, minimize spray emitters.  
7. Accessories: All trees staked, root barriers adjacent to paving, all planters to have 3" mulch layer.

**PYATOK**  
1511 TELEGRAPH AVE. SUITE 200  
SUNLAND, CA 94512  
510.465.7010 p | 510.465.8575 f  
www.pyatok.com

THE RICHMAN GROUP  
OF CALIFORNIA  
420 31ST STREET, SUITE B1  
NEWPORT BEACH, CA 92663

Childs and B Street,  
TOD Affordable Housing  
905 B STREET, MERCED CA 95341

STAMP:

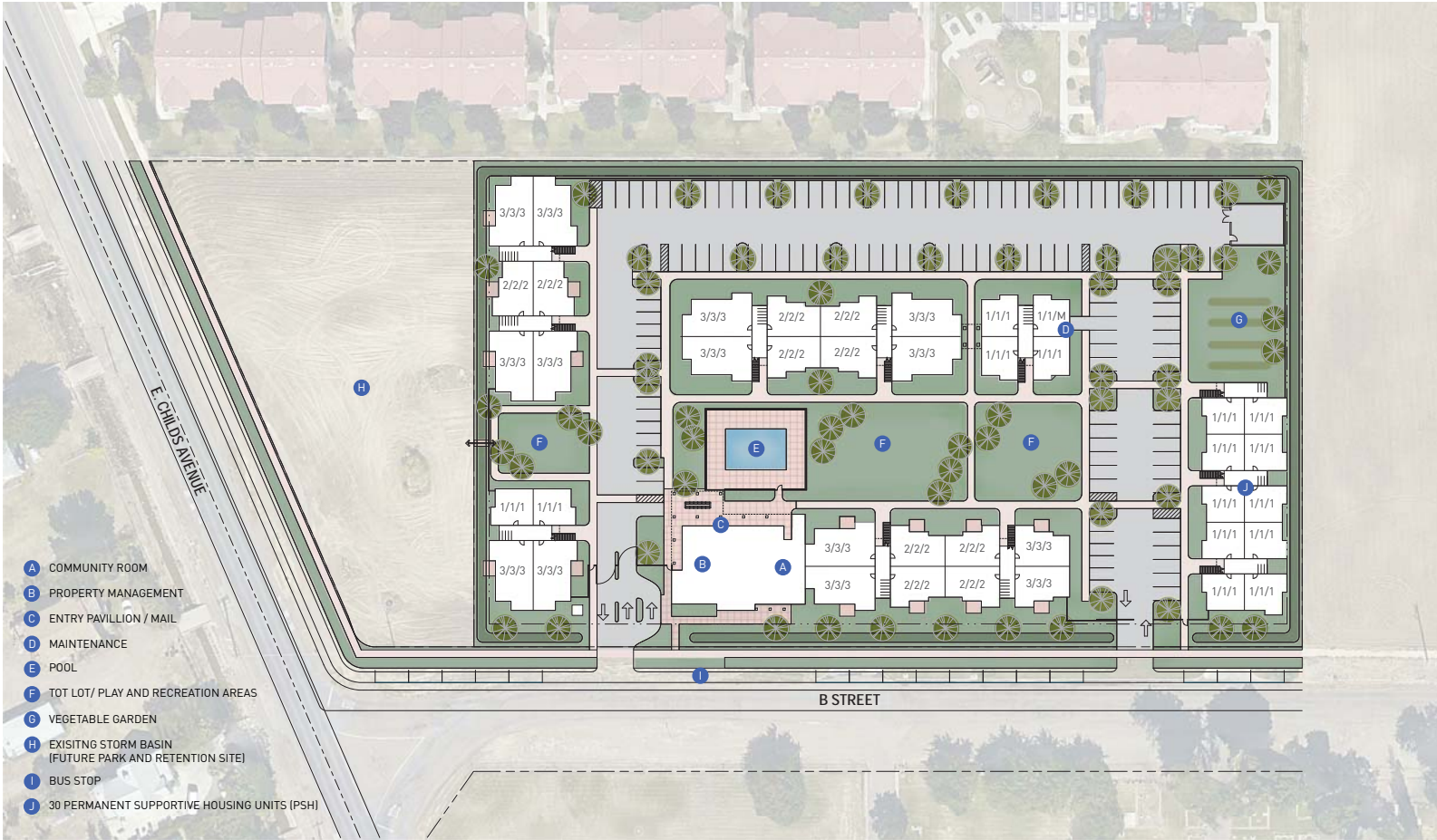
REVISION SCHEDULE		DATE
NO.	ISSUE	DATE
JOB NUMBER:	1708	
DRAWN BY:	Author	
CHECKED BY:	Checker	
DATE:	5 November, 2018	
SCALE:	1" = 32'-0"	
TITLE:		
ILLUSTRATED SITE PLAN		

SHEET:

**A1.2**

PRELIMINARY - Not for Construction -

© 2017 PYATOK ARCHITECTURE & LANDSCAPE



ILLUSTRATED SITE PLAN ①  
1" = 32'-0"

STAMP:

REVISION SCHEDULE  
NO. | ISSUE | DATE

JOB NUMBER: 1708  
DRAWN BY: Author  
CHECKED BY: Chaper  
DATE: 5 November, 2018  
SCALE: 1/16" = 1'-0"  
TITLE: ELEVATIONS

SHEET:

**A3.0**

PRELIMINARY - Not for Construction -

© 2017 PYATOK ARCHITECTURAL & DESIGN GROUP

