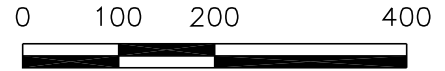


SCALE 1"=200'



MAP OF
MERCED COLONY
4 OP 24, MCR

T.7 S., R.14., M.D.B.&M.
SECTION 34

MERCED COUNTY
CITY LIMIT LINE
MAP OF
SMITH'S MERCED TRACT
5 OP 4, MCR
T.8 S., R.14., M.D.B.&M.
SECTION 3

REFERENCED RECORD MAPS

RECORD OF SURVEY FOR
DEPARTMENT OF TRANSPORTATION
VOL 49 OF RS, PGS 45-50, MCR
AS DOC #2011-034339.

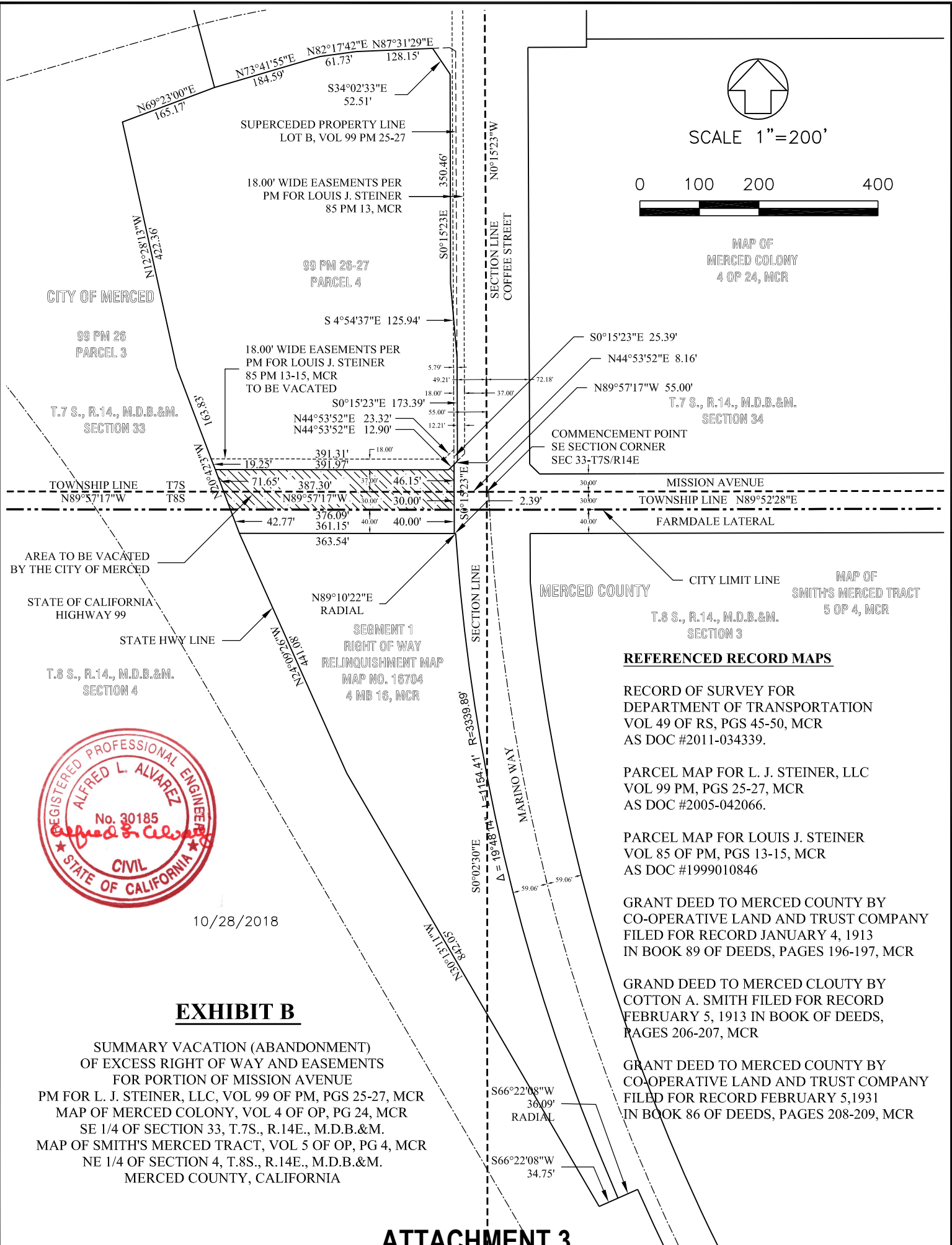
PARCEL MAP FOR L. J. STEINER, LLC
VOL 99 PM, PGS 25-27, MCR
AS DOC #2005-042066.

PARCEL MAP FOR LOUIS J. STEINER
VOL 85 OF PM, PGS 13-15, MCR
AS DOC #1999010846

GRANT DEED TO MERCED COUNTY BY
CO-OPERATIVE LAND AND TRUST COMPANY
FILED FOR RECORD JANUARY 4, 1913
IN BOOK 89 OF DEEDS, PAGES 196-197, MCR

GRANT DEED TO MERCED CLOUTY BY
COTTON A. SMITH FILED FOR RECORD
FEBRUARY 5, 1913 IN BOOK OF DEEDS,
PAGES 206-207, MCR

GRANT DEED TO MERCED COUNTY BY
CO-OPERATIVE LAND AND TRUST COMPANY
FILED FOR RECORD FEBRUARY 5, 1913
IN BOOK 86 OF DEEDS, PAGES 208-209, MCR



10/28/2018

EXHIBIT B

SUMMARY VACATION (ABANDONMENT)
OF EXCESS RIGHT OF WAY AND EASEMENTS
FOR PORTION OF MISSION AVENUE
PM FOR L. J. STEINER, LLC, VOL 99 OF PM, PGS 25-27, MCR
MAP OF MERCED COLONY, VOL 4 OF OP, PG 24, MCR
SE 1/4 OF SECTION 33, T.7S., R.14E., M.D.B.&M.
MAP OF SMITH'S MERCED TRACT, VOL 5 OF OP, PG 4, MCR
NE 1/4 OF SECTION 4, T.8S., R.14E., M.D.B.&M.
MERCED COUNTY, CALIFORNIA