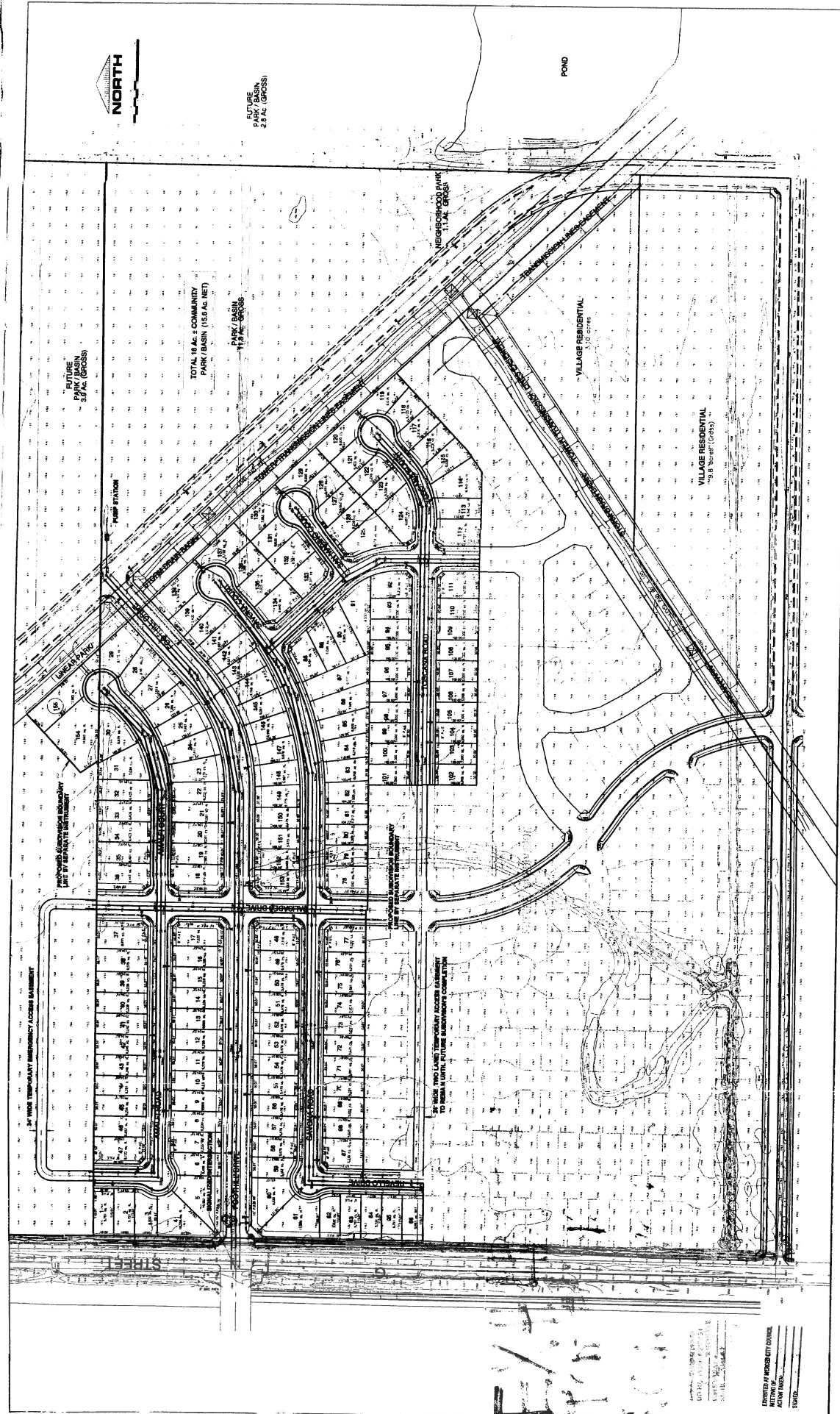


VTSM #1292 - EXPIRED



2

VESTING TENTATIVE SUBDIVISION MAP FOR
THE PALISADES
 ABSOLUTE, LLC / LEECO, LLC
 PORTION SECTION 5 & 8, T.7 S., R.14 E., M.D.B.A. M.
 CITY OF MERCED, CALIF.

TENTATIVE MAP
 ABSOLUTE, LLC / LEECO, LLC
 9 AMER PARK PLACE EAST
 SUITE 101
 FRESNO CA 93720
 PROJECT: 559-434-1234

GV
 GOLDEN VALLEY
 ENGINEERING & SURVEYING
 400 W. 18th Street - P.O. Box 946 - Merced, CA 95340
 Phone: (209) 725-0229 - Fax: (209) 725-0224

NOTES:

1. THIS MAP IS A TENTATIVE MAP AND IS NOT A GUARANTEE OF ANY KIND.
2. THE CITY OF MERCED HAS REVIEWED THIS MAP AND HAS NOTED ANY CORRECTIONS TO BE MADE.
3. THE CITY OF MERCED HAS REVIEWED THIS MAP AND HAS NOTED ANY CORRECTIONS TO BE MADE.
4. THE CITY OF MERCED HAS REVIEWED THIS MAP AND HAS NOTED ANY CORRECTIONS TO BE MADE.

EXISTING AT RECORD CITY DRAWING:

DATE:	
BY:	
CHECKED:	
DATE:	

ATTACHMENT 6