

Proposition 68 Grant- \$200,000- \$8,500,000 Per Request

This competitive program will create new parks and new recreation opportunities in critically underserved communities across California. Due: August 5, 2019

CRITICALLY UNDERSERVED COMMUNITY – an area within PROXIMITY of a PROJECT SITE that has a ratio of less than 3 acres of PARK SPACE per 1,000 residents, or a median household income below \$51,026 based on the response to Project Selection Criteria 1 or 2.

TYPES OF PROJECTS A PROJECT must involve either DEVELOPMENT or a combination of ACQUISITION and DEVELOPMENT to: 1. Create a NEW PARK, or 2. EXPAND an EXISTING PARK, or 3. RENOVATE an EXISTING PARK

All PROJECTS must create or RENOVATE at least one RECREATION FEATURE. Examples of RECREATION FEATURES include but are not limited to the following:

☐ ACQUISITION of land:

☐ Combined with DEVELOPMENT of a NEW RECREATION FEATURE.

OR

☐ Already has a RECREATION FEATURE for public use at close of escrow.

☐ Aquatic center, swimming pool, splash pad, fishing pier or paddling launch site

☐ Amphitheater/performing arts dance, music, and theater stage

☐ Athletic fields (soccer regulation or “futbol-rapido”, baseball, softball, football, etc.)

☐ Athletic courts (basketball, “futsal”, tennis, pickleball, etc.)

☐ Community gardens, botanical or demonstration gardens and orchards

☐ Community/Recreation center (only if it will be in or ADJACENT to a PARK)

☐ Dog park

☐ Jogging and walking loop, par course, running track, walking labyrinth

☐ Non-motorized trail, pedestrian/bicycle bridge, greenbelt/linear PARK

☐ Outdoor gym exercise equipment (stations fixed into ground)

☐ Open space and natural area for public recreation use

☐ Picnic/Bar-B-Que areas

☐ Playground and tot lot

☐ Plaza, Zocalo, Gazebo

☐ Public art (mosaic tiles, sculptures, murals)

☐ Skate park, skating rink, and BMX or pump track (non-motorized bike tracks)

☐ Lighting to allow for extended night time use of a RECREATION FEATURE

☐ Shade structure/COVERED PARK areas over a RECREATION FEATURE to allow for extended day time use

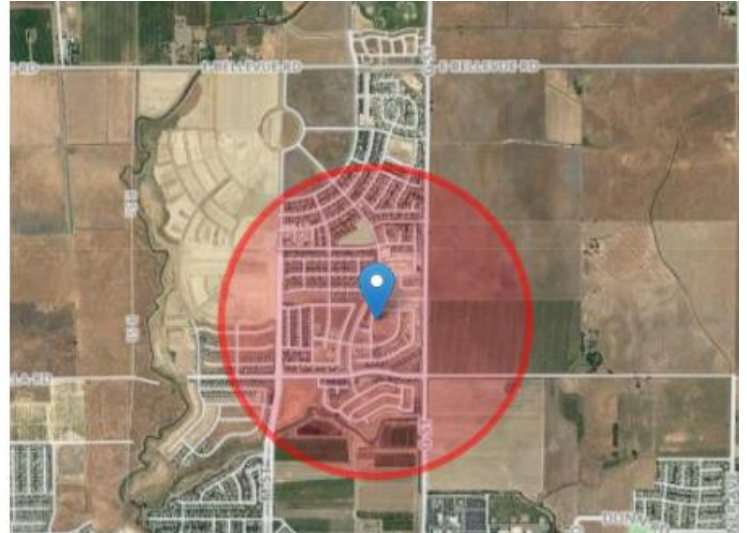
Potential Project Site #1

Build Lester K. Yoshida Park-Meets Criteria #1

Parks per 1,000: 2.02 acres

Results for Merced (County: Merced)

Latitude, longitude	37.3492472, -120.4718256	
Total Population	1,762	②
Youth Population	401	②
Senior Population	37	②
Median Household Income	\$72,808	②
Per Capita Income	\$26,842	②
People in Poverty	235	②
Households without Access to a Car	1	②
Parks total area	3.56 acres	②
Parks per 1000 people	2.02 acres	②



Potential Project Site #2

Build Charles Ogletree Park- Meets Criteria #1

Parks per 1,000: 2.88 acres

Find Your Community:

GET REPORT

Click the pin, then click a location on the map.

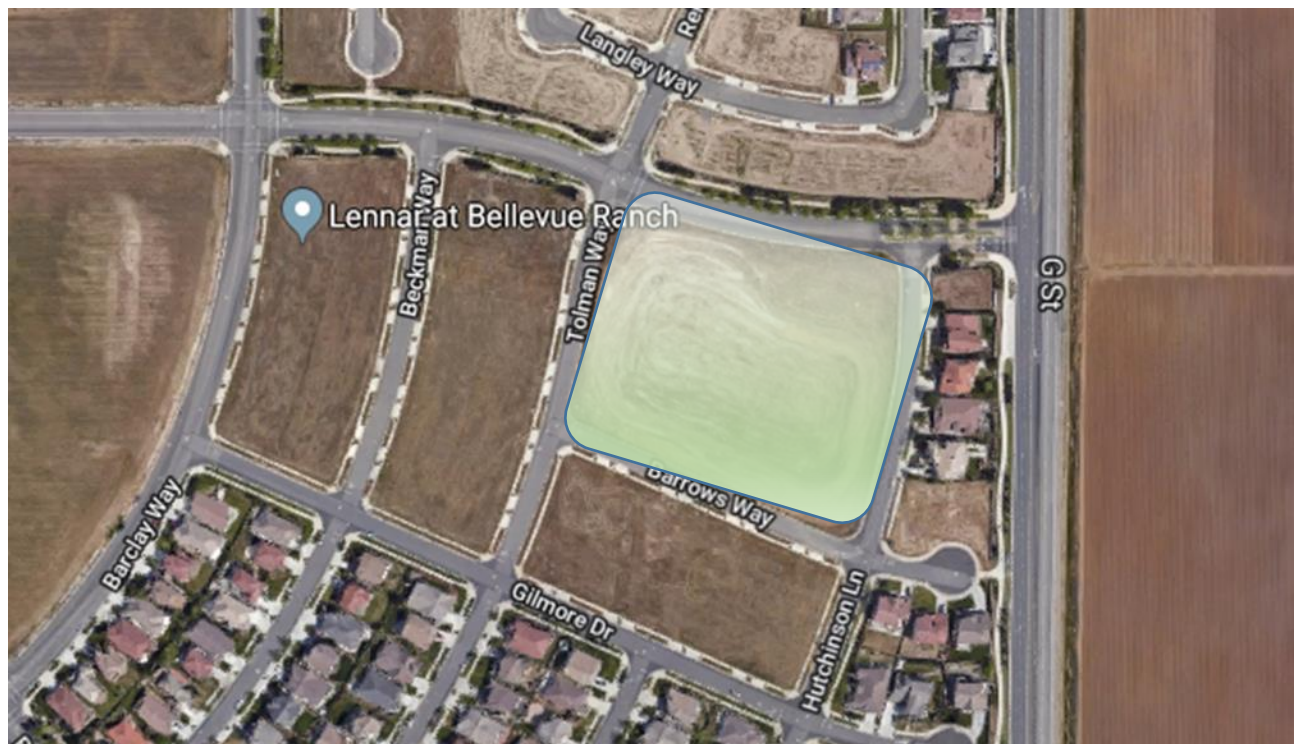
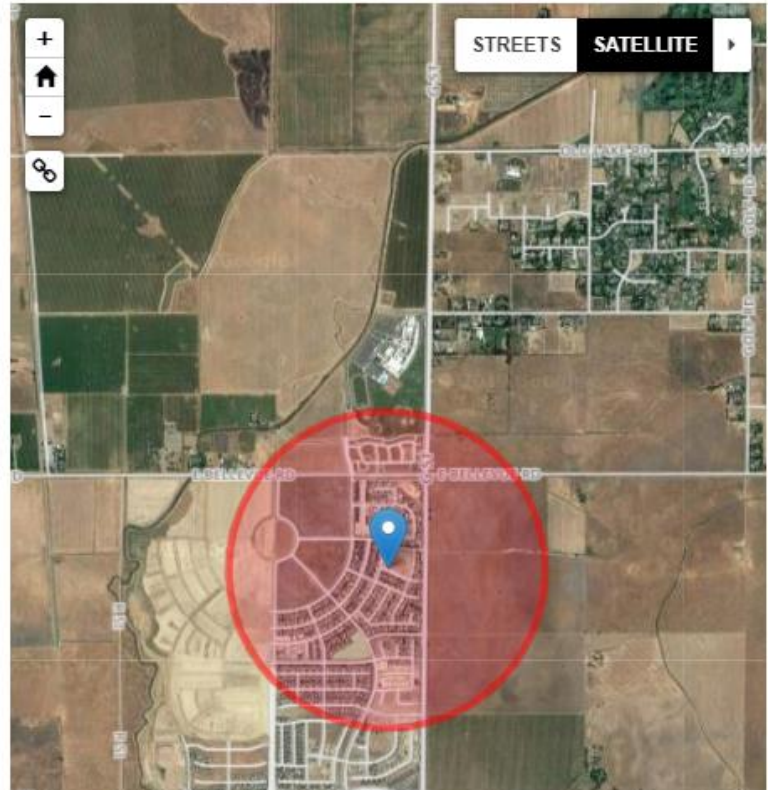
OR enter an address below and click Go!

merced

Go!

Results for Merced (County: Merced)

Latitude, longitude	37.3567864, -120.4708815
Total Population	1,236
Youth Population	272
Senior Population	28
Median Household Income	\$71,963
Per Capita Income	\$28,031
People in Poverty	168
Households without Access to a Car	1
Parks total area	3.56 acres
Parks per 1000 people	2.88 acres



Potential Project Site #3

Fahren's Creek Trail- Meets Criteria #1

Parks per 1,000: 0.00 acres

Results for Merced (County: Merced)

Latitude, longitude	37.3482920, -120.4834986	
Total Population	1,006	2
Youth Population	266	2
Senior Population	24	2
Median Household Income	\$69,680	2
Per Capita Income	\$25,999	2
People in Poverty	140	2
Households without Access to a Car	1	2
Parks total area	0.00 acres	2
Parks per 1000 people	0.00 acres	2

