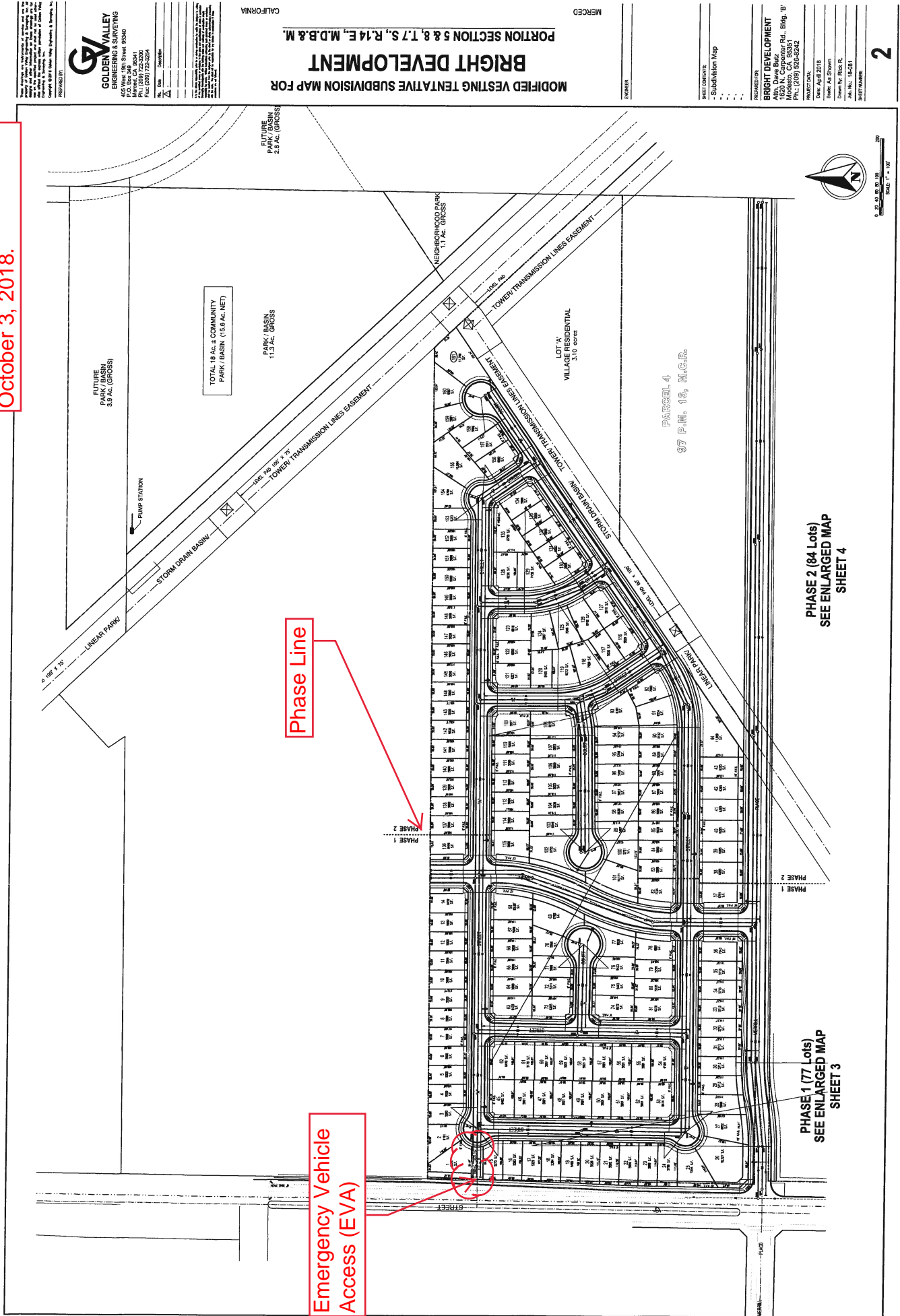


Modified Map Approved by
the Planning Commission
October 3, 2018.



Modified Map Approved by
the Planning Commission
October 3, 2018.

GOLDEN VALLEY
ENGINEERING & SURVEYING
105 West Live Street, Suite 100
Merced, CA 95341
Phone: (209) 722-8264
Fax: (209) 722-8264

PROJECT NO.: 18-031
SHEET NO.: 3

CALIFORNIA

**MODIFIED VESTING TENTATIVE SUBDIVISION MAP FOR
BRIGHT DEVELOPMENT
PORTION SECTION 5 & 8, T.7 S., R.14 E., M.D.B. & M.**

MERCED

1/4 SECTION

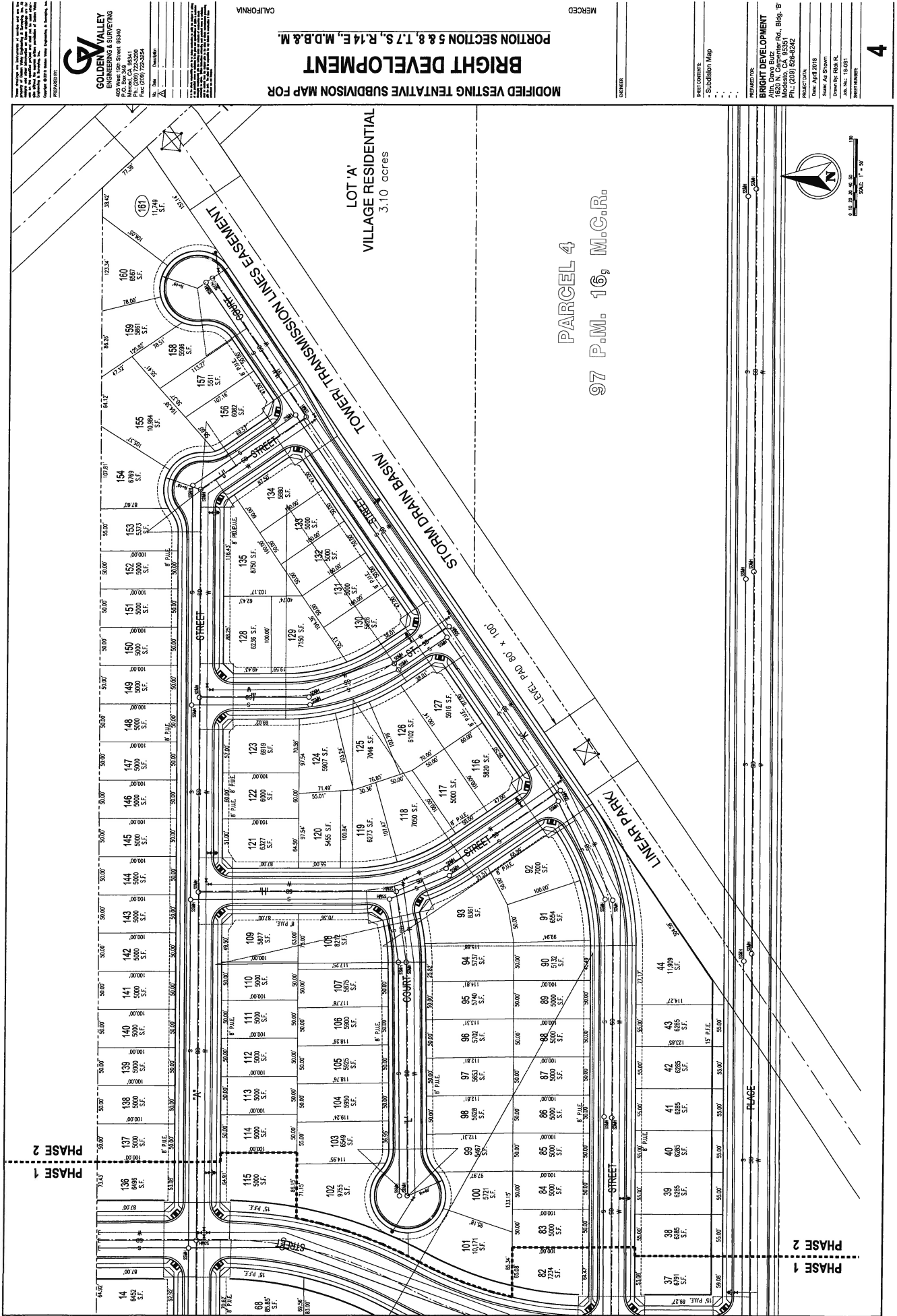
SUBDIVISION MAP

BRIGHT DEVELOPMENT
Atty. Drew Buz
1850 N. Carpenter Rd., Bldg. B
Merced, CA 95341
PH: (209) 624-0242

PROJECT DATA:
Date: April 2018
Scale: As Shown
Drawn By: Rick R.
Job No.: 18-031
SHEET NUMBER:



Modified Map Approved by
the Planning Commission
October 3, 2018.



Modified Map Approved by
the Planning Commission
October 3, 2018.

GOLDEN VALLEY
ENGINEERING & SURVEYING
100 West 1st Street, Suite 100
Merced, CA 95341
Phone: (209) 723-3254
Fax: (209) 723-3254

PROJECT:
BRIGHT DEVELOPMENT
PORTION SECTION 5 & 8, T.7 S., R.14 E., M.D.B. & M.

DATE: 08/06/2018

BY: [Signature]

CHECKED BY: [Signature]

APPROVED BY: [Signature]

CALIFORNIA

**MODIFIED VESTING TENTATIVE SUBDIVISION MAP FOR
BRIGHT DEVELOPMENT
PORTION SECTION 5 & 8, T.7 S., R.14 E., M.D.B. & M.**

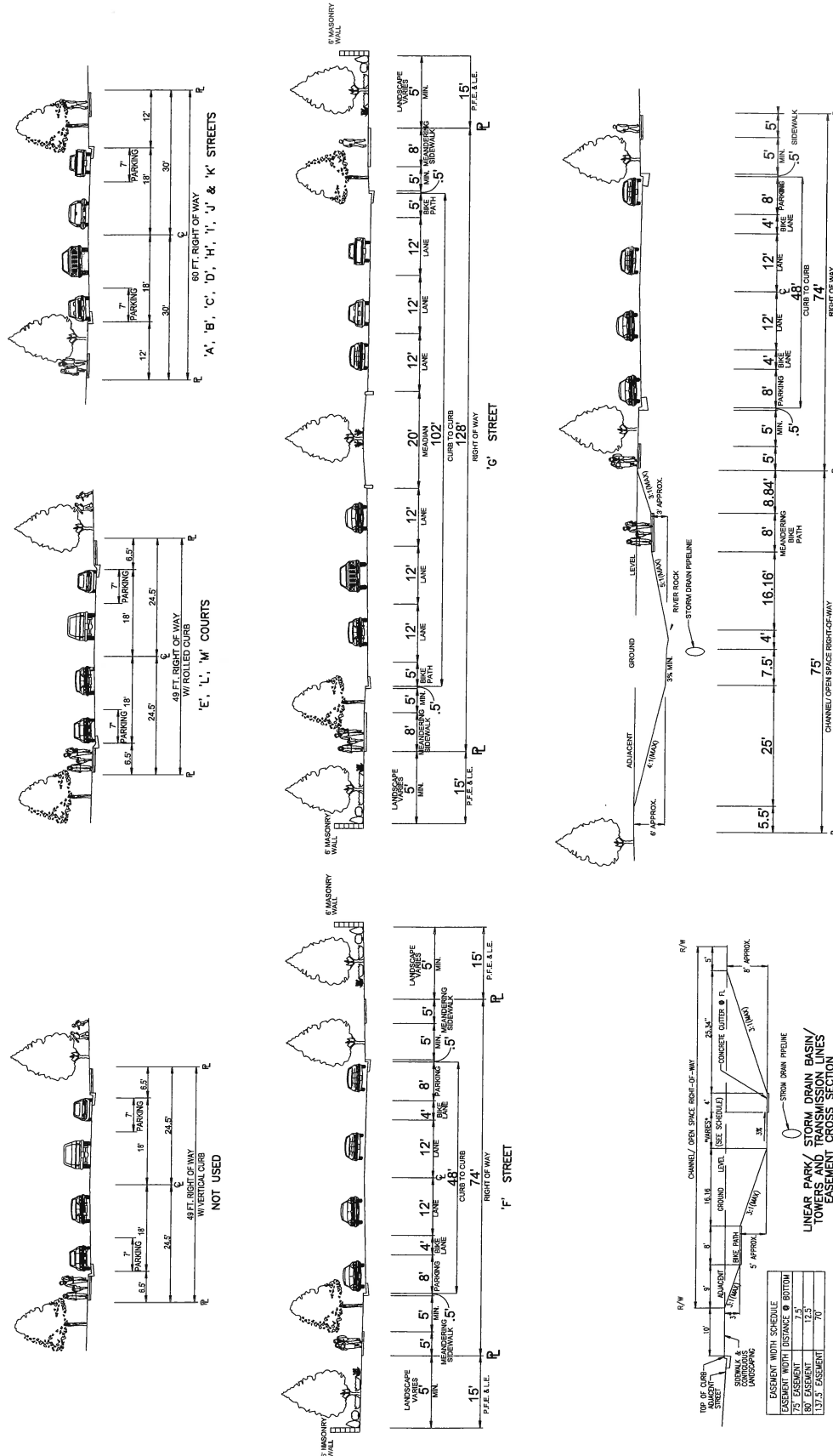
MERCED

TOWERS:

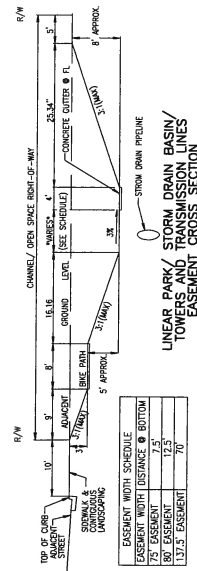
SHEET CONTAINS:

BRIGHT DEVELOPMENT
100 West 1st Street, Suite 100
Merced, CA 95341
Phone: (209) 723-3254

PROJECT:
BRIGHT DEVELOPMENT
100 West 1st Street, Suite 100
Merced, CA 95341
Phone: (209) 723-3254



SECTION 'A-A'
75' WIDE LINEAR PARK/ STORM DRAIN BASIN/
TOWERS AND TRANSMISSION LINES
ADJACENT TO A 74' R.O.W.
CROSS SECTION



Modified Map Approved by
the Planning Commission
October 3, 2018.



GOLDEN VALLEY
ENGINEERING & SURVEYING
 405 West 10th Street, Suite 100
 Modesto, CA 95351
 Phone: (209) 524-2000
 Fax: (209) 524-2004
 www.gveng.com

I am a duly Licensed Professional Engineer in the State of California, License No. 44567, and I am duly Licensed Professional Surveyor in the State of California, License No. 10000. I am the author of this map and I warrant that the information contained herein is true and correct to the best of my knowledge and belief.

I, the undersigned, being duly sworn, depose and say that the foregoing is true and correct to the best of my knowledge and belief.

Executed on this 1st day of October, 2018.

Signature: _____
 Name: _____
 Title: _____

CALIFORNIA

PORTION SECTION 5 & 8, T.7 S., R.14 E., M.D.B. & M.

MODIFIED VESTING TENTATIVE SUBDIVISION MAP FOR
BRIGHT DEVELOPMENT

MERCED

SHEET NO. _____
 OF _____

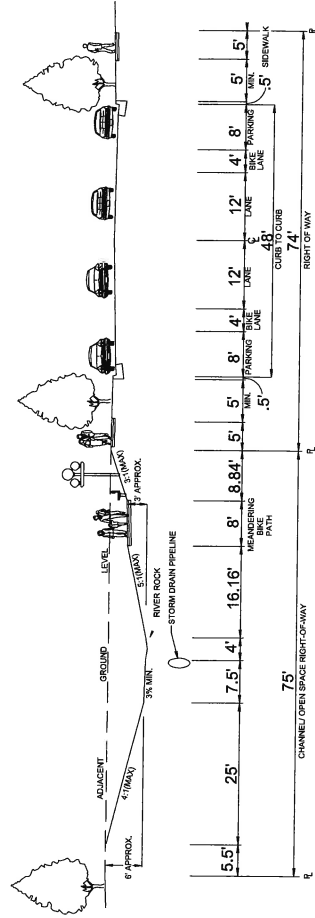
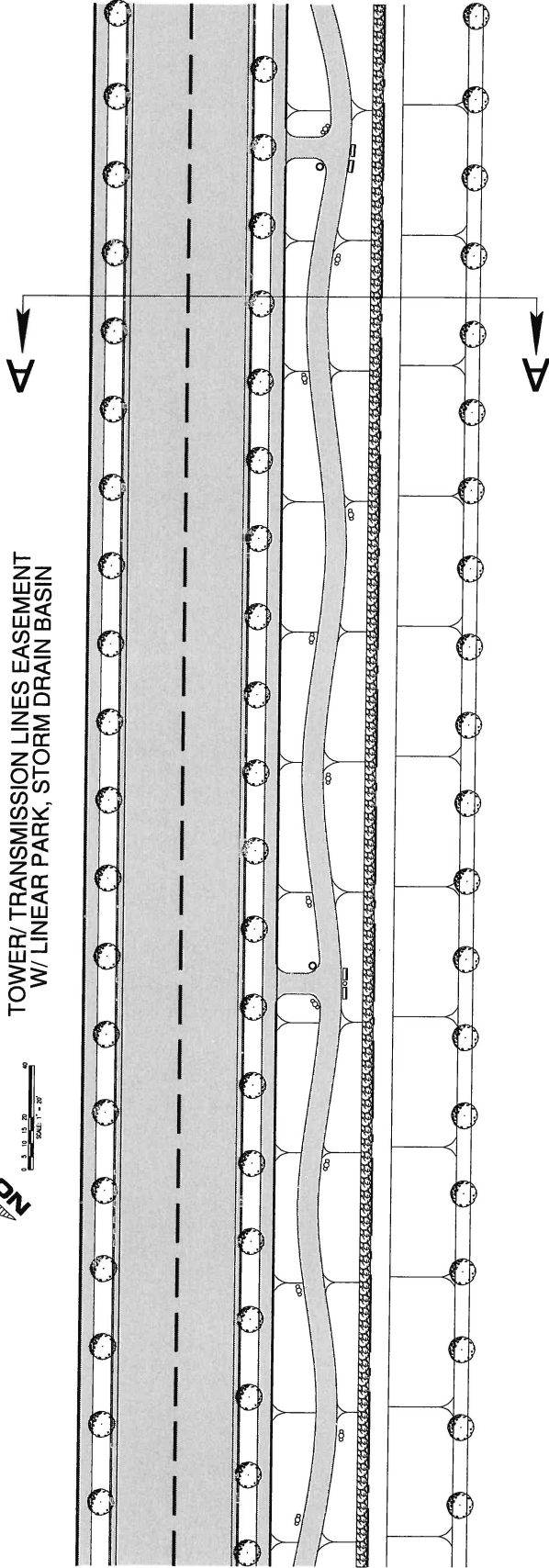
SHEET CONTAINS:
 - Transmission Line Easement
 - Park Basin

PROJECT NO.: _____
 PROJECT NAME: _____
 DATE: _____
 DRAWN BY: _____
 CHECKED BY: _____
 APP. NO.: _____
 SHEET NUMBER: _____

6



TOWER/TRANSMISSION LINES EASEMENT
 W/ LINEAR PARK, STORM DRAIN BASIN



SECTION 'A-A'
 75' WIDE LINEAR PARK/ STORM DRAIN BASIN/
 TOWERS AND TRANSMISSION LINES
 ADJACENT TO A 74' R.O.W.

CROSS SECTION

SCALE: 1"=10'