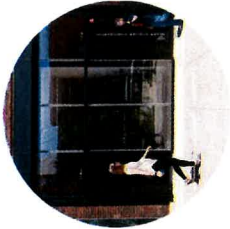




ATTACHMENT 6 - P-01



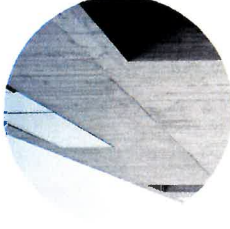
1 EQUITONE CEMENT PANEL OR EQV



2 COMMERCIAL STOREFRONT



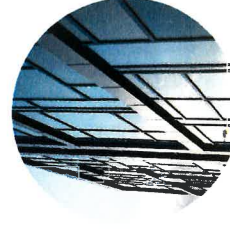
3 RESIDENTIAL WINDOWS



4 BOARD FORM CONCRETE

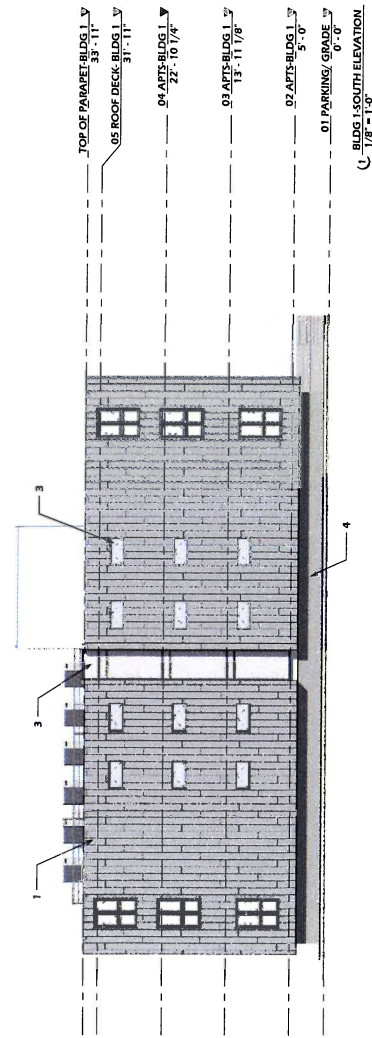
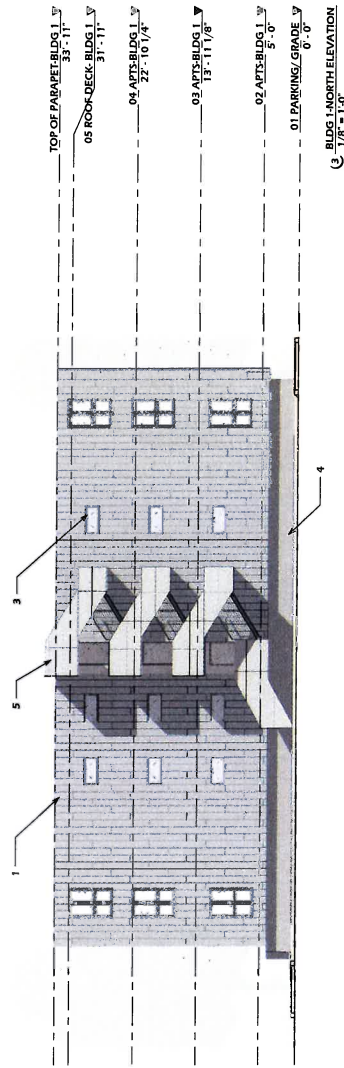


5 METAL PANEL DAILING



6 BRAKE METAL STOREFRONT

ATTACHMENT 6 - Page 2





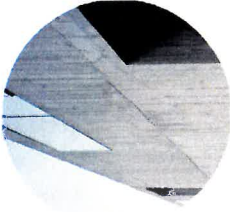
1 EQUITONE CEMENT PANEL OR EOV



2 COMMERCIAL STOREFRONT



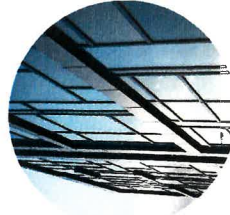
3 RESIDENTIAL WINDOWS



4 BOARD FORM CONCRETE

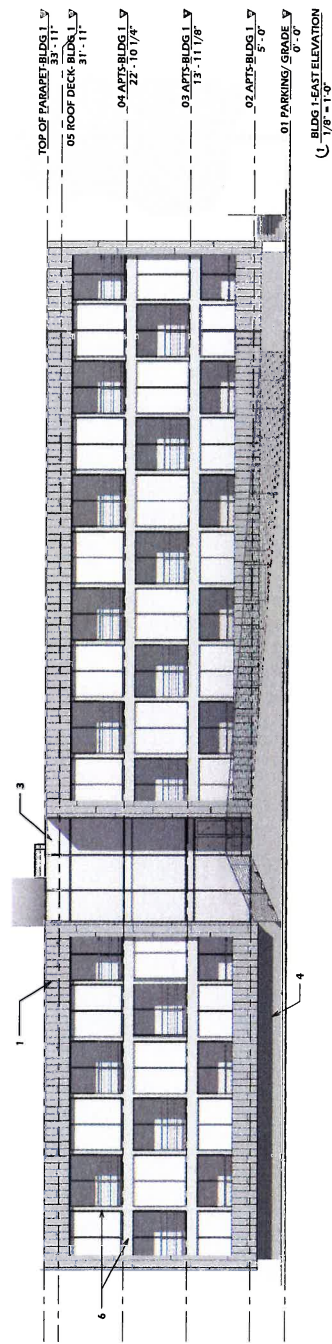
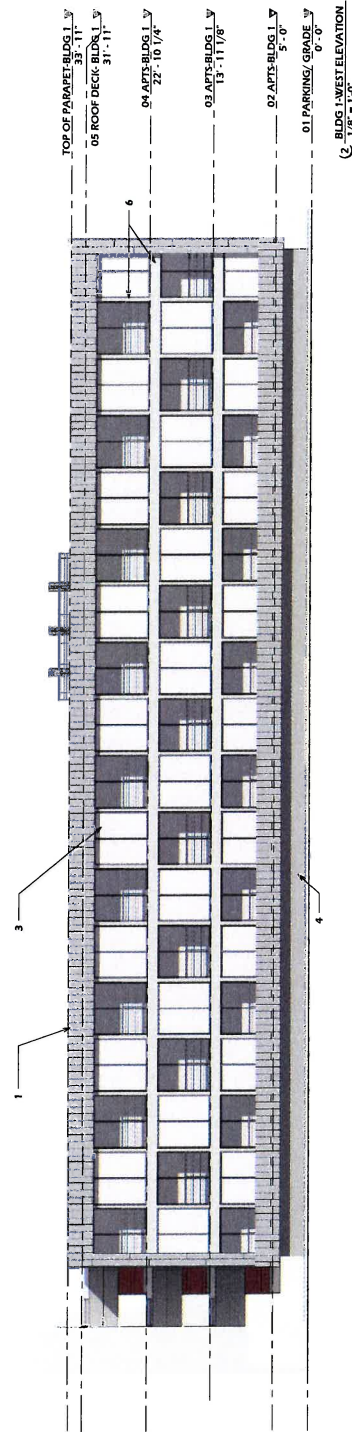


5 METAL PANEL RAILING



6 BRASS METAL STOREFRONT

ATTACHMENT 6 - Page 3





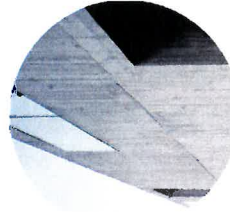
1 EQUITONE CEMENT PANEL OR EOV



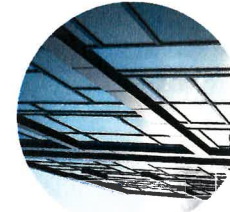
2 COMMERCIAL STOREFRONT



3 RESIDENTIAL WINDOWS



4 BOARD FORM CONCRETE



6 BRASS METAL STOREFRONT



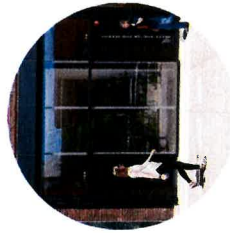
BLDG 2 NORTH ELEVATION
1/8" = 1'-0"



BLDG 2 SOUTH ELEVATION
1/8" = 1'-0"



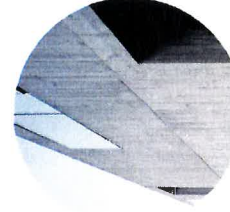
1 EQUITONE CEMENT PANEL OR EOV



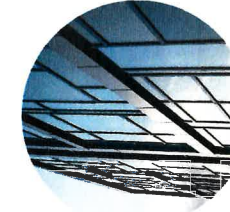
2 COMMERCIAL STOREFRONT



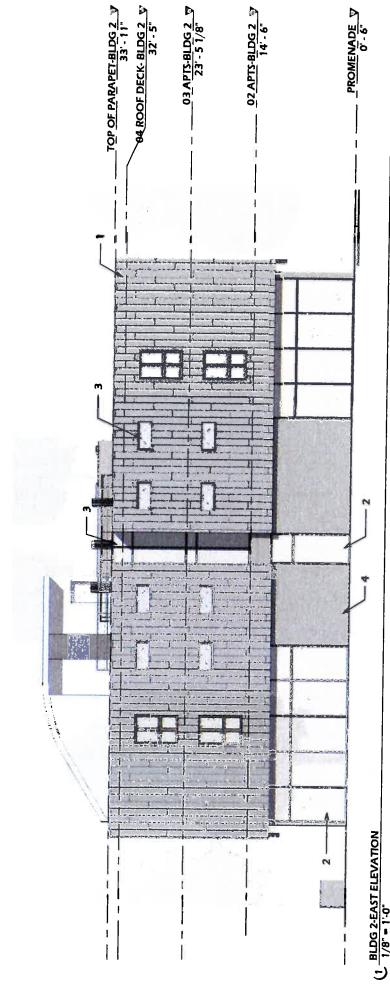
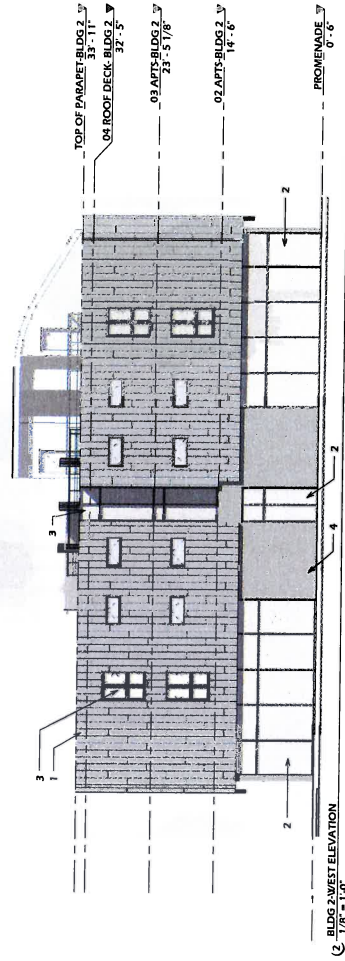
3 RESIDENTIAL WINDOWS



4 BOARD FORM CONCRETE

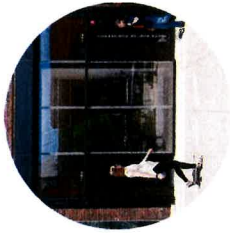


6 BRAKE METAL STOREFRONT





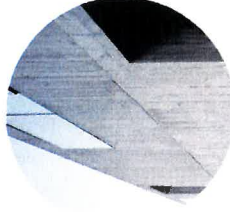
1 EQUITONE CEMENT PANEL OR EOV



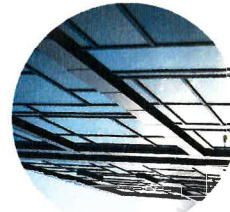
2 COMMERCIAL STOREFRONT



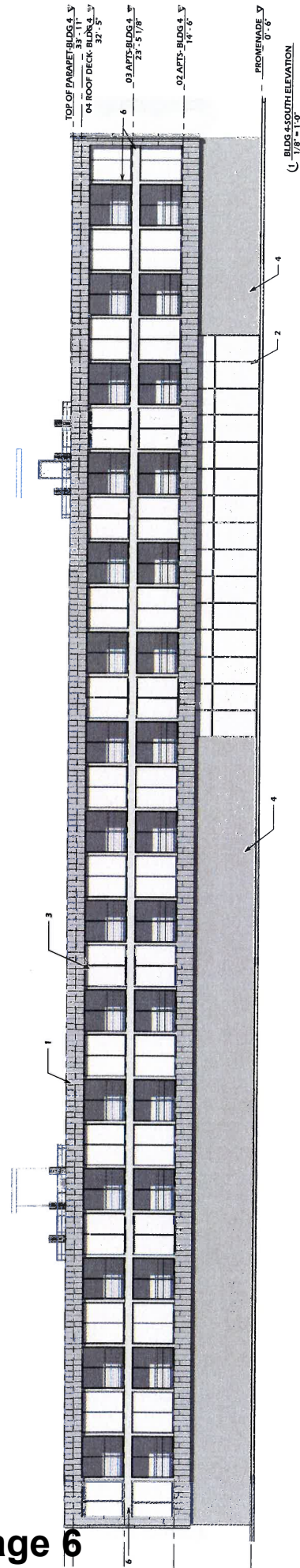
3 RESIDENTIAL WINDOWS



4 BOARD FORM CONCRETE



6 BRAKE METAL STOREFRONT





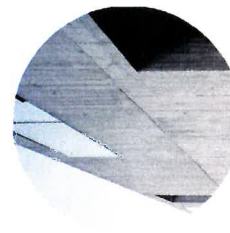
1 EQUITONE CEMENT PANEL OR EQV



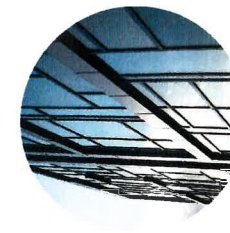
2 COMMERCIAL STOREFRONT



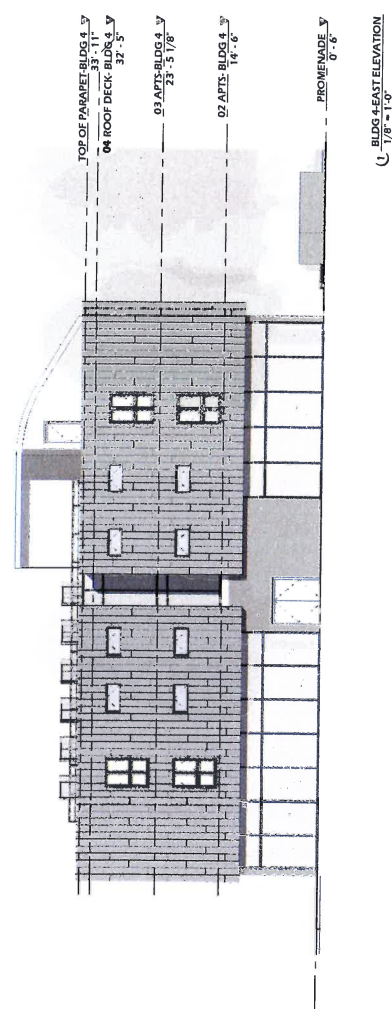
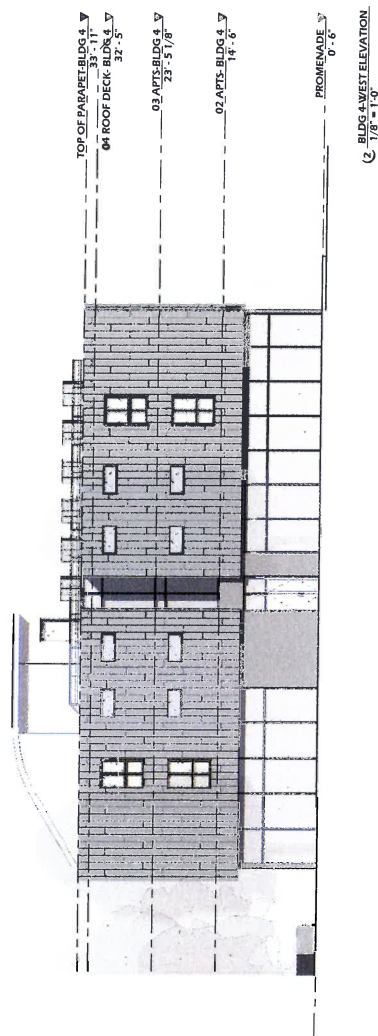
3 RESIDENTIAL WINDOWS

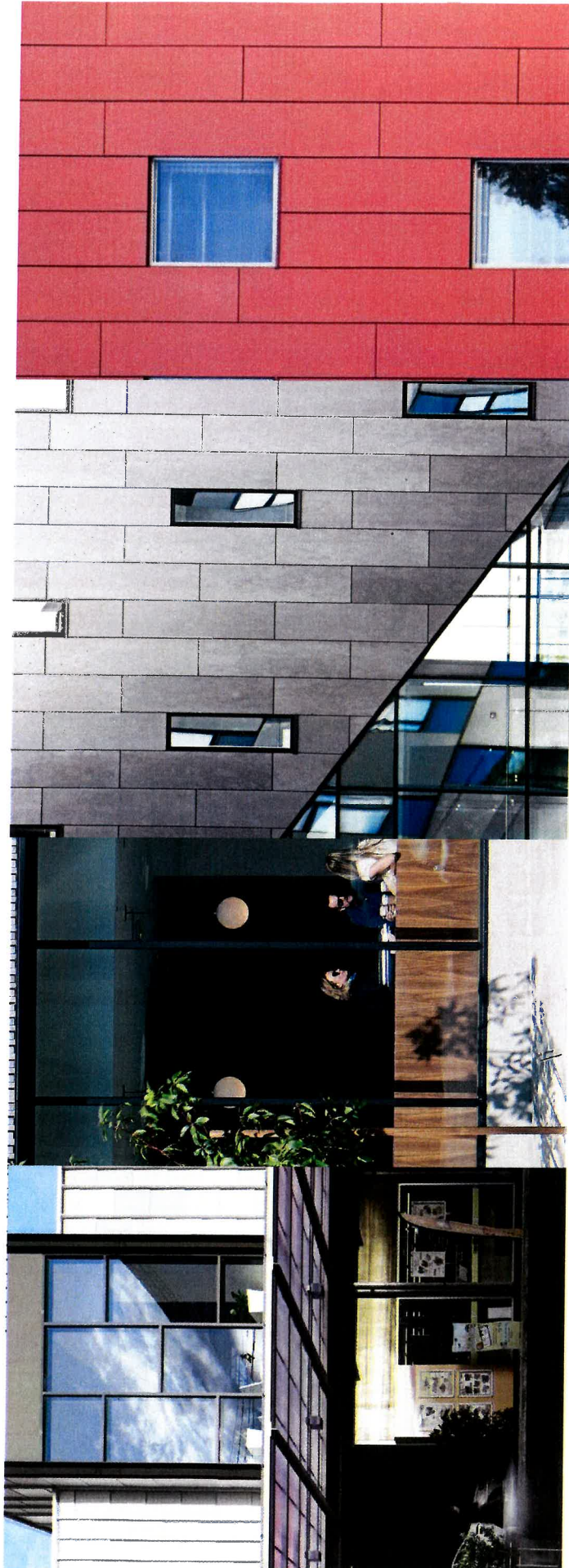


4 BOARD FORM CONCRETE



6 BRAKE METAL STOREFRONT





ATTACHMENT 6 - Page 8