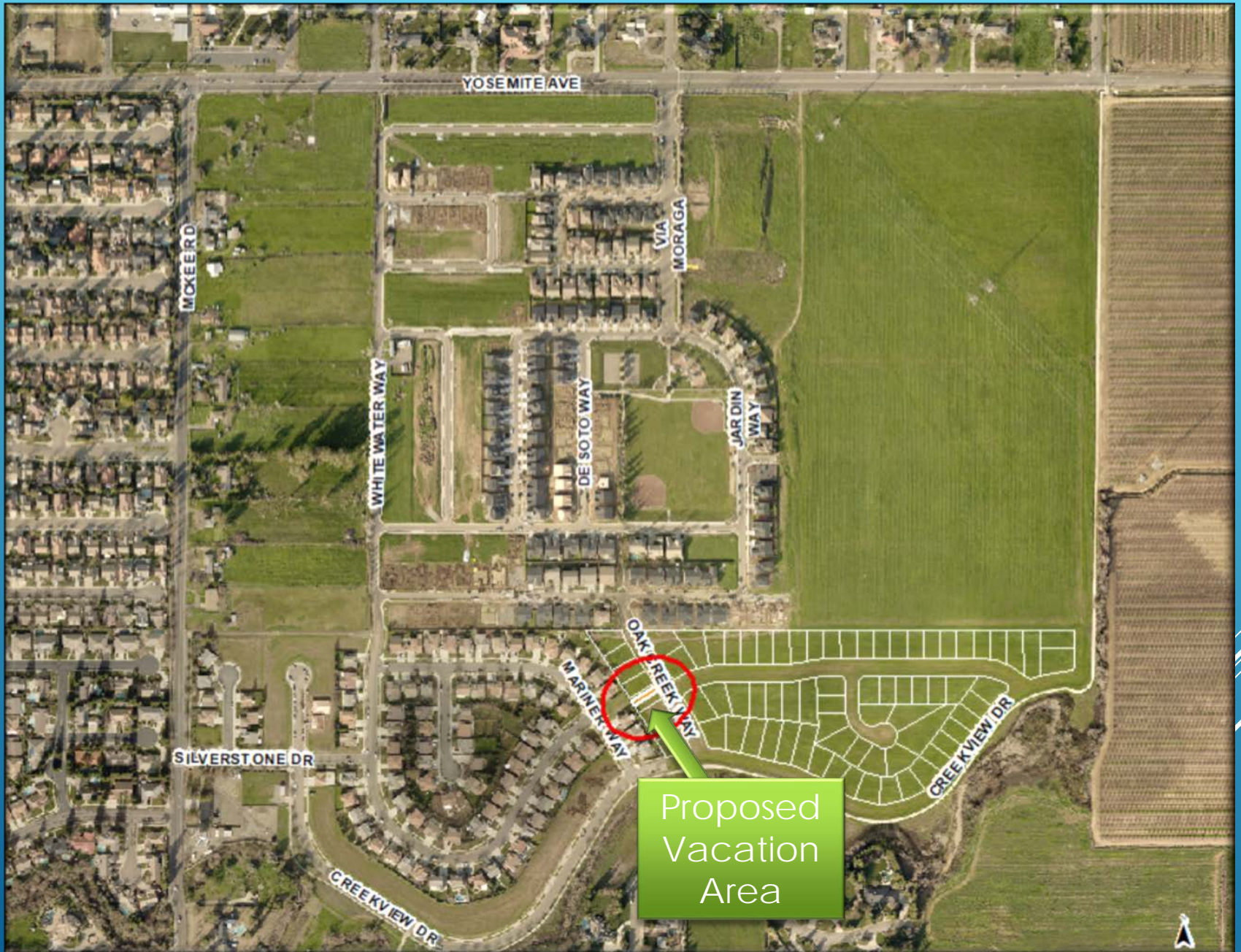


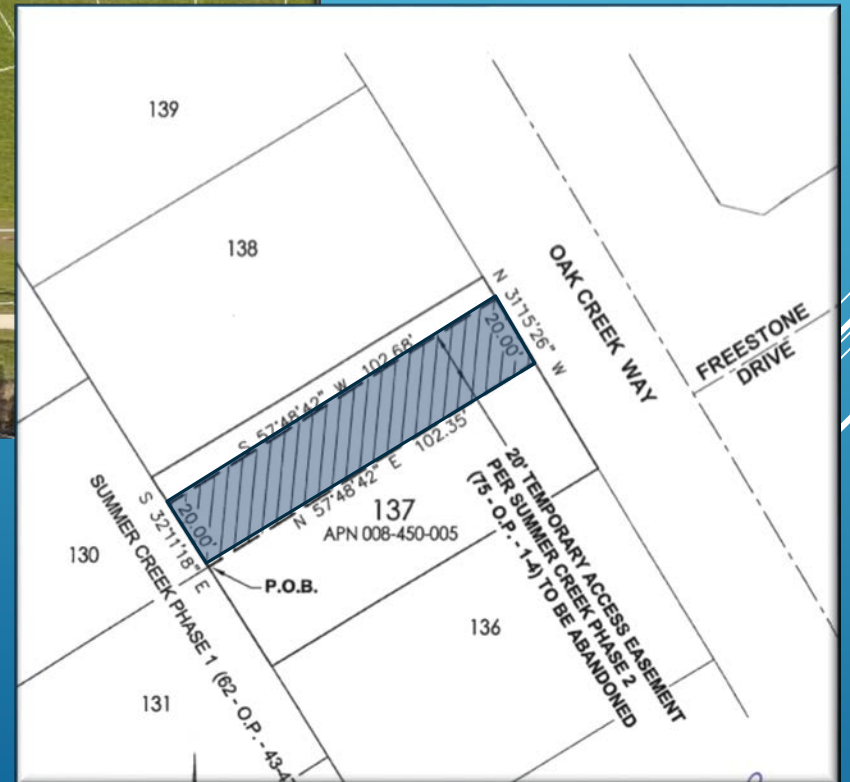
Vacation #19-02

Vacate Temporary Emergency
Vehicle Access Easement

Summer Creek Phase 2

Lot 137





- ▶ Temporary Emergency Vehicle Access (EVA) Easement required by Tentative Subdivision Map Conditions of Approval.
- ▶ Once the street network was constructed, the EVA was no longer needed.
- ▶ The Fire Department confirmed the access is not needed.
- ▶ Developer unable to build on the lot.
- ▶ Lot is 60 feet wide, 20-foot EVA only allows a 40-foot width for development.

The EVA on Lot 130 (adjacent to Lot 137) was previously vacated.



Planning Commission Action

- ▶ On June 5, 2019, the Planning Commission found that the proposed vacation is consistent with the General Plan.

City Council Action

- ▶ Open Public Hearing
- ▶ Approve, Deny, or Continue Vacation #19-02