

PROPERTY DESCRIPTION
 A PORTION OF LOT 96 AND A PORTION OF THE WEST 40 FEET OF
 THE SOUTHWEST CORNER OF THE SOUTHERN PACIFIC RAILROAD-OKDALE
 BRANCH RIGHT-OF-WAY, AS SHOWN ON THE
 MAP ENTITLED, MAP OF THE CROWNED COUNTY, RECORDED IN
 VOLUME 5 OF OFFICIAL PLATS, PAGE 6, MERCED COUNTY RECORDS

APPLICANT
 58 PETROLEUM, LLC
 CONTACT: SURINA MANN
 1700 MERCED PARK BLVD., SUITE G
 MERCED, CALIFORNIA 95361
 PHONE: (209) 446-8806

PROVIDED BY:
 CITY
 CITY
 CITY

SITE UTILITIES:
 SEWAGE DISPOSAL:
 WATER SUPPLY:
 DRAINAGE:

LOT DATA
 A.P.N.: 57-200-067 & 57-200-029
 TOTAL ACRES: 341.075 SF (7.83 AC)
 EXISTING PARCELS: 2
 PROPOSED PARCELS: 4
 EXISTING ZONE: INDUSTRIAL (COUNTY)
 PROPOSED ZONE: C-T DISTRICT
 COMMERCIAL (CITY)
 EXISTING USE: VACANT
 PROPOSED USE: RETAIL AMPM CONVENIENCE STORE
 WITH FUEL SALES, AND CAR WASH

PARCEL BLDG. SQ. FT.
 1 126
 2 488
 3 673
 4 1,201
TOTAL 43,383

ACREAGE
 1 1.26
 2 4.88
 3 6.73
 4 1.20
TOTAL 7.57

PARCEL 1 PARKING DATA
 REQUIRED: 19 SPACES
 PROVIDED: 19 SPACES

PROVIDED:
 STANDARD SPACE (9'x20')
 ACCESSIBLE SPACE (9'x20')
 SPACES AT FUEL PUMPS
 PROVIDED: 47 SPACES

PARCEL 2 PARKING DATA
 REQUIRED: 108 SPACES
 PROVIDED: 135 SPACES

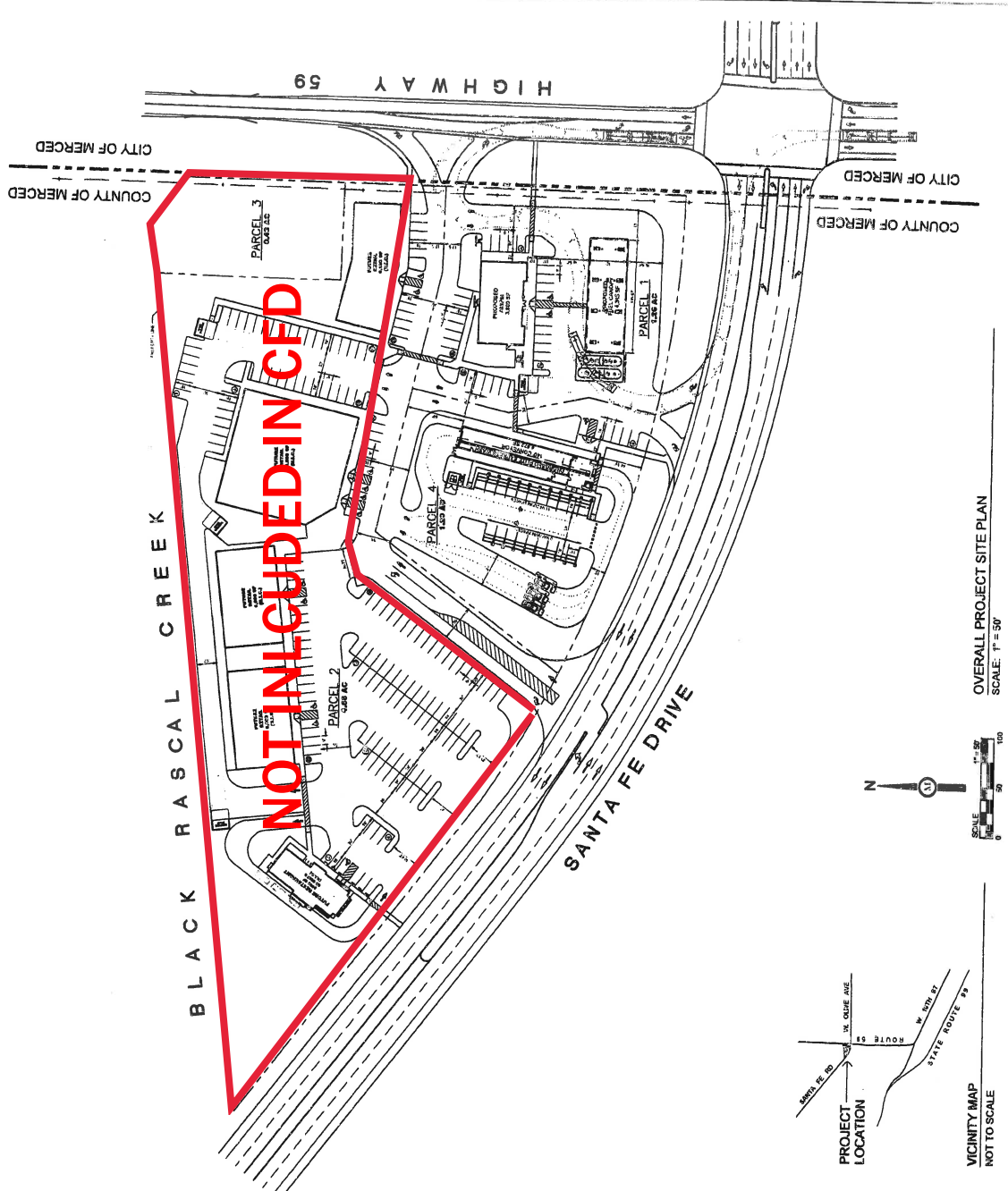
PROVIDED:
 STANDARD SPACE (9'x20')
 ACCESSIBLE SPACE (9'x20')
 PROVIDED: 173 SPACES

PARCEL 4 PARKING DATA
 REQUIRED: 2 SPACES
 PROVIDED: 2 SPACES

PROVIDED:
 STANDARD SPACE (9'x20')
 ACCESSIBLE SPACE (9'x20')
 PROVIDED: 5 SPACES
 1 SPACES
 6 SPACES

OVERALL SITE PLAN

A1



OVERALL PROJECT SITE PLAN
 SCALE: 1" = 50'