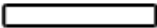


CHILDS AVE PARK
TOP VIEW

ADA ACCESSIBILITY GUIDELINE - ADAAG CONFORMANCE

ELEVATED	ACCESSIBLE	RAMP ACCESSIBLE	GROUND	TYPES
0	0/0	0	0/0	0/0

1306 AGE
APPROPRIATE SIGN



GENERAL NOTES:

This conceptual plan is based on information provided prior to construction. Detailed site information, including the following, should be obtained, evaluated, and utilized in the final project design. Exact site dimensions, topography, existing utilities, soil conditions and drainage solutions.

WARNING: Accessible safety surfacing material is required beneath and around this equipment that has a critical height value (Fall Height) appropriate for the highest accessible part of this equipment. Refer to the CPSC'S Handbook For Public Playground Safety, Section 4: Surfacing.



CHILDS AVE PARK
TOP VIEW

ADA ACCESSIBILITY GUIDELINE - ADAAG CONFORMANCE

ELEVATED	ACCESSIBLE	RAMP ACCESSIBLE	GROUND	TYPES
14	10/7	4	5/0	3/3

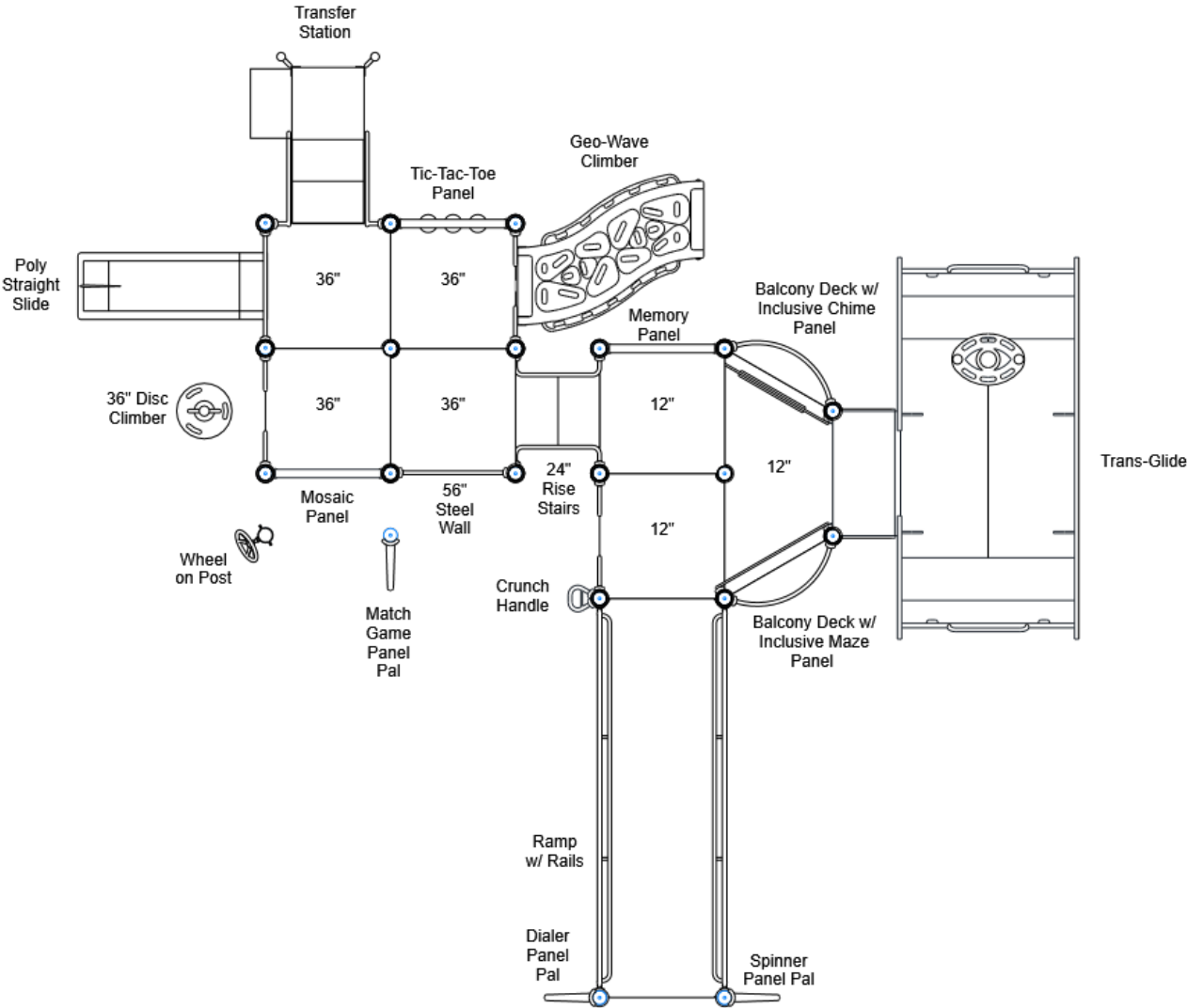
R5

FOR KIDS
AGES
5-12

GENERAL NOTES:

This conceptual plan is based on information provided prior to construction. Detailed site information, including the following, should be obtained, evaluated, and utilized in the final project design. Exact site dimensions, topography, existing utilities, soil conditions and drainage solutions.

WARNING: Accessible safety surfacing material is required beneath and around this equipment that has a critical height value (Fall Height) appropriate for the highest accessible part of this equipment. Refer to the CPSC'S Handbook For Public Playground Safety, Section 4: Surfacing.



STRUCTURE#: R50E3BCDA
PROJECT#: PPT204E30EA-2
DATE: 7/10/2020 | DRAWN BY: Nathaniel

MIN. USE ZONE: 46' x 38'

PLAYCRAFT REP:
Park Planet



CHILDS AVE PARK
TOP VIEW

ADA ACCESSIBILITY GUIDELINE - ADAAG CONFORMANCE

ELEVATED	ACCESSIBLE	RAMP ACCESSIBLE	GROUND	TYPES
14	10/7	4	5/0	3/3

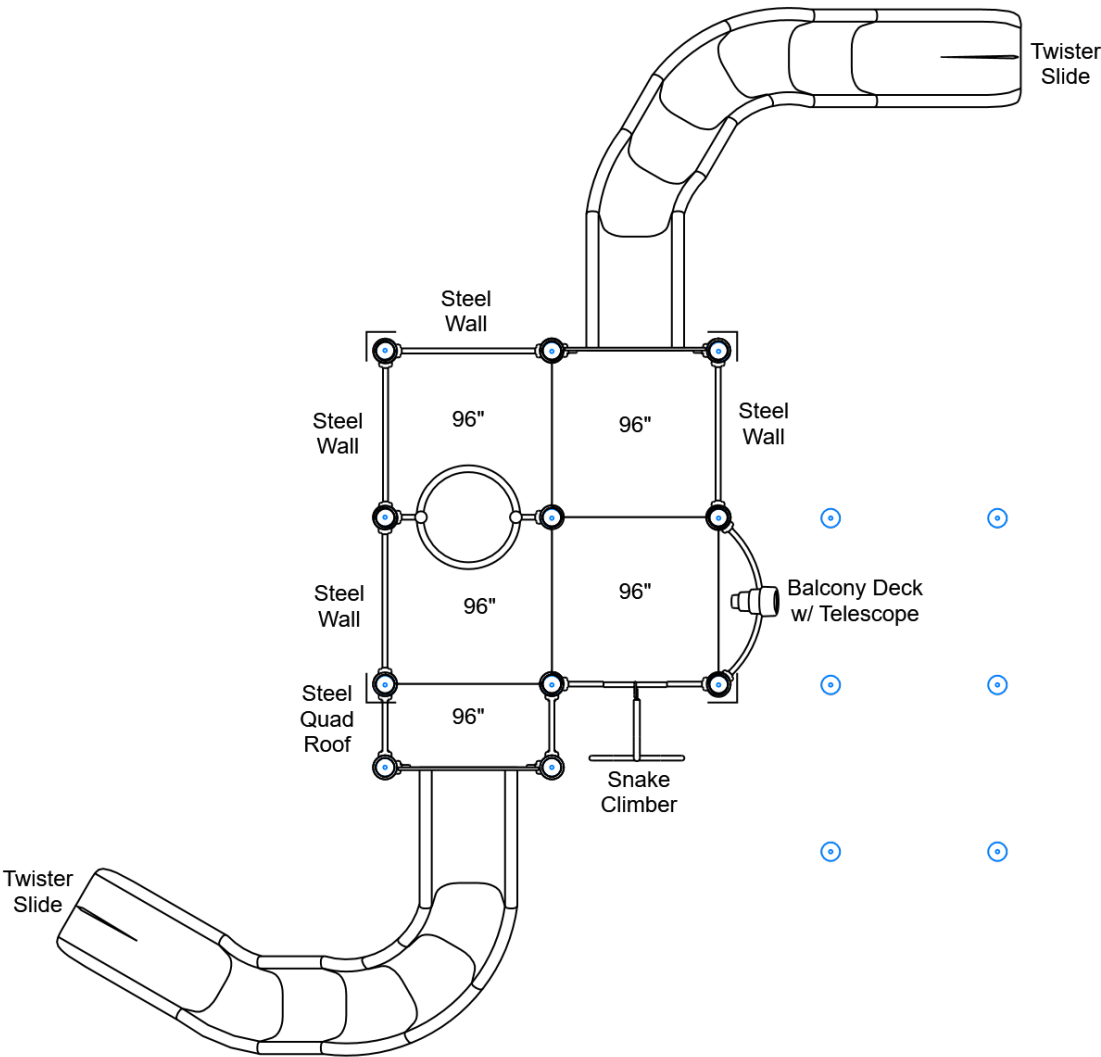
R5

FOR KIDS
AGES
5-12

GENERAL NOTES:

This conceptual plan is based on information provided prior to construction. Detailed site information, including the following, should be obtained, evaluated, and utilized in the final project design. Exact site dimensions, topography, existing utilities, soil conditions and drainage solutions.

WARNING: Accessible safety surfacing material is required beneath and around this equipment that has a critical height value (Fall Height) appropriate for the highest accessible part of this equipment. Refer to the CPSC'S Handbook For Public Playground Safety, Section 4: Surfacing.



STRUCTURE#: R50E3BCDA
PROJECT#: PPT204E30EA-2
DATE: 7/10/2020 | DRAWN BY: Nathaniel

MIN. USE ZONE: 46' x 38'

PLAYCRAFT REP:
Park Planet



CHILDS AVE PARK
SITE PLAN

ADA ACCESSIBILITY GUIDELINE - ADAAG CONFORMANCE

ELEVATED	ACCESSIBLE	RAMP ACCESSIBLE	GROUND	TYPES
14	10/7	4	5/0	3/3

R5

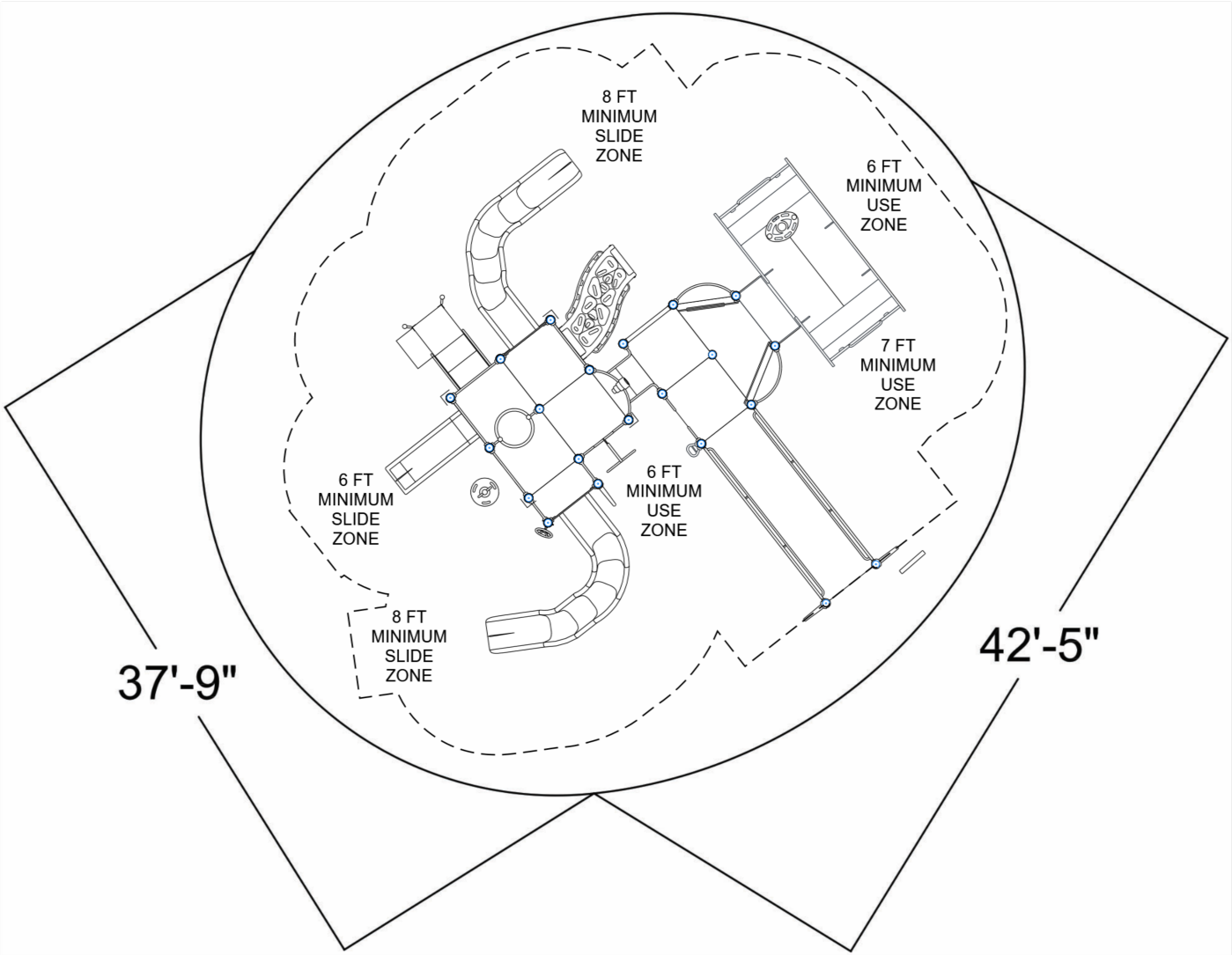
FOR KIDS
AGES
5-12

GENERAL NOTES:

This Preliminary Site Plan is based on measurements that were provided in the initial planning phase. All dimensions must be verified prior to the submission of a purchase order. Playcraft Systems will not be held responsible for any discrepancies between actual dimensions and dimensions submitted in the planning phase.

The Minimum Use Zone for a play structure is based on the product design at the time of proposal. Components and structure designs may be subject to change which may affect dimensions. Therefore, before preparing the site, we strongly recommend obtaining final drawings from the factory (available after the order is placed and included in the Assembly Manual).

WARNING: Accessible safety surfacing material is required beneath and around this equipment that has a critical height value (Fall Height) appropriate for the highest accessible part of this equipment. Refer to the CPSC'S Handbook For Public Playground Safety, Section 4: Surfacing.



CHILDS AVE PARK
SW VIEW



STRUCTURE#: STAPC1306

PROJECT#: PPT204E30EA-2

DATE: 7/10/2020 | DRAWN BY: Nathaniel

CHILDS AVE PARK
SW VIEW

R5

FOR KIDS
AGES
5-12



STRUCTURE#: R50E3BCDA

PROJECT#: PPT204E30EA-2

DATE: 7/10/2020 | DRAWN BY: Nathaniel



CHILDS AVE PARK
NE VIEW

R5

FOR KIDS
AGES
5-12



STRUCTURE#: R50E3BCDA

PROJECT#: PPT204E30EA-2

DATE: 7/10/2020 | DRAWN BY: Nathaniel





Bill of Materials

CHILDS AVE PARK

Project# PPT204E30EA-2

7/10/2020

Item	Description	Quantity
STAPC1306		
A2-1306	1306 Safety Sign (5-12, Roto)	1
R50E3BCDA		
HS-1004-R	Collars	81
GF-7001	Flat Cap, R5	1
GF-7002	Dome Cap, R5	16
S-1005-R5F-9-012-051	Post, 5ft, 12in (51in)	1
S-1007-R5-07ft	Post, 07ft R5	2
S-1008-R5-08ft	Post, 08ft R5	4
S-1009-R5-09ft	Post, 09ft R5	3
S-1015-R5-15ft	Post, 15ft R5	7
S-1018-R5-18ft	Post, 18ft R5	4
S-11011-13011-R5	Half Square Deck w Walls R5	1
S-1101-R5	Square Deck	8
S-1103-R5	Hex Deck, Half (5 Post)	1
S-1109-R5	Balcony Deck	2
S-1109-R5-T	Balcony Deck w/ Telescope	1
S-1206-24R5	ADA Stairs, 24in Rise w/ Walls (Short)	1
S-1208-R-RAIL12	Ramp 144in (Ground w/ Rails, Inc.)	1
S-1209-24-R5	Transfer Station, 36in-R	1
S-1222-8R	Climber, Snake 90-96in	1
S-1233-3-HW	Climber, Disc 30-36in (w/ HW)	1
S-1249-DGH	Climber, Inc. Geo-Wave 30-36in (H, DTG, L)	1
S-12891-DD5R5	Center Access Deck (DTD, 60in)	1
S-1301-60R5	Wall, Steel 55in (60in gap)	1
S-1301-R5	Wall, Steel 36in (Standard)	4



Bill of Materials (continued)

Item	Description	Quantity
S-1304-R5	Single Slide SitDown Wall	1
S-1309-2-R5	Half Walls (Pair) R5	3
S-1310-R5	Transition Wall	1
S-1316-R5	Twister Entry Panel	2
S-1608-R5	Memory Panel	1
S-1616-R5	Tic-Tac-Toe Panel	1
S-1665-R5	Panel Pal, Dialer	1
S-1666-R5	Panel Pal, Spinner	1
S-1668-R5	Panel Pal, Match Game	1
S-1685-R5	Mosaic Panel	1
S-1687-R5	Inclusive Panel, Chime	1
S-1688-R5	Inclusive Panel, Maze	1
S-1701-3	Slide, Single 36in (Straight)	1
S-1710-8-RRRSR	Slide, Twister 96in (R-R-R-S-R)	1
S-1710-8-RSRRS	Slide, Twister 96in (R-S-R-R-S)	1
S-18011-R5	Metal Roof, Quad	1
S-1812-R5	Driver Wheel (Post Mounted)	1
S-1937-R5	Crunch Handle	1
S-1975-R5	Trans-Glide	1
HS-1100-2	Deck to Deck Hardware	12