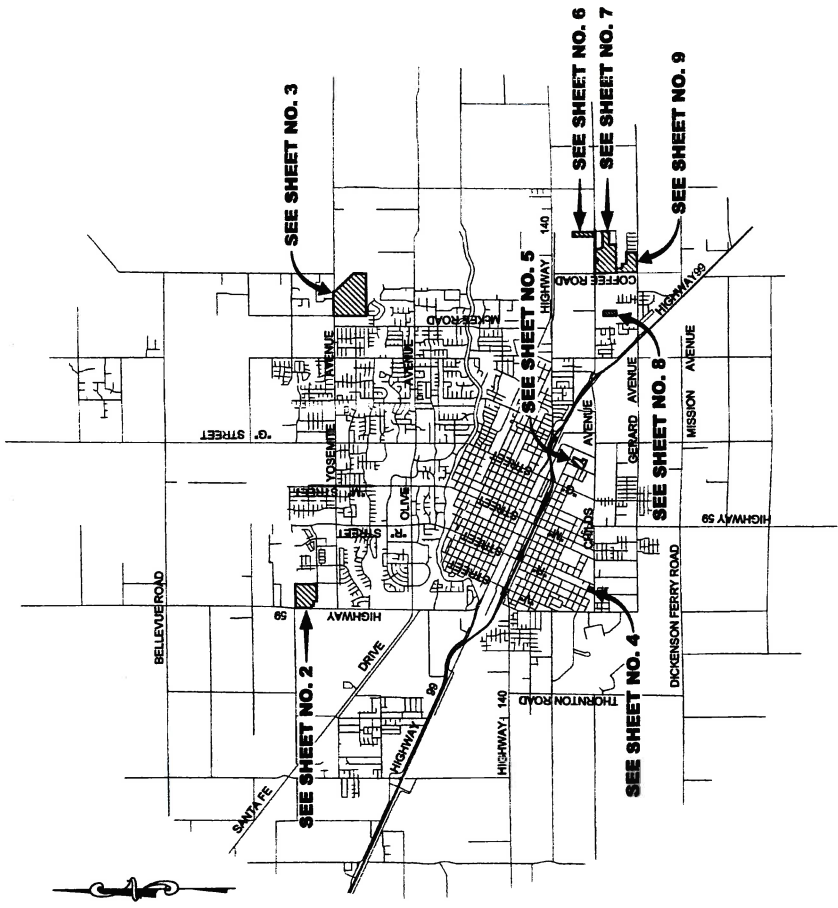


CITY OF MERCED
COUNTY OF MERCED
STATE OF CALIFORNIA

**BOUNDARY MAP AND IMPROVEMENT AREAS
OF CITY OF MERCED COMMUNITY FACILITIES
DISTRICT NO. 2003-2 (SERVICES), ANNEXATION NO. 3**



VICINITY MAP
NOT TO SCALE

FILED IN THE OFFICE OF THE CITY CLERK'S OFFICE THIS 2nd DAY OF MARCH, 2006.

[Signature]
CITY CLERK
CITY OF MERCED

I HEREBY CERTIFY THAT THE WITHIN MAPS SHOWING PROPOSED BOUNDARIES OF CITY OF MERCED COMMUNITY FACILITIES DISTRICT NO. 2003-2 (SERVICES) ANNEXATION NO. 3, IN THE CITY OF MERCED AND THE COUNTY OF MERCED, STATE OF CALIFORNIA, WAS APPROVED BY THE CITY COUNCIL OF THE CITY OF MERCED AT A REGULAR MEETING THEREOF, HELD ON THE 6th DAY OF FEBRUARY, 2006, BY ITS RESOLUTION NO. 2006-11.

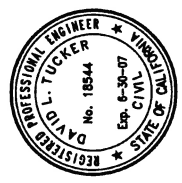
[Signature]
CITY CLERK
CITY OF MERCED

FILED THIS 2nd DAY OF MARCH, 2006, AT THE HOUR OF 2:10 O'CLOCK P.M. IN THE BOOK 11 OF 1 OF 1 OF 1 IN THE COUNTY FACILITIES DISTRICT AT PAGES 2121, IN THE OFFICE OF THE COUNTY RECORDER IN THE COUNTY OF MERCED, STATE OF CALIFORNIA.

M. STEPHEN JONES
MERCED COUNTY RECORDER
DOCUMENT No. 2006-010668

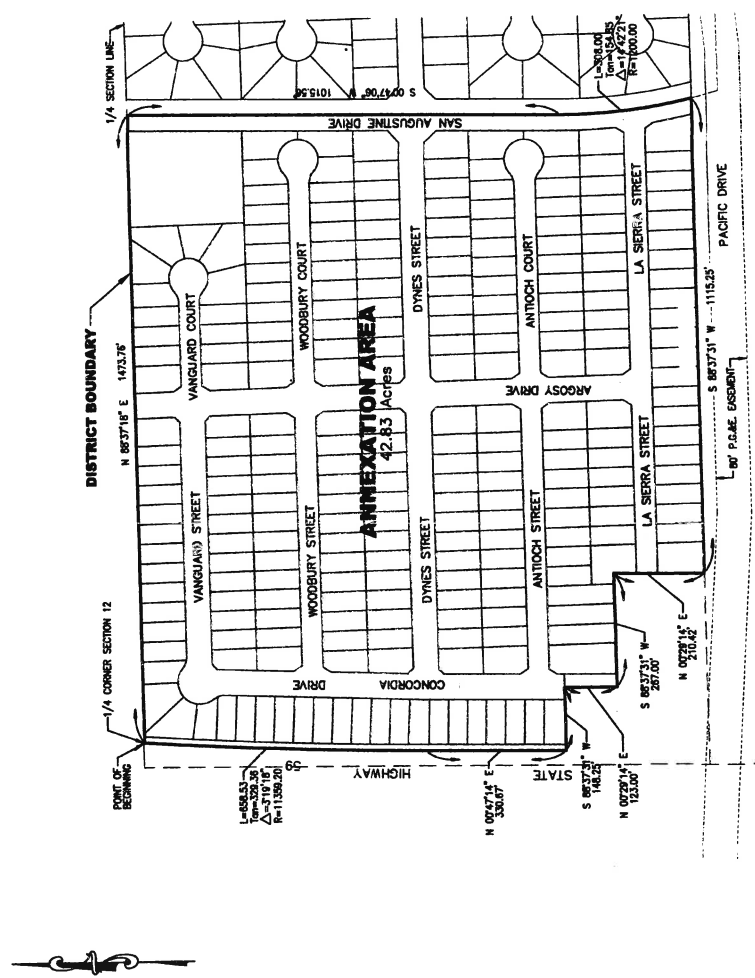
BY: [Signature]
MERCED COUNTY DEPUTY RECORDER

[Signature]
CITY ENGINEER
CITY OF MERCED
R.C.E. #1854



CITY OF MERCED
COUNTY OF MERCED
STATE OF CALIFORNIA

**BOUNDARY MAP AND IMPROVEMENT AREAS
OF CITY OF MERCED COMMUNITY FACILITIES
DISTRICT NO. 2003-2 (SERVICES), ANNEXATION NO. 3**

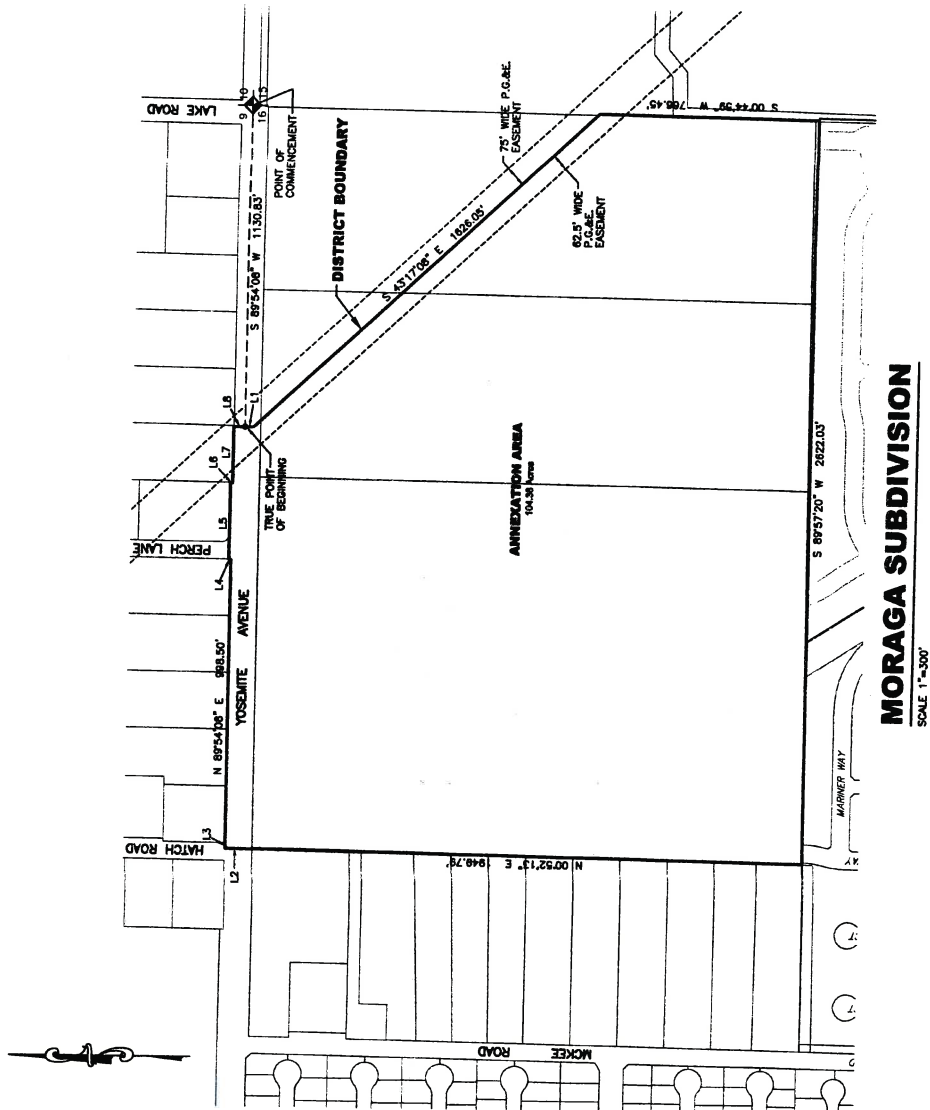


UNIVERSITY PARK II SUBDIVISION

SCALE 1"=200'

CITY OF MERCED
COUNTY OF MERCED
STATE OF CALIFORNIA

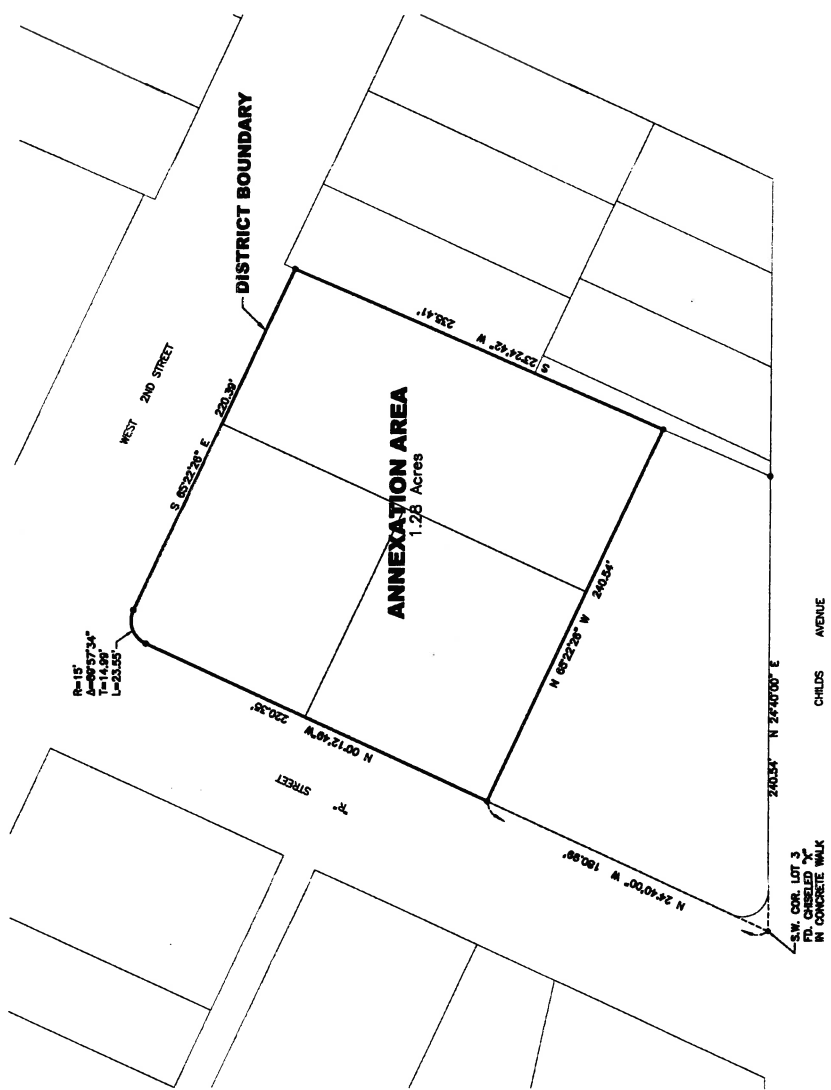
**BOUNDARY MAP AND IMPROVEMENT AREAS
OF CITY OF MERCED COMMUNITY FACILITIES
DISTRICT NO. 2003-2 (SERVICES), ANNEXATION NO. 3**



| LINE TABLE | |
|------------|-----------------------|
| L1 | S 00°05'52" E 30.00' |
| L2 | N 00°52'13" E 70.01' |
| L3 | N 89°54'08" E 19.94' |
| L4 | N 00°44'59" E 7.00' |
| L5 | N 89°54'08" E 289.12' |
| L6 | S 00°44'59" W 7.00' |
| L7 | N 89°54'08" E 188.82' |
| L8 | S 00°05'52" E 40.00' |

CITY OF MERCED
COUNTY OF MERCED
STATE OF CALIFORNIA

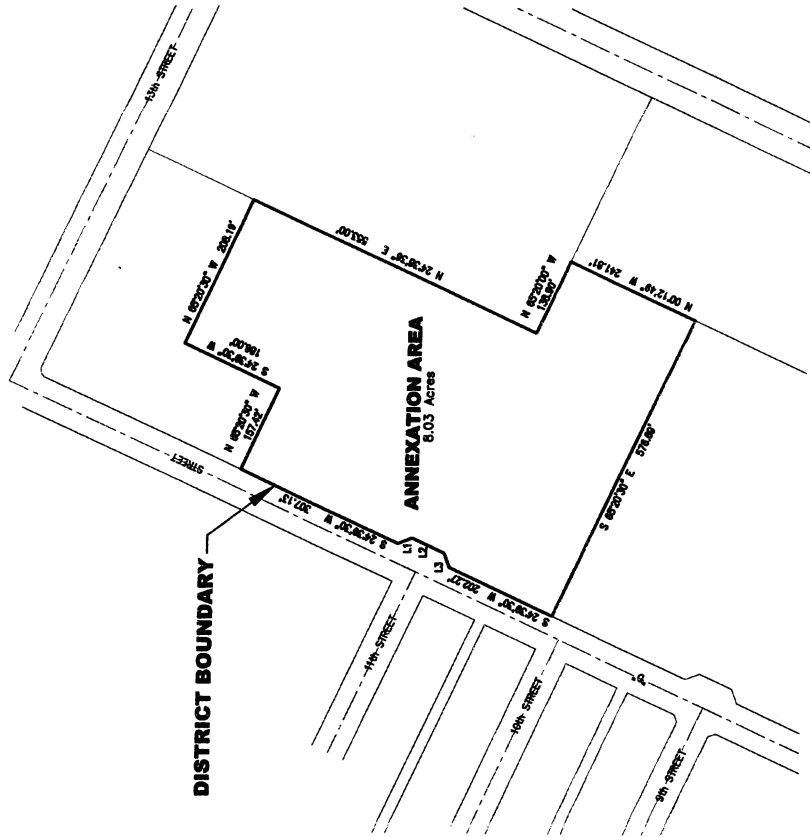
**BOUNDARY MAP AND IMPROVEMENT AREAS
OF CITY OF MERCED COMMUNITY FACILITIES
DISTRICT NO. 2003-2 (SERVICES), ANNEXATION NO. 3**



WEST SIDE DEVELOPMENT
SCALE 1"=50'

CITY OF MERCED
COUNTY OF MERCED
STATE OF CALIFORNIA

**BOUNDARY MAP AND IMPROVEMENT AREAS
OF CITY OF MERCED COMMUNITY FACILITIES
DISTRICT NO. 2003-2 (SERVICES), ANNEXATION NO. 3**

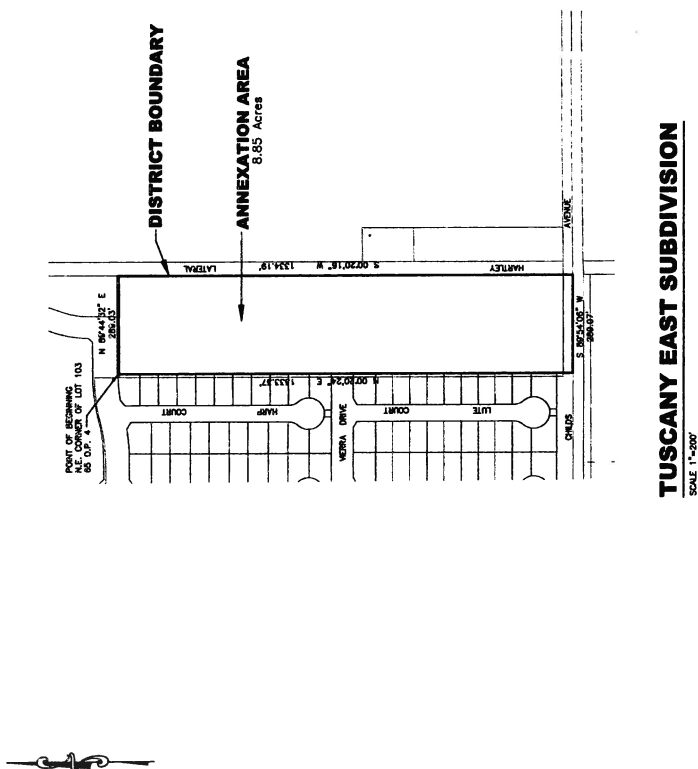


| LINE TABLE | | |
|------------|---------------|--------|
| L1 | S 20°20'30" E | 26.88' |
| L2 | S 24°39'30" W | 61.41' |
| L3 | S 69°39'30" W | 26.88' |

SUNNYVIEW APARTMENTS - PHASE 2
SCALE 1"=150'

**CITY OF MERCED
COUNTY OF MERCED
STATE OF CALIFORNIA**

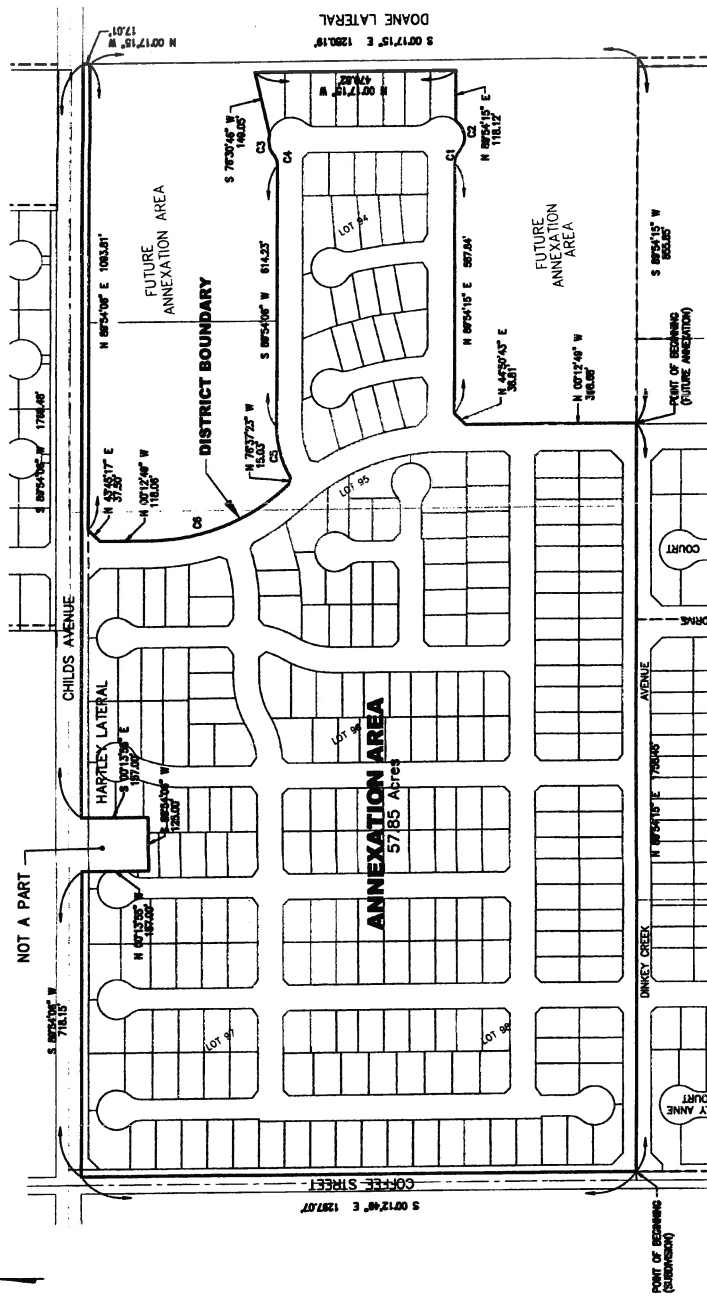
**BOUNDARY MAP AND IMPROVEMENT AREAS
OF CITY OF MERCED COMMUNITY FACILITIES
DISTRICT NO. 2003-2 (SERVICES), ANNEXATION NO. 3**



TUSCANY EAST SUBDIVISION
SCALE 1"=200'

CITY OF MERCED
COUNTY OF MERCED
STATE OF CALIFORNIA

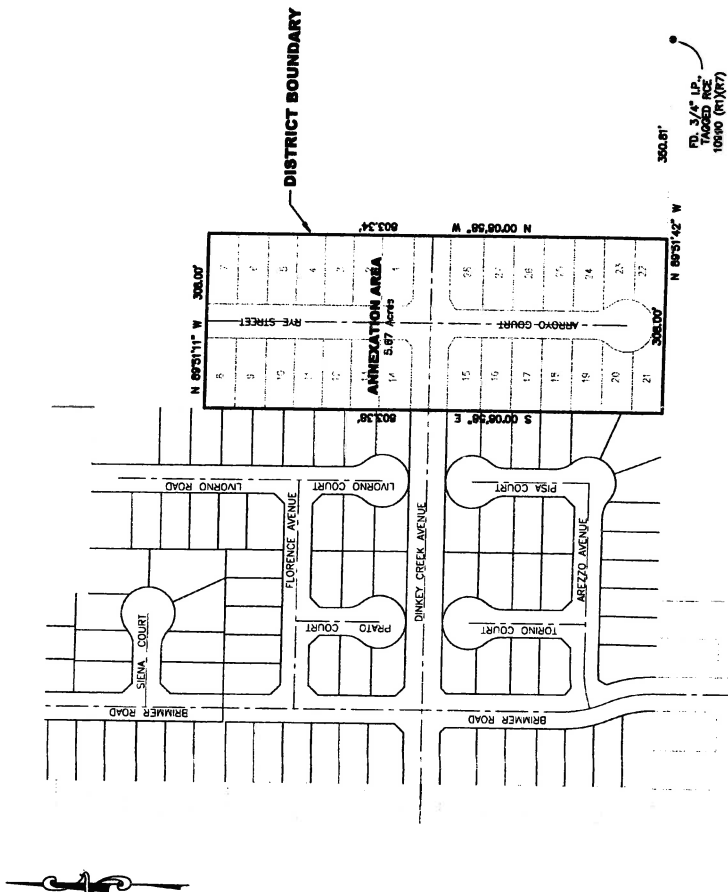
**BOUNDARY MAP AND IMPROVEMENT AREAS
OF CITY OF MERCED COMMUNITY FACILITIES
DISTRICT NO. 2003-2 (SERVICES), ANNEXATION NO. 3**



| CURVE NO. | BEARING | DELTA | CHORD | CHORD |
|-----------|---------------|--------|---------|---------|
| C1 | S 89°54'00" W | 716.15 | 1432.31 | 1432.31 |
| C2 | N 07°15' E | 120.15 | 1432.31 | 1432.31 |
| C3 | S 89°54'00" W | 716.15 | 1432.31 | 1432.31 |
| C4 | N 07°15' E | 120.15 | 1432.31 | 1432.31 |
| C5 | S 89°54'00" W | 716.15 | 1432.31 | 1432.31 |
| C6 | N 07°15' E | 120.15 | 1432.31 | 1432.31 |
| C7 | S 89°54'00" W | 716.15 | 1432.31 | 1432.31 |
| C8 | N 07°15' E | 120.15 | 1432.31 | 1432.31 |
| C9 | S 89°54'00" W | 716.15 | 1432.31 | 1432.31 |
| C10 | N 07°15' E | 120.15 | 1432.31 | 1432.31 |
| C11 | S 89°54'00" W | 716.15 | 1432.31 | 1432.31 |
| C12 | N 07°15' E | 120.15 | 1432.31 | 1432.31 |
| C13 | S 89°54'00" W | 716.15 | 1432.31 | 1432.31 |
| C14 | N 07°15' E | 120.15 | 1432.31 | 1432.31 |
| C15 | S 89°54'00" W | 716.15 | 1432.31 | 1432.31 |
| C16 | N 07°15' E | 120.15 | 1432.31 | 1432.31 |
| C17 | S 89°54'00" W | 716.15 | 1432.31 | 1432.31 |
| C18 | N 07°15' E | 120.15 | 1432.31 | 1432.31 |
| C19 | S 89°54'00" W | 716.15 | 1432.31 | 1432.31 |
| C20 | N 07°15' E | 120.15 | 1432.31 | 1432.31 |
| C21 | S 89°54'00" W | 716.15 | 1432.31 | 1432.31 |
| C22 | N 07°15' E | 120.15 | 1432.31 | 1432.31 |
| C23 | S 89°54'00" W | 716.15 | 1432.31 | 1432.31 |
| C24 | N 07°15' E | 120.15 | 1432.31 | 1432.31 |
| C25 | S 89°54'00" W | 716.15 | 1432.31 | 1432.31 |
| C26 | N 07°15' E | 120.15 | 1432.31 | 1432.31 |
| C27 | S 89°54'00" W | 716.15 | 1432.31 | 1432.31 |
| C28 | N 07°15' E | 120.15 | 1432.31 | 1432.31 |
| C29 | S 89°54'00" W | 716.15 | 1432.31 | 1432.31 |
| C30 | N 07°15' E | 120.15 | 1432.31 | 1432.31 |
| C31 | S 89°54'00" W | 716.15 | 1432.31 | 1432.31 |
| C32 | N 07°15' E | 120.15 | 1432.31 | 1432.31 |
| C33 | S 89°54'00" W | 716.15 | 1432.31 | 1432.31 |
| C34 | N 07°15' E | 120.15 | 1432.31 | 1432.31 |
| C35 | S 89°54'00" W | 716.15 | 1432.31 | 1432.31 |
| C36 | N 07°15' E | 120.15 | 1432.31 | 1432.31 |
| C37 | S 89°54'00" W | 716.15 | 1432.31 | 1432.31 |
| C38 | N 07°15' E | 120.15 | 1432.31 | 1432.31 |
| C39 | S 89°54'00" W | 716.15 | 1432.31 | 1432.31 |
| C40 | N 07°15' E | 120.15 | 1432.31 | 1432.31 |
| C41 | S 89°54'00" W | 716.15 | 1432.31 | 1432.31 |
| C42 | N 07°15' E | 120.15 | 1432.31 | 1432.31 |
| C43 | S 89°54'00" W | 716.15 | 1432.31 | 1432.31 |
| C44 | N 07°15' E | 120.15 | 1432.31 | 1432.31 |
| C45 | S 89°54'00" W | 716.15 | 1432.31 | 1432.31 |
| C46 | N 07°15' E | 120.15 | 1432.31 | 1432.31 |
| C47 | S 89°54'00" W | 716.15 | 1432.31 | 1432.31 |
| C48 | N 07°15' E | 120.15 | 1432.31 | 1432.31 |
| C49 | S 89°54'00" W | 716.15 | 1432.31 | 1432.31 |
| C50 | N 07°15' E | 120.15 | 1432.31 | 1432.31 |
| C51 | S 89°54'00" W | 716.15 | 1432.31 | 1432.31 |
| C52 | N 07°15' E | 120.15 | 1432.31 | 1432.31 |
| C53 | S 89°54'00" W | 716.15 | 1432.31 | 1432.31 |
| C54 | N 07°15' E | 120.15 | 1432.31 | 1432.31 |
| C55 | S 89°54'00" W | 716.15 | 1432.31 | 1432.31 |
| C56 | N 07°15' E | 120.15 | 1432.31 | 1432.31 |
| C57 | S 89°54'00" W | 716.15 | 1432.31 | 1432.31 |
| C58 | N 07°15' E | 120.15 | 1432.31 | 1432.31 |
| C59 | S 89°54'00" W | 716.15 | 1432.31 | 1432.31 |
| C60 | N 07°15' E | 120.15 | 1432.31 | 1432.31 |
| C61 | S 89°54'00" W | 716.15 | 1432.31 | 1432.31 |
| C62 | N 07°15' E | 120.15 | 1432.31 | 1432.31 |
| C63 | S 89°54'00" W | 716.15 | 1432.31 | 1432.31 |
| C64 | N 07°15' E | 120.15 | 1432.31 | 1432.31 |
| C65 | S 89°54'00" W | 716.15 | 1432.31 | 1432.31 |
| C66 | N 07°15' E | 120.15 | 1432.31 | 1432.31 |
| C67 | S 89°54'00" W | 716.15 | 1432.31 | 1432.31 |
| C68 | N 07°15' E | 120.15 | 1432.31 | 1432.31 |
| C69 | S 89°54'00" W | 716.15 | 1432.31 | 1432.31 |
| C70 | N 07°15' E | 120.15 | 1432.31 | 1432.31 |
| C71 | S 89°54'00" W | 716.15 | 1432.31 | 1432.31 |
| C72 | N 07°15' E | 120.15 | 1432.31 | 1432.31 |
| C73 | S 89°54'00" W | 716.15 | 1432.31 | 1432.31 |
| C74 | N 07°15' E | 120.15 | 1432.31 | 1432.31 |
| C75 | S 89°54'00" W | 716.15 | 1432.31 | 1432.31 |
| C76 | N 07°15' E | 120.15 | 1432.31 | 1432.31 |
| C77 | S 89°54'00" W | 716.15 | 1432.31 | 1432.31 |
| C78 | N 07°15' E | 120.15 | 1432.31 | 1432.31 |
| C79 | S 89°54'00" W | 716.15 | 1432.31 | 1432.31 |
| C80 | N 07°15' E | 120.15 | 1432.31 | 1432.31 |
| C81 | S 89°54'00" W | 716.15 | 1432.31 | 1432.31 |
| C82 | N 07°15' E | 120.15 | 1432.31 | 1432.31 |
| C83 | S 89°54'00" W | 716.15 | 1432.31 | 1432.31 |
| C84 | N 07°15' E | 120.15 | 1432.31 | 1432.31 |
| C85 | S 89°54'00" W | 716.15 | 1432.31 | 1432.31 |
| C86 | N 07°15' E | 120.15 | 1432.31 | 1432.31 |
| C87 | S 89°54'00" W | 716.15 | 1432.31 | 1432.31 |
| C88 | N 07°15' E | 120.15 | 1432.31 | 1432.31 |
| C89 | S 89°54'00" W | 716.15 | 1432.31 | 1432.31 |
| C90 | N 07°15' E | 120.15 | 1432.31 | 1432.31 |
| C91 | S 89°54'00" W | 716.15 | 1432.31 | 1432.31 |
| C92 | N 07°15' E | 120.15 | 1432.31 | 1432.31 |
| C93 | S 89°54'00" W | 716.15 | 1432.31 | 1432.31 |
| C94 | N 07°15' E | 120.15 | 1432.31 | 1432.31 |
| C95 | S 89°54'00" W | 716.15 | 1432.31 | 1432.31 |
| C96 | N 07°15' E | 120.15 | 1432.31 | 1432.31 |
| C97 | S 89°54'00" W | 716.15 | 1432.31 | 1432.31 |
| C98 | N 07°15' E | 120.15 | 1432.31 | 1432.31 |
| C99 | S 89°54'00" W | 716.15 | 1432.31 | 1432.31 |
| C100 | N 07°15' E | 120.15 | 1432.31 | 1432.31 |

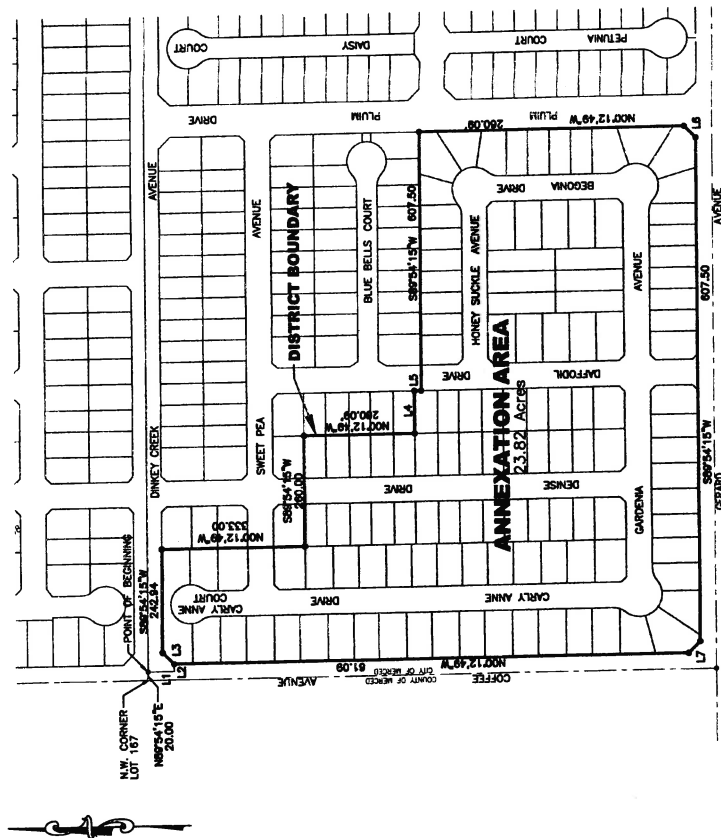
CITY OF MERCED
COUNTY OF MERCED
STATE OF CALIFORNIA

BOUNDARY MAP AND IMPROVEMENT AREAS OF CITY OF MERCED COMMUNITY FACILITIES DISTRICT NO. 2003-2 (SERVICES), ANNEXATION NO. 3



HARTLEY CROSSINGS SUBDIVISION
SCALE 1"=100'

**BOUNDARY MAP AND IMPROVEMENT AREAS
OF CITY OF MERCED COMMUNITY FACILITIES
DISTRICT NO. 2003-2 (SERVICES), ANNEXATION NO. 3**



| LINE TABLE | | |
|------------|---------------|---------|
| L1 | S 00°12'49" E | 61.08' |
| L2 | N 89°47'11" E | 17.00' |
| L3 | N 44°50'43" E | 38.22' |
| L4 | N 89°54'25" E | 100.00' |
| L5 | S 00°12'49" E | 15.91' |
| L6 | N 44°50'48" E | 38.22' |
| L7 | N 45°09'12" W | 38.14' |

SANDCASTLE SUBDIVISION - PHASE III

SCALE 1"=200'