





DATE	REVISION

© COPYRIGHT 2020  
Vernettefort Architects, Inc.  
8525 North Cedar Avenue  
Suite 106  
Fresno, California 93720  
Office: 559.432.6744  
Email: rcv@vfallterno.com

Exterior elevations are shown for the proposed building. All dimensions are in feet and inches. All materials and finishes are subject to change without notice. All materials and finishes are subject to change without notice. All materials and finishes are subject to change without notice.

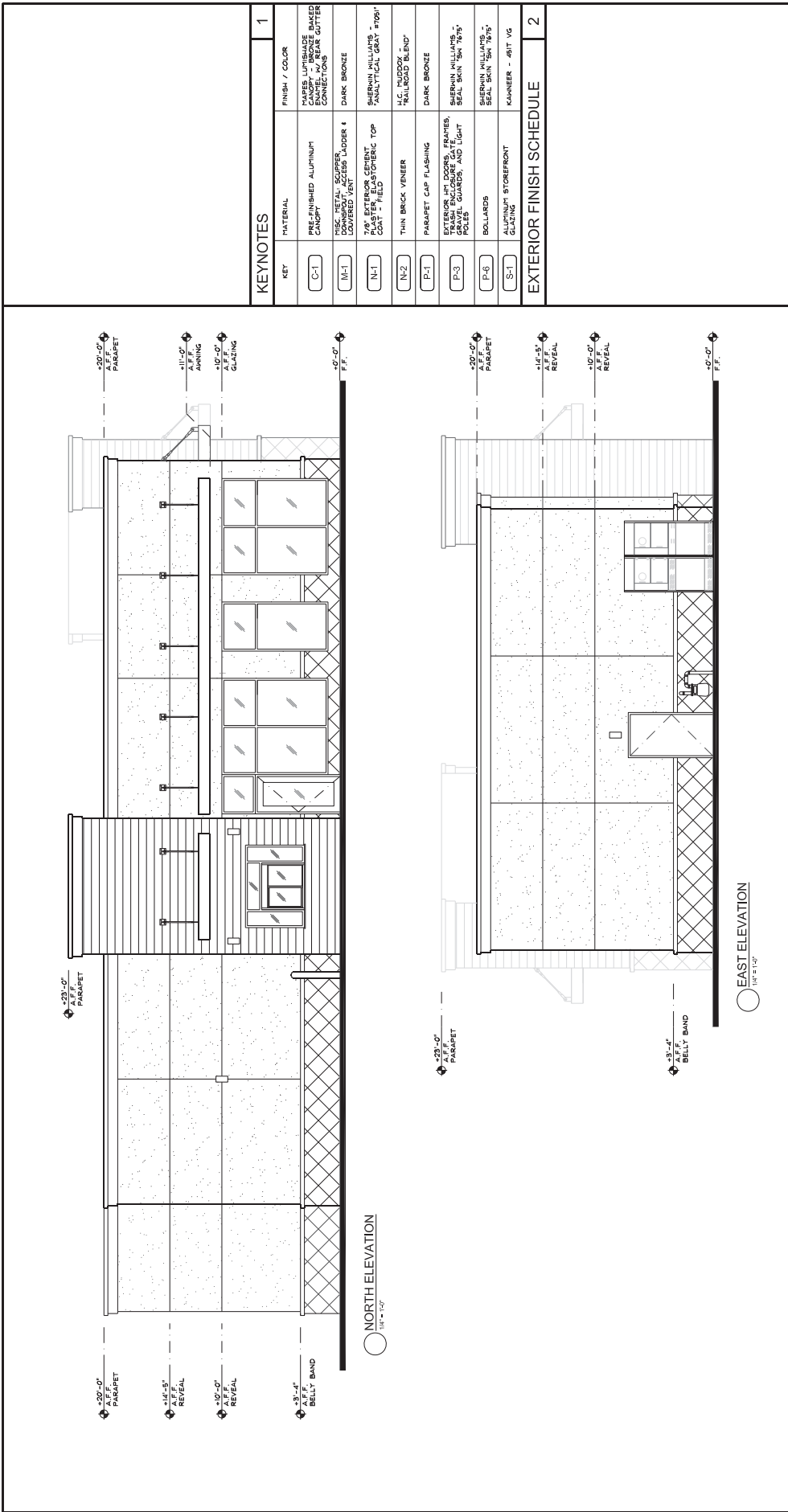


**SITE DEVELOPMENT**  
**MINI-MART / DRIVE-THRU / RETAIL**  
N.E.C. OF HIGHWAY 59 & OLIVE AVE., MERCED, CA  
EXTERIOR ELEVATIONS (DRIVE-THRU)

DATE: 10-19-20
PROJECT NO: 20003 &
DRAWN BY: NL
SHEET: A305

KEYNOTES		
KEY	MATERIAL	FINISH / COLOR
C-1	PRE-FINISHED ALUMINUM CANOPY	PAVES LUMBER, BAKED ENAMEL, NO BEAR GUTTER CONNECTIONS
M-1	1/2" METAL SLIPPER DOWNSTUD VERTICAL	DARK BRONZE
N-1	1/2" BRICK CRANT PLASTER, ELASTIC TOP COAT - FIELD	SHERWIN WILLIAMS ANTI-CRACK GRAY "409"
N-2	THIN BRICK VENEER	"H.C. MUDDOX - "RAILROAD BLEND"
P-1	PARAPET CAP FLASHING	DARK BRONZE
P-3	EXTERIOR DOOR FRAMES, BRASS GUARDS, AND LIGHT FIXTURES	SHERWIN WILLIAMS "SEAL SKIN" 50A "79"
P-6	BOLLARDS	SHERWIN WILLIAMS "SEAL SKIN" 50A "79"
S-1	ALUMINUM STOREFRONT GLazing	KAMMER - 4817 VG

EXTERIOR FINISH SCHEDULE



EXTERIOR ELEVATIONS (DRIVE-THRU)		SCALE: 1/4"=1'-0"		7		3	
20		16		12		8	
4		4		4		4	

DATE	REVISION

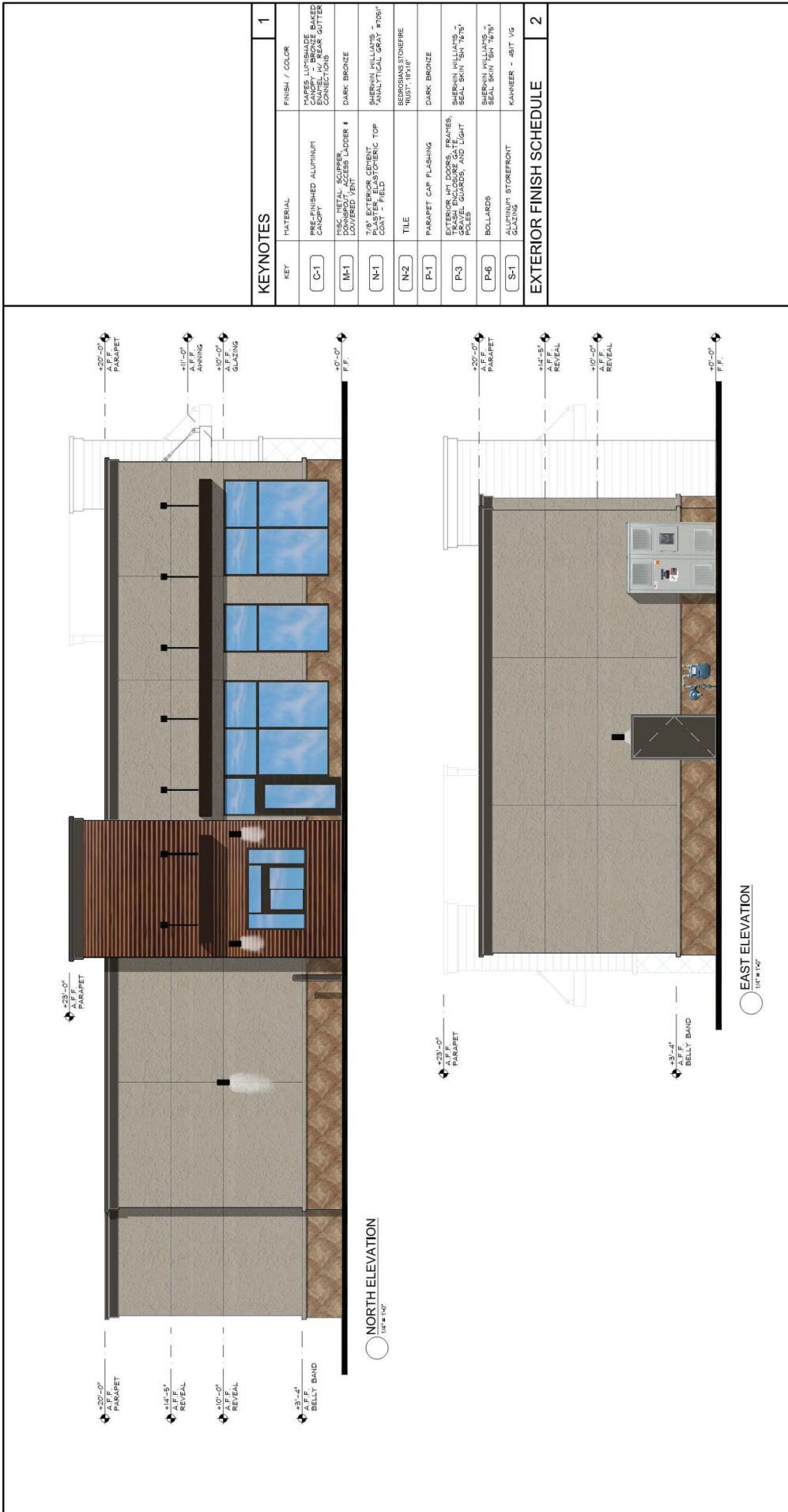
This document, its files and all other documents created in connection with this project are the property of V&M and shall not be used, in whole or in part, for any other project without written permission of V&M.

© COPYRIGHT 2020  
 V&M Architecture and Planning  
 8525 North Cedar Avenue  
 Suite 106  
 Fresno, California 93720  
 Office: 559.432.6744  
 Email: cv@vmltmsno.com



**SITE DEVELOPMENT**  
 MINI-MART / DRIVE-THRU / RETAIL  
 M.E.C. OF HIGHWAY 59 & OLIVE AVE., MERCED, CA  
 EXTERIOR ELEVATIONS (DRIVE-THRU)

ISSUE DATE: 10-9-20  
 REV. DATE:  
 PROJECT NO.: 20003.6  
 DRAWN BY: NL  
 SHEET: A305



KEYNOTES		
KEY	MATERIAL	FINISH / COLOR
C-1	FINISHED ALUMINUM CLAD	MAPES LUTISHADE PAINT, DARK BROWN, BAKED ENAMEL, 100% SOLID
N-1	1/2" METAL SCUPPER, LOWERED VENT	DARK BRONZE
N-1	7/8" EXTERIOR CEMENT CAST POLYESTHERIC TOP COAT FIELD	SHERWIN WILLIAMS "ANATLICAL GRAY #7061"
N-2	TILE	BERKOWS STONEFIRE, 12" x 18"
P-1	PARAPET CAP FLASHING	DARK BRONZE
P-3	EXTERIOR LIGHT DOORS, FRAMES, TRUSS ENCLOSURE GATE, POLES	SHERWIN WILLIAMS "SEAL SKIN #647679"
P-6	BOLLARDS	SHERWIN WILLIAMS "SEAL SKIN #647679"
S-1	ALUMINUM STONEFRONT GLAZING	KAWNEER - 451T VG

EXTERIOR FINISH SCHEDULE	
1	2

EXTERIOR ELEVATIONS (DRIVE-THRU)				
7	8	12	16	20
3	4	8	12	16
4	8	12	16	20

DATE	REVISION

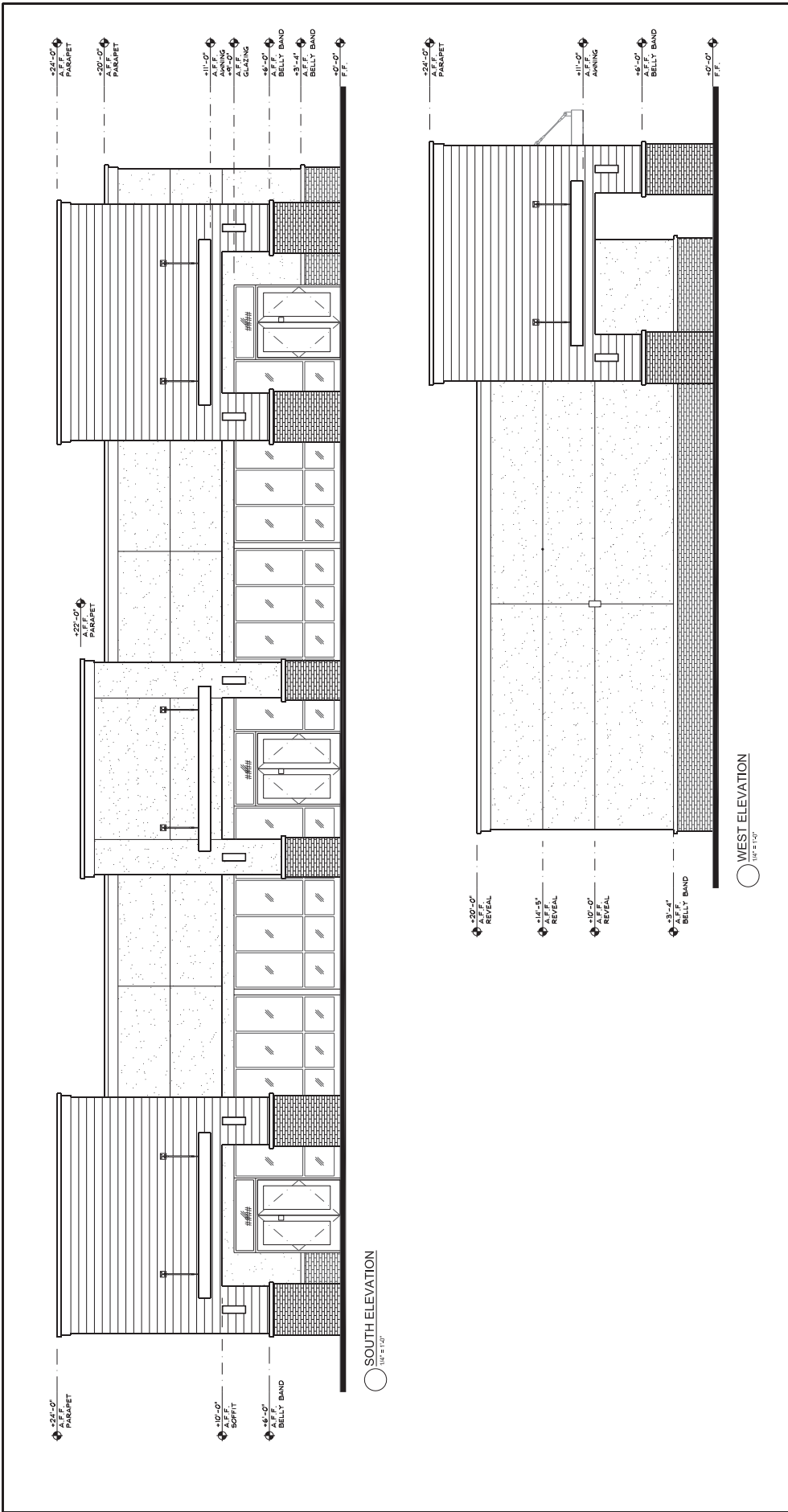
© COPYRIGHT 2020  
Vermeltoort Architects, Inc.  
8525 North Cedar Avenue  
Suite 106  
Fresno, California 93720  
Office: 559.432.6744  
Email: rvy@vermeltoort.com

EXTERIOR ELEVATIONS (OFFICE/RETAIL)  
MINI-MART / DRIVE-THRU / RETAIL  
N.E.C. OF HIGHWAY 59 & OLIVE AVE., MERCED, CA  
N.E.C. 0-9-20  
PROJECT NO: 20003 &  
DRAWN BY: NL  
SHEET: A302



UNLESS SHOWN OTHERWISE  
(STAMP INVALID)  
VERMELTOORT ARCHITECTS, INC.  
8525 NORTH CEDAR AVENUE  
SUITE 106  
FRESNO, CALIFORNIA 93720  
OFFICE: 559.432.6744  
EMAIL: RY@VERMELTOORT.COM

VERMELTOORT ARCHITECTS, INC.  
8525 NORTH CEDAR AVENUE  
SUITE 106  
FRESNO, CALIFORNIA 93720  
OFFICE: 559.432.6744  
EMAIL: RY@VERMELTOORT.COM



EXTERIOR ELEVATIONS (OFFICE/RETAIL)				SCALE: 1/4"=1'-0"		3
KEY	MATERIAL	FINISH / COLOR	KEYNOTES	12	16	20
C-1	PRE-FINISHED ALUMINUM CANOPY	MARBLE LUMBER-GRAY BAKED ENAMEL IN REAR GUTTER CONNECTIONS				
M-1	1/2" ALUMINUM SQUARE DOWNPOUT ACCESS LADDER & DOWNPOUT ACCESS LADDER TOP	DARK BRONZE				
N-1	7/8" EXTERIOR CEMENT COAT - FIELD	SHERWIN WILLIAMS - "MULTI-COLOR GRAY" #1081				
N-2	THIN BRICK VENEER	H.C. "HUGBOY" - "RAILROAD BLEND"				
P-1	PARAPET CAP FLASHING	DARK BRONZE				
P-3	EXTERIOR HTS. DOORS, REARIES, GRAVEL GUARDS, AND LIGHT POLES	SHERWIN WILLIAMS - "BEAL SKIN" #M 1875				
P-5	BOLLARDS	SHERWIN WILLIAMS - "BEAL SKIN" #M 1875				
S-1	ALUMINUM STOREFRONT GLAZING	KANNEER - 45T VG				

DATE	REVISION

This document, its ideas and the information it contains are the property of Vermeltoort Architects, Inc. and shall not be used, in whole or in part, for any other project without the written consent of Vermeltoort Architects, Inc.

© COPYRIGHT 2020

Vermeltoort Architects, Inc.  
Office: 559.432.6744  
Fresno, California 93720  
8525 North Cedar Avenue  
Suite 106



**SITE DEVELOPMENT**  
MINI-MART / DRIVE-THRU / RETAIL  
N.E.C. OF HIGHWAY 59 & OLIVE AVE., MERCED, CA  
EXTERIOR ELEVATIONS (DRIVE-THRU)

ISSUE DATE: 10-9-20  
REV. DATE:  
PROJECT NO.: 20025.6  
DRAWN BY:  
SHEET:

**A304**

<b>KEYNOTES</b>		<b>1</b>	
KEY	MATERIAL	FINISH / COLOR	
C-1	PRE-FINISHED ALUMINUM CASSETTE	HARVEY LITHOMADE CASSETTE, BRONZE BAKED COAT, 1/4" SQUARE GRID	
M-1	MISC. METAL SCUPPER, LOWERED VENT	DARK BRONZE	
N-1	7/8" EXTERIOR CERMENT POLY-1 FIELD	SHERWIN WILLIAMS "ANALYTICAL GRAY" 705H	
N-2	TILE	BERGAMO STONEIRE POST-1918	
P-1	PARAPET CAP FLASHING	DARK BRONZE	
P-3	EXTERIOR JET DOORS, FRAMES, TRASH ENCLOSURE GATE, POLY-1 GUARDS, AND LIGHT	SHERWIN WILLIAMS "SEAL SKIN" 7019	
P-6	BOLLARDS	SHERWIN WILLIAMS "SEAL SKIN" 7019	
S-1	ALUMINUM STOREFRONT GLAZING	KAMMER - 481T VG	
<b>EXTERIOR FINISH SCHEDULE</b>		<b>2</b>	
		<b>3</b>	
		<b>7</b>	
		<b>8</b>	
<b>EXTERIOR ELEVATIONS (DRIVE-THRU)</b>		<b>12</b>	
		<b>16</b>	
		<b>20</b>	

DATE	REVISION

© COPYRIGHT 2020  
 Vernelfoort Architects, Inc.  
 Architecture and Planning  
 8525 North Cedar Avenue  
 Suite 106  
 Fresno, California 93720  
 Office: 559.432.6744  
 Email: rev@vernelfoort.com

DESIGN: 10-19-20  
 REV: 10-19-20  
 PROJECT NO: 20003 &  
 DRAWN BY: NL  
 SHEET: A303

SEAL: 10-19-20  
 REGISTERED ARCHITECT  
 STATE OF CALIFORNIA  
 C-26980

UNLESS SHOWN OTHERWISE, ALL MATERIALS AND FINISHES ARE TO BE SUPPLIED BY THE ARCHITECT'S SELECTED VENDOR AND SHALL BE SUBJECT TO THE ARCHITECT'S APPROVAL.

MINI-MART / DRIVE-THRU / RETAIL  
 N.E.C. OF HIGHWAY 59 & OLIVE AVE., MERCED, CA  
 EXTERIOR ELEVATIONS (OFFICE/RETAIL)

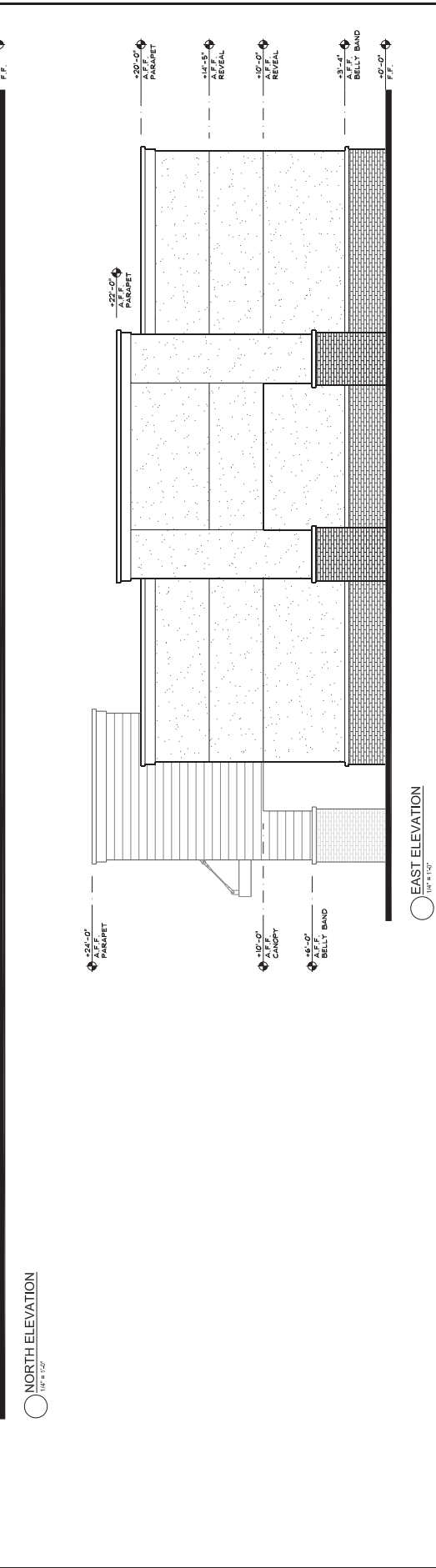
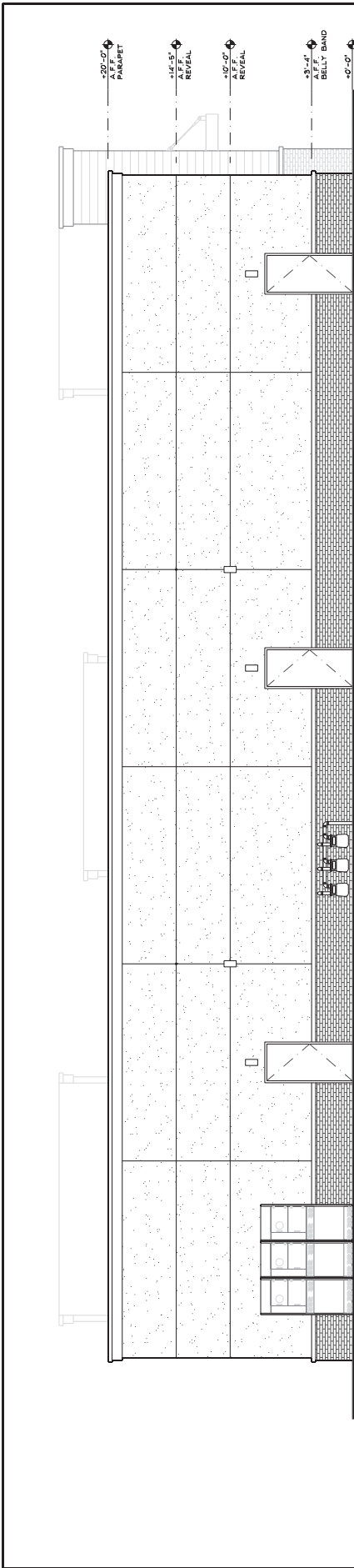
SCALE: 1/4" = 1'-0"

3

EXTERIOR ELEVATIONS (OFFICE/RETAIL)

KEY	MATERIAL	FINISH / COLOR
C-1	PRE-FINISHED ALUMINUM CANOPY	HARVEY LUMBERDAKE BAKED ENAMEL IN REAR GUTTER CONNECTIONS
M-1	1/2" ALUMINUM SQUARE DOWNPOUT ACCESS LADDER & DOWNPOUT ACCESS LADDER TOP	DARK BRONZE
N-1	7/8" EXTERIOR CEMENT COAT - FIELD	SHERWIN WILLIAMS - ANATOLICAL GRAY #1081
N-2	THIN BRICK VENEER	H.C. HUDGOK - "RAILROAD BLEND"
P-1	PARAPET CAP FLASHING	DARK BRONZE
P-3	EXTERIOR HTS. DOORS, FRAMES, SILL CASING, SILL GUARDS, GRAVEL GUARDS, AND LIGHT POLES	SHERWIN WILLIAMS - SEAL SKIN 50N 7675
P-5	BOLLARDS	SHERWIN WILLIAMS - SEAL SKIN 50N 7675
S-1	ALUMINUM STOREFRONT GLAZING	KANNEER - 45T VG

KEYNOTES



KEY	MATERIAL	FINISH / COLOR
C-1	PRE-FINISHED ALUMINUM CANOPY	HARVEY LUMBERDAKE BAKED ENAMEL IN REAR GUTTER CONNECTIONS
M-1	1/2" ALUMINUM SQUARE DOWNPOUT ACCESS LADDER & DOWNPOUT ACCESS LADDER TOP	DARK BRONZE
N-1	7/8" EXTERIOR CEMENT COAT - FIELD	SHERWIN WILLIAMS - ANATOLICAL GRAY #1081
N-2	THIN BRICK VENEER	H.C. HUDGOK - "RAILROAD BLEND"
P-1	PARAPET CAP FLASHING	DARK BRONZE
P-3	EXTERIOR HTS. DOORS, FRAMES, SILL CASING, SILL GUARDS, GRAVEL GUARDS, AND LIGHT POLES	SHERWIN WILLIAMS - SEAL SKIN 50N 7675
P-5	BOLLARDS	SHERWIN WILLIAMS - SEAL SKIN 50N 7675
S-1	ALUMINUM STOREFRONT GLAZING	KANNEER - 45T VG

KEYNOTES

KEYNOTES

KEYNOTES

A

A303



EXTERIOR E

	20	16	12	EXTERIOR FINISH SCHEDULE	8	KEYNOTES	4
--	----	----	----	--------------------------	---	----------	---

DATE	REVISION

© COPYRIGHT 2020  
Vernelboort Architects, Inc.  
All rights reserved. No part of this document may be reproduced or transmitted in any form or by any means electronic or mechanical, including photocopying and recording, or by any information storage or retrieval system, without written permission from Vernelboort Architects, Inc.

Vernelboort Architects, Inc.  
Architecture and Planning  
8525 North Cedar Avenue  
Suite 106  
Fresno, California 93720  
Office: 559.432.6744  
Email: rcv@vrailleno.com

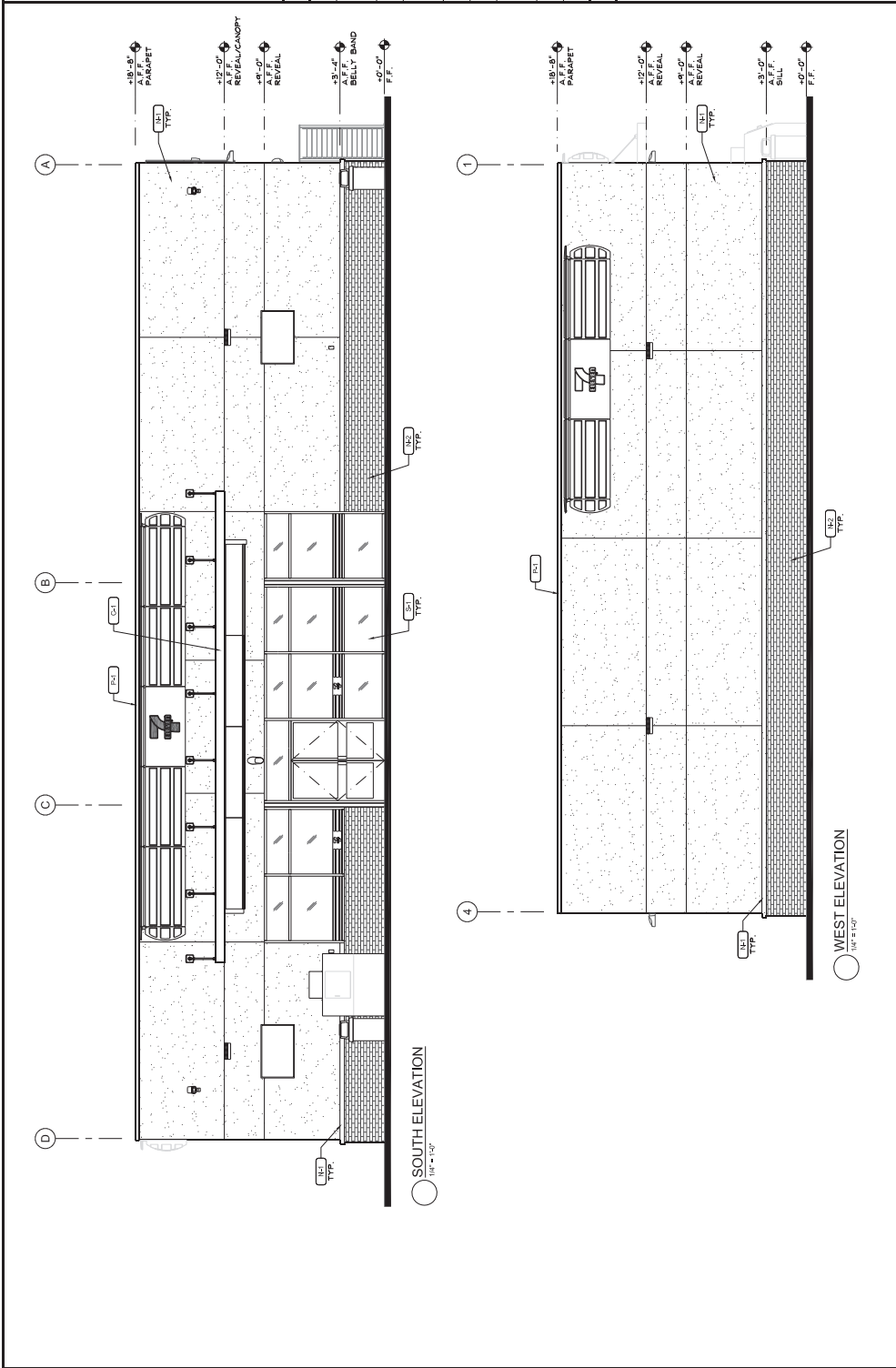


MINI-MART / DRIVE-THRU / RETAIL  
N.E.C. OF HIGHWAY 59 & OLIVE AVE., MERCED, CA  
EXTERIOR ELEVATIONS (7-ELEVEN)

INSIDE DATE: 10-9-20  
REV. DATE:    
PROJECT NO.: 20003 &  
DRAWN BY: NL  
SHEET: A300

KEYNOTES		
KEY	MATERIAL	FINISH / COLOR
C-1	PRE-FINISHED ALUMINUM CANOPY	PAVES LUPINACE BAKED ENAMEL, NO BEAR GUTTER CONNECTIONS
M-1	MISC. METAL: SCUPPER, DOWNSPUT, VENT, ETC.	DARK BRONZE
N-1	PAVEMENT: CEMENT PLASTER, ELASTOMERIC TOP COAT - FIELD	SHERWIN WILLIAMS - ANTI-CRACK GRAY "4091"
N-2	THIN BRICK VENEER	"H.C. MUDDOX - "RAILROAD BLEND"
P-1	PARAPET CAP FLASHING	DARK BRONZE
P-3	EXTERIOR DOOR FRAMES, GLAZING, GUARDS, AND LIGHT FIXTURES	SHERWIN WILLIAMS - SEAL SKIN "5M 75W"
P-6	BOLLARDS	SHERWIN WILLIAMS - SEAL SKIN "5M 75W"
S-1	ALUMINUM STOREFRONT GLazing	KAMMER - .601 VG

EXTERIOR FINISH SCHEDULE		
1	2	3



EXTERIOR ELEVATIONS (7-ELEVEN)		
7	8	12
16	20	24





